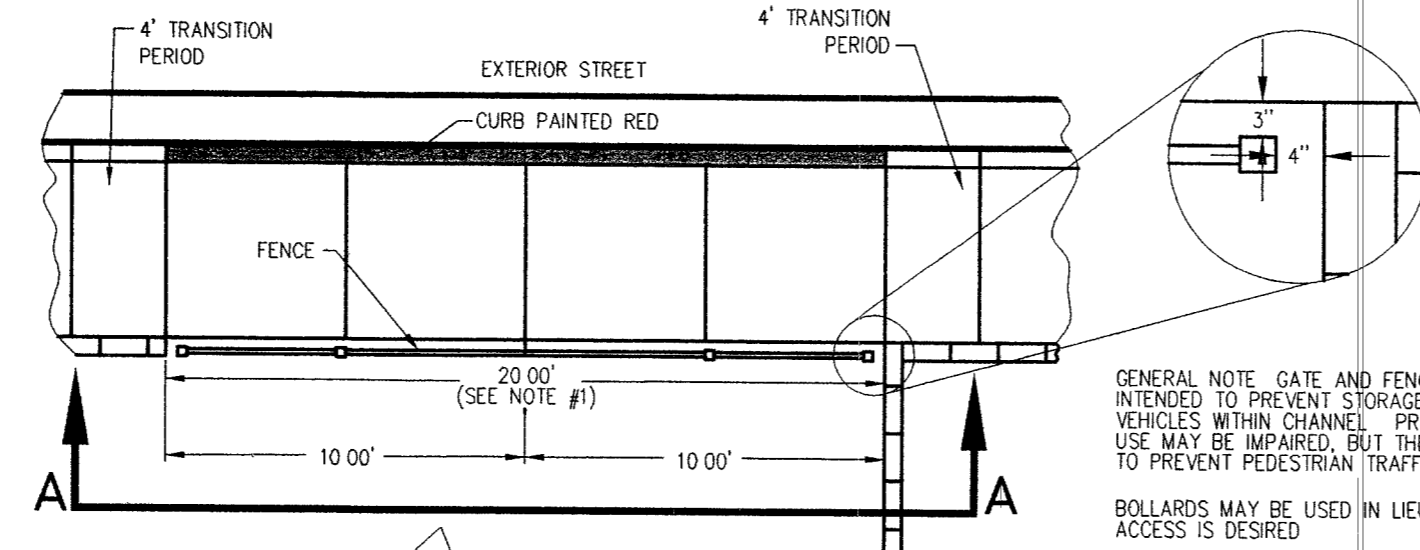
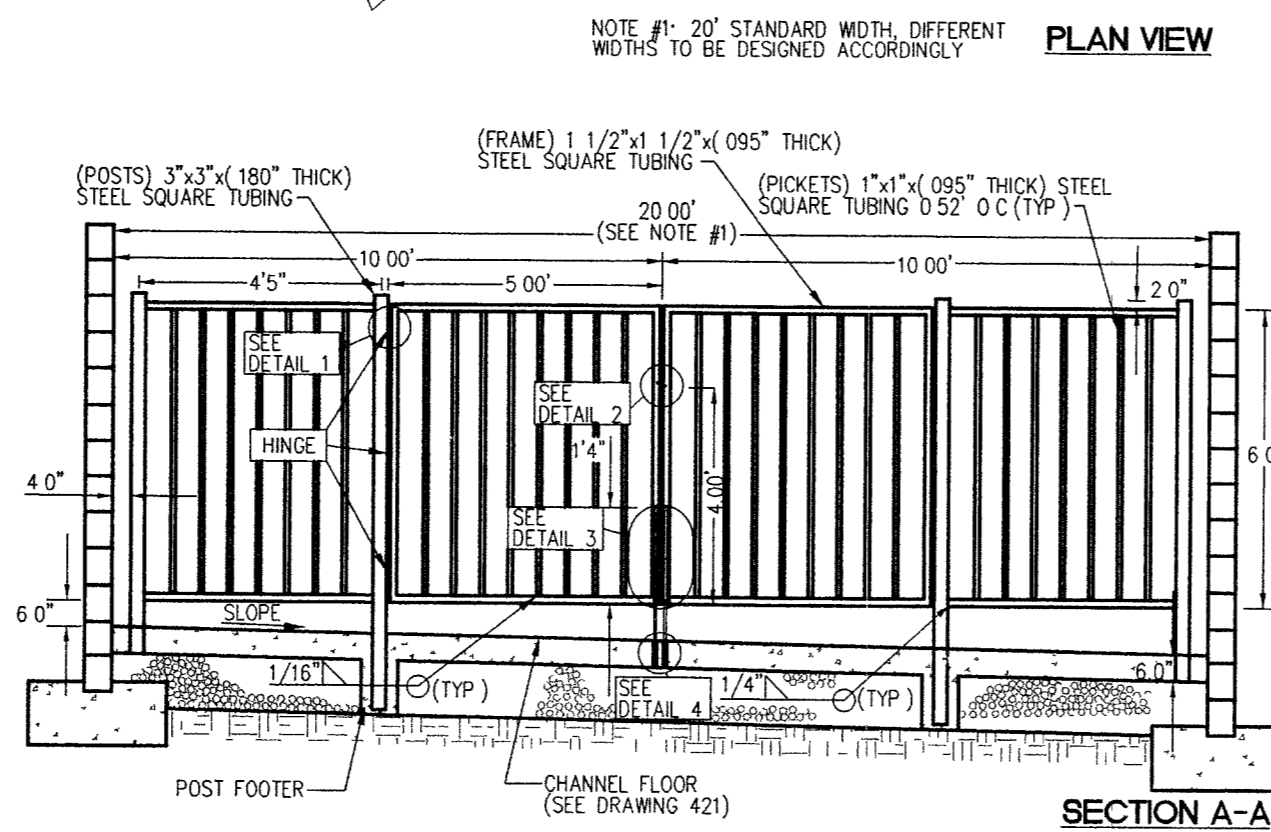


PAD= 2810 8  
FF= 2811 8  
GFF= 2811 3

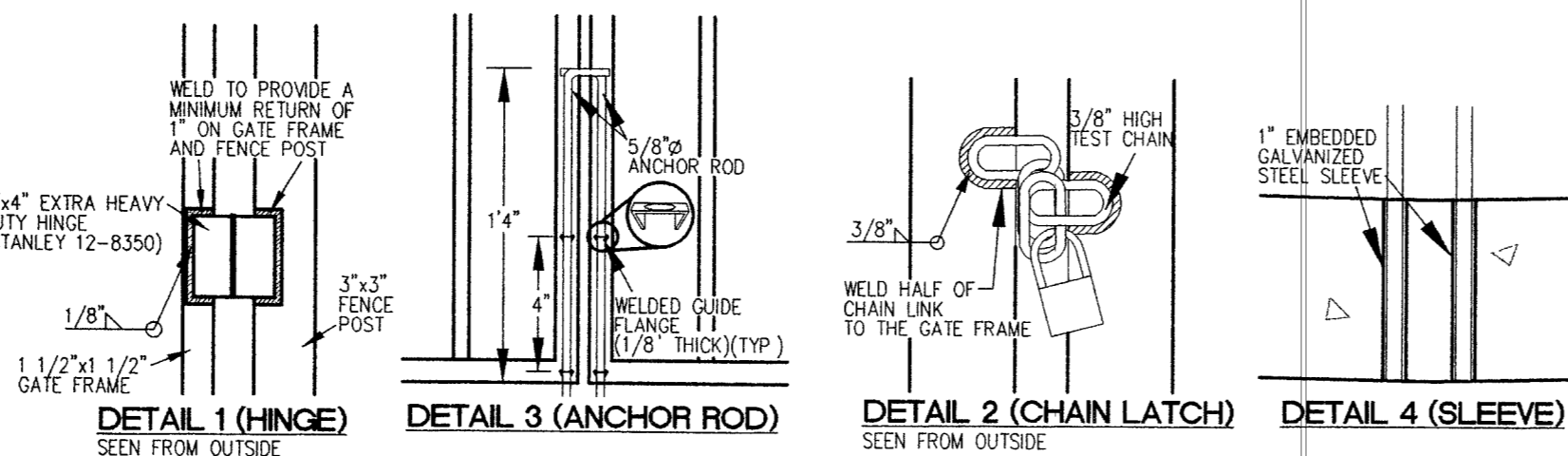
PAD= 2810 8  
FF= 2811 8  
GFF= 2811 3



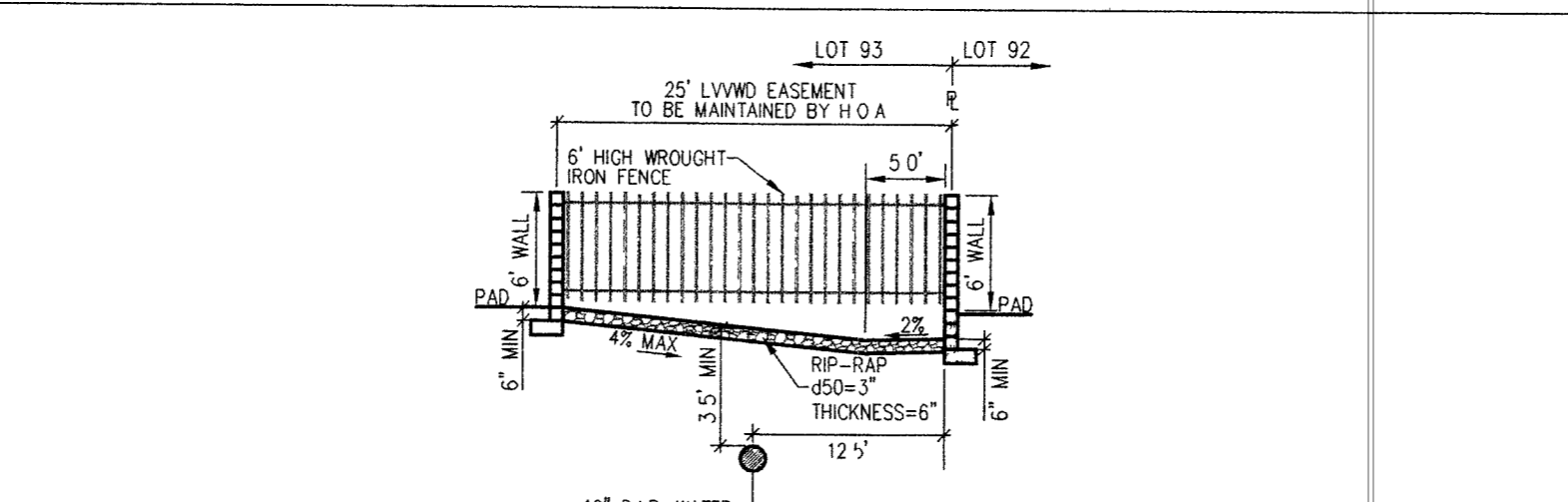
GENERAL NOTE: GATE AND FENCE CONSTRUCTION IS INTENDED TO PREVENT STORAGE OF MATERIALS AND VEHICLES WITHIN CHANNEL. PREVENTION OF PEDESTRIAN USE MAY BE IMPAIRED, BUT THE DESIGN IS NOT INTENDED TO PREVENT PEDESTRIAN TRAFFIC.  
BOLLARDS MAY BE USED IN LIEU OF GATE IF PEDESTRIAN ACCESS IS DESIRED.



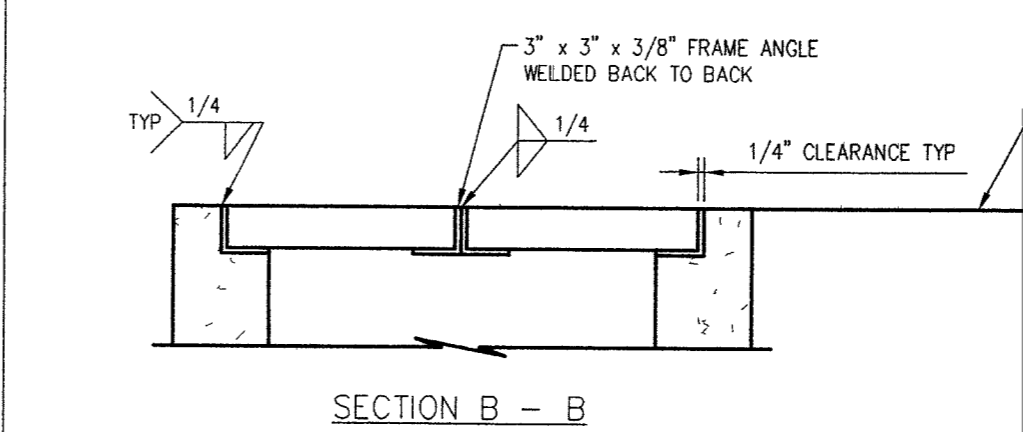
NOTE: POSTS PLACED IN HARDENED CONCRETE REQUIRE AN 8° CORING THROUGH THE SLAB AND BASE FULLY GROUTED WITH HIGH-STRENGTH GROUT.  
INTERIOR POSTS POURED MONOLITHIC WITH THE SLAB SHALL BE EMBEDDED A MINIMUM OF 18" INTO A 6"x6" FOOTER. END POSTS POURED MONOLITHIC WITH THE SLAB SHALL HAVE FULL EMBEDMENT IN THE SLAB.  
NOTE: STEEL WILL BE PRIMED AND PAINTED WHITE UNLESS OTHERWISE SPECIFIED.



A. THRU-LOT DRAIN (WROUGHT IRON FENCE DETAIL)  
NOT TO SCALE



H 25' LWWD EASEMENT  
NOT TO SCALE

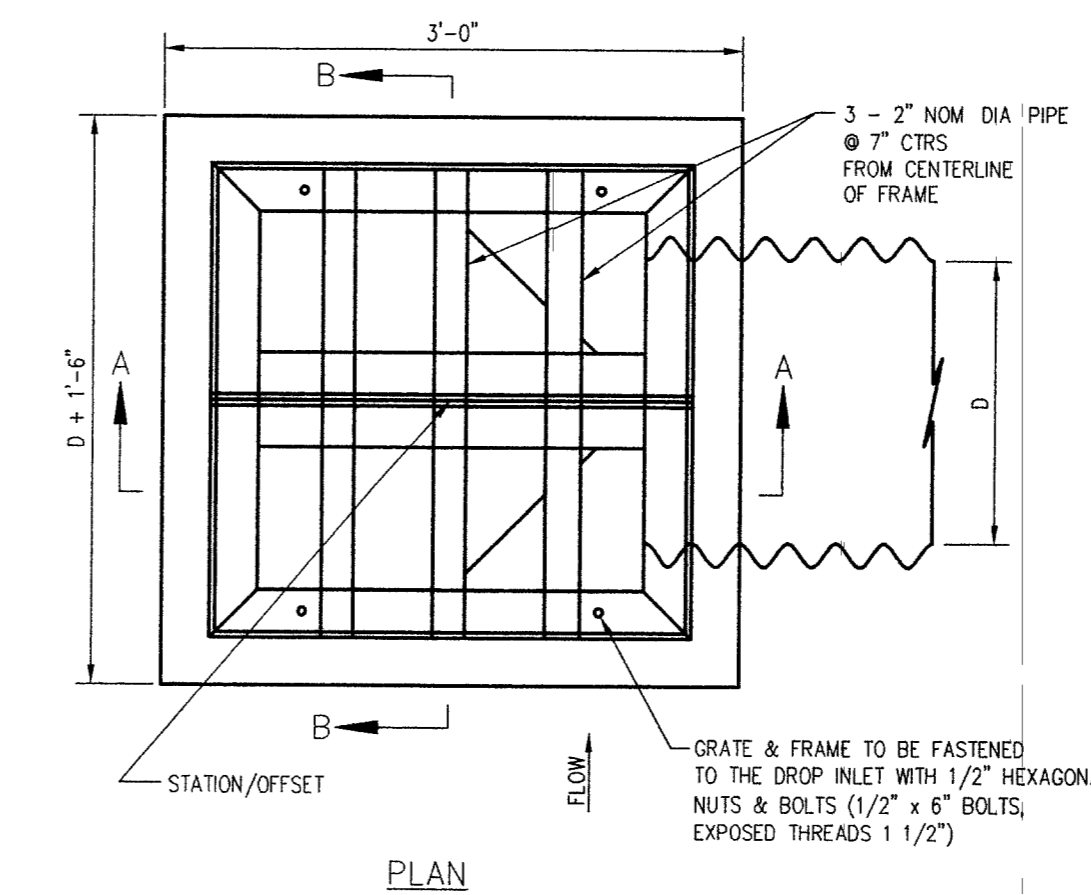
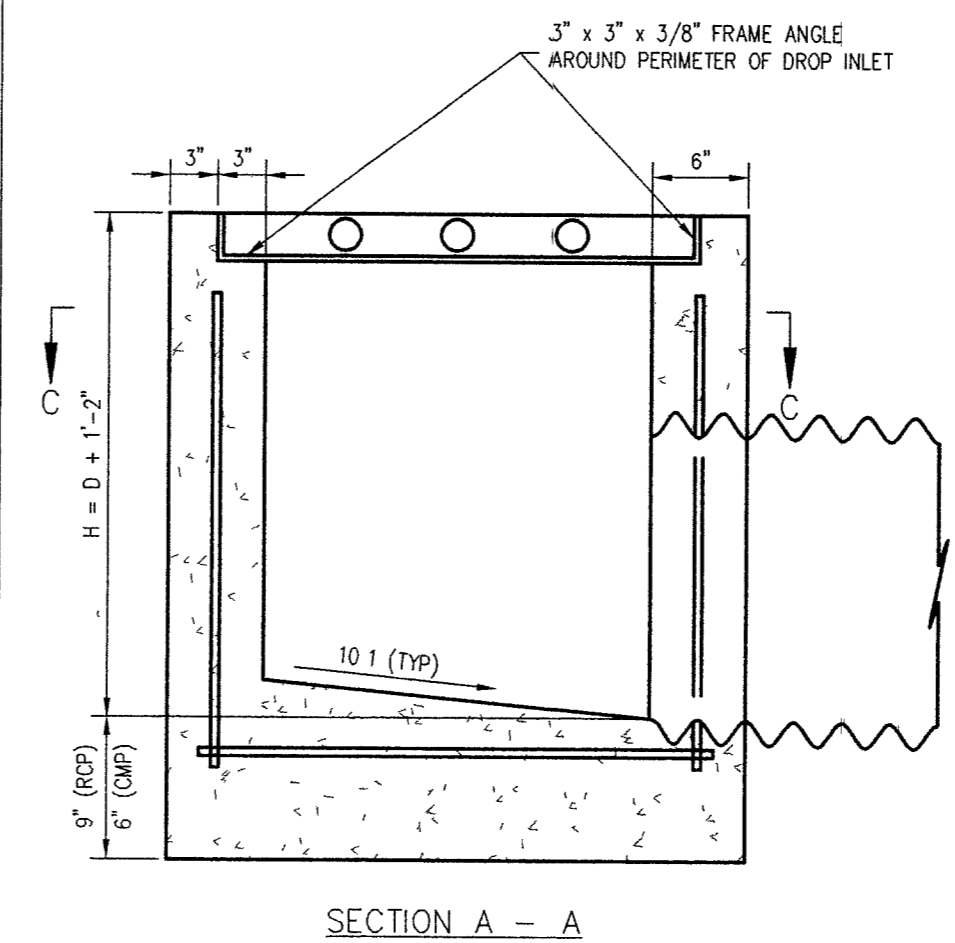


GENERAL NOTES

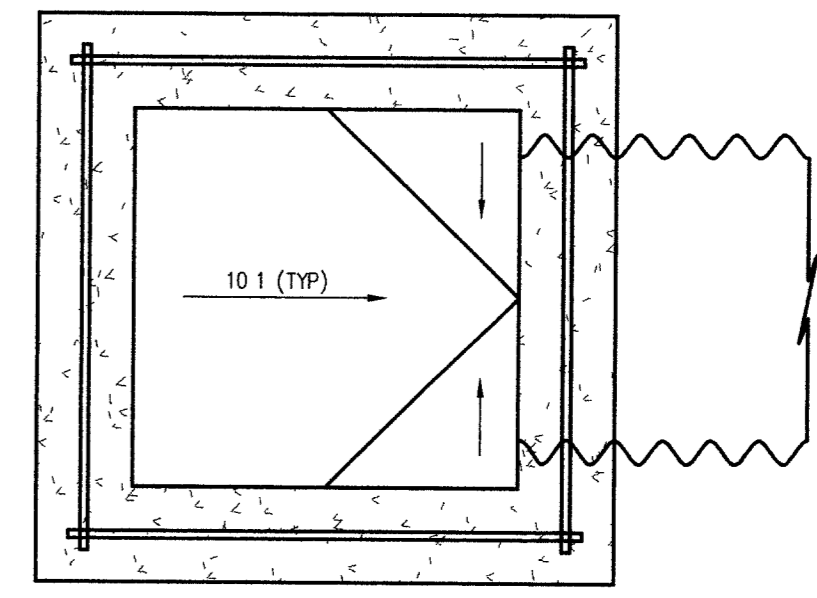
- ALL CONCRETE SHALL BE CLASS A OR AA
- REINFORCING STEEL SHALL BE NO. 4 BARS WITH MAXIMUM SPACING AT 18" CENTERS, WREID TIGHTLY AT ALL INTERSECTIONS AND EMBEDDED 2" CLEAR OF ALL CONCRETE SURFACES
- EXPOSED EDGES OF CONCRETE SHALL BE CHAMFERED 1"
- STRUCTURAL STEEL WEIGHT INCLUDES THE 2" PIPE, STANDARD WEIGHT, AND THE 3" x 3" x 3/8" FRAME ANGLES
- FOR 2" PIPE SEE ASTM A53
- STATION / OFFSET DISTANCE LISTED IN PLANS IS MEASURED TO THE CENTER OF GRATE

R/C SIZE	CONCRETE CU YD	REINFORCING LB	STRUCTURAL STEEL LB
18"	0.68	40	120
24"	0.84	45	132
30"	0.99	60	145
36"	1.17	65	158
42"	1.35	70	170

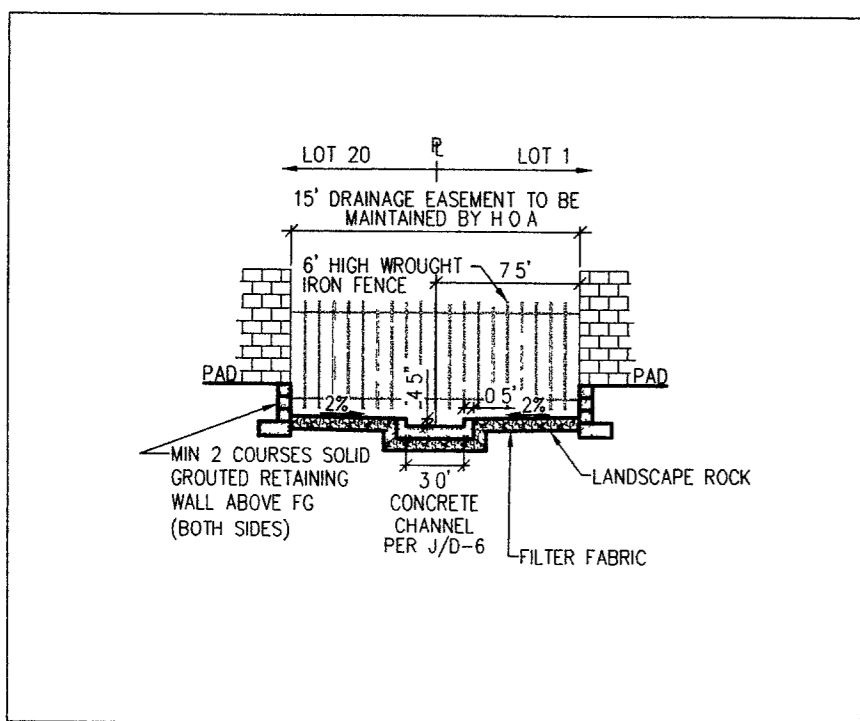
C/M P SIZE	CONCRETE CU YD	REINFORCING LB	STRUCTURAL STEEL LB
18"	0.62	39	120
24"	0.77	44	132
30"	0.93	59	145
36"	1.11	64	158
42"	1.29	69	170



E. TYPE 2A DROP INLET  
NOT TO SCALE

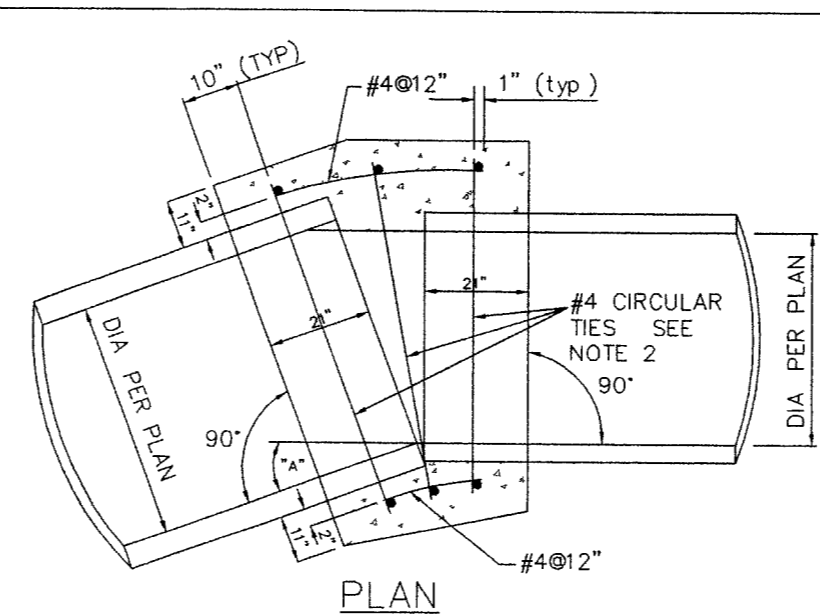
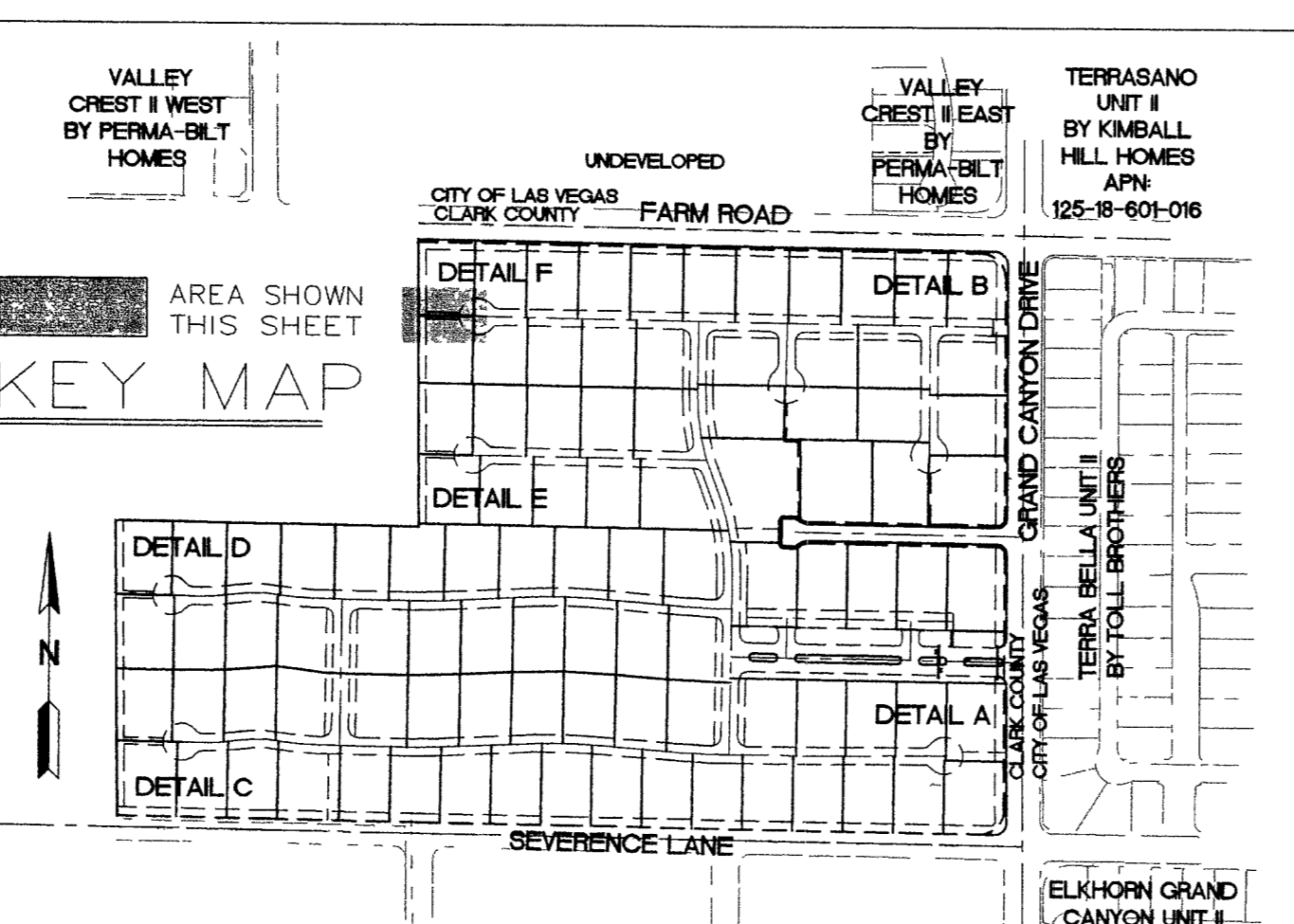


SECTION C - C  
NOT TO SCALE

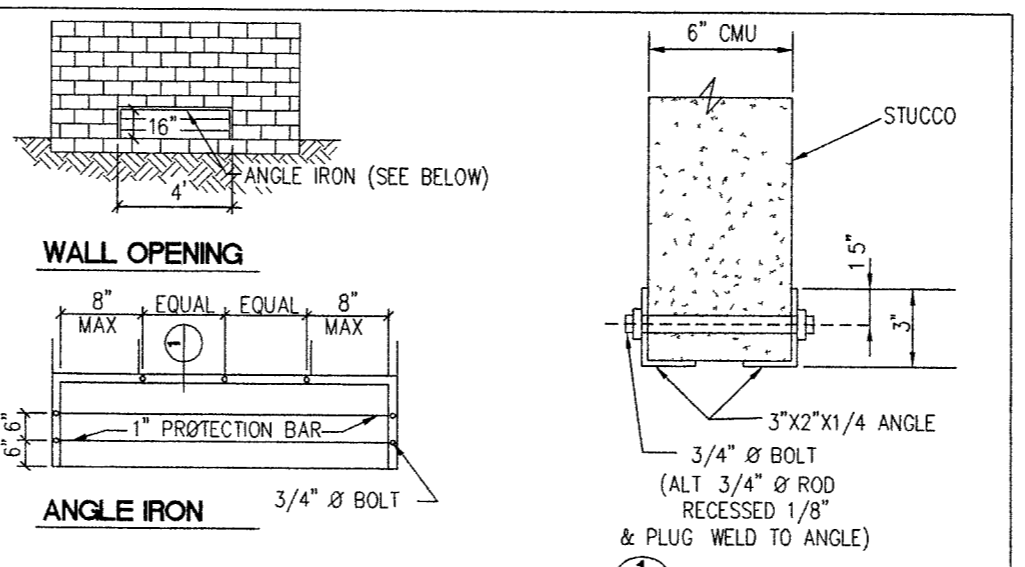


SECTION  
SCALE - N.T.S.

F. TYPICAL 15' DRAINAGE EASEMENT DETAIL



G. CONCRETE COLLAR DETAIL  
NOT TO SCALE



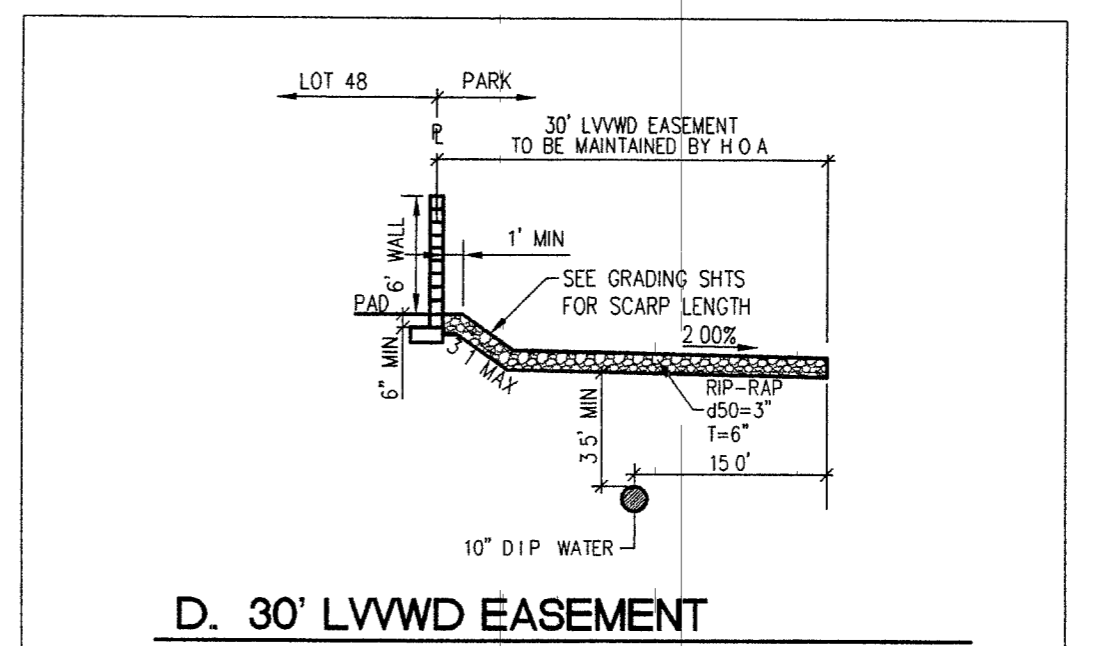
C. BLOCK WALL OPENING  
NOT TO SCALE

CIRCULAR TIES:

PIPE DIAMETER	SPACE BETWEEN PIPE EXTREMITIES	NO. OF CIRCULAR TIES
21" or less	2 1/2"	3
24" to 30"	2 1/2" or less	3
33" to 57"	2 1/2" or less	4
60" to 66"	2 1/2" or less	5

NOTES:

- WHERE THE SLOPE OF THE UPSTREAM PIPE IS GREATER THAN THE SLOPE OF THE DOWNSTREAM PIPE, JOIN SOFFITS WHERE THE SLOPE OF THE UPSTREAM PIPE IS LESS THAN THE SLOPE OF THE DOWNSTREAM PIPE, JOIN INVERTS
- WHERE THE SPACE BETWEEN THE PIPE EXTREMITIES EXCEEDS 2 1/2 INCHES, THE NUMBER OF CIRCULAR TIES SHALL BE INCREASED TO MAINTAIN A MAXIMUM SPACING OF 6 INCHES CENTER TO CENTER. CIRCULAR TIES SHALL HAVE A DIAMETER 5 INCHES GREATER THAN THE OUTSIDE DIAMETER OF THE LARGER PIPE



D. 30' LWWD EASEMENT  
NOT TO SCALE

APPROVED FOR CONSTRUCTION  
*He Spem* 7-11-05  
LAS VEGAS VALLEY WATER DISTRICT  
PROJECT # 1108887

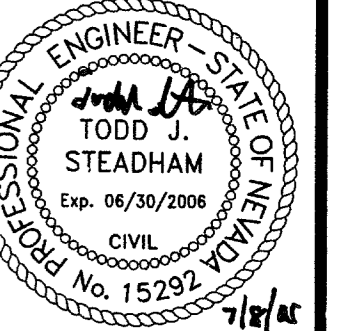
NO.	DESCRIPTION	DATE	BY	APP.

CLARK COUNTY, NEVADA

PINNACLE HOMES  
SABLE CREEK  
DRAINAGE CHANNEL SECTIONS AND DETAILS

SECTION 18  
TOWNSHIP 2 SOUTH  
RANGE 60 EAST, M.D.M.

DATE 07/07/05  
DRAFTER: DMB  
DESIGNER: DMB  
CHECKED: TJS  
PROJECT NO. PIN0402-001



D-4  
SHEET 40 OF 44  
CLV DWG # 307/930  
CC HTB# 05-7395