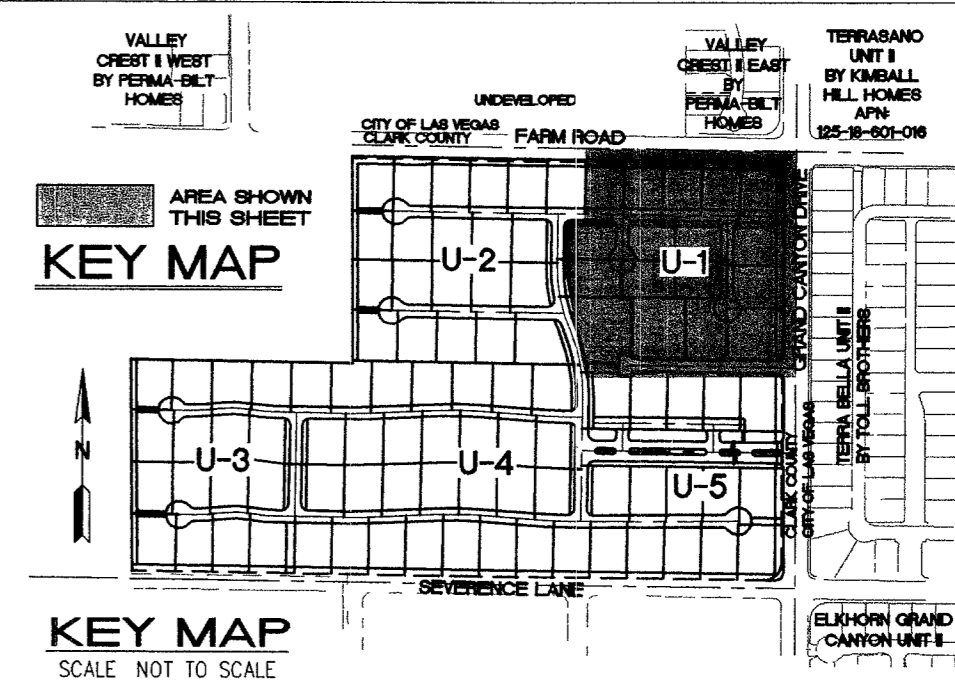
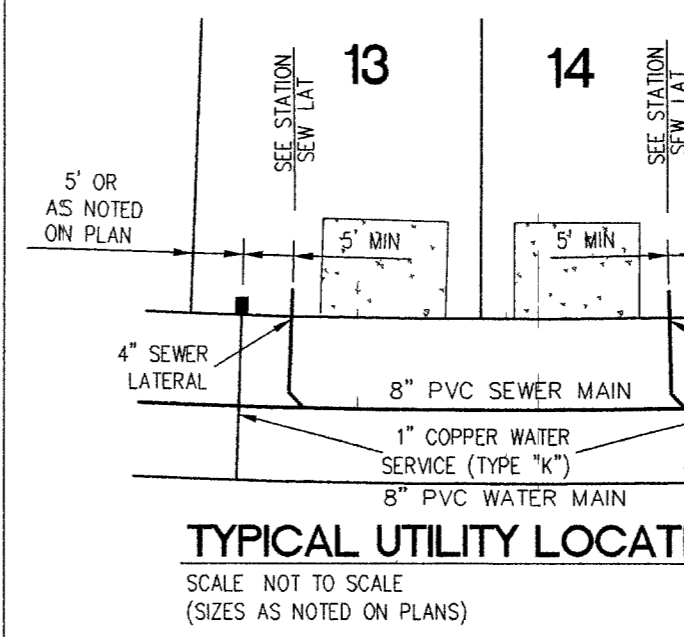


- ### WATERLINE NOTES
- 6" PVC WATER LINE
 - 6" 11 25' BEND
 - 6" GATE VALVE
 - 8" PVC WATER LINE
 - 8" D.I.P. WATER LINE
 - 8" 11 25' BEND
 - 8" 22 5' BEND
 - 8" 90° BEND
 - 8" TEE
 - 8" GATE VALVE
 - 8" x 6" REDUCER
 - 10" PVC WATER LINE
 - 10" 11 25' BEND
 - 10" 90° BEND
 - 10" GATE VALVE
 - 10" x 6" REDUCER
 - FIRE HYDRANT ASSEMBLY W/6" GATE VALVE PER UDACS STD. P.L.T. NO. 7
 - 2" BLOW OFF ASSEMBLY PER UDACS STD. P.L.T. NO. 4A
 - 1" IRRIGATION SERVICE W/1" METER AND 1" RPPA PER UDACS STD. P.L.T. NO. 1-D AND 11-A
 - REMOVE CAP AND BLOW OFF PER UDACS PLATE NO. 4A, NOTE NO. 1, AND CONNECT TO EXISTING MAIN (FIELD VERIFY INVERT)
 - 10" D.I.P. WATER LINE
 - 10" 10" x 8" TEE
 - 10" 10" x 6" TEE
 - 10" 10" x 6" TEE
 - 10" CROSS
 - 10" x 10" M/J TAPPING SLEEVE W/10" TAPPING VALVE PER UDACS 22
 - 10" 45" D.I.P. VERTICAL JOINT PER UDACS P.L.T. NO. 15



- ### LEGEND
- LOT LINE
 - STREET CENTERLINE
 - POINT OF CONNECTION
 - WATER LINE
 - CHANGE IN WATER LINE DIRECTION (MAX 1" DEFLECTION AT JOINT ONLY)
 - SEWER LINE W/FLOW DIRECTION ARROW
 - EXISTING WATER LINE
 - EXISTING SEWER LINE
 - BACK WATER VALVE
 - 1" SERVICE LATERAL AND 1" WATER METER PER UDACS STD. P.L.T. NO. 1-B
 - SEWER LATERAL
 - LOT NUMBER
 - SANITARY SEWER MANHOLE
 - BLUE REFLECTIVE MARKER PER [97 UFC SEC 901.4.3]
 - VALVE (NEW)
 - FIRE HYDRANT (NEW)
 - VALVE (EXISTING)
 - FIRE HYDRANT (EXISTING)
 - 32 DENOTES "L" CURB AND GUTTER



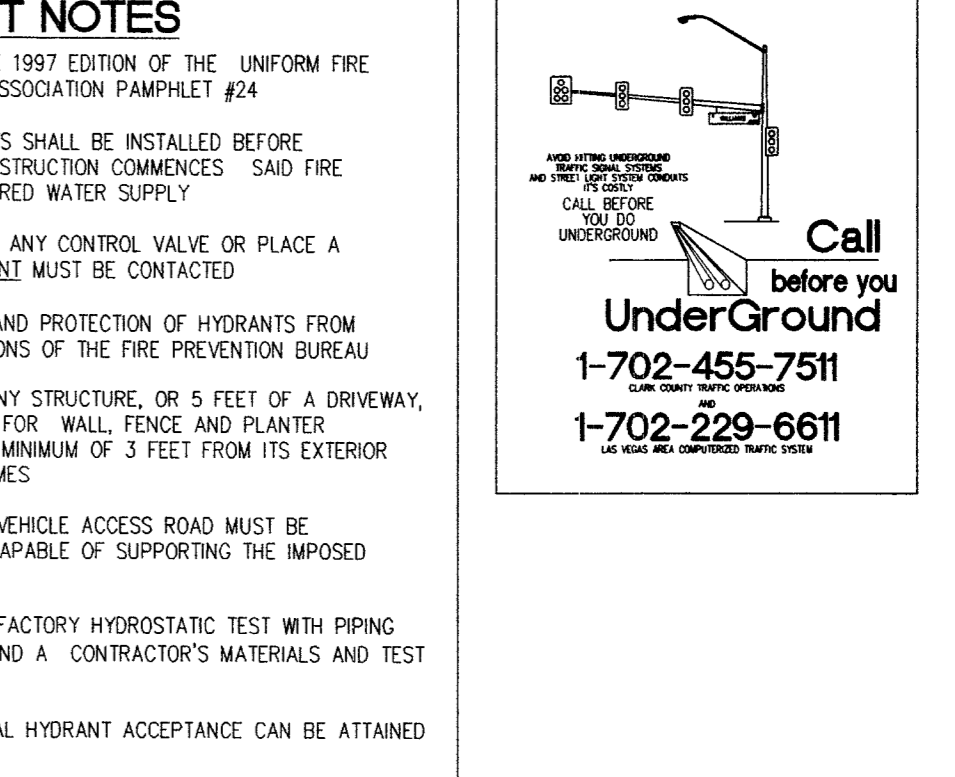
ESTIMATE OF WATER QUANTITIES

10" PVC WATER PIPE	3938 LF
10" D.I.P. WATER PIPE	409 LF
8" PVC WATER PIPE	488 LF
8" D.I.P. WATER PIPE	1401 LF
8" 11 25' BEND	3
8" 22 5' BEND	4
8" 90° BEND	3
8" GATE VALVE	11
6" PVC WATER PIPE	1107 LF
6" 11 25' BEND	2
10" 11 25' BEND	7
8" x 8" TEE	5
8" x 6" REDUCER	5
10" x 8" TEE	4
10" x 10" TEE	4
10" GATE VALVE	12
10" x 6" REDUCER	2
10" x 8" REDUCER	1
10" CROSS	4
FIRE HYDRANT ASSEMBLY PER UDACS STD. P.L.T. NO. 7	23
1" SERVICE LATERAL AND 3/4" WATER METER PER UDACS STD. P.L.T. NO. 1D	97
2" BLOW OFF ASSEMBLY PER UDACS STD. P.L.T. NO. 4A	9
1" IRRIGATION METER W/1" RPPA PER UDACS STD. P.L.T. NO. 1-D AND 11-A	4
10" x 10" M/J TAPPING SLEEVE W/10" TAPPING VALVE PER UDACS 22	1
10" 45" D.I.P. VERTICAL JOINT PER UDACS 15	16



Call before you Dig.
1-800-227-2600
UNDERGROUND SERVICE (USA)

- ### FIRE DEPARTMENT NOTES
- ALL WORK SHALL BE DONE IN STRICT ACCORDANCE WITH THE 1997 EDITION OF THE UNIFORM FIRE CODE, AND THE 1995 EDITION OF NATIONAL FIRE PROTECTION ASSOCIATION PAMPHLET #24
 - ON ANY BUILDING CONSTRUCTION, ACCESSIBLE FIRE HYDRANTS SHALL BE INSTALLED BEFORE COMBUSTIBLE MATERIALS ARE DELIVERED TO THE SITE AND CONSTRUCTION COMMENCES. SAID FIRE HYDRANTS SHALL BE IN GOOD WORKING ORDER WITH THE REQUIRED WATER SUPPLY.
 - IF DURING CONSTRUCTION IT BECOMES NECESSARY TO CLOSE ANY CONTROL VALVE OR PLACE A HYDRANT OUT OF SERVICE, THE CLARK COUNTY FIRE DEPARTMENT MUST BE CONTACTED.
 - PAINTING OF CURBS AND/OR STRIPING OF ASPHALT AREAS AND PROTECTION OF HYDRANTS FROM PHYSICAL INJURY PER FIRE HYDRANT INSTALLATION SPECIFICATIONS OF THE FIRE PREVENTION BUREAU.
 - NO FIRE HYDRANT SHALL BE LOCATED WITHIN 25 FEET OF ANY STRUCTURE, OR 5 FEET OF A DRIVEWAY, POWER POLE, LIGHT STANDARD, OR ANY OTHER OBSTRUCTION FOR WALL, FENCE AND PLANTER LOCATIONS. A PERIMETER AROUND THE HYDRANT MEASURING A MINIMUM OF 3 FEET FROM ITS EXTERIOR SHALL BE MAINTAINED CLEAR OF ALL OBSTRUCTION AT ALL TIMES.
 - AT ALL TIMES DURING CONSTRUCTION SUITABLE EMERGENCY VEHICLE ACCESS ROAD MUST BE MAINTAINED. ROADWAYS MUST BE SMOOTH, COMPACTED AND CAPABLE OF SUPPORTING THE IMPOSED LOADS OF ALL EMERGENCY VEHICLES.
 - PRIOR TO ACCEPTANCE OF ANY FIRE SERVICE MAIN, A SATISFACTORY HYDROSTATIC TEST WITH PIPING JOINTS UNCOVERED MUST BE CONDUCTED. APPROVED PLANS AND A CONTRACTOR'S MATERIALS AND TEST CERTIFICATE MUST BE PROVIDED AT TIME OF INSPECTION.
 - BLUE REFLECTIVE MARKERS MUST BE INSTALLED BEFORE FINAL HYDRANT ACCEPTANCE CAN BE ATTAINED [97 UFC SEC 901.4.3]



FIRE DEPARTMENT DATA

FIRE FLOW REQUIREMENT	2250 GALLONS PER MINUTE AT 20 PSI RESIDUAL PRESSURE
BASED ON	SQUARE FOOTAGE LESS THAN 7200 SQUARE FEET
OCCUPANCY	SINGLE FAMILY RESIDENCE
BUILDING DETAIL	W= R3-U1-N

- ### EASEMENT NOTES
- 37' DRAINAGE EASEMENT, LVWD WATER EASEMENT, PUBLIC UTILITY EASEMENT (TO BE MAINTAINED BY H.O.A.) AND CLV PUBLIC SEWER EASEMENT
 - 20' DRAINAGE EASEMENT (TO BE MAINTAINED BY H.O.A.) AND CLV PUBLIC SEWER EASEMENT
 - DRAINAGE EASEMENT TO BE PRIVATELY MAINTAINED BY H.O.A. (SEE DIMENSION ON PLAN FOR EASEMENT WIDTH)

- ### NOTES
- H.O.A. RESPONSIBLE FOR ALL WATER SERVICE LATERALS PAST METER
 - INSTALL PIPELINE MARKER BALLS IN TRENCH ABOVE EACH HORIZONTAL ELBOW FITTING, PER UDACS PLATE NO. 27
- NOTE: THIS PROJECT PLAN APPROVAL CONTINGENT ON PROJECT # H1082733, CAPRIANA PLAN APPROVAL

REDUCED PRESSURE PRINCIPLE ASSEMBLY (1) 1"

APPROVED REDUCED PRESSURE PRINCIPLE ASSEMBLY(S) SHALL BE INSTALLED PER THE UDACS PLATE NO. 11A. NO WATER SHALL BE TAKEN FROM A SERVICE REQUIRING BACKFLOW PREVENTION UNTIL THE REDUCED PRESSURE PRINCIPLE ASSEMBLY HAS BEEN SUCCESSFULLY TESTED BY THE LVWD.

ANY BLOCK WALL OR OTHER FENCE MATERIAL SHALL BE DESIGNED AND CONSTRUCTED AROUND THE OUTSIDE OF THE EASEMENT(S) TO ALLOW THE DISTRICT DIRECT ACCESS FROM THE ADJACENT RIGHT-OF-WAY.

EASEMENTS SHALL BE CLEARLY MARKED OR STAKED PRIOR TO THE START OF CONSTRUCTION.

PRIVATE WELLS TO BE REMOVED FROM SERVICE

THE EXISTING PRIVATE WELL IS TO BE ABANDONED. THE DISTRICT WATER SERVICE WILL REMAIN IN THE OFF POSITION UNTIL THE WELL HAS BEEN ABANDONED (WHICH MUST BE ACCOMPLISHED WITHIN 30 DAYS OF THE INSTALLATION OF THE DISTRICT SERVICE) OR PHYSICALLY DISCONNECTED FROM THE ON-SITE SYSTEM. AN INSPECTION OF THE ON-SITE SYSTEM WILL BE MADE BY THE DISTRICT'S INSPECTION DIVISION TO VERIFY THE WELL HAS BEEN DISCONNECTED FROM THE ON-SITE SYSTEM, AND THAT THE WELL IS NO LONGER FUNCTIONAL. THE STATE OF NEVADA DIVISION OF WATER RESOURCES (TELEPHONE NUMBER 702-486-2770) MAY BE CONTACTED FOR INFORMATION CONCERNING REQUIREMENTS AND PROCEDURES FOR ABANDONING WELLS.

THIS PROPERTY MAY HAVE STATIC WATER PRESSURE IN EXCESS OF 80 P.S.I.

THE UNIFORM PLUMBING CODE REQUIRES THAT INDIVIDUAL ON-SITE (PRIVATE), PRESSURE REDUCING VALVES BE INSTALLED WHENEVER THE PRESSURE EXCEEDS 80 P.S.I. PRIVATE WELLS ARE THE DEVELOPER'S RESPONSIBILITY, AND WILL NOT BE INSPECTED OR INCLUDED IN THE ACCEPTANCE OF LVWD FACILITIES.

WATER MAIN JOINT DEFLECTION (P.V.C. 4"-24")
P.V.C. PIPE SHALL BE DEFLECTED AT THE JOINT ONLY. THE MAXIMUM ALLOWABLE DEFLECTION SHALL BE ONE (1) DEGREE PER JOINT WITH A MINIMUM RADIUS OF CURVATURE OF 1,150 FEET, PER UDACS 2.06.01 AND 2.06.02

FOR CHANGES IN DIRECTION EXCEEDING THE MAXIMUM ALLOWABLE JOINT DEFLECTION, FITTINGS SHALL BE USED.

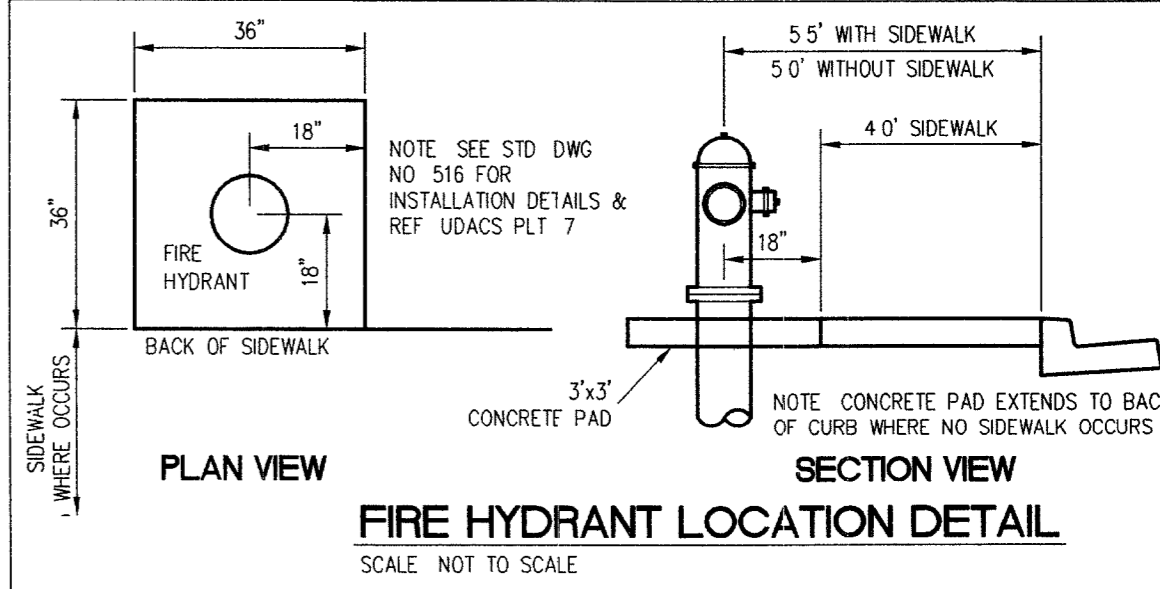
2975 WATER PRESSURE ZONE

APPROVED FOR CONSTRUCTION

DATE: 7-11-05

COUNTY OF CLARK
FIRE DEPARTMENT
APPROVED

7/105



SLATER HANIFAN GROUP
CONSULTING ENGINEERS & PLANNERS
5740 S. ARVILLE STREET #216, LAS VEGAS, NV 89118
PHONE (702) 284-5300 FAX (702) 284-5399

CLARK COUNTY, NEVADA

PINNACLE HOMES
SABLE CREEK
UTILITY PLAN 1

SECTION 18
TOWNSHIP 19 SOUTH
RANGE 60 EAST, M.D.M.

DATE: 06/20/05
DRAFTER: DMB
DESIGNER: DMB
CHECKED: TJS
PROJECT NO.
PIN0402-001

PROFESSIONAL ENGINEER STATE OF NEVADA
TODD J. STEADHAM
Exp. 06/30/2006
CIVIL
No. 15292

U-1
SHEET 3 OF 44
CLV DWG #301V930
CC HTE# 05-7995