

NO.	DESCRIPTION	DATE	BY	APP.

CLARK COUNTY, NEVADA

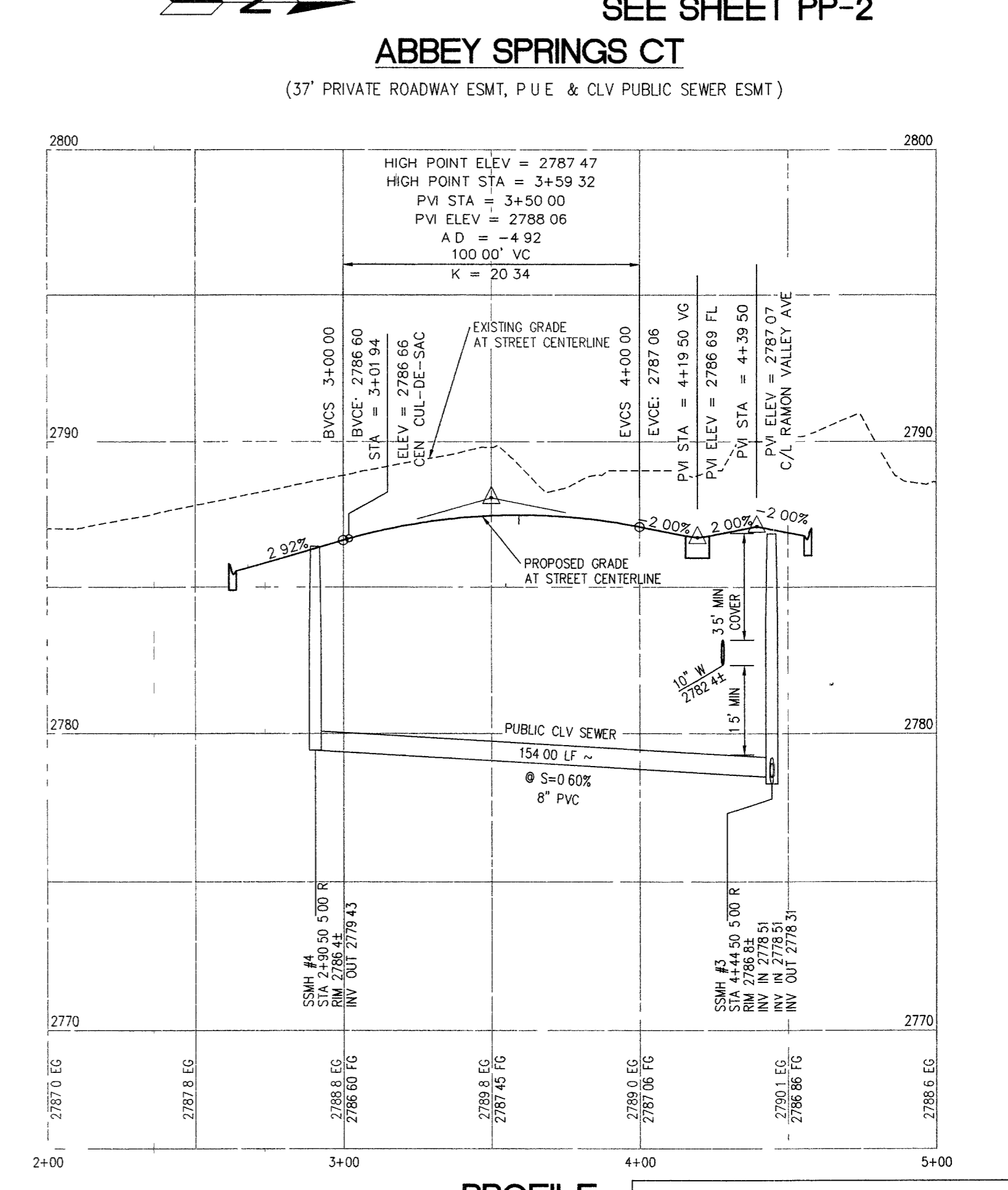
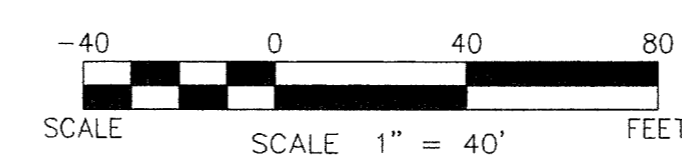
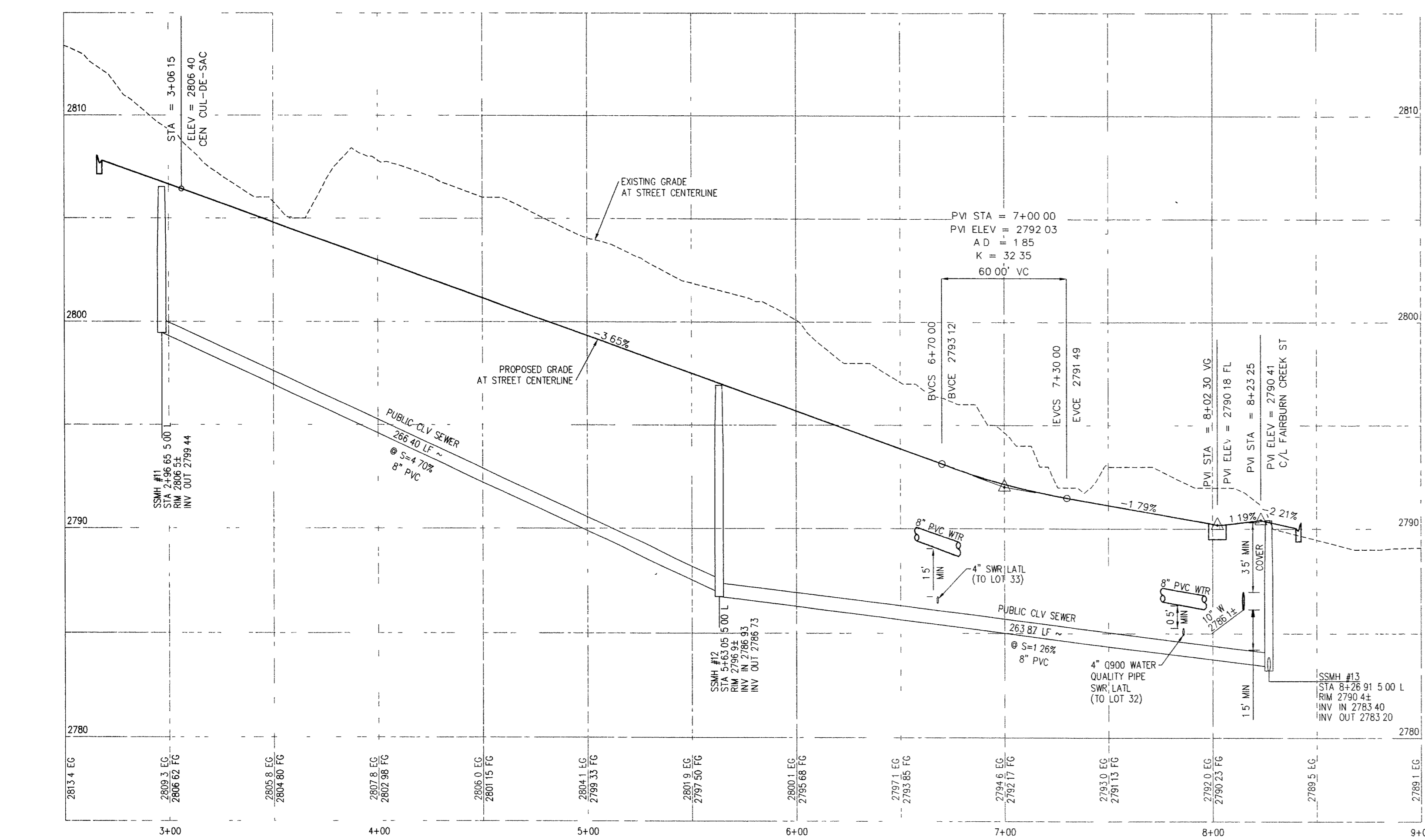
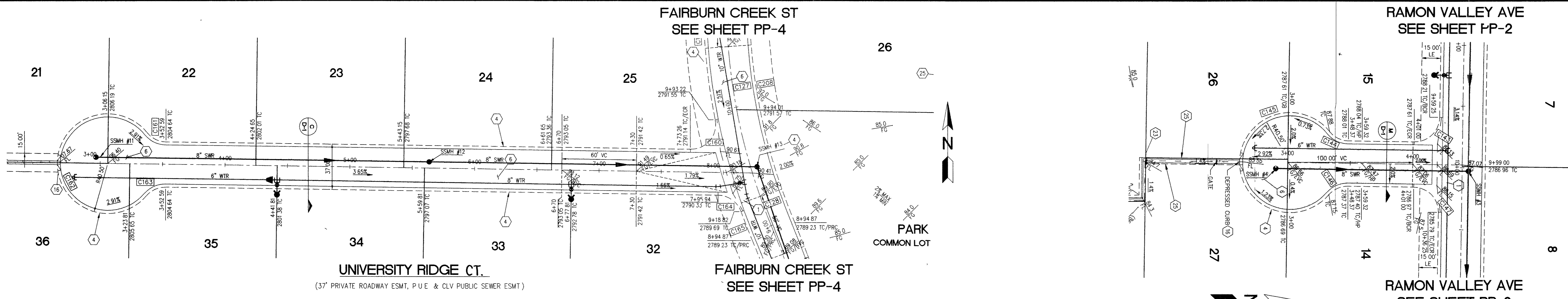
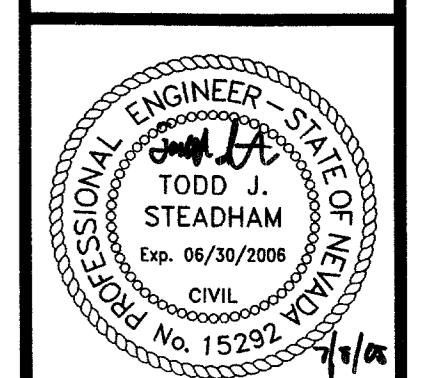
PINNACLE HOMES
SABLE CREEK
UNIVERSITY RIDGE PLAN AND PROFILE
ABBIE SPRINGS CT PLAN AND PROFILE

SECTION 18
TOWNSHIP 19 SOUTH
RANGE 60 EAST, M.D.M.

DATE: 07/07/05
DRAFTER: DMB
DESIGNER: DMB
CHECKED: JTS

PROJECT NO.
PIN0402-001

PP-3
SHEET 16 OF 44
CLV DWG #307V93.0
CC-HTE# 05-7995



- CONSTRUCTION NOTES**
- CONSTRUCT 6" WIDE CROSS GUTTER PER DETAIL CCAUSD #228 (SEE DETAIL ON SHEET D-2)
 - CONSTRUCT 4" WIDE BY 4" THICK SIDEWALK PER CCAUSD #234
 - CONSTRUCT SIDEWALK RAMPS USING ARMOR TILE TRUNCATED DOMES OR EQUIVALENT PER CCAUSD #235, CASE 1
 - CONSTRUCT ROLL CURB PER DETAIL CCAUSD #217A
 - CONSTRUCT "L" TYPE CURB PER CCAUSD #216
 - CONSTRUCT 2" AC ON 4" TYPE II A/B ON 6" TYPE I OR NATIVE SEE SECTION "C", SHEET D-1
 - SAWOUT, REMOVE AND REPLACE EXISTING PAVEMENT PER PROP. STREET SECTION
 - CONSTRUCT 10" TRANSITION FROM ROLL CURB TO "L" CURB SEE DETAIL "X", SHEET D-2
 - CONSTRUCT 5" WIDE BY 4" THICK SIDEWALK PER CCAUSD #234
 - CONTRACTOR TO VERIFY ELEV OF EXIST CURB AND GUTTER, P.V.M.T., STORM DRAIN, RETAINING WALL ELEVATIONS, AND SDWK PRIOR TO CONST. NOTIFY ENGINEER OF ANY CONFLICTS
 - CONST SIDEWALK UNDERDRAIN PER CCAUSD NO 236
 - CONST "A" TYPE MEDIAN CURB PER CCAUSD #219
 - CONST DEPRESSION CURB PER CCAUSD #227
 - "MST BLOCK WALL OPENING PER SECTION "C", SHEET D-4
 - CONST 4" AC ON 4" TYPE II A/B ON 9" TYPE I, SEE SECTION "A", SHEET D-1
 - CONST 4" AC ON 4" TYPE II A/B ON 9" TYPE I, SEE SECTION "C", SHEET D-3
 - CONST 4" AC ON 4" TYPE II A/B ON 9" TYPE I, SEE SECTION "C", SHEET D-1
 - CONST 3" AC ON 9" TYPE II A/B, SEE SECTION "B", SHEET D-1
 - CONST 3" AC ON 9" TYPE II A/B, SEE SECTION "B", SHEET D-3
 - CONSTRUCT CONC CUTOFF WALL PER SECTION "C" SHEET D-3
 - CONCRETE ENCASMENT PER UDACS SEC 2.19
 - CONST BLOCK WALL OPENING PER DETAIL "D" ON SHT D-6

- EASEMENT NOTES**
- 37' DRAINAGE EASEMENT, LVWD WATER EASEMENT, PUBLIC UTILITY EASEMENT (TO BE MAINTAINED BY H.O.A.) AND CLV PUBLIC SEWER EASEMENT
 - 20' DRAINAGE EASEMENT (TO BE MAINTAINED BY H.O.A.) AND CLV PUBLIC SEWER EASEMENT
 - DRAINAGE EASEMENT TO BE PRIVATELY MAINTAINED BY H.O.A. (SEE DIMENSION ON PLAN FOR EASEMENT WIDTH)

BENCHMARK
BENCHMARK FOUND CITY OF LAS VEGAS RIVET AND ROUND PLATE IN CONCRETE CYLINDER, SOUTHEAST CORNER OF ELKHORN RD AND CONQUISTADOR ST
BM NO 66 STATION BLV50 19NNW6 ELEVATION = 2803.77 (NAVD 88)

BASIS OF BEARING
THE BASIS OF BEARINGS FOR THIS SURVEY IS BASED ON THE FOUND AND HELD MONUMENTS MARKING THE SOUTHWEST QUARTER (SW1/4) OF THE SOUTHEAST QUARTER (SE1/4) OF SECTION 13, T19S, R66E, M0M, CLARK COUNTY, NEVADA PER RECORD OF SURVEY BOOK 123, PAGE 32, CLARK COUNTY RECORDER'S OFFICE AS SOUTH 88°46'46" EAST

CLARK COUNTY DEPARTMENT OF DEVELOPMENT SERVICES
ACCEPTANCE OF PLANS FOR FILING

BY: *[Signature]*
ACCEPTANCE OF THESE PLANS FOR FILING SHALL NOT BE CONSTRUED TO BE A PERMIT FOR OR AN APPROVAL OF ANY VIOLATION OF ANY OF THE PROVISIONS OF THE STATE OR COUNTY LAWS AND/OR SPECIFICATIONS CLARK COUNTY SHALL BE HELD FREE FROM DAMAGES WHICH MAY RESULT FROM THE CONSTRUCTION OF THE IMPROVEMENTS FROM THE ENGINEERING DESIGN DEPICTED HEREIN

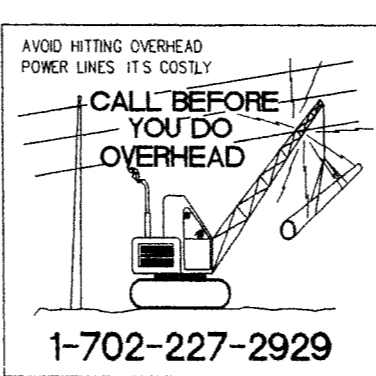
NOTE: POWER POLES AND/OR OTHER EXISTING FACILITIES NOT IN PROPER LOCATION BASED ON PROPOSED IMPROVEMENTS SHOWN HEREON WILL BE RELOCATED AT NO EXPENSE TO CLARK COUNTY

CENTERLINE CURVE TABLE

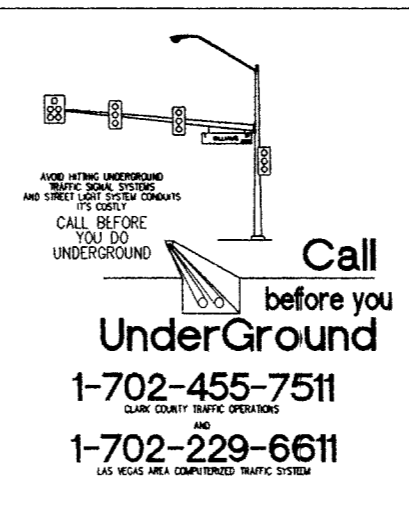
CURVE	LENGTH	RADIUS	DELTA	TANGENT
C127	148.60	481.50	174°05'59"	74.90
C128	50.24	481.50	9°58'41"	25.14

BACK OF CURB CURVE TABLE

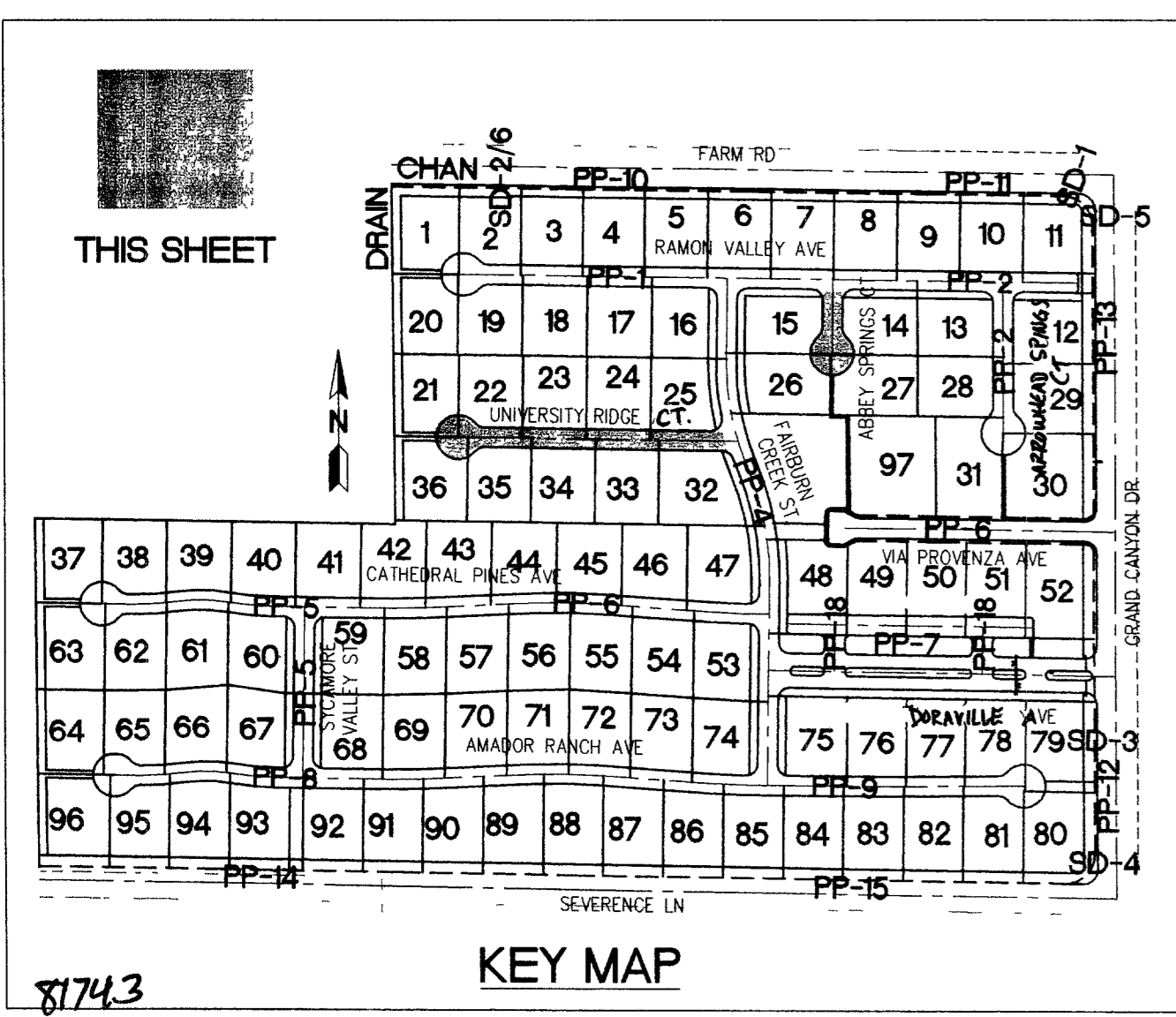
CURVE	LENGTH	RADIUS	DELTA	TANGENT
C143	31.42	20.00	90°00'00"	20.00
C144	17.26	19.50	50°42'13"	9.24
C145	198.91	40.50	281°24'25"	33.14
C146	17.26	19.50	50°42'13"	9.24
C147	31.42	20.00	90°00'00"	20.00
C160	35.60	20.00	101°58'22"	24.69
C161	17.26	19.50	50°42'13"	9.24
C162	198.91	40.50	281°24'25"	33.14
C163	17.26	19.50	50°42'13"	9.24
C164	24.15	20.00	68°10'28"	13.79
C165	24.87	499.96	2°51'01"	12.44
C208	191.20	463.00	23.3940°	96.88



Avoid hitting overhead power lines it's costly
Call before you Dig.
1-800-227-2600
UNDERGROUND SERVICE (USA)



Avoid cutting underground utility lines it's costly
Call before you Dig.
1-702-455-7511
1-702-229-6611
CALL BEFORE UNDERGROUND



PROFILE
HOR 1" = 40'
VERT 1" = 4'

File: J:\V\0402-001\Draw\Imp\0402-PP-3.dwg Job: 07-2005 - 15/14