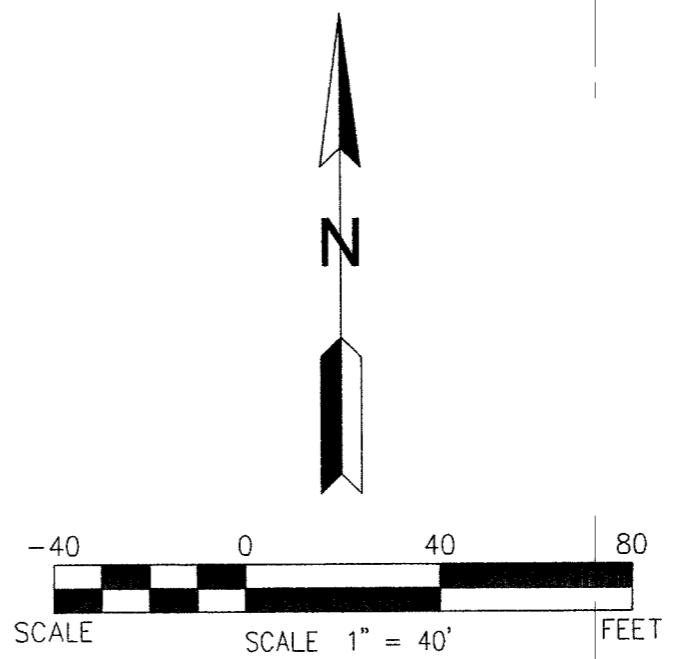
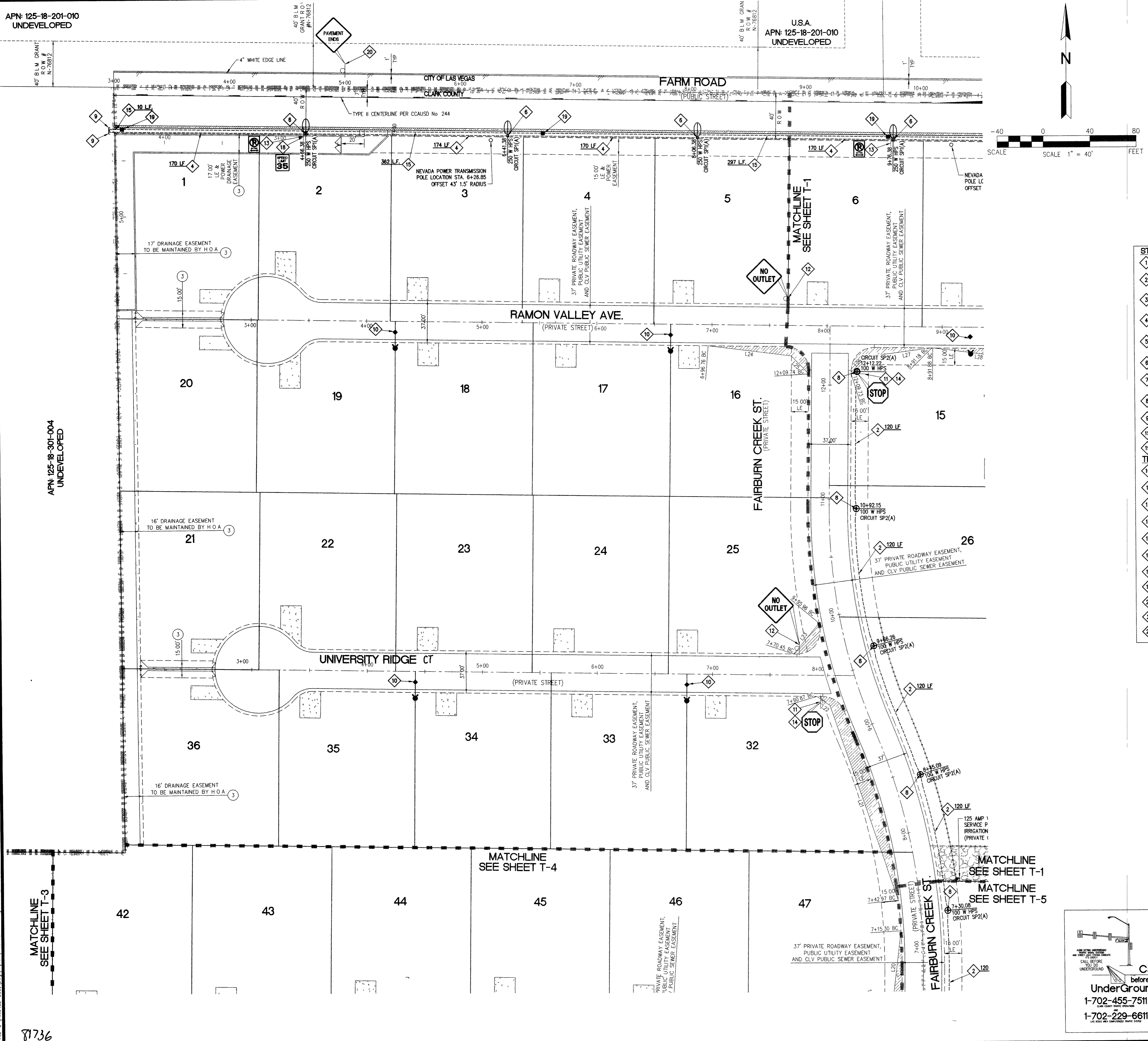


SLATER HANIFAN GROUP
CONSULTING ENGINEERS & PLANNERS
5740 S. ARVILLE STREET #216, LAS VEGAS, NV 89118
PHONE (702) 284-5300 FAX (702) 284-5399



STREETLIGHTING NOTES

- 1 PROPOSED 1-1/4" CONDUIT ONLY
- 2 PROPOSED 1-1/4" CONDUIT CONTAINING 2-#4, 1#8 GND [CIRCUIT SP2(A)] AVOIDING FIRE HYDRANT WERE NEEDED
- 3 CONNECT EXISTING CONDUIT TO PROPOSED WITHOUT CONNECTING CIRCUITS
- 4 PROPOSED 2" CONDUIT CONTAINING 2-#4, 1#8 GND [CIRCUIT SP1(A)] AVOIDING FIRE HYDRANT WERE NEEDED
- 5 PROPOSED 100W HPS SINGLE STREETLIGHT ASSEMBLY AND FOUNDATION PER USD 314, 320 & 321 [CIRCUIT SP1(A)]
- 6 PROPOSED 250W HPS SINGLE STREETLIGHT ASSEMBLY AND FOUNDATION PER USD 314, 320 & 321 [CIRCUIT SP1(A)]
- 7 PROPOSED XX-A-30 POLE PER CC TRAFFIC SIGNAL LAYOUT DETAIL ON SHEET T-6 [CIRCUIT SP1(A)]
- 8 PROPOSED 100W HPS DECORATIVE LIGHTING POLE PER DETAIL (A/T-1) OR EQUIVALENT [CIRCUIT SP2(A)]
- 9 STUB OUT AND CAP 5 FT PAST PROPERTY LINE
- 10 PROPOSED 3" FAST CONDUIT W/ (1) #8 BARE WIRE OR GREEN CONDUCTOR
- 11 INSTALL 6-30 PULLBOX WITH "FIBER OPTIC" INSCRIBED ON THE LID PER CCUSS 623003-01
- 12 INTALL BLUE COLORED REFLECTIVE RAISED PAVEMENT MARKERS PER [97 UFC SEC 901.4.3]
- 13 INSTALL R1-1 30"x 30" STOP SIGN
- 14 INSTALL W14-2 "NO OUTLET" SIGN
- 15 INSTALL R7-1 APR, "NO PARKING ANYTIME" SIGN
- 16 INSTALL 0-3 STREET NAME SIGN PER USD DWS NO 250 & 251 (9", TWO PER POLE)
- 17 INSTALL BARRICADE AND END OF ROAD MARKERS PER CCUSD NO 601
- 18 INSTALL R2-1, 35 MPH SPEED LIMIT SIGN
- 19 INSTALL W8-3, "PAVEMENT ENDS" SIGN
- 20 INSTALL 0-3 STREET NAME SIGN PER USD DWS NO 250 & 251 (12", TWO PER POLE)
- 21 INSTALL TEMPORARY #35 PULL BOX

SVZ LINE TABLE

LINE	LENGTH	BEARING
L20	64.12'	N07°07'39"E
L21	179.34'	N18°51'45"W
L22	13.75'	S54°37'00"E
L23	34.66'	N39°48'35"E
L24	72.54'	S82°44'43"E
L25	21.69'	S44°12'40"E
L26	22.28'	N45°47'20"E
L27	54.79'	N82°39'57"E
L28	72.54'	S82°44'42"E

LEGEND

- LOT LINE
- STREET CENTERLINE
- STREET LIGHT CONDUIT
- MATCHLINE
- 32 LOT NUMBER
- 100W HPS SINGLE STREETLIGHT (SEE T-6 FOR OFFSET INFO)
- 250W HPS SINGLE STREETLIGHT (SEE T-6 FOR OFFSET INFO)
- 400W HPS LUMINAIRE FOUNDATION & TRAFFIC SIGNAL POLE W/ 15' NO RISE LUMINAIRE ARM W/ HARDWARE FOR X STYLE POLE (SEE T-6 FOR OFFSET INFO)
- 100W HPS DECORATIVE LIGHTING POLE PER DETAIL (A/T-6) OR EQUIVALENT
- SP1(X) PROPOSED SERVICE PEDESTAL SEE TRAFFIC SHEETS FOR SERVICE PEDESTAL DESIGNATION REFER TO ELECTRICAL SERVICE NOTES ON SHEET T-6
- TRAFFIC SIGN PER USD 326 UNLESS OTHERWISE NOTED ON TRAFFIC PLANS
- BLUE REFLECTIVE MARKER PER [97 UFC SEC 901.4.3]

ELECTRICAL SERVICE NOTES

- 1 SP1 200 AMP, SINGLE PHASE, 3 WIRE, 120/240V PAD MOUNTED SERVICE PEDESTAL FEEDER FROM N.P.CO. POINT OF CONNECTION TO BE 2", 2#4/0 THW, 1#4/0 WHITE THW (COPPER) TRANSFORMER TO SERVICE PEDESTAL DISTANCES GREATER THAN 250 FEET FOR SPECIFIED CONDUCTORS MUST BE APPROVED BY ENGINEER SERVICE PEDESTAL SHALL BE LOCATED A MINIMUM OF 30 FEET FROM THE TRANSFORMER
- 2 THE FOLLOWING SHALL BE INCLUDED IN THE SERVICE PEDESTAL: (2) 60 AMP, 240V, 2-POLE CIRCUIT BREAKERS, (2) 60 AMP, 240V, 2-POLE LIGHTING CONTACTORS, (2) TEST SWITCHES (ONE FOR EACH CONTACTOR), PHOTOELECTRICAL CONTROL
- 3 (1) 15 AMP, 120V, SINGLE POLE CIRCUIT BREAKER FOR LIGHTING CONTROLS CONTRACTOR TO PROVIDE (2) CONDUITS FROM SERVICE PEDESTAL TO FIRST STREETLIGHTING PULLBOX SERVICE PEDESTAL SHALL COMPLY WITH CLARK COUNTY AREA UNIFORM STANDARD DRAWINGS 330, 331, 332.1 AND 335.1

ELECTRICAL NOTES

- 1 ALL UNDERGROUND CONDUIT SHALL BE TYPE RMC (RIGID NONMETALLIC CONDUIT), SCHEDULE 40 PVC AND SHALL BE INSTALLED PER DETAIL THIS SHEET ABOVE GRADE CONDUIT SHALL BE TYPE RMC (RIGID METALLIC CONDUIT) CONDUIT RISERS SHALL BE TYPE RMC WITH PVC COATING OR TAPE WRAP ALL CONDUIT WHICH WOULD OTHERWISE BE EMPTY SHALL INCLUDE A NYLON PULLSTRING AND 1#8 FOR LOCATING PURPOSES
- 2 ALL CONDUCTOR SHALL BE STRANDED, 600V, TYPE THW INSULATED COPPER
- 3 THE ELECTRICAL CONTRACTOR SHALL FURNISH AND INSTALL ALL ELECTRICAL COMPONENTS AND HARDWARE AS REQUIRED BY THE NATIONAL ELECTRICAL CODE, LATEST EDITION, AND SHALL COMPLY WITH THE REQUIREMENTS OF THE INSPECTING AUTHORITY HAVING JURISDICTION

Avoid cutting underground utility lines. It's costly.

Call before you Dig.

1-800-227-2600
UNDERGROUND SERVICE (USA)

Avoid hitting overhead power lines. It's costly.

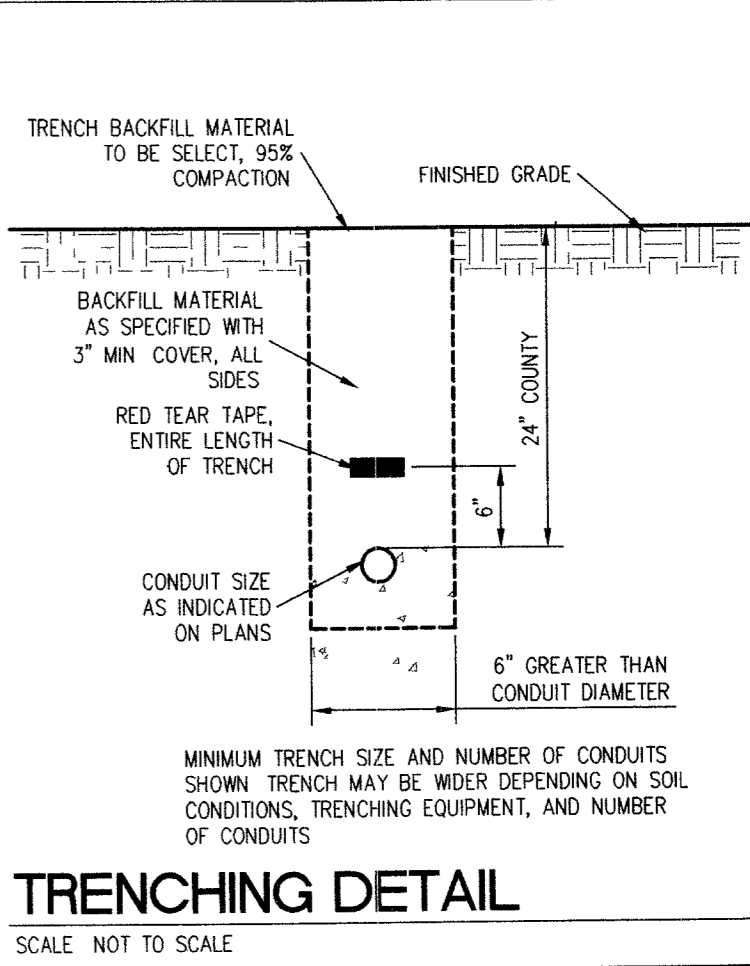
Call before you UnderGround

1-702-455-7511
1-702-229-6611

Avoid hitting overhead power lines. It's costly.

CALL BEFORE YOU DO OVERHEAD

1-702-227-2929



CLARK COUNTY, NEVADA

SECTION 18
TOWNSHIP 19 SOUTH
RANGE 60 EAST, M.D.M.

DATE: 07/07/05
DRAFTER: DMB
DESIGNER: DMB
CHECKED: TJS
PROJECT NO. PINO402-001

T-2
SHEET 9 OF 44
CLV DWG # 3071930
CC HTE# 05-7995