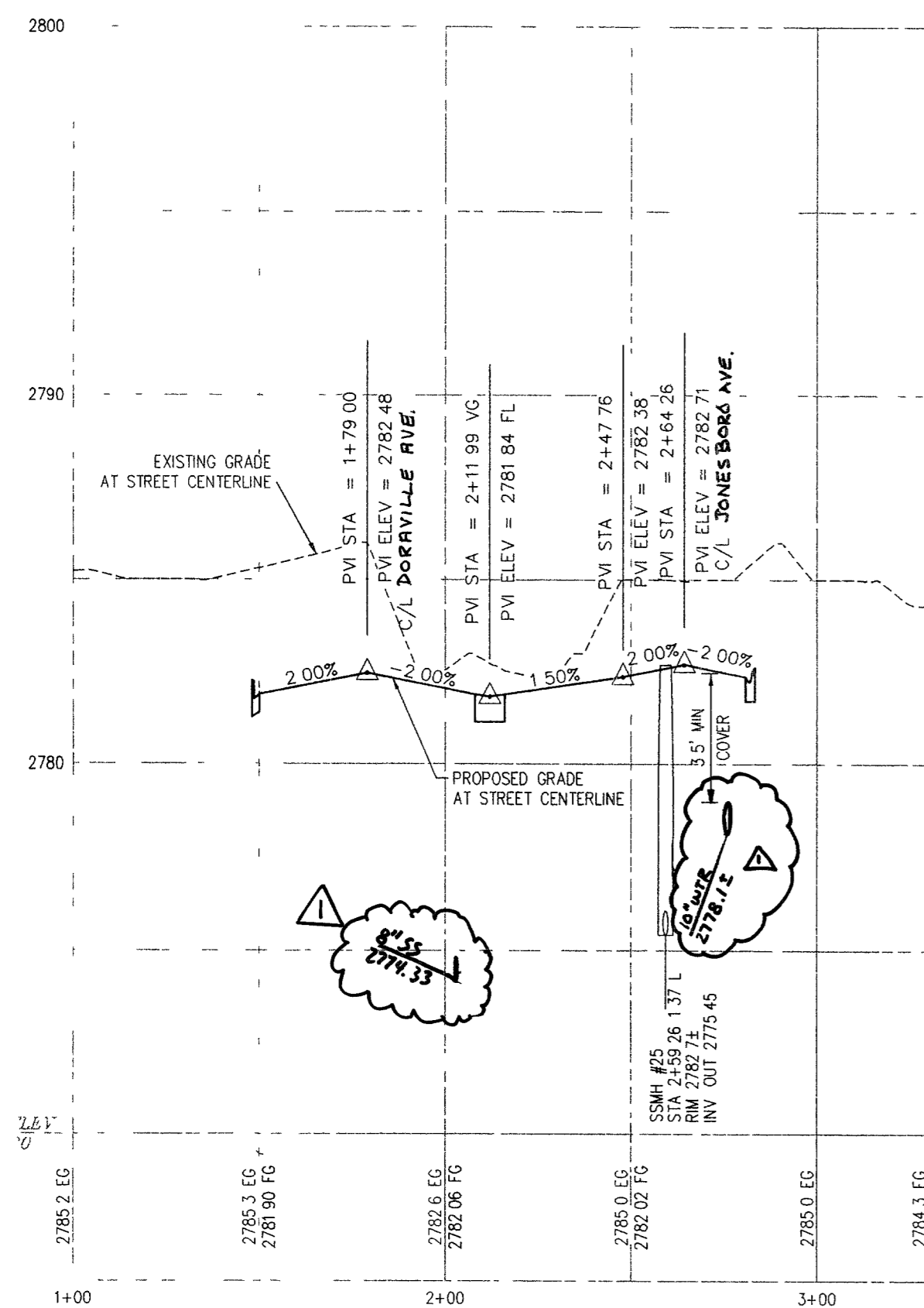
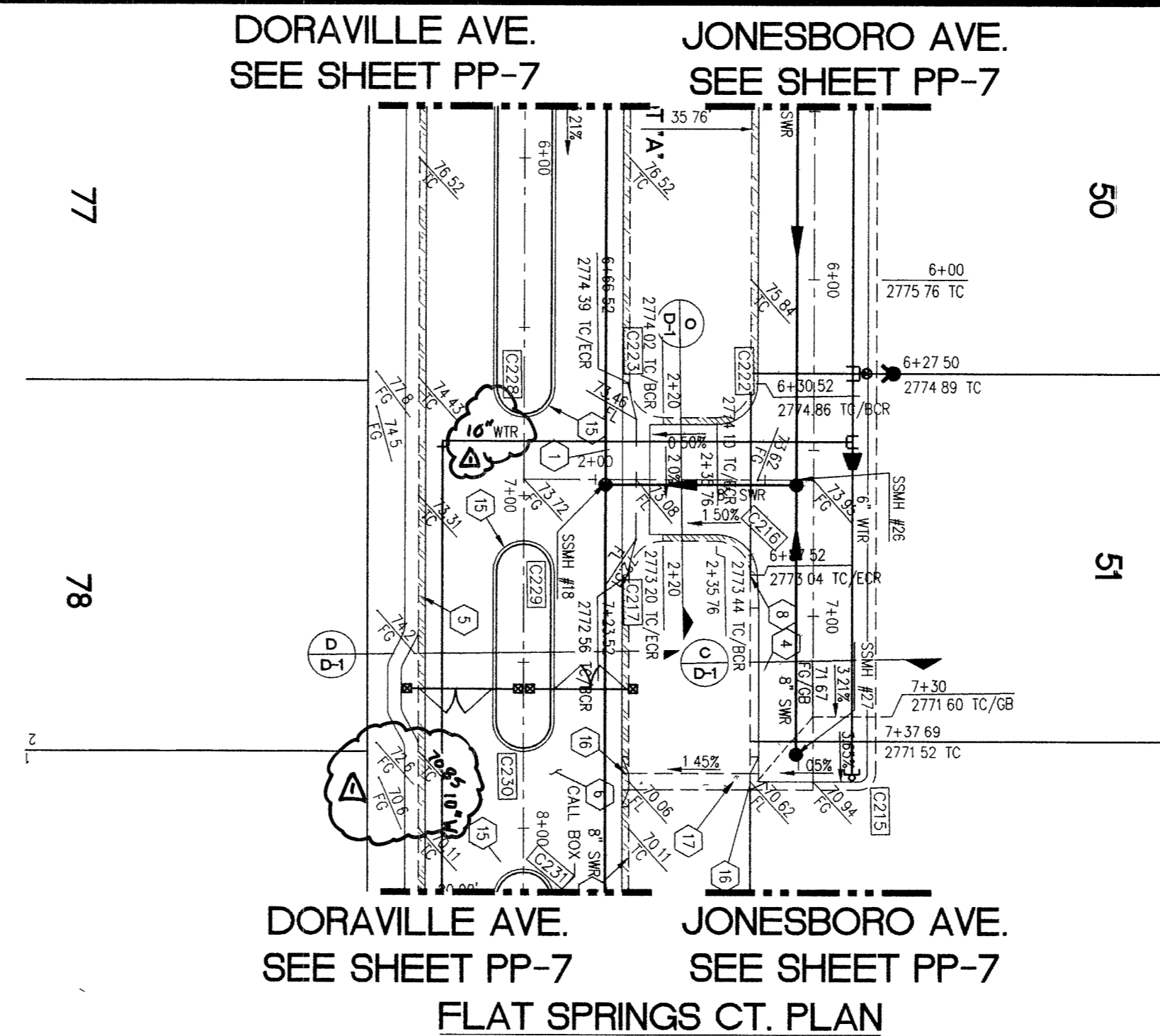


**STORM VALLEY CT. PLAN**  
(37' PRIVATE ROADWAY ESMT, P U E & CLV PUBLIC SEWER ESMT)

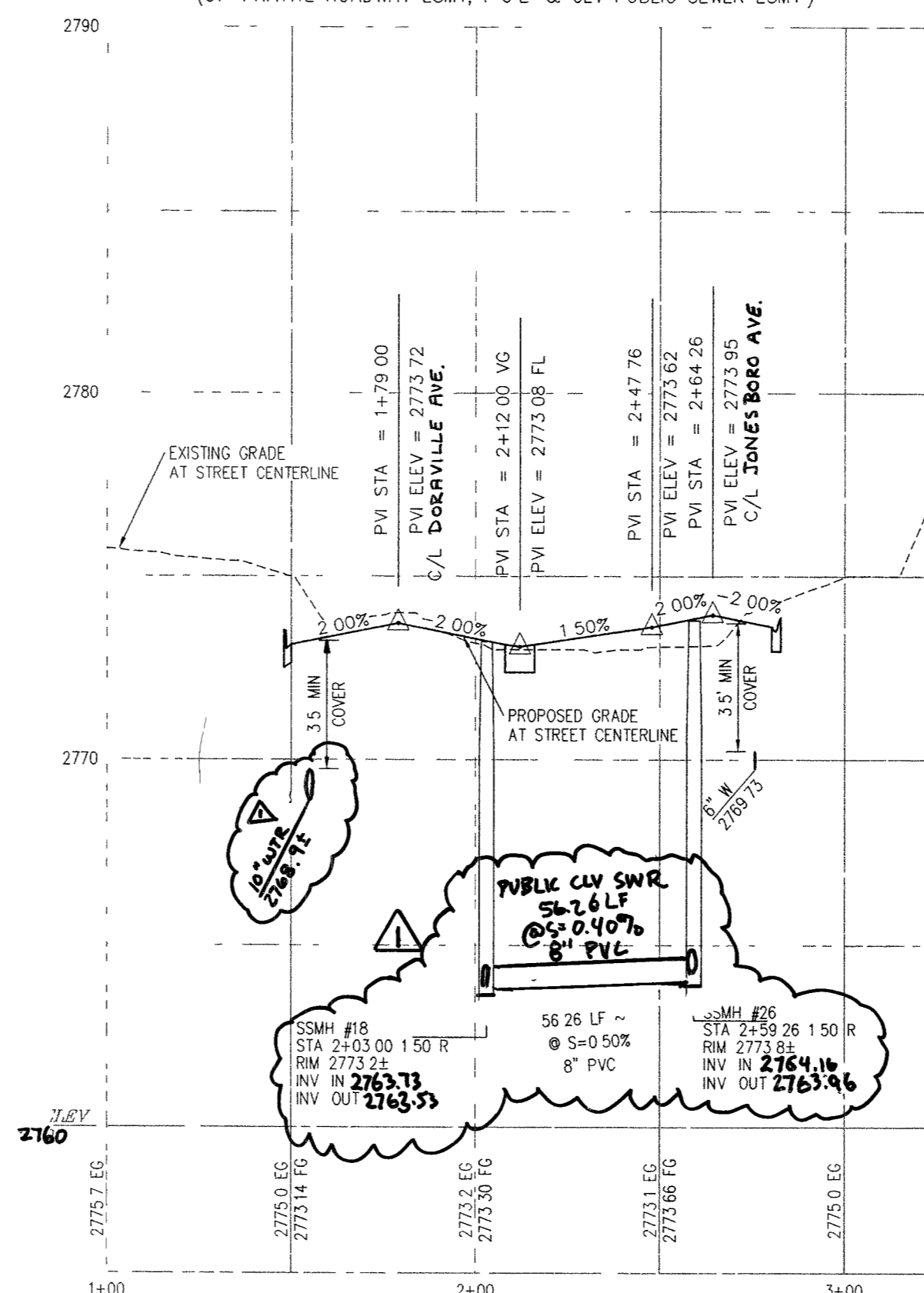


**PROFILE**

HOR . 1"=40'  
VERT . 1"=4'

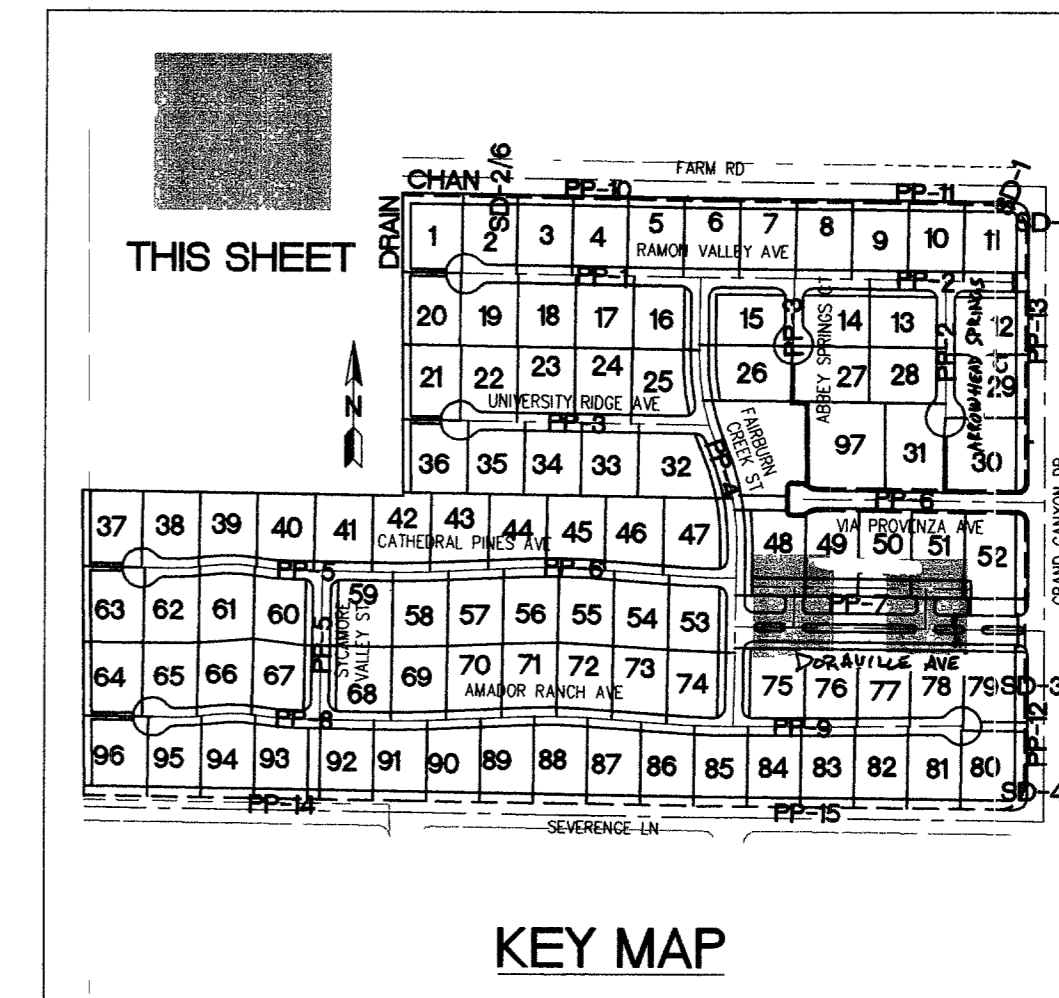


**FLAT SPRINGS CT. PLAN**  
(37' PRIVATE ROADWAY ESMT, P U E & CLV PUBLIC SEWER ESMT)



**PROFILE**

HOR 1"=40'  
VERT 1"=4'



**CONSTRUCTION NOTES**

- 1) CONSTRUCT 8" WIDE CROSS GUTTER PER DETAIL CCAUSD #228 (SEE DETAIL ON SHEET D-2)
- 2) CONSTRUCT 4" WIDE BY 4" THICK SIDEWALK PER CCAUSD #234
- 3) CONSTRUCT SIDEWALK RAMPS USING ARMOR TILE TRUNCATED DOMES OR EQUIVALENT PER CCAUSD #235, CASE 1
- 4) CONSTRUCT ROLL CURB PER DETAIL CCAUSD #2 7A
- 5) CONSTRUCT "L" TYPE CURB PER CCAUSD #216
- 6) CONSTRUCT 2" AC ON 4" TYPE II A/B ON 6" TYPE I OR NATIVE. SEE SECTION "C", SHEET D-1
- 7) SAWCUT, REMOVE AND REPLACE EXISTING PAVEMENT PER PROP STREET SECTION
- 8) CONSTRUCT 10" TRANSITION FROM ROLL CURB TO "L" CURB SEE DETAIL "X", SHEET D-2
- 9) CONSTRUCT 5" WIDE BY 4" THICK SIDEWALK PER CCAUSD #234
- 10) CONTRACTOR TO VERIFY ELEV OF EXIST CURB AND GUTTER, PAINT, STORM DRAIN, RETAINING WALL ELEVATIONS, AND SDWK PRIOR TO CONST. NOTIFY ENGINEER OF ANY CONFLICTS
- 14) CONST SIDEWALK UNDERDRAIN PER CCAUSD NO 236
- 15) CONST "A" TYPE MEDIAN CURB PER CCAUSD #219
- 16) CONST DEPRESSED CURB PER CCAUSD #227
- 17) CONST BLOCK WALL OPENING PER SECTION "C", SHEET D-4
- 18) CONST 4" AC ON 4" TYPE II A/B ON 9" TYPE I SEE SECTION "A", SHEET D-1
- 19) CONST 4" AC ON 4" TYPE II A/B ON 9" TYPE I SEE SECTION "C", SHEET D-5
- 20) CONST 4" AC ON 4" TYPE II A/B ON 9" TYPE I SEE SECTION "E", SHEET D-1
- 21) CONST 3" AC ON 9" TYPE II A/B, SEE SECTION "B", SHEET D-1
- 22) CONST 3" AC ON 9" TYPE II A/B, SEE SECTION "B", SHEET D-3
- 23) CONSTRUCT CONC CUTOFF WALL PER SECTION "C", SHEET D-3
- 24) CONCRETE ENCASUREMENT PER UDACS SEC 219
- 25) CONST BLOCK WALL OPENING PER DETAIL "D" ON SHT D-6

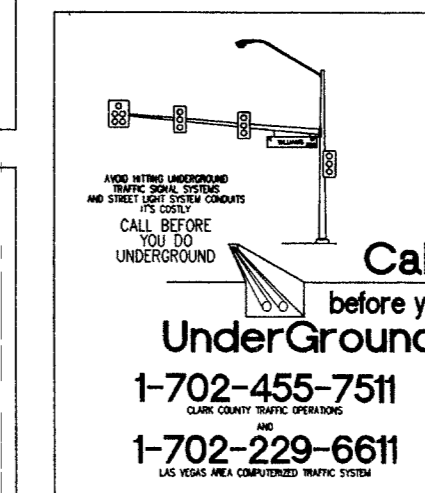
**EASEMENT NOTES**

- 1) 37' DRAINAGE EASEMENT, LVWD WATER EASEMENT, PUBLIC UTILITY EASEMENT (TO BE MAINTAINED BY H.O.A.) AND CLV PUBLIC SEWER EASEMENT
- 2) 20' DRAINAGE EASEMENT (TO BE MAINTAINED BY H.O.A.) AND CLV PUBLIC SEWER EASEMENT
- 3) DRAINAGE EASEMENT TO BE PRIVATELY MAINTAINED BY H.O.A. (SEE DIMENSION ON PLAN FOR EASEMENT WIDTH)

BACK OF CURB CURVE TABLE				
CURVE	LENGTH	RADIUS	DELTA	TANGENT
C211	15.71	10.00	90°00'00"	10.00
C212	15.71	10.00	90°00'00"	10.00
C215	7.85	5.00	90°00'00"	5.00
C216	15.71	10.00	90°00'00"	10.00
C217	15.71	10.00	90°00'00"	10.00
C221	15.71	10.00	90°00'00"	10.00
C222	15.71	10.00	90°00'00"	10.00
C223	15.71	10.00	90°00'00"	10.00
C224	15.71	10.00	90°00'00"	10.00
C225	25.13	8.00	180°00'00"	-
C226	25.13	8.00	180°00'00"	-
C227	25.13	8.00	180°00'00"	-
C228	25.13	8.00	180°00'00"	-
C229	25.13	8.00	180°00'00"	-
C230	25.13	8.00	180°00'00"	-
C231	25.13	8.00	180°00'00"	-

**BENCHMARK**  
BENCHMARK FOUND CITY OF LAS VEGAS RIVET AND ROUND PLATE IN CONCRETE CYLINDER, SOUTHEAST CORNER OF ELKHORN RD AND CONQUISTADOR ST  
BM NO 66 STATION 8LV90 19NNW6 ELEVATION = 2803.77 (NAVD 88)

**BASIS OF BEARING**  
THE BASIS OF BEARINGS FOR THIS SURVEY IS BASED ON THE FOUND AND HELD MONUMENTS MARKING THE SOUTHERLY LINE OF THE SOUTHWEST QUARTER (SW1/4) OF THE SOUTHEAST QUARTER (SE1/4) OF SECTION 15, T18S, R10E, W04, CLARK COUNTY, NEVADA PER RECORD OF SURVEY BOOK 123, PAGE 32, CLARK COUNTY RECORDER'S OFFICE AS SOUTH 88°46'46" EAST



CLARK COUNTY DEPARTMENT OF DEVELOPMENT SERVICES  
ACCEPTANCE OF PLANS FOR FILING  
BY: Todd J. Steadham  
TODD J. STEADHAM  
Exp. 06/30/2008  
CLV CIVIL ENGINEER  
Lic. No. 15292

**SLATER HANIFAN GROUP**  
CONSULTING ENGINEERS & PLANNERS  
5740 S. ARVILLE STREET #216, LAS VEGAS, NV 89118  
PHONE (702) 284-5300 FAX (702) 284-5399

**SECTION 18**  
TOWNSHIP 19 SOUTH  
RANGE 60 EAST, M.D.M.

DATE: 07/07/05  
DRAFTER: DMB  
DESIGNER: DMB  
CHECKED: TJS  
PROJECT NO. PIN0402-001

**PP-18**  
SHEET 31 OF 44  
CLV DWG #307V930  
CC HTE# 05-7995

81758 Rmm 02961