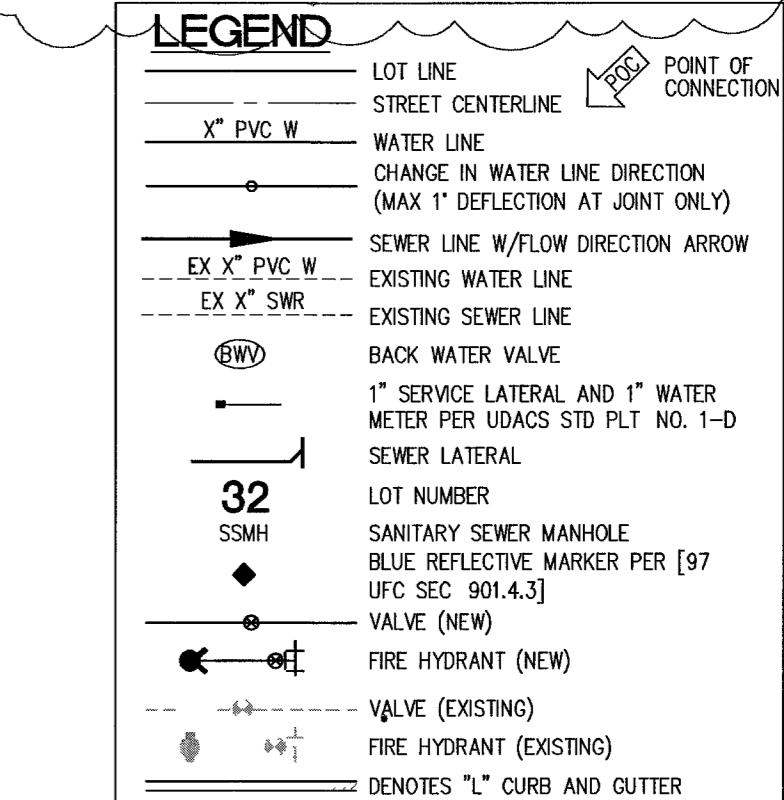
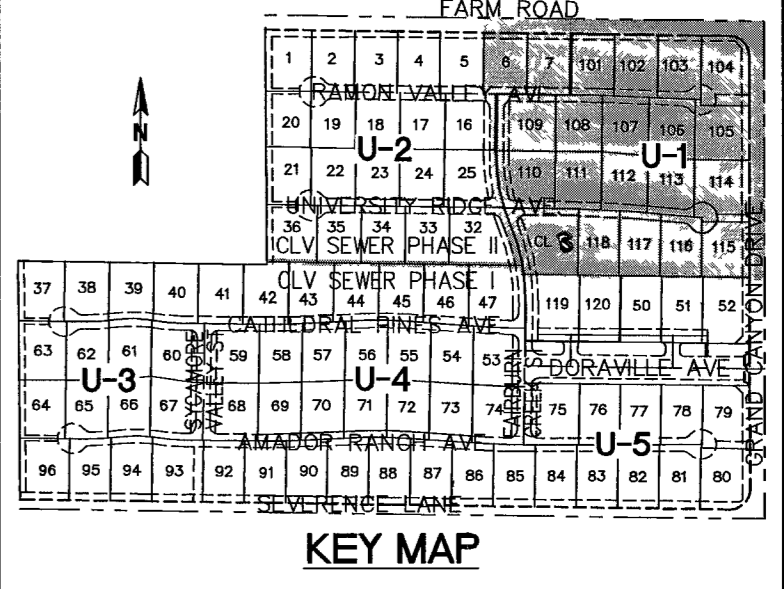


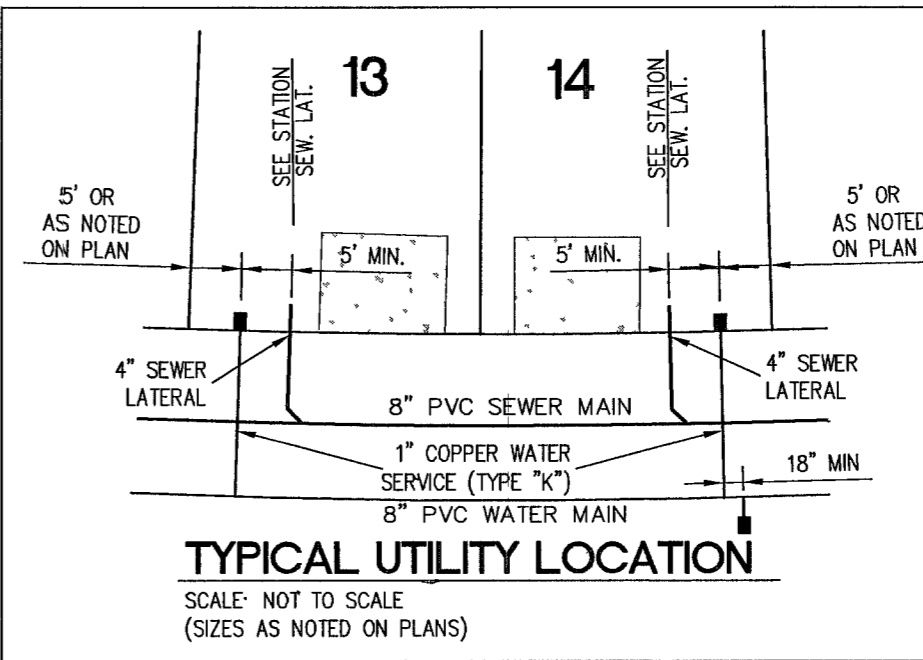
WATERLINE NOTES

- 1 6" PVC WATER LINE
- 2 6" 11.25' BEND
- 3 GATE VALVE
- 4 8" PVC WATER LINE
- 5 8" D.I.P. WATER LINE
- 6 8" 11.25' BEND
- 7 8" 22.5' BEND
- 8 8" 90° BEND
- 9 8" TEE
- 10 8" GATE VALVE
- 11 8" x 6" REDUCER
- 12 10" PVC WATER LINE
- 13 10" 11.25' BEND
- 14 10" 90° BEND
- 15 10" TEE
- 16 10" GATE VALVE
- 17 10" x 6" REDUCER
- 18 10" x 8" REDUCER
- 19 FIRE HYDRANT ASSEMBLY W/ 6" GATE VALVE PER UDACS STD. P.L.T. NO. 7
- 20 CAP AND 2" BLOW OFF ASSEMBLY PER UDACS STD. P.L.T. NO. 4A
- 21 1" IRRIGATION SERVICE W/ 1" METER AND 1" RPPA PER UDACS STD. P.L.T. NO. 1-B AND 11-A
- 22 REMOVE CAP AND BLOW OFF PER UDACS PLT. NO. 4A, NOTE NO. 1, AND CONNECT TO EXISTING MAIN (FIELD VERIFY INVERT)
- 23 10" D.I.P. WATER LINE
- 24 10" x 8" TEE
- 25 10" x 6" TEE
- 26 10" x 6" TEE
- 27 10" x 10" M.J. TAPPING SLEEVE W/ 10" TAPPING
- 28 10" 45° VERTICAL JOINT PER UDACS PLT. NO. 15
- 29 IRRIGATION SLEEVES
- 30 10" 22.5' BEND
- 31 8" x 6" TEE
- 32 CONCRETE ENCASE PER UDACS SEC. 2.19 PER CLV DWG. #327Y-4744
- 33 8" x 6" TEE
- 34 8" 5" BEND W/ RESTRAINT JOINTS
- 35 CONCRETE ENCASE PER UDACS SEC. 2.19 PER CLV DWG. #327Y-4744
- 36 INSTALL TEMP. CAP AND BLOW OFF ASSEMBLY PER UDACS STD. P.L.T. NO. 4A



ESTIMATE OF WATER QUANTITIES

10" PVC WATER PIPE	5124 LF
10" D.I.P. WATER PIPE	435 LF
8" PVC WATER PIPE	2602 LF
8" D.I.P. WATER PIPE	0 LF
8" 11.25' BEND	1
8" 22.5' BEND	1
8" 90° BEND	1
8" GATE VALVE	5
6" PVC WATER PIPE	930 LF
6" 11.25' BEND	2
6" 11.25' BEND	8
6" x 8" TEE	4
6" x 6" REDUCER	3
10" x 8" TEE	1
10" x 10" TEE	2
10" GATE VALVE	20
10" x 6" REDUCER	3
10" x 8" REDUCER	2
10" CROSS	2
FIRE HYDRANT ASSEMBLY PER UDACS STD. P.L.T. NO. 7	1
1" SERVICE LATERAL AND 3/4" WATER METER PER UDACS STD. P.L.T. NO. 1-D	100
2" BLOW OFF ASSEMBLY PER UDACS STD. P.L.T. NO. 4A	11
1" IRRIGATION METER W/ 1" RPPA PER UDACS STD. P.L.T. NO. 1-B AND 11-A	3
10" x 10" M.J. TAPPING SLEEVE W/ 10" TAPPING VALVE PER UDACS 22	0
10" 45° VERTICAL JOINT PER UDACS 15	6

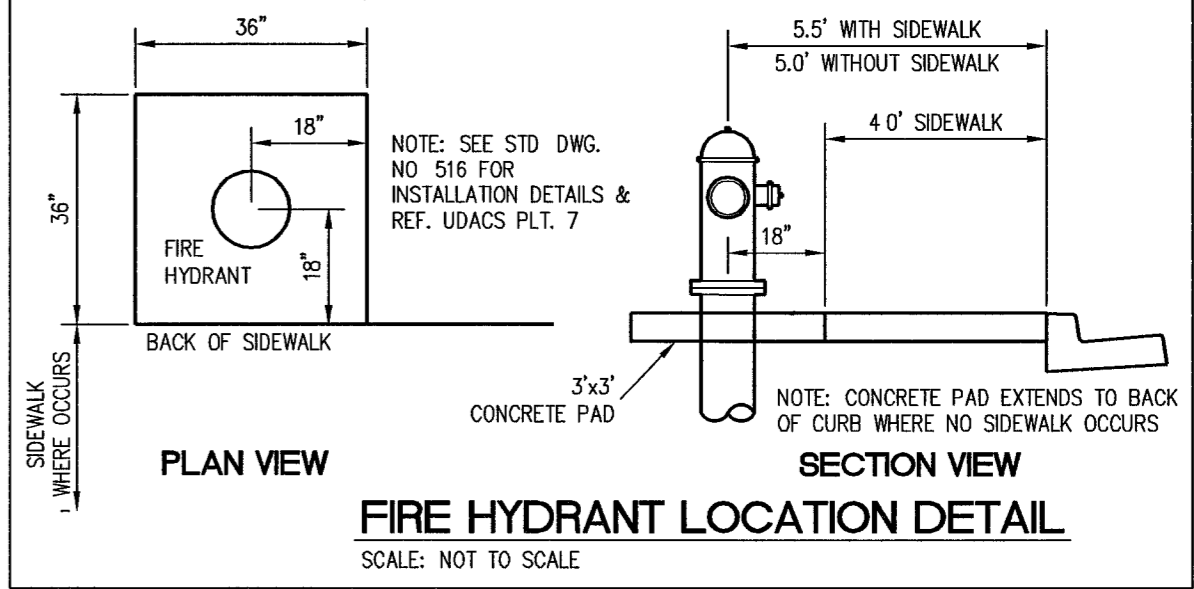


FIRE DEPARTMENT NOTES

- ALL WORK SHALL BE DONE IN STRICT ACCORDANCE WITH THE 1997 EDITION OF THE UNIFORM FIRE CODE, AND THE 1995 EDITION OF NATIONAL FIRE PROTECTION ASSOCIATION PAMPHLET #24.
- ON ANY BUILDING CONSTRUCTION, ACCESSIBLE FIRE HYDRANTS SHALL BE INSTALLED BEFORE COMBUSTIBLE MATERIALS ARE DELIVERED TO THE SITE AND CONSTRUCTION COMMENCES. SAID FIRE HYDRANTS SHALL BE IN GOOD WORKING ORDER WITH THE REQUIRED WATER SUPPLY.
- IF DURING CONSTRUCTION IT BECOMES NECESSARY TO CLOSE ANY CONTROL VALVE OR PLACE A HYDRANT OUT OF SERVICE, THE CLARK COUNTY FIRE DEPARTMENT MUST BE CONTACTED.
- PAINTING OF CURBS AND/OR STRIPING OF ASPHALT AREAS AND PROTECTION OF HYDRANTS FROM PHYSICAL INJURY PER FIRE HYDRANT INSTALLATION SPECIFICATIONS OF THE FIRE PREVENTION BUREAU.
- NO FIRE HYDRANT SHALL BE LOCATED WITHIN 25 FEET OF ANY STRUCTURE, OR 5 FEET OF A DRIVEWAY, POWER POLE, LIGHT STANDARD, OR ANY OTHER OBSTRUCTION FOR WALL, FENCE AND PLANTER LOCATIONS. A PERMETER AROUND THE HYDRANT MEASURING A MINIMUM OF 3 FEET FROM ITS EXTERIOR SHALL BE MAINTAINED CLEAR OF ALL OBSTRUCTION AT ALL TIMES.
- AT ALL TIMES DURING CONSTRUCTION SUITABLE EMERGENCY VEHICLE ACCESS ROAD MUST BE MAINTAINED. ROADWAYS MUST BE SMOOTH, COMPACTED AND CAPABLE OF SUPPORTING THE IMPOSED LOADS OF ALL EMERGENCY VEHICLES.
- PRIOR TO ACCEPTANCE OF ANY FIRE SERVICE MAIN, A SATISFACTORY HYDROSTATIC TEST WITH PIPING JOINTS UNCOVERED MUST BE CONDUCTED. APPROVED PLANS AND A CONTRACTOR'S MATERIALS AND TEST CERTIFICATE MUST BE PROVIDED AT TIME OF INSPECTION.
- BLUE REFLECTIVE MARKERS MUST BE INSTALLED BEFORE FINAL HYDRANT ACCEPTANCE CAN BE ATTAINED [97 UFC SEC. 901.4.3].

FIRE DEPARTMENT DATA

FIRE FLOW REQUIREMENT: 2250 GALLONS PER MINUTE AT 20 PSI RESIDUAL PRESSURE BASED ON:
 SQUARE FOOTAGE: LESS THAN 2700 SQUARE FEET
 OCCUPANCY: SINGLE FAMILY RESIDENCE
 BUILDING DETAIL: "w" - R3-01 N



Call before you Dig.
 1-702-227-2929
 1-800-227-2600
 UNDERGROUND SERVICE (USA)

Call before you UnderGround
 1-702-455-7511
 1-702-229-6611
 LAS VEGAS VALLEY WATER DISTRICT PROJECT # H10887

COUNTY OF CLARK
 FIRE DEPARTMENT
 APPROVED
 DATE: 5-10-06

- EASEMENT NOTES**
- 37" DRAINAGE EASEMENT, LVWD WATER EASEMENT, PUBLIC UTILITY EASEMENT (TO BE MAINTAINED BY H.O.A.) AND CLV PUBLIC SEWER EASEMENT.
 - 20" DRAINAGE EASEMENT (TO BE MAINTAINED BY H.O.A.) AND CLV PUBLIC SEWER EASEMENT.
 - DRAINAGE EASEMENT TO BE PRIVATELY MAINTAINED BY H.O.A. (SEE DIMENSION ON PLAN FOR EASEMENT WIDTH)

- NOTES**
- H.O.A. RESPONSIBLE FOR ALL WATER SERVICE LATERALS PAST METER.
 - INSTALL PIPELINE MARKER BALLS IN TRENCH ABOVE EACH HORIZONTAL ELBOW FITTING, PER UDACS PLATE NO. 27.
 - ALL SEWER/STORM DRAIN CROSSING WATER LINES MUST CONFORM TO SECTION 2.19 OF THE UNIFORM DESIGN AND CONSTRUCTION STANDARDS FOR POTABLE WATER SYSTEMS (UDACS) FOR WATER AND STORM MAIN CROSSINGS AND CLEARANCES.
- NOTE: THIS PROJECT PLAN APPROVAL CONTINGENT ON PROJECT # H108723, CARRIANA PLAN APPROVAL.

REDUCED PRESSURE PRINCIPLE ASSEMBLY (1) 1"

APPROVED REDUCED PRESSURE PRINCIPLE ASSEMBLY(S) SHALL BE INSTALLED PER THE UDACS PLATE NO. 11A. NO WATER SHALL BE TAKEN FROM A SERVICE REQUIRING BACKFLOW PREVENTION UNTIL THE REDUCED PRESSURE PRINCIPLE ASSEMBLY HAS BEEN SUCCESSFULLY TESTED BY THE LVWD.

ANY BLOCK WALL OR OTHER FENCE MATERIAL SHALL BE DESIGNED AND CONSTRUCTED AROUND THE OUTSIDE OF THE EASEMENT(S) TO ALLOW THE DISTRICT DIRECT ACCESS FROM THE ADJACENT RIGHT-OF-WAY.

EASEMENTS SHALL BE CLEARLY MARKED OR STAKED PRIOR TO THE START OF CONSTRUCTION.

PRIVATE WELLS TO BE REMOVED FROM SERVICE

THE EXISTING PRIVATE WELL IS TO BE ABANDONED THE DISTRICT WATER SERVICE WILL REMAIN IN THE OFF POSITION UNTIL THE WELL HAS BEEN ABANDONED (WHICH MUST BE ACCOMPLISHED WITHIN 30 DAYS OF THE INSTALLATION OF THE DISTRICT SERVICE), OR PHYSICALLY DISCONNECTED FROM THE ONSITE SYSTEM. AN INSPECTION OF THE ONSITE SYSTEM WILL BE MADE BY THE DISTRICT'S INSPECTION DIVISION TO VERIFY THE WELL HAS BEEN DISCONNECTED FROM THE ONSITE SYSTEM, AND THAT THE WELL IS NO LONGER FUNCTIONAL. THE STATE OF NEVADA DIVISION OF WATER RESOURCES (TELEPHONE NUMBER 702-486-2770) MAY BE CONTACTED FOR INFORMATION CONCERNING REQUIREMENTS AND PROCEDURES FOR ABANDONING WELLS.

WATER MAIN JOINT DEFLECTION (PVC 4"-24")

PVC PIPE SHALL BE DEFLECTED AT THE JOINT ONLY. THE MAXIMUM ALLOWABLE DEFLECTION SHALL BE ONE (1) DEGREE PER JOINT WITH A MINIMUM RADIUS OF CURVATURE OF 1,150 FEET, PER UDACS 2.06.01 AND 2.06.02

FOR CHANGES IN DIRECTION EXCEEDING THE MAXIMUM ALLOWABLE JOINT DEFLECTION, FITTINGS SHALL BE USED

SLATER HANIFAN GROUP
S-I-G
 CONSULTING ENGINEERS & PLANNERS
 5740 S. ARVILLE STREET #216, LAS VEGAS, NV 89118
 PHONE (702) 284-5300

SECTION 18
 TOWNSHIP 19 SOUTH
 RANGE 60 EAST, N.D.M.

CLARK COUNTY, NEVADA

PINNACLE HOMES
 SABLE CREEK
 UTILITY PLAN 1

DATE: 07/07/05
 DRAFTER: DMB
 DESIGNER: DMB
 CHECKED: TJS
 PROJECT NO.
 PIN0402-001

APPROVED FOR CONSTRUCTION 1st. App. 7-11-05

U-1
 SHEET 3 OF 44
 CLV DWG # 307V930
 CC HT# # 05-7995

92408