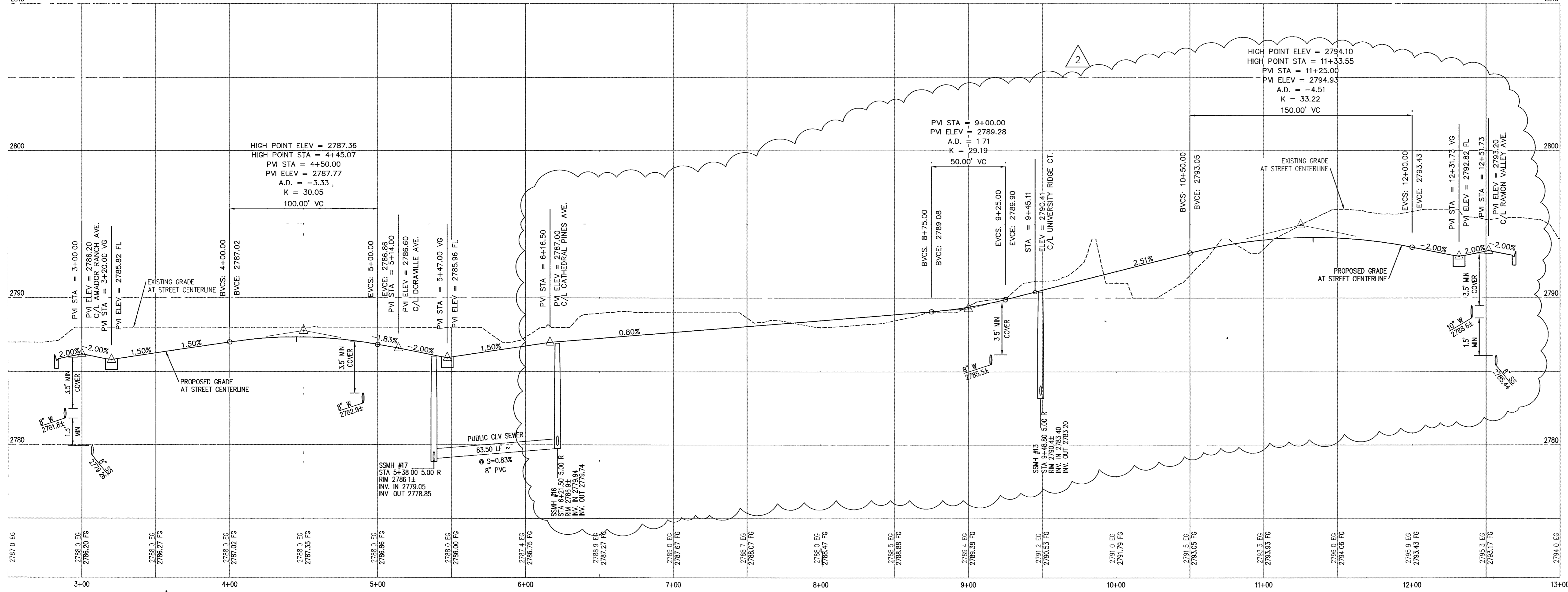


AMADOR RANCH AVE SEE SHEET PP-9      DORAVILLE AVE SEE SHEET PP-7      FAIRBURN CREEK ST (37' PRIVATE ROADWAY ESMT, P.U.E. & CLV PUBLIC SEWER ESMT.)      RAMON VALLEY AVE SEE SHEET PP-1



- ### CONSTRUCTION NOTES
- CONSTRUCT 8" WIDE CROSS GUTTER PER DETAIL CCAUSD #228 (SEE DETAIL ON SHEET D-2)
  - CONSTRUCT 4" WIDE BY 4" THICK SIDEWALK PER CCAUSD #234
  - CONSTRUCT SIDEWALK RAMPS USING ARMOR TILE TRUNCATED DOMES OR EQUIVALENT PER CCAUSD #235, CASE 1
  - CONSTRUCT ROLL CURB PER DETAIL CCAUSD #217A
  - CONSTRUCT "L" TYPE CURB PER CCAUSD #216
  - CONSTRUCT 2" AC ON 4" TYPE II A.B ON 6" TYPE I OR NATIVE, SEE SECTION "C", SHEET D-1.
  - SAWCUT, REMOVE AND REPLACE EXISTING PAVEMENT PER PROP. STREET SECTION
  - CONSTRUCT 10" TRANSITION FROM ROLL CURB TO "L" CURB SEE DETAIL "X", SHEET D-2.
  - CONSTRUCT 5" WIDE BY 4" THICK SIDEWALK PER CCAUSD #234
  - CONTRACTOR TO VERIFY ELEV. OF EXIST CURB AND GUTTER, P.W.T., STORM DRAIN, RETAINING WALL ELEVATIONS, AND SDWK. PRIOR TO CONST. NOTIFY ENGINEER OF ANY CONFLICTS.
  - CONST SIDEWALK UNDERDRAIN PER CCAUSD NO 236
  - CONST "A" TYPE MEDIAN CURB PER CCAUSD #219
  - CONST DEPRESSED CURB PER CCAUSD #227
  - CONST. BLOCK WALL OPENING PER SECTION "C", SHEET D-4.
  - CONST. 4" AC ON 4" TYPE II A.B ON 9" TYPE I, SEE SECTION "A", SHEET D-1
  - CONST. 4" AC ON 4" TYPE II A.B ON 9" TYPE I, SEE SECTION "C", SHEET D-3
  - CONST. 4" AC ON 4" TYPE II A.B ON 9" TYPE I, SEE SECTION "E", SHEET D-1.
  - CONST. 3" AC ON 9" TYPE II A.B., SEE SECTION "B", SHEET D-1
  - CONST. 3" AC ON 9" TYPE II A.B., SEE SECTION "B", SHEET D-3.
  - CONSTRUCT CONC. CUTOFF WALL PER SECTION "C", SHEET D-3.
  - CONCRETE ENCASUREMENT PER UDACS SEC 2.19
  - CONST BLOCK WALL OPENING PER DETAIL "D" ON SHT. D-6

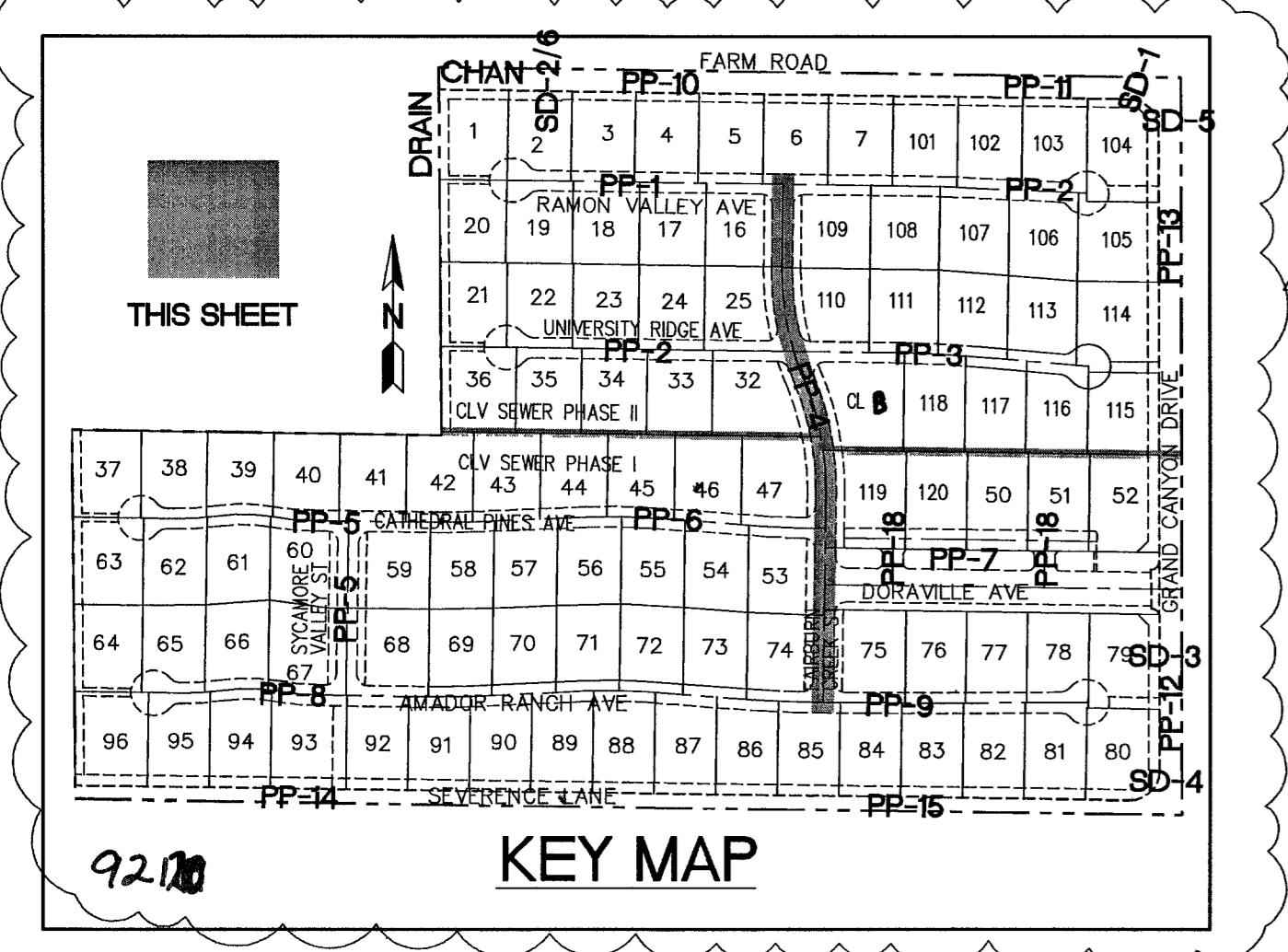
#### CENTERLINE CURVE TABLE

CURVE	LENGTH	RADIUS	DELTA	TANGENT
C127	148.60	481.50	174°09'59"	74.90
C128	50.24	481.50	53°42'44"	25.14
C129	214.25	518.50	233°03'32"	108.68
C141	58.31	1000.00	32°02'28"	29.16

#### BACK OF CURB CURVE TABLE

CURVE	LENGTH	RADIUS	DELTA	TANGENT
C142	31.42	20.00	90°00'00"	20.01
C143	26.50	20.00	75°42'44"	15.60
C144	39.41	20.00	112°53'37"	30.16
C158	31.41	20.00	89°59'08"	19.99
C159	104.35	500.00	115°27'29"	52.37
C160	35.60	20.00	101°58'22"	24.69
C164	24.15	20.00	89°00'00"	13.79
C165	24.87	489.96	231°01"	12.44
C166	206.61	500.00	233°03'32"	104.80
C167	31.42	20.00	90°00'00"	20.00
C168	57.23	981.50	32°02'28"	28.63
C184	59.39	1018.50	32°02'28"	29.70
C185	31.41	20.00	89°59'41"	20.00
C188	59.39	1018.50	32°02'28"	29.70
C202	31.46	20.00	90°00'00"	20.05
C203	31.42	20.00	90°00'00"	20.00
C204	57.23	981.50	32°02'28"	28.63
C208	113.82	463.00	143°05'06"	57.20
C209	214.57	537.00	225°33'37"	108.74
C210	31.41	20.00	89°59'41"	20.00
C213	7.85	5.00	90°00'00"	5.00
C214	7.85	5.00	90°00'00"	5.00
C220	31.42	20.00	90°00'00"	20.00
C225	25.13	8.00	180°00'00"	-

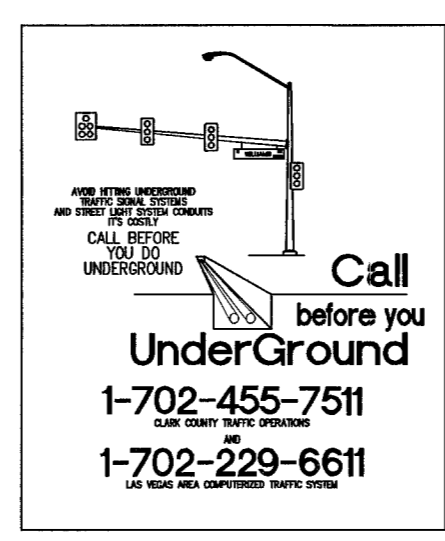
**PROFILE**  
HOR. : 1" = 40'  
VERT. : 1" = 4'



- ### EASEMENT NOTES
- 37' DRAINAGE EASEMENT, LVWD WATER EASEMENT, PUBLIC UTILITY EASEMENT (TO BE MAINTAINED BY H.O.A.) AND CLV PUBLIC SEWER EASEMENT.
  - 20' DRAINAGE EASEMENT (TO BE MAINTAINED BY H.O.A.) AND CLV PUBLIC SEWER EASEMENT.
  - DRAINAGE EASEMENT TO BE PRIVATELY MAINTAINED BY H.O.A. (SEE DIMENSION ON PLAN FOR EASEMENT WIDTH)



Avoid cutting underground utility lines. It's costly.  
**Call before you Dig.**  
1-800-227-2600  
UNDERGROUND SERVICE (USA)



### BENCHMARK

BENCHMARK: FOUND CITY OF LAS VEGAS RIVET AND ROUND PLATE IN CONCRETE CYLINDER, SOUTHEAST CORNER OF ELKHORN RD AND CONQUISTADOR ST  
BM NO. 66. STATION 8LV90 19NNW6 ELEVATION = 2803.77 (NAVD 88)

### BASIS OF BEARING

THE BASIS OF BEARINGS FOR THIS SURVEY IS BASED ON THE FOUND AND HELD MONUMENTS MARKING THE SOUTHERLY LINE OF THE SOUTHWEST QUARTER (SW1/4) OF THE SOUTHEAST QUARTER (SE1/4) OF SECTION 13, 119S, 86E, MDM, CLARK COUNTY, NEVADA PER RECORD OF SURVEY BOOK 123, PAGE 32, CLARK COUNTY RECORDER'S OFFICE AS SOUTH 88°46'46" EAST.

CLARK COUNTY DEPARTMENT OF DEVELOPMENT SERVICES  
ACCEPTANCE OF PLANS FOR FILING

BY \_\_\_\_\_

ACCEPTANCE OF THESE PLANS FOR FILING SHALL NOT BE CONSTRUED TO BE A PERMIT FOR OR AN APPROVAL OF ANY VIOLATION OF ANY OF THE PROVISIONS OF THE STATE OR COUNTY LAWS AND/OR SPECIFICATIONS CLARK COUNTY SHALL BE HELD FREE FROM DAMAGES WHICH MAY RESULT FROM THE CONSTRUCTION OF THE IMPROVEMENTS FROM THE ENGINEERING DESIGN DEPICTED HEREIN.

NOTE: POWER POLES AND/OR OTHER EXISTING FACILITIES NOT IN PROPER LOCATION BASED ON PROPOSED IMPROVEMENTS SHOWN HEREON WILL BE RELOCATED AT NO EXPENSE TO CLARK COUNTY

**SLATER HANIFAN GROUP**  
CONSULTING ENGINEERS & PLANNERS  
5740 S. ARVILLE STREET #216, LAS VEGAS, NV 89118  
PHONE (702) 284-5300 FAX (702) 284-5399

NO.	DESCRIPTION	DATE	BY	APP.
1	REVISED EASEMENT LINE	10/14/06	DMB	JTS
2	REVISED LOT LAYOUT, SHR. WTR. CURVE TABLE AND SET MAP	04/10/08	DMB	JTS

CLARK COUNTY, NEVADA

SECTION 18  
TOWNSHIP 19 SOUTH  
RANGE 60 EAST, M.D.M.

**PINNACLE HOMES**  
**SABLE CREEK**  
**FAIRBURN CREEK ST PLAN AND PROFILE**

DATE: 07/07/05  
DRAFTER: DMB  
DESIGNER: DMB  
CHECKED: JTS  
PROJECT NO. PIN0402-001

PROFESSIONAL ENGINEER - STATE OF NEVADA  
TODD STEADHAM  
Exp. 06/30/2006  
CIVIL  
PROF. NO. 15292

**PP-4**  
SHEET 17 OF 44  
CLV DWG # 307V930  
CC HIE # 05-7995