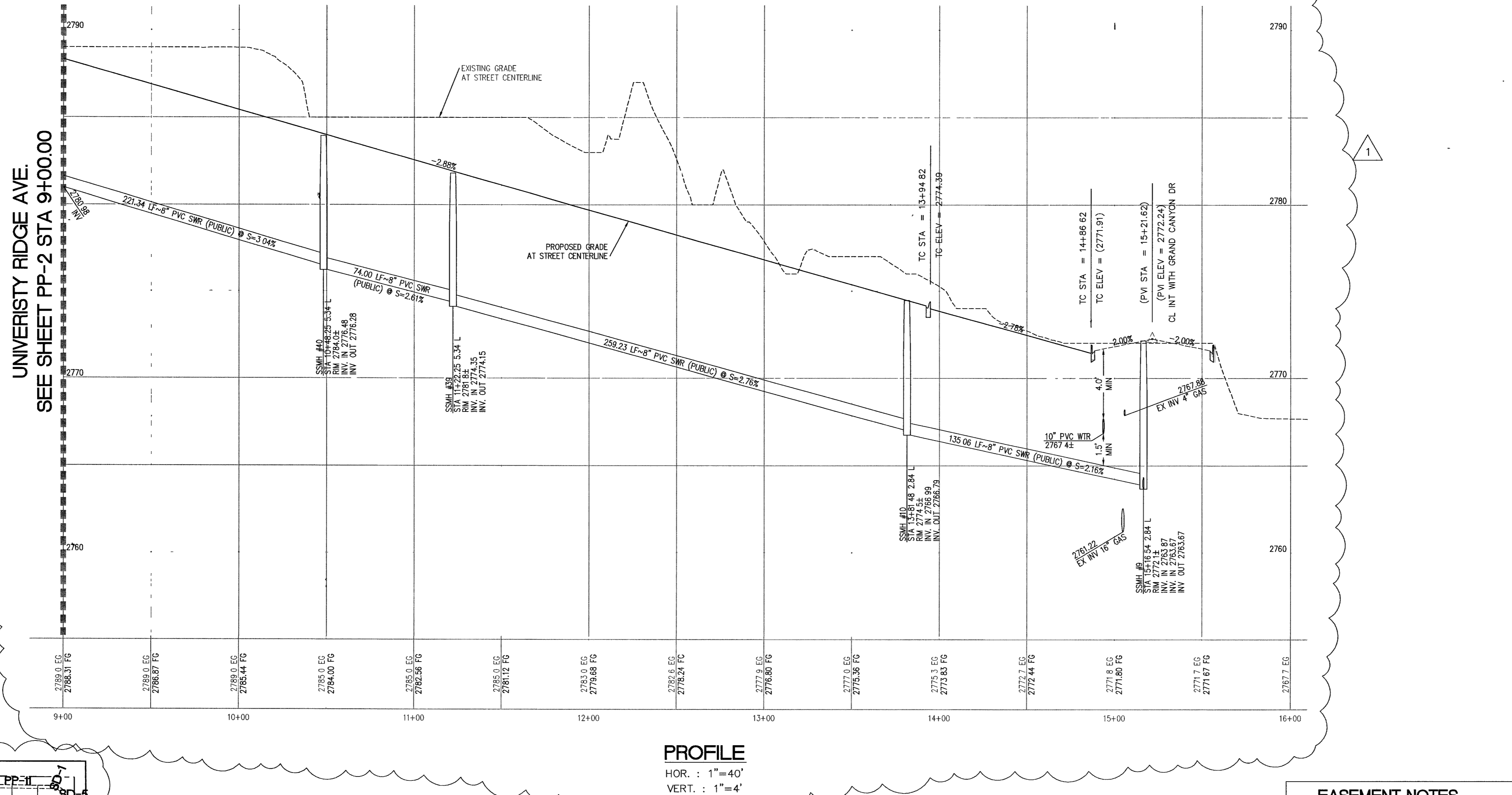
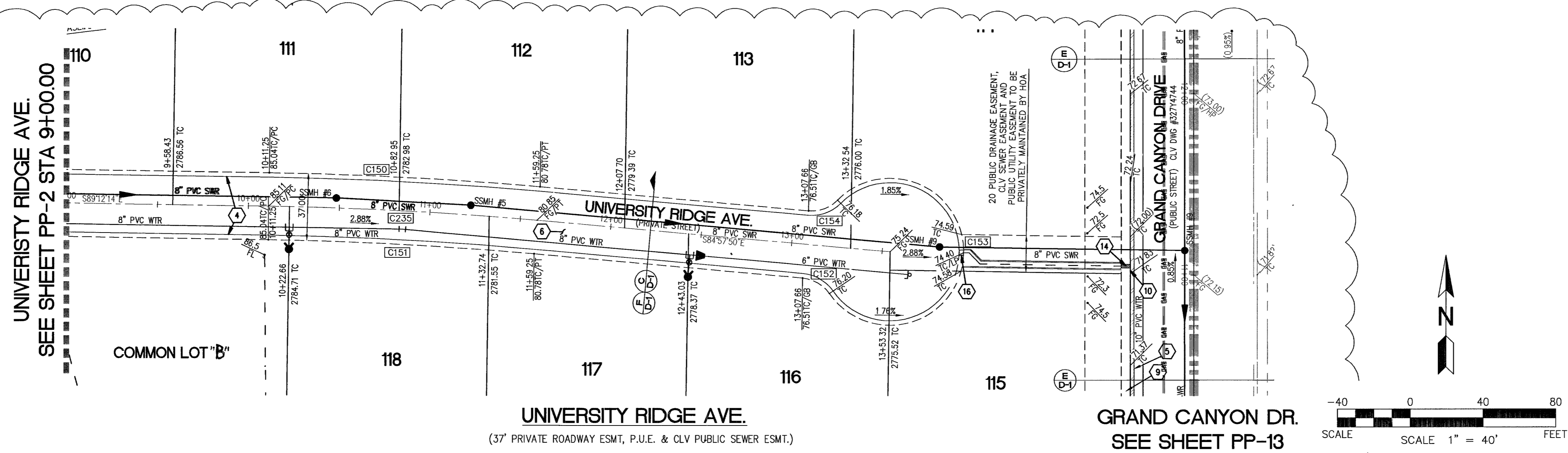


File: J:\PROJECTS\2006\05-20\PP-02\05-20-PP-02.dwg, 04/20/06, 16:25



- ### CONSTRUCTION NOTES
- CONSTRUCT 8" WIDE CROSS GUTTER PER DETAIL CCAUSD #228. (SEE DETAIL ON SHEET D-2)
  - CONSTRUCT 4" WIDE BY 4" THICK SIDEWALK PER CCAUSD #234.
  - CONSTRUCT SIDEWALK RAMP USING ARMOR TILE TRUNCATED DOMES OR EQUIVALENT PER CCAUSD #235, CASE 1
  - CONSTRUCT ROLL CURB PER DETAIL CCAUSD #217A
  - CONSTRUCT "L" TYPE CURB PER DETAIL CCAUSD #216.
  - CONSTRUCT 2" AC ON 4" TYPE II A.B. ON 6" TYPE I OR NATIVE, SEE SECTION "C", SHEET D-1.
  - SAWCUT, REMOVE AND REPLACE EXISTING PAVEMENT PER PROP. STREET SECTION.
  - CONSTRUCT 10' TRANSITION FROM ROLL CURB TO "L" CURB. SEE DETAIL "X", SHEET D-2.
  - CONSTRUCT 5" WIDE BY 4" THICK SIDEWALK PER CCAUSD #234
  - CONTRACTOR TO VERIFY ELEV. OF EXIST. CURB AND GUTTER, P.W.M.T, STORM DRAIN, RETAINING WALL ELEVATIONS, AND SOWK. PRIOR TO CONST NOTIFY ENGINEER OF ANY CONFLICTS.
  - CONST SIDEWALK UNDERDRAIN PER CCAUSD NO. 236
  - CONST. "A" TYPE MEDIAN CURB PER CCAUSD #219
  - CONST DEPRESSURED CURB PER CCAUSD #227
  - CONST BLOCK WALL OPENING PER SECTION "C", SHEET D-4.
  - CONST 4" AC ON 4" TYPE II A.B. ON 9" TYPE I, SEE SECTION "A", SHEET D-1.
  - CONST. 4" AC ON 4" TYPE II A.B. ON 9" TYPE I, SEE SECTION "D", SHEET D-3.
  - CONST. 4" AC ON 4" TYPE II A.B. ON 9" TYPE I, SEE SECTION "E", SHEET D-1
  - CONST 3" AC ON 9" TYPE II A.B., SEE SECTION "B", SHEET D-1.
  - CONST. 3" AC ON 9" TYPE II A.B., SEE SECTION "B", SHEET D-3
  - CONSTRUCT CONC. CUTOFF WALL PER SECTION "C", SHEET D-3.
  - CONCRETE ENCASUREMENT PER UDACS SEC. 2.19
  - CONST. BLOCK WALL OPENING PER DETAIL "D" ON SHT. D-6.

- ### EASEMENT NOTES
- 37' DRAINAGE EASEMENT, LVWD WATER EASEMENT, PUBLIC UTILITY EASEMENT (TO BE MAINTAINED BY H.O.A.) AND CLV PUBLIC SEWER EASEMENT.
  - 20' DRAINAGE EASEMENT (TO BE MAINTAINED BY H.O.A.) AND CLV PUBLIC SEWER EASEMENT.
  - DRAINAGE EASEMENT TO BE PRIVATELY MAINTAINED BY H.O.A. (SEE DIMENSION ON PLAN FOR EASEMENT WIDTH)

**CONTROLLED LOW STRENGTH MATERIAL (CLSM)**

PROTECT WATERLINES IN PLACE WHEREVER A WATERLINE IS ABOVE A STORM DRAIN OR SEWER WHERE COMPACTION REQUIREMENTS UNDER A WATERLINE CANNOT BE MET. BACKFILL TRENCH WITH CLASS I / CLASS II CONTROLLED LOW STRENGTH MATERIAL (CLSM) TO THE SPRINGLINE OF THE WATERLINE THIS REQUIREMENT IS FOR STRUCTURAL SUPPORT ONLY. ADDITIONAL HEALTH REGULATIONS MAY APPLY PER UDACS 2.19.

**BENCHMARK**

BENCHMARK FOUND CITY OF LAS VEGAS RIVET AND ROUND PLATE IN CONCRETE CYLINDER, SOUTHEAST CORNER OF ELKHORN RD. AND CONQUISTADOR ST.

BM NO. 66. STATION 8LV90 19NNW6 ELEVATION = 2803.77 (NAVD 88)

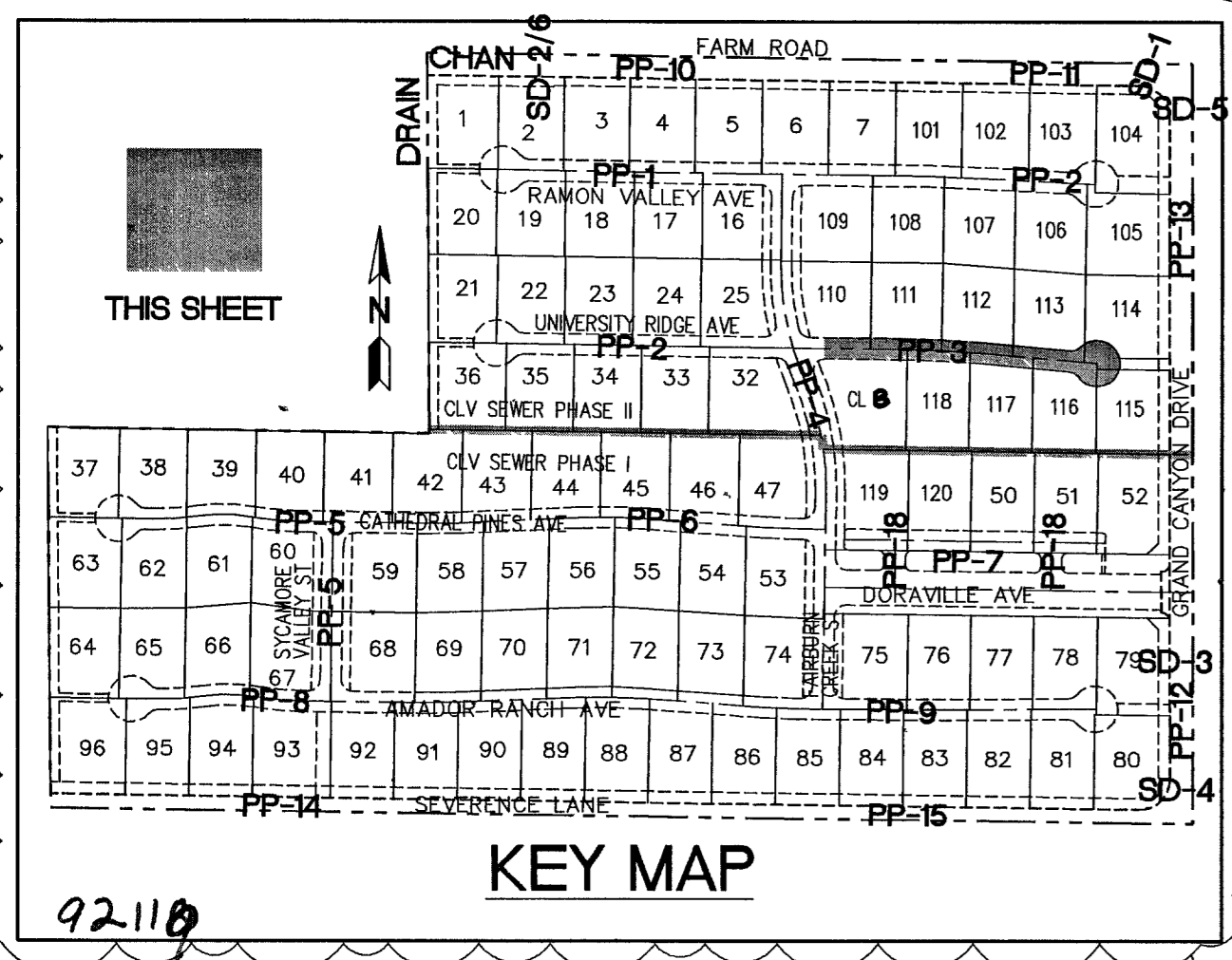
**BASIS OF BEARING**

THE BASIS OF BEARINGS FOR THIS SURVEY IS BASED ON THE FOUND AND HELD MONUMENTS MARKING THE SOUTHERLY LINE OF THE SOUTHWEST QUARTER (SW1/4) OF THE SOUTHEAST QUARTER (SE1/4) OF SECTION 13, T19S, R60E, MDM, CLARK COUNTY, NEVADA PER RECORD OF SURVEY BOOK 123, PAGE 32, CLARK COUNTY RECORDER'S OFFICE AS SOUTH 88°46'46" EAST.

CLARK COUNTY DEPARTMENT OF DEVELOPMENT SERVICES  
ACCEPTANCE OF PLANS FOR FILING

BY \_\_\_\_\_  
ACCEPTANCE OF THESE PLANS FOR FILING SHALL NOT BE CONSTRUED TO BE A PERMIT FOR OR AN APPROVAL OF ANY VIOLATION OF ANY OF THE PROVISIONS OF THE STATE OR COUNTY LAWS AND/OR SPECIFICATIONS CLARK COUNTY SHALL BE HELD FREE FROM DAMAGES WHICH MAY RESULT FROM THE CONSTRUCTION OF THE IMPROVEMENTS FROM THE ENGINEERING DESIGN DEPICTED HEREON.

NOTE: POWER POLES AND/OR OTHER EXISTING FACILITIES NOT IN PROPER LOCATION BASED ON PROPOSED IMPROVEMENTS SHOWN HEREON WILL BE RELOCATED AT NO EXPENSE TO CLARK COUNTY



**CENTERLINE CURVE TABLE**

CURVE	LENGTH	RADIUS	DELTA	TANGENT
C235	148.01	2000.00	41°4'24"	74.04

**BACK OF CURB CURVE TABLE**

CURVE	LENGTH	RADIUS	DELTA	TANGENT
C150	149.38	2018.50	41°4'24"	74.72
C151	146.64	1981.50	41°4'24"	73.35
C152	17.62	20.00	50°28'44"	9.43
C153	198.60	40.50	280°57'27"	33.41
C154	17.62	20.00	50°28'44"	9.43



**SLATER HANIFAN GROUP**  
CONSULTING ENGINEERS & PLANNERS

5740 S. ARVILLE STREET #216, LAS VEGAS, NV 89118  
PHONE (702) 284-5300 FAX (702) 284-5399

NO.	DESCRIPTION	DATE	BY	APP.
1	REMOVED ARBY SPRINGS CT. ADDED UNIVERSITY RIDGE CT WITH NEW LOT LAYOUT AND REISED KEY MAP	04/10/06	DSP	[Signature]

CLARK COUNTY, NEVADA

SECTION 18  
TOWNSHIP 19 SOUTH  
RANGE 60 EAST, M.D.M.

PINNACLE HOMES

SABLE CREEK  
UNIVERSITY RIDGE AVE STA 9+00 TO 16+00  
PLAN AND PROFILE

DATE: 07/07/05  
DRAFTER: DMB  
DESIGNER: DMB  
CHECKED: JTS  
PROJECT NO.  
PIN0402-001

PROFESSIONAL ENGINEER - STATE OF NEVADA

JOHN J. STEADHAM  
Exp. 04/30/2008  
No. 15293

**PP-3**  
SHEET 16 OF 47

CLV DWG # 3074930  
CC H1E # 05-7995