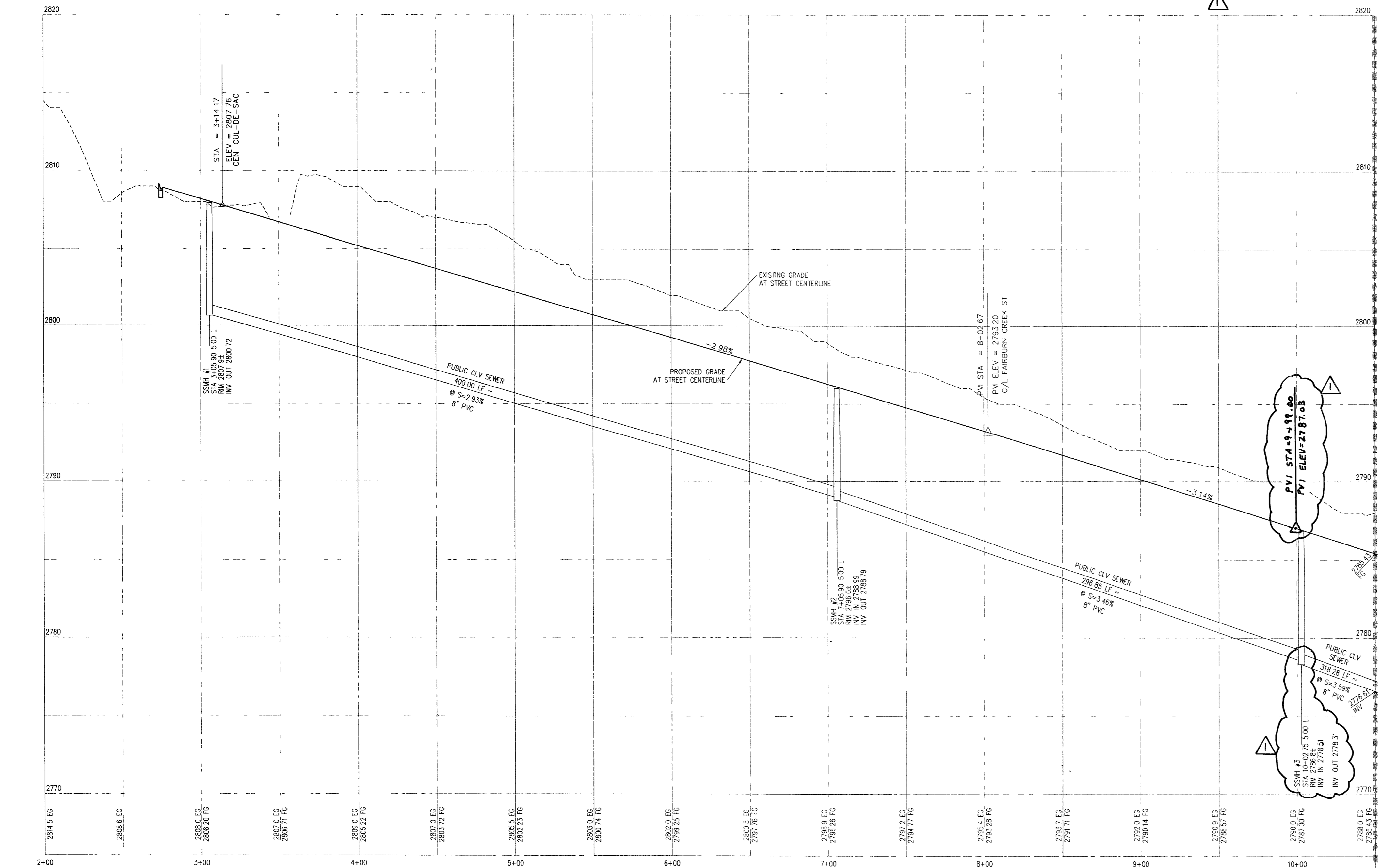
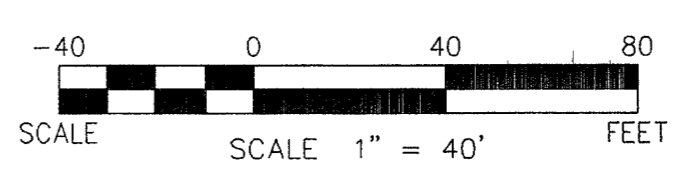


S-I-G GROUP
 SLATER HANIFAN GROUP
 CONSULTING ENGINEERS & PLANNERS
 5740 S. ARVILLE STREET #216, LAS VEGAS, NV 89118
 PHONE (702) 284-5300 FAX (702) 284-5389



RAMON VALLEY AVE
 SEE SHEET PP-2 STA 10+50.00

RAMON VALLEY AVE
 SEE SHEET PP-1 STA. 10+50.00



CONSTRUCTION NOTES

1. CONSTRUCT 8" WIDE CROSS GUTTER PER DETAIL CCAUSD #228 (SEE DETAIL ON SHEET D-2)
2. CONSTRUCT 4" WIDE BY 4" THICK SIDEWALK PER CCAUSD #234
3. CONSTRUCT SIDEWALK RAMP USING ARMOR TILE TRUNCATED DOMES OR EQUIVALENT PER CCAUSD #235, CASE 1
4. CONSTRUCT ROLL CURB PER DETAIL CCAUSD #217A
5. CONSTRUCT "L" TYPE CURB PER CCAUSD #216
6. CONSTRUCT 2" AC ON 4" TYPE II A B ON 6" TYPE I OR NATIVE, SEE SECTION "C", SHEET D-1
7. SAWCUT, REMOVE AND REPLACE EXISTING PAVEMENT PER PROP. STREET SECTION
8. CONSTRUCT 10' TRANSITION FROM ROLL CURB TO "L" CURB SEE DETAIL "X", SHEET D-2
9. CONSTRUCT 5" WIDE BY 4" THICK SIDEWALK PER CCAUSD #234
10. CONTRACTOR TO VERIFY ELEV. OF EXIST. CURB AND GUTTER, P.V.M.T., STORM DRAIN, RETAINING WALL ELEVATIONS, AND SDWK. PRIOR TO CONST. NOTIFY ENGINEER OF ANY CONFLICTS
14. CONST. SIDEWALK UNDERDRAIN PER CCAUSD NO. 236
15. CONST. "A" TYPE MEDIAN CURB PER CCAUSD #219
16. CONST. DEPRESSED CURB PER CCAUSD #227
17. CONST. BLOCK WALL OPENING PER SECTION "C", SHEET D-4
18. CONST. 4" AC ON 4" TYPE II A B ON 9" TYPE I, SEE SECTION "A", SHEET D-1
19. CONST. 4" AC ON 4" TYPE II A B ON 9" TYPE I, SEE SECTION "C", SHEET D-3
20. CONST. 4" AC ON 4" TYPE II A B ON 9" TYPE I, SEE SECTION "E", SHEET D-1
21. CONST. 3" AC ON 9" TYPE II A B, SEE SECTION "B", SHEET D-1
22. CONST. 3" AC ON 9" TYPE II A B, SEE SECTION "B", SHEET D-3
23. CONSTRUCT CONC. CUTOFF WALL PER SECTION "C", SHEET D-3
24. CONCRETE ENCASMENT PER UDACS SEC. 2.19
25. CONST. BLOCK WALL OPENING PER DETAIL "D" ON SHT. D-6

BACK OF CURB CURVE TABLE

CURVE	LENGTH	RADIUS	DELTA	TANGENT
C142	31.42	20.00	90°00'52"	20.01
C155	17.26	19.50	50°42'12"	9.24
C156	19.91	40.50	28°12'23"	33.15
C157	17.26	19.50	50°42'12"	9.24
C158	31.41	20.00	89°59'08"	19.99

EASEMENT NOTES

1. 37' DRAINAGE EASEMENT, LYING WATER EASEMENT, PUBLIC UTILITY EASEMENT (TO BE MAINTAINED BY H.O.A.) AND CLV PUBLIC SEWER EASEMENT
2. 20' DRAINAGE EASEMENT (TO BE MAINTAINED BY H.O.A.) AND CLV PUBLIC SEWER EASEMENT
3. DRAINAGE EASEMENT TO BE PRIVATELY MAINTAINED BY H.O.A. (SEE DIMENSION ON PLAN FOR EASEMENT WIDTH)



PROFILE
 HOR · 1" = 40'
 VERT · 1" = 4'

BENCHMARK
 BENCHMARK FOUND CITY OF LAS VEGAS RIVET AND ROUND PLATE IN CONCRETE CYLINDER, SOUTHEAST CORNER OF ELKHORN RD AND CONQUISTADOR ST
 BM NO 66 STATION 8LV90 19NNW6 ELEVATION = 2803.77 (NAVD 88)

BASIS OF BEARING
 THE BASIS OF BEARINGS FOR THIS SURVEY IS BASED ON THE FOUND AND HELD MONUMENTS MARKING THE SOUTHERLY LINE OF THE SOUTHWEST QUARTER (SW1/4) OF THE SOUTHWEST QUARTER (SE1/4) OF SECTION 13, T19S, R6E, MDM, CLARK COUNTY, NEVADA PER RECORD OF SURVEY BOOK 123, PAGE 32, CLARK COUNTY RECORDER'S OFFICE AS SOUTH 88°46'46" EAST

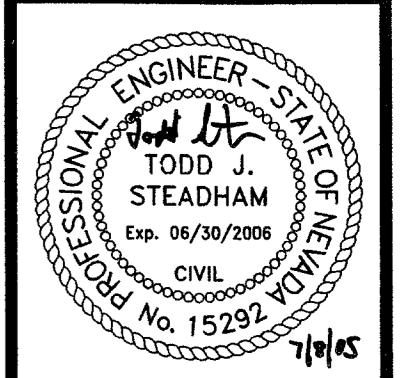
CLARK COUNTY DEPARTMENT OF DEVELOPMENT SERVICES
 ACCEPTANCE OF PLANS FOR FILING

BY: TODD J. STEADHAM
 CIVIL ENGINEER
 No. 15297
 Exp. 06/18/2008

ACCEPTANCE OF THESE PLANS FOR FILING SHALL NOT BE CONSTRUED TO BE A PERMIT FOR OR AN APPROVAL OF ANY VIOLATION OF ANY OF THE PROVISIONS OF THE STATE OR COUNTY LAWS AND/OR SPECIFICATIONS CLARK COUNTY SHALL BE HELD FREE FROM DAMAGES WHICH MAY RESULT FROM THE CONSTRUCTION OF THE IMPROVEMENTS FROM THE ENGINEERING DESIGN DEPICTED HEREIN

NOTE: POWER POLES AND/OR OTHER EXISTING FACILITIES NOT IN PROPER LOCATION BASED ON PROPOSED IMPROVEMENTS SHOWN HEREON WILL BE RELOCATED AT NO EXPENSE TO CLARK COUNTY

DATE: 07/07/05
 DRAFTER: DMB
 DESIGNER: DMB
 CHECKED: JTS
 PROJECT NO.: PIN0402-001



PP-1
 SHEET 14 OF 44
 CLV DWG #307V930
 CC HTE# 05-7995



File: J:\PIN0402-500\Drawings\PP-1\PP-1.dwg, Jul 08, 2005 - 09:25
 User: jmcneaney

81741 Plan 92117