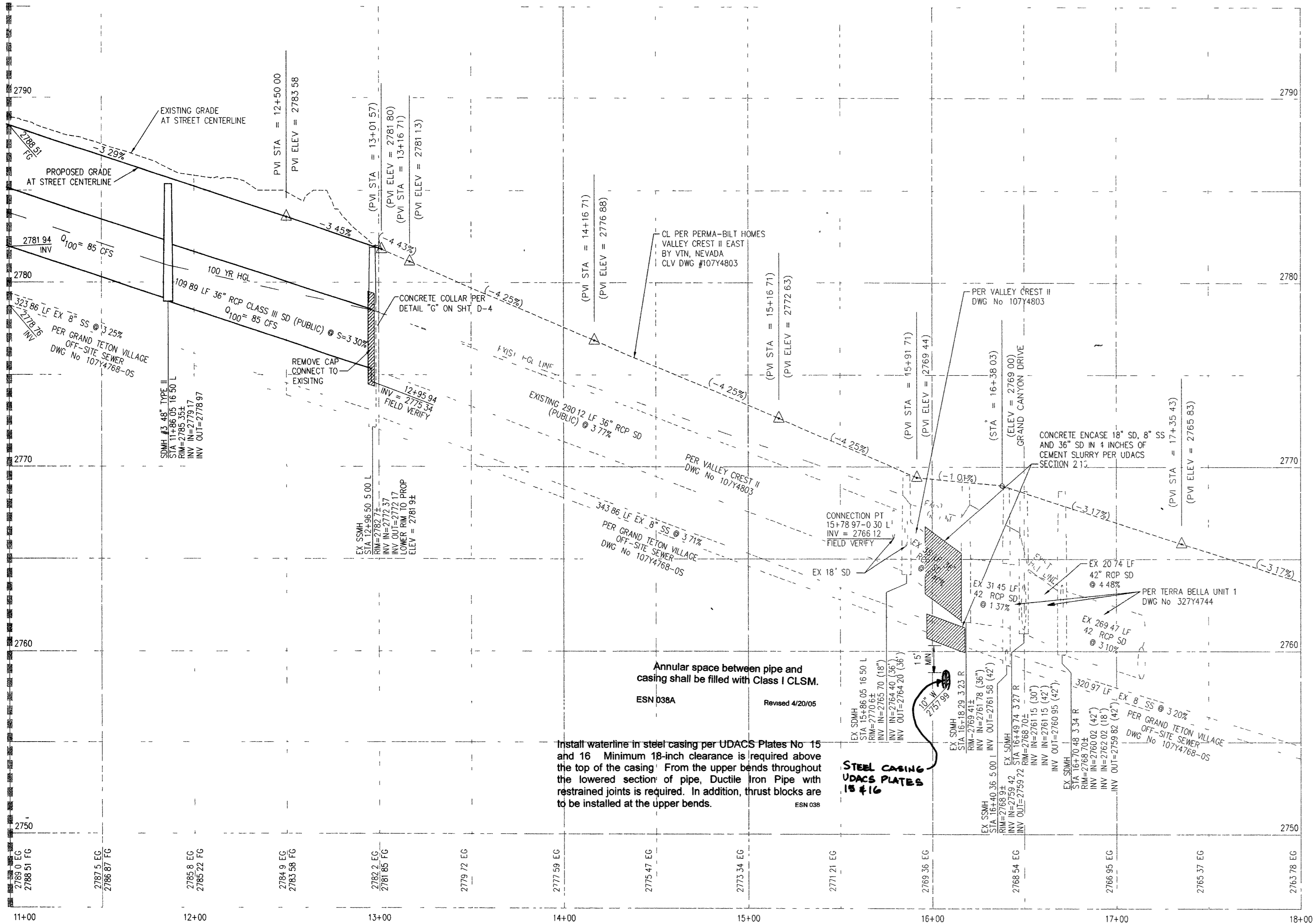
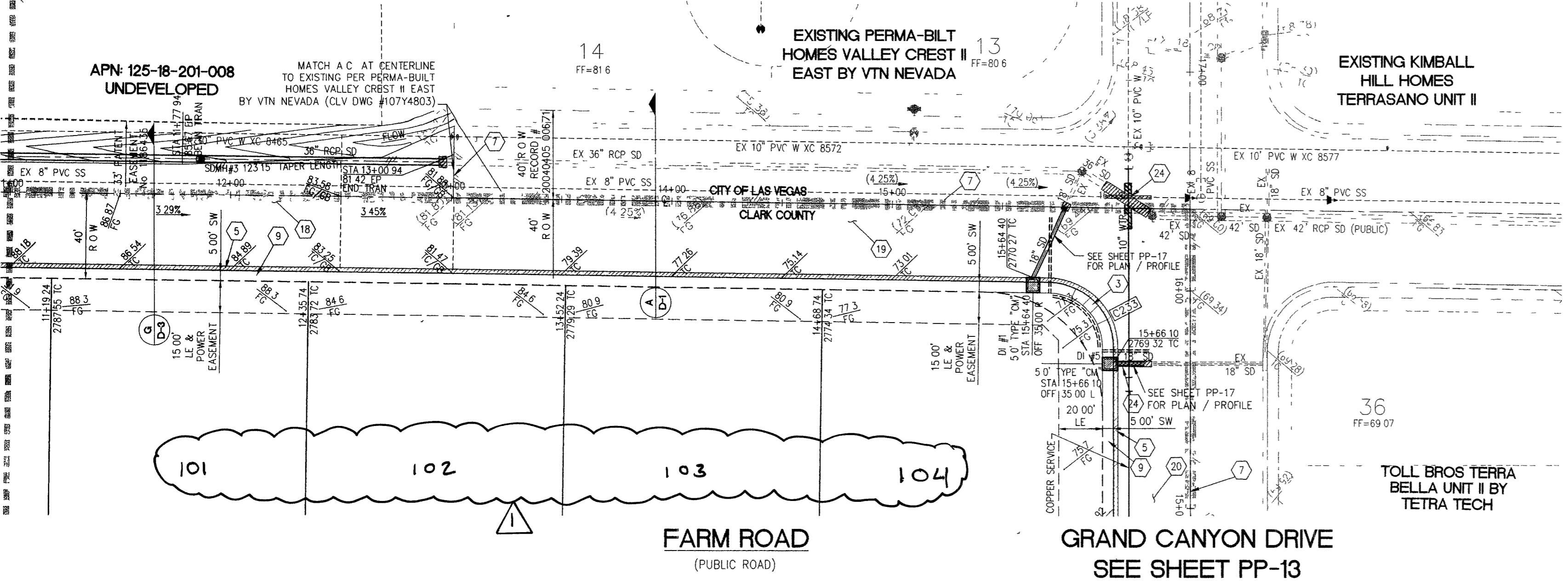


FARM ROAD SEE SHEET PP-10  
STA 11+00.00

FARM ROAD SEE SHEET PP-10  
STA 11+00.00

FARM ROAD SEE SHEET PP-10  
STA 11+00.00



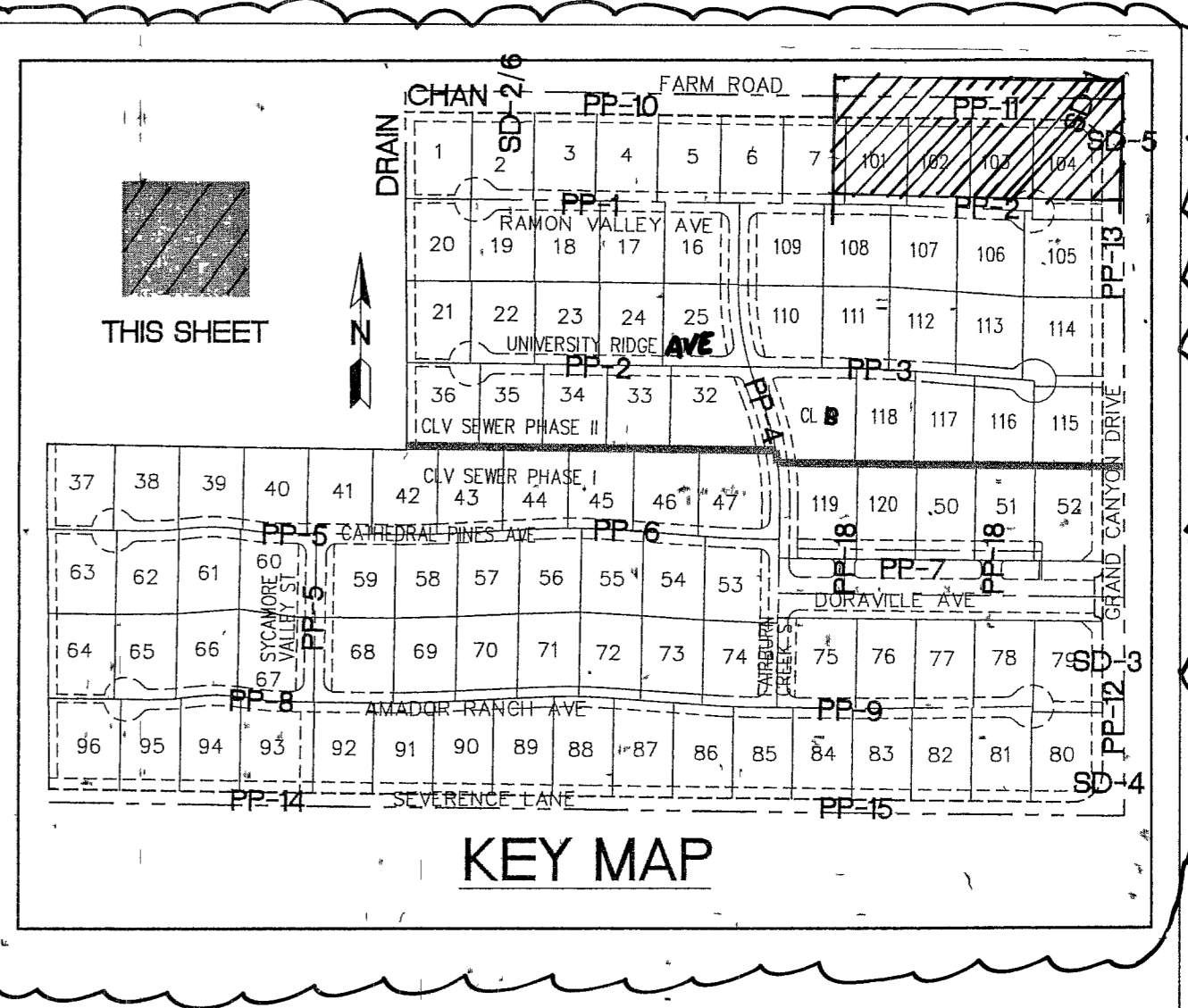
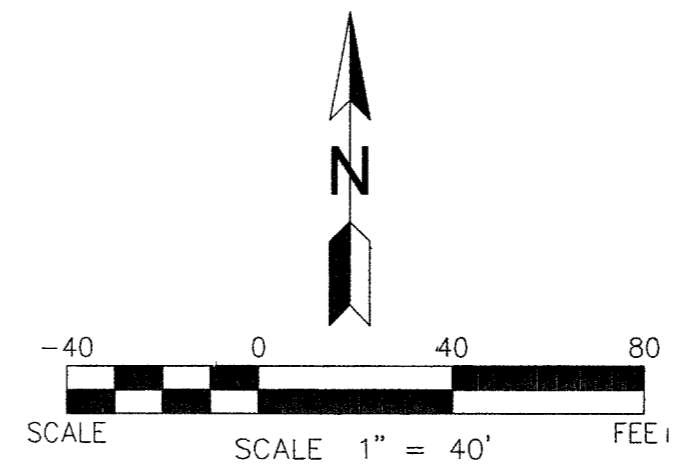
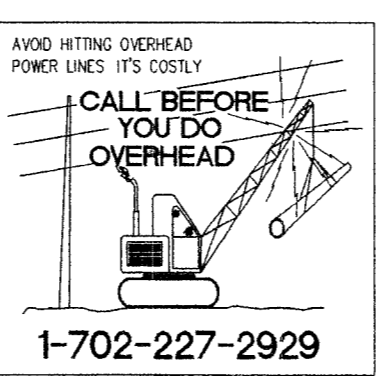
**PROFILE**

HOR : 1"=40'  
VERT : 1"=4'

BACK OF CURB CURVE TABLE			
CURVE	LENGTH	RADIUS	DELTA
C233	46.67	30.00	89°07'52"
			29.55

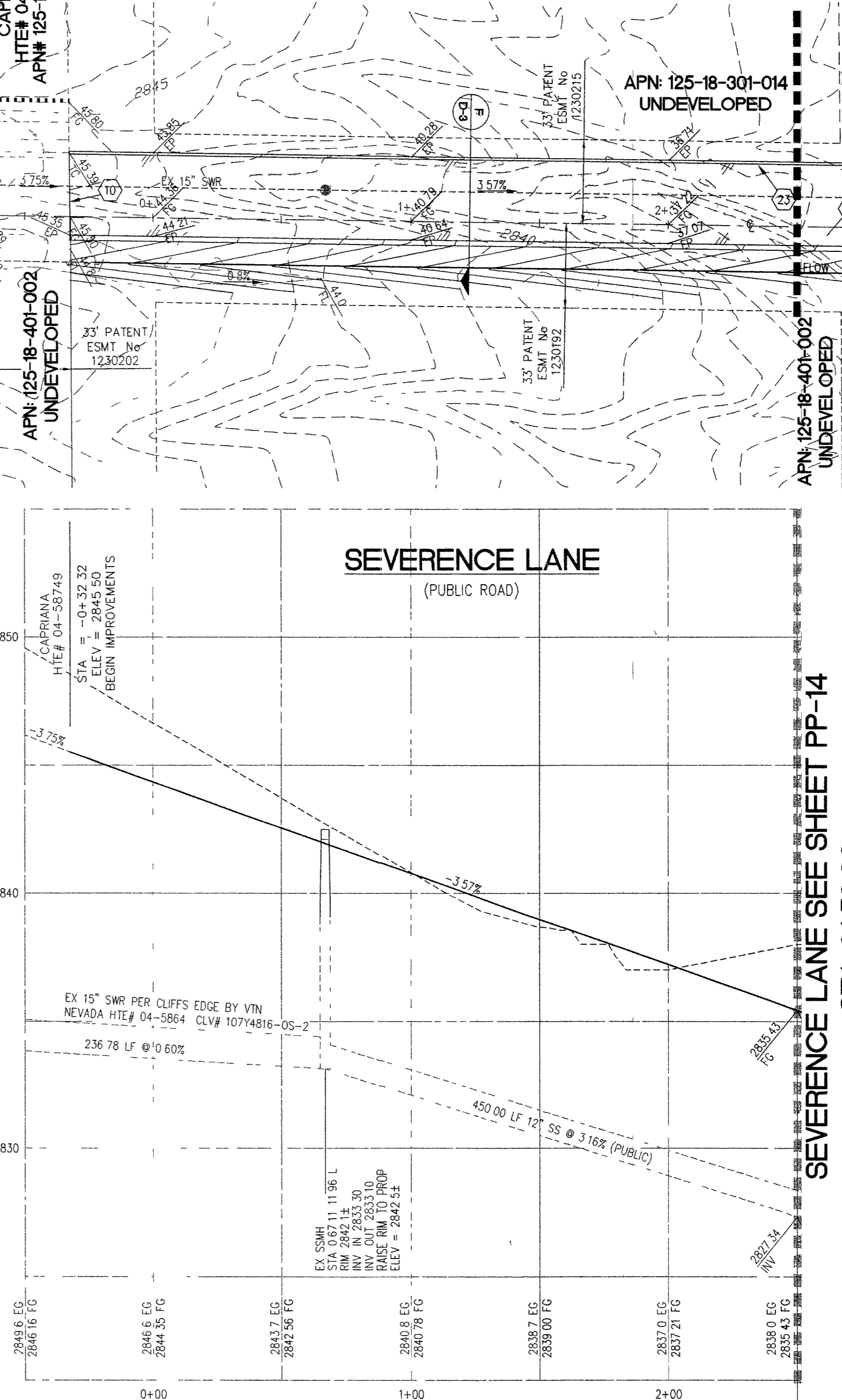
**EASEMENT NOTES**

- 37" DRAINAGE EASEMENT, LVWMO WATER EASEMENT, PUBLIC UTILITY EASEMENT (TO BE MAINTAINED BY H.O.A.) AND CLV PUBLIC SEWER EASEMENT
- 20" DRAINAGE EASEMENT (TO BE MAINTAINED BY H.O.A.) AND CLV PUBLIC SEWER EASEMENT
- DRAINAGE EASEMENT TO BE PRIVATELY MAINTAINED BY H.O.A. (SEE DIMENSION ON PLAN FOR EASEMENT WIDTH)



CAPRIANA HTE# 04-58749  
APN# 125-18-401-002

CAPRIANA HTE# 04-58749  
APN# 125-18-401-002



**CONSTRUCTION NOTES**

- CONSTRUCT 8" WIDE CROSS GUTTER PER DETAIL CCAUSD #228 (SEE DETAIL ON SHEET D-2)
- CONSTRUCT 4" WIDE BY 4" THICK SIDEWALK PER CCAUSD #234
- CONSTRUCT SIDEWALK RAMPS USING ARMOR TILE TRUNCATED DOMES OR EQUIVALENT PER CCAUSD #235, CASE 1
- CONSTRUCT ROLL CURB PER DETAIL CCAUSD #217A
- CONSTRUCT "L" TYPE CURB PER CCAUSD #216
- CONSTRUCT 2" AC ON 4" TYPE II A/B ON 6" TYPE I OR NATIVE, SEE SECTION "C", SHEET D-1
- SAW-CUT, REMOVE AND REPLACE EXISTING PAVEMENT PER PROP STREET SECTION
- CONSTRUCT 10" TRANSITION FROM ROLL CURB TO "L" CURB SEE DETAIL "X", SHEET D-2
- CONSTRUCT 5" WIDE BY 4" THICK SIDEWALK PER CCAUSD #234
- CONTRACTOR TO VERIFY ELEV. OF EXIST CURB AND GUTTER, P.M.T., STORM DRAIN, RETAINING WALL ELEVATIONS, AND SLOPE PRIOR TO CONST. NOTIFY ENGINEER OF ANY CONFLICTS.
- CONST SIDEWALK UNDERDRAIN PER CCAUSD NO 236
- CONST "A" TYPE MEDIAN CURB PER CCAUSD #219
- CONST DEPRESSED CURB PER CCAUSD #227
- CONST BLOCK WALL OPENING PER SECTION "C", SHEET D-4
- CONST 4" AC ON 4" TYPE II A/B ON 9" TYPE I, SEE SECTION "A", SHEET D-1
- CONST 4" AC ON 4" TYPE II A/B ON 9" TYPE I, SEE SECTION "G", SHEET D-3
- CONST 4" AC ON 4" TYPE II A/B ON 9" TYPE I, SEE SECTION "E", SHEET D-1
- CONST 3" AC ON 9" TYPE II A/B, SEE SECTION "B", SHEET D-1
- CONST 3" AC ON 9" TYPE II A/B, SEE SECTION "B", SHEET D-3
- CONSTRUCT CONC CUTOFF WALL PER SECTION "C", SHEET D-3
- CONCRETE ENCASUREMENT PER UDACS SEC 219
- CONST BLOCK WALL OPENING PER DETAIL "D" ON SHT D-6

**BENCHMARK**

BENCHMARK FOUND CITY OF LAS VEGAS RIVET AND ROUND PLATE IN CONCRETE CYLINDER, SOUTHEAST CORNER OF ELKHORN RD AND CONSUSTADOR ST  
BM NO 66 STATION BLV90 19NNW6 ELEVATION = 2803.77 (NAVD 88)

**BASIS OF BEARING**

THE BASIS OF BEARINGS FOR THIS SURVEY IS BASED ON THE FOUND AND HELD MONUMENTS MARKING THE SOUTHERLY LINE OF THE SOUTHWEST QUARTER (SW1/4) OF THE SOUTHEAST QUARTER (SE1/4) OF SECTION 13, T19S, R36E, M3M, CLARK COUNTY, NEVADA PER RECORD OF SURVEY BOOK 123, PAGE 32, CLARK COUNTY RECORDER'S OFFICE AS SOUTH 88°46'46" EAST

**PROFILE**

HOR : 1"=40'  
VERT : 1"=4'

APPROVED FOR CONSTRUCTION

ASST. DISTRICT ENGINEER  
LAS VEGAS VALLEY WATER DISTRICT  
PROJECT # H10887  
DATE 7-11-05

CLARK COUNTY DEPARTMENT OF DEVELOPMENT SERVICES  
ACCEPTANCE OF PLANS FOR FILING

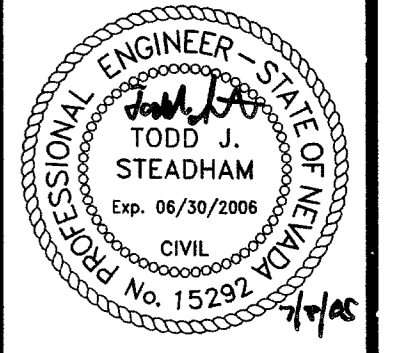
BY \_\_\_\_\_  
ACCEPTANCE OF THESE PLANS FOR FILING SHALL NOT BE CONSTRUED TO BE A PERMIT FOR OR AN APPROVAL OF ANY VIOLATION OF ANY OF THE PROVISIONS OF THE STATE OR COUNTY LAWS AND/OR SPECIFICATIONS CLARK COUNTY SHALL BE HELD FREE FROM DAMAGES WHICH MAY RESULT FROM THE CONSTRUCTION OF THE IMPROVEMENTS FROM THE ENGINEERING DESIGN DEPICTED HEREIN  
NOTE POWER POLES AND/OR OTHER EXISTING FACILITIES NOT IN PROPER LOCATION BASED ON PROPOSED IMPROVEMENTS SHOWN HEREON WILL BE RELOCATED AT NO EXPENSE TO CLARK COUNTY

**SLATER HANIFAN GROUP**  
CONSULTING ENGINEERS & PLANNERS  
5740 S. ARVILLE STREET #216, LAS VEGAS, NV 89118  
PHONE (702) 284-5300

NO.	DESCRIPTION	DATE	BY
1	REVISED LOT NUMBERS AND FEET MAP	11/17/06	ASST

CLARK COUNTY, NEVADA  
SECTION 18  
TOWNSHIP 19 SOUTH  
RANGE 60 EAST, M.D.M.  
**PINNACLE HOMES**  
**SABLE CREEK**  
FARM RD PLAN AND PROFILE STA 11+00 TO 18+00  
SEVERANCE LANE STA -0+50 TO 2+50

DATE 07/07/05  
DRAFTER: JNR  
DESIGNER: JNR  
CHECKED: TJS  
PROJECT NO. PIN0402-001



**PP-11**  
SHEET 24 OF 44  
CLV DWG # 3071930  
CC HTE# 05-7995

81751 Rsm 92.128