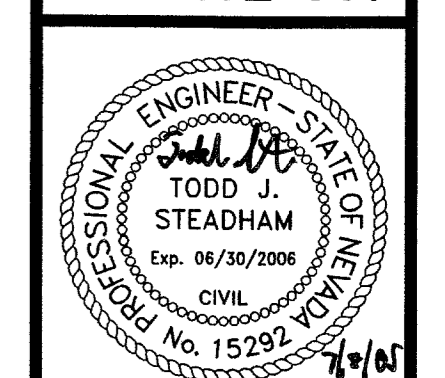


| NO. | DESCRIPTION | DATE | BY | APP |
|-----|--------------|---------|-----|-----|
| 1 | REVISED MAPP | 4/17/06 | JNR | |

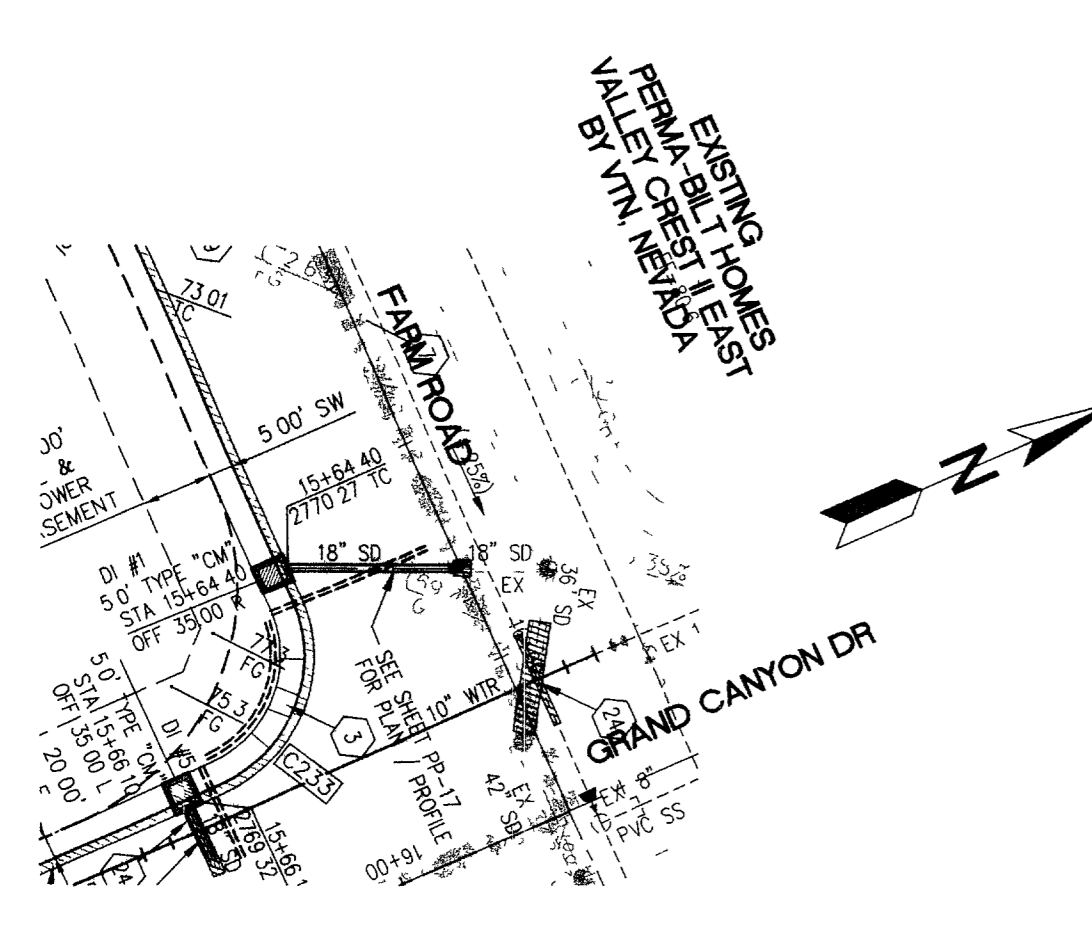
CLARK COUNTY, NEVADA
 PINNACLE HOMES
 SABLE CREEK
 STORM DRAIN LATERALS 1, 3, 4, 5 AND 2 + 6
 PLAN AND PROFILE

SECTION 18
 TOWNSHIP 8 SOUTH
 RANGE 60 EAST, MID.M.

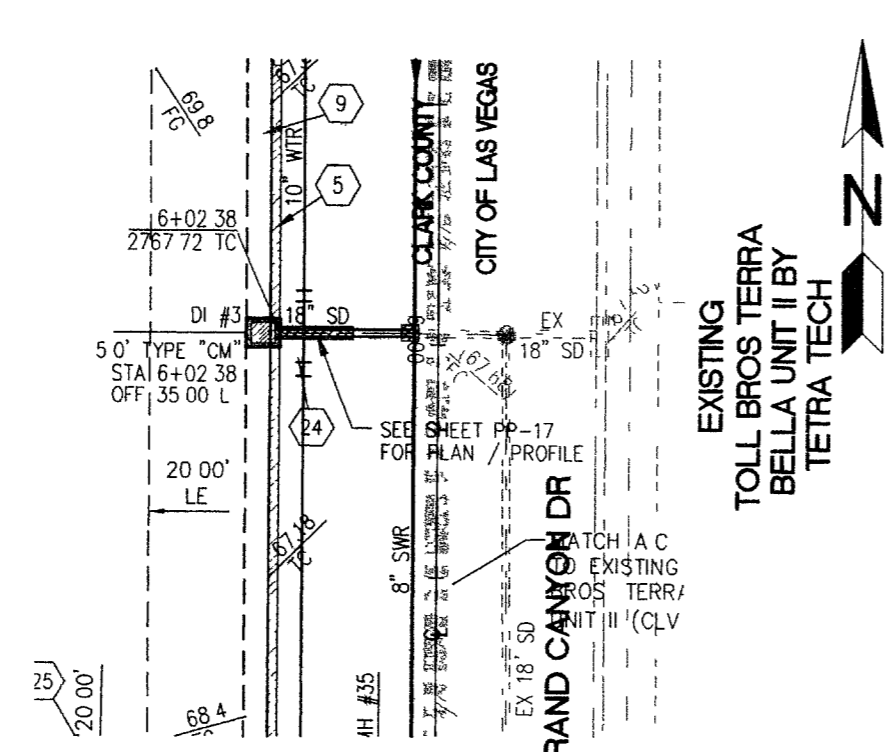
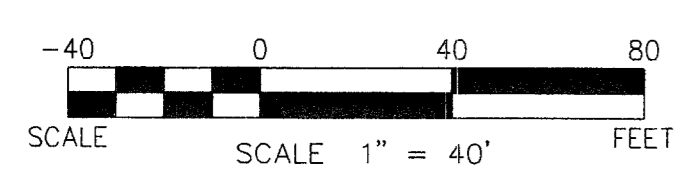
DATE: 07/07/05
 DRAFTER: JNR
 DESIGNER: JNR
 CHECKED: TJS
 PROJECT NO.
PIN0402-001



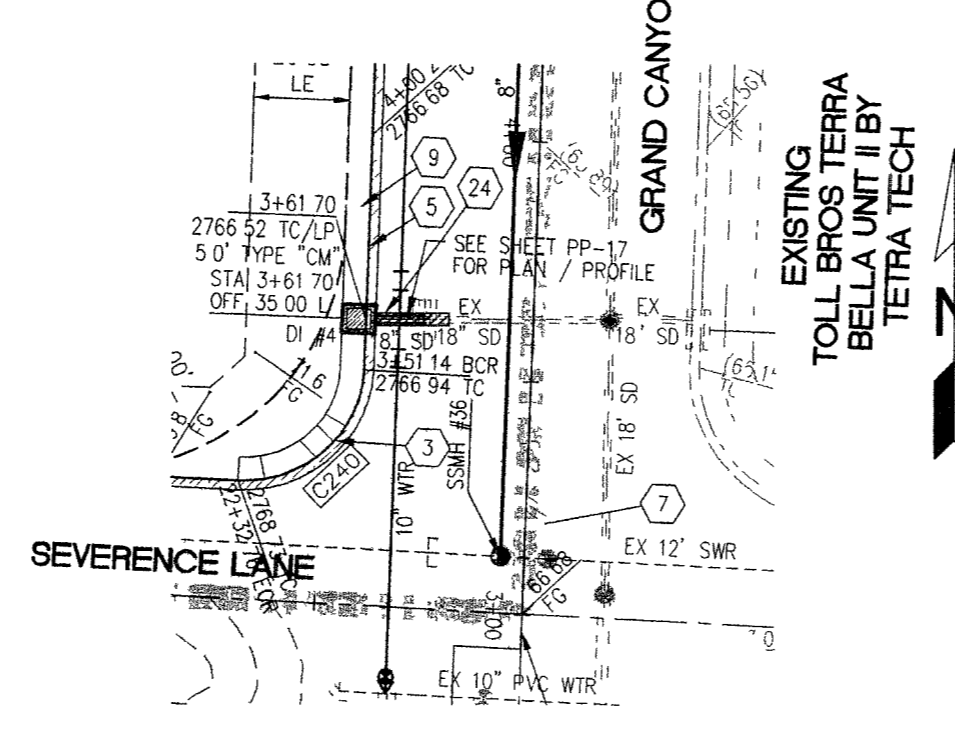
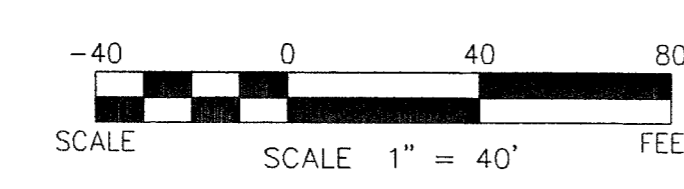
PP-17
 SHEET 30 OF 44
 CLV DWG #3017930
 CC HTE# 05-7995



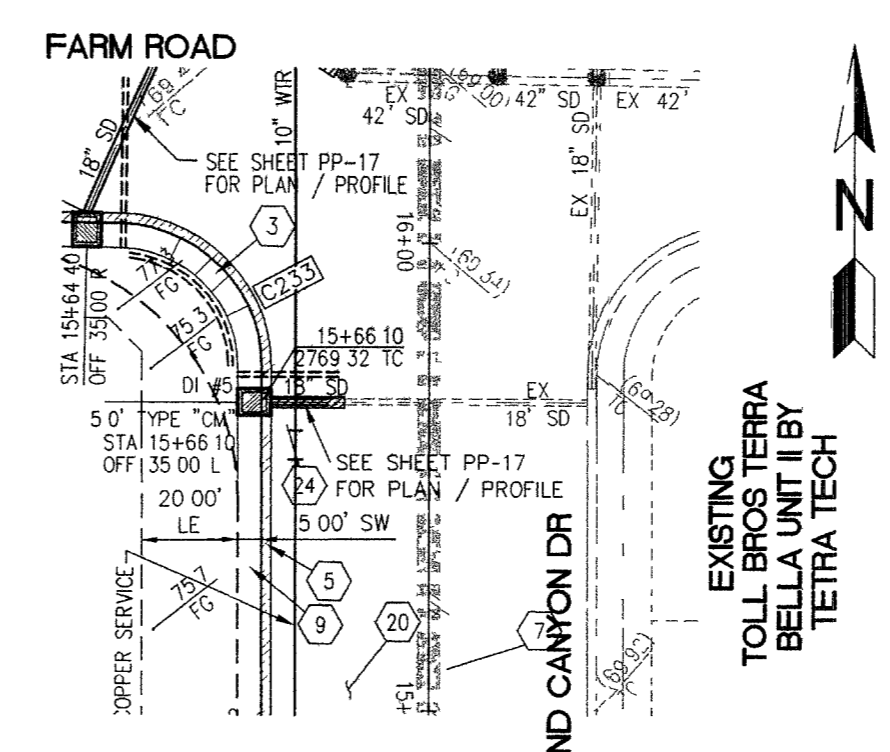
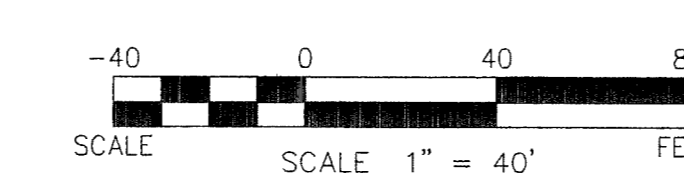
STORM DRAIN #1



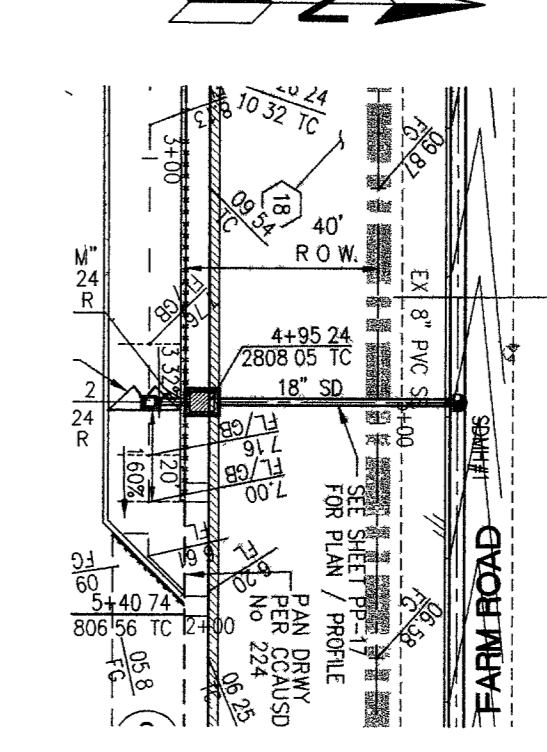
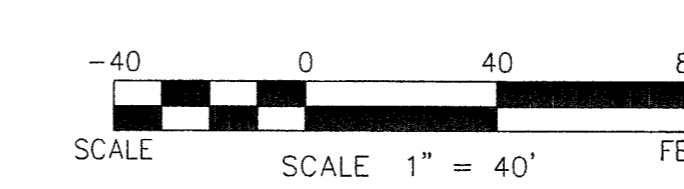
STORM DRAIN #3



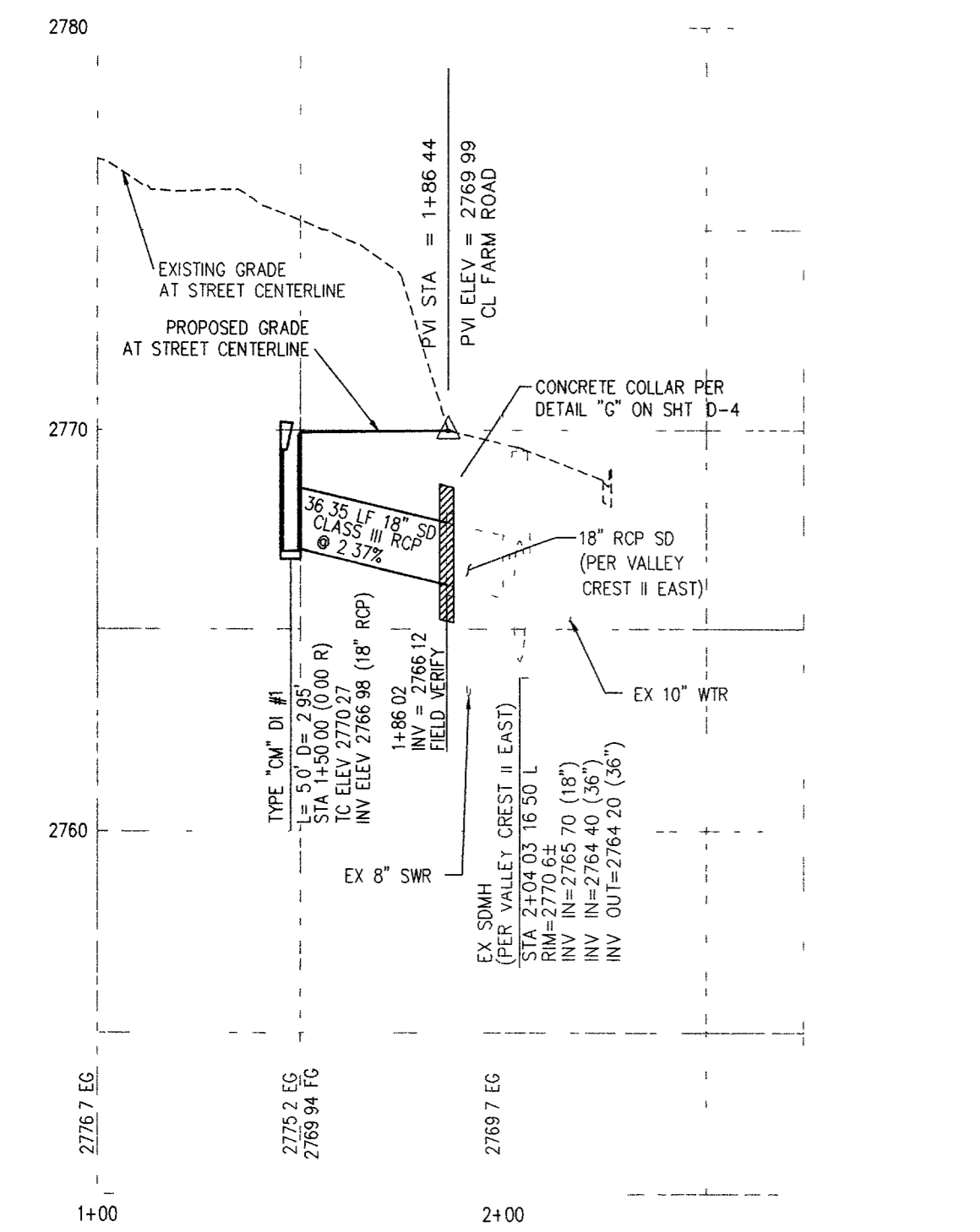
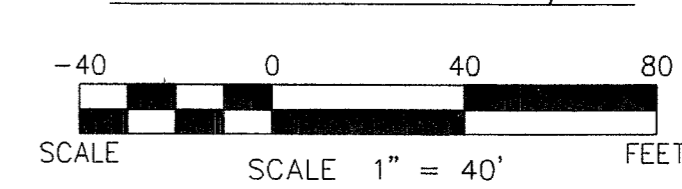
STORM DRAIN #4



STORM DRAIN #5

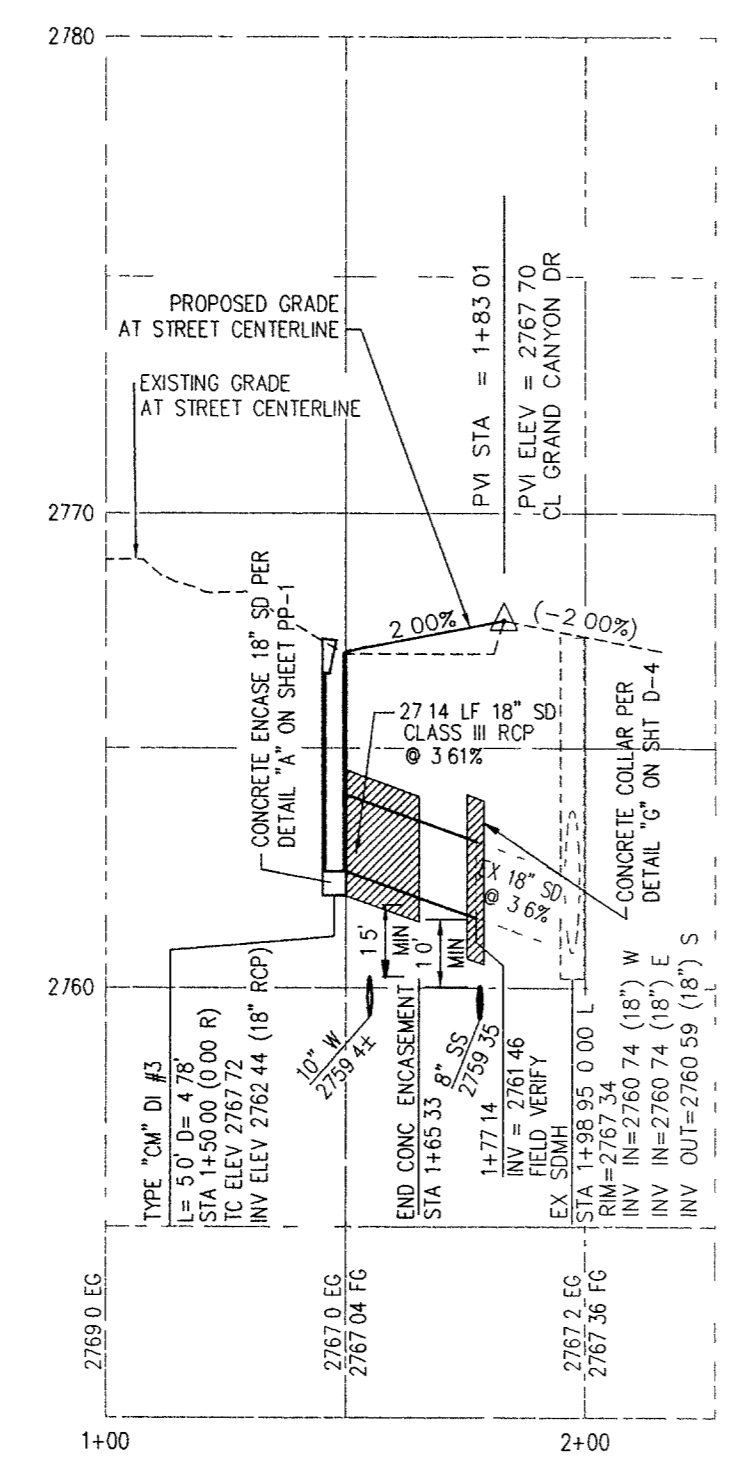


STORM DRAIN #2, #6



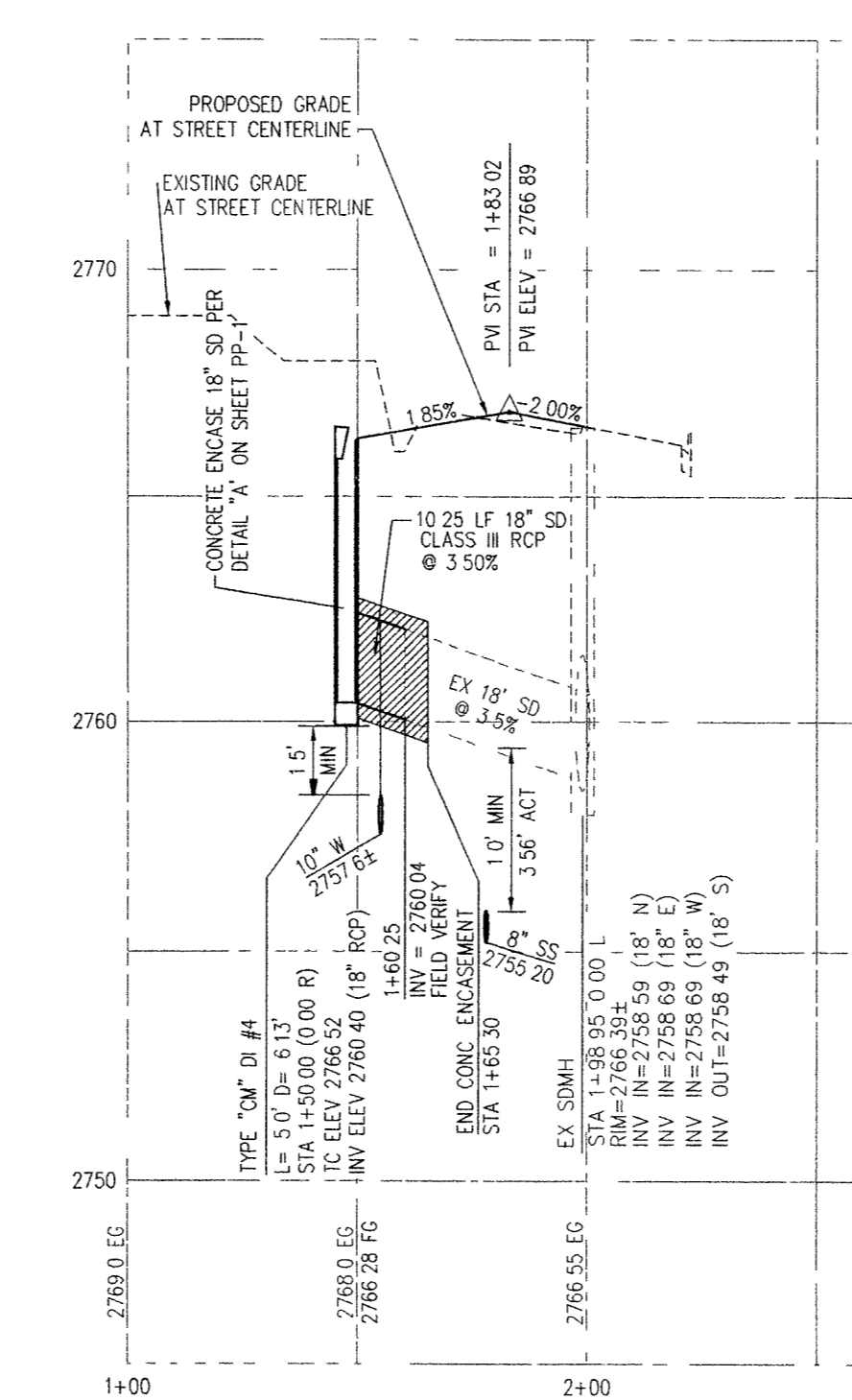
PROFILE

HOR 1"=40'
 VERT 1"=4'



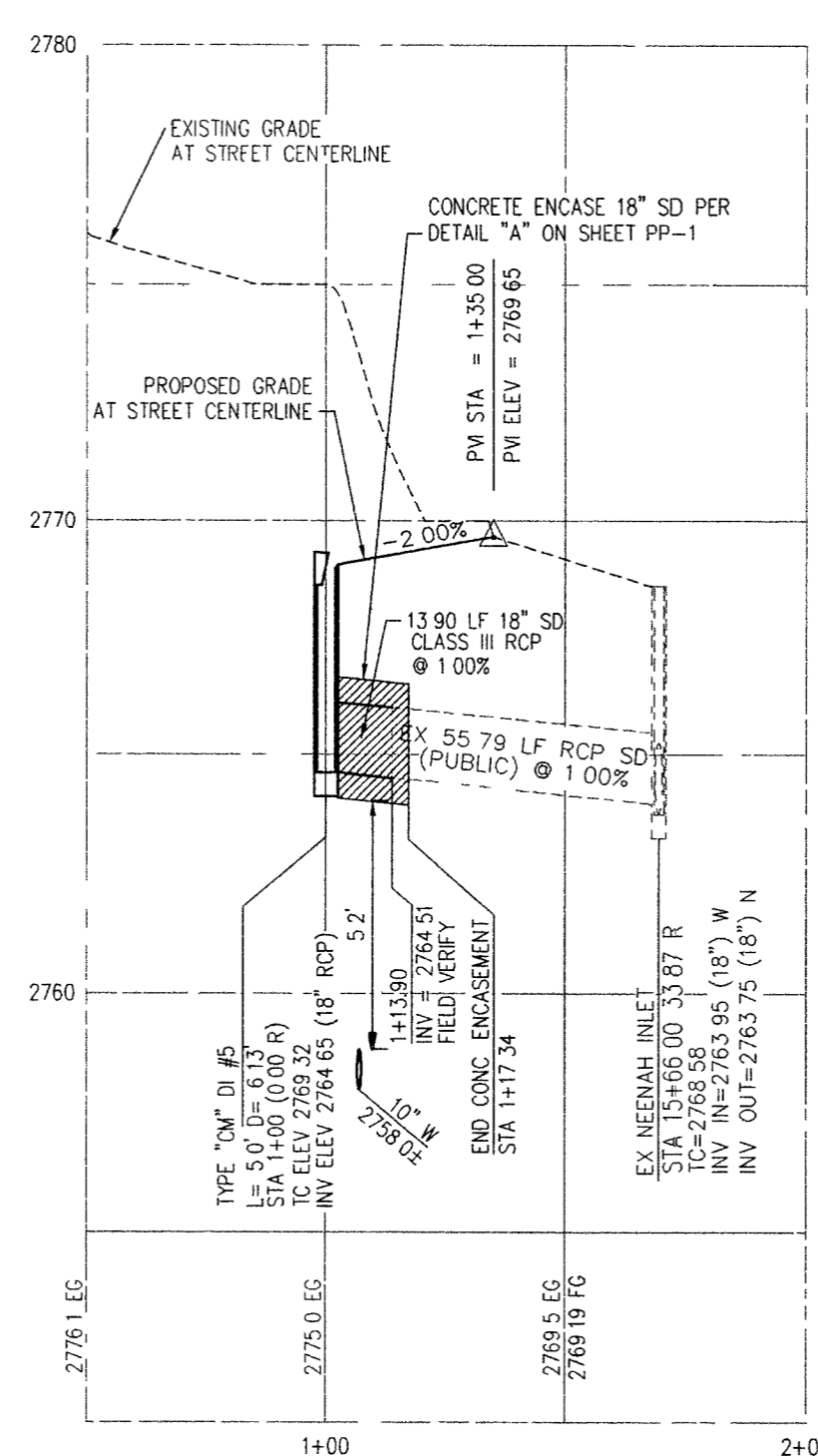
PROFILE

HOR 1"=40'
 VERT 1"=4'



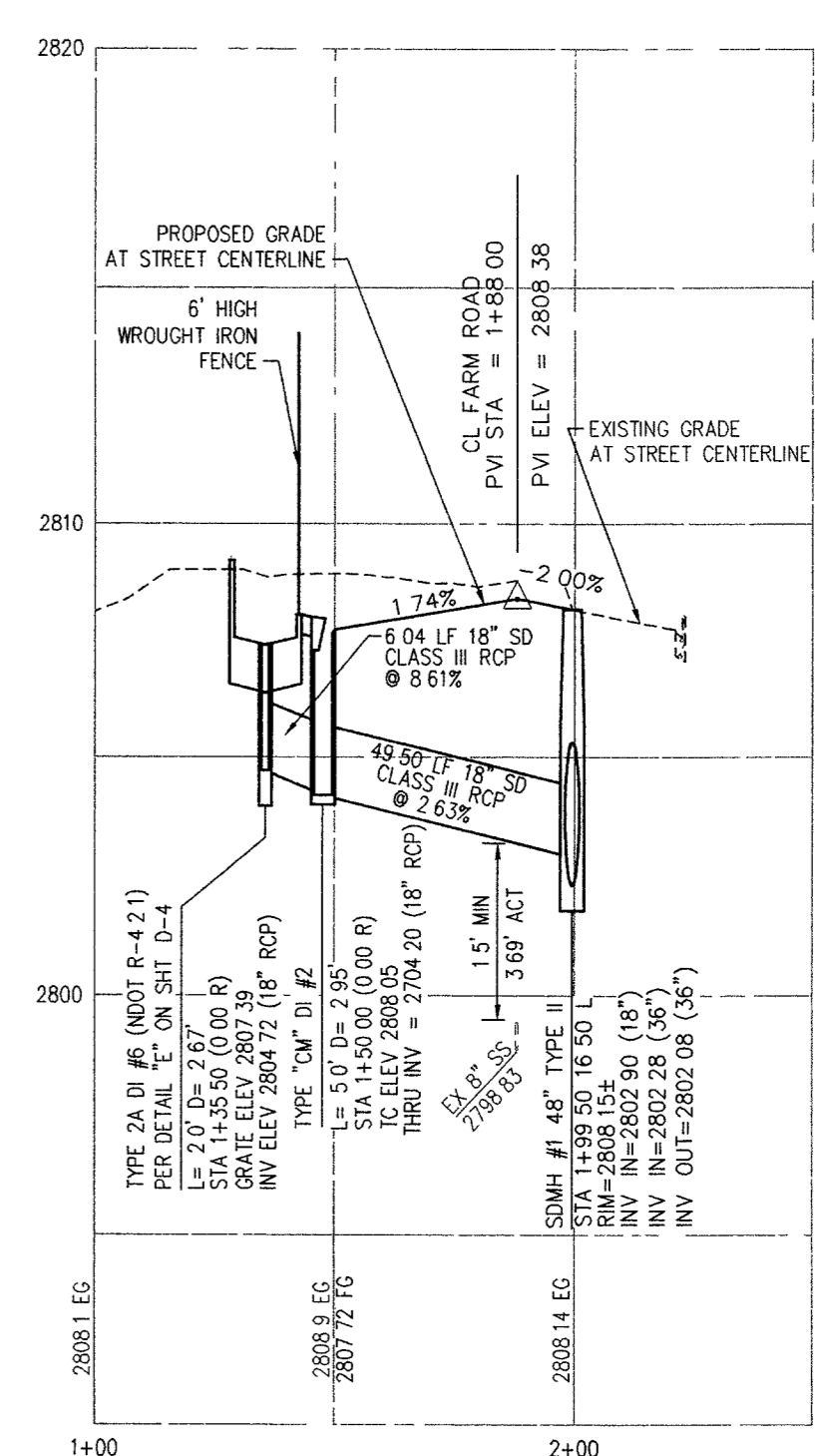
PROFILE

HOR 1"=40'
 VERT 1"=4'



PROFILE

HOR 1"=40'
 VERT 1"=4'



PROFILE

HOR 1"=40'
 VERT 1"=4'

APPROVED FOR CONSTRUCTION

 LAS VEGAS VALLEY WATER DISTRICT
 PROJECT# 1108887
 DATE 7-11-05

- CONSTRUCTION NOTES**
- CONSTRUCT 8" WIDE CROSS CUTTER PER DETAIL CCAUSD #228 (SEE DETAIL ON SHEET D-2)
 - CONSTRUCT 4" WIDE BY 4" THICK SIDEWALK PER CCAUSD #234
 - CONSTRUCT SIDEWALK RAMPS USING ARMOR TILE TRUNCATED DOMES OR EQUIVALENT PER CCAUSD #235, CASE 1
 - CONSTRUCT ROLL CURB PER DETAIL CCAUSD #217A
 - CONSTRUCT "L" TYPE CURB PER CCAUSD #216
 - CONSTRUCT 2" AC ON 4" TYPE II A/B ON 6" TYPE I OR NATIVE, SEE SECTION "C", SHEET D-1
 - SANITARY, REMOVE AND REPLACE EXISTING PAVEMENT PER PROP. STREET SECTION
 - CONSTRUCT 10" TRANSITION FROM ROLL CURB TO "L" CURB SEE DETAIL "X", SHEET D-2
 - CONSTRUCT 5" WIDE BY 4" THICK SIDEWALK PER CCAUSD #234
 - CONTRACTOR TO VERIFY ELEV. OF EXIST. CURB AND CUTTER, PAVT., STORM DRAIN, RETAINING WALL ELEVATIONS, AND SDWK. PRIOR TO CONST. NOTIFY ENGINEER OF ANY CONFLICTS
 - CONST. SIDEWALK UNDERDRAIN PER CCAUSD NO. 236
 - CONST. "A" TYPE MEDIAN CURB PER CCAUSD #219
 - CONST. DEPRESSED CURB PER CCAUSD #227
 - CONST. BLOCK WALL OPENING PER SECTION "C", SHEET D-4
 - CONST. 4" AC ON 4" TYPE II A/B ON 9" TYPE I, SEE SECTION "A", SHEET D-1
 - CONST. 4" AC ON 4" TYPE II A/B ON 9" TYPE I, SEE SECTION "G", SHEET D-3
 - CONST. 4" AC ON 4" TYPE II A/B ON 9" TYPE I, SEE SECTION "E", SHEET D-1
 - CONST. 3" AC ON 9" TYPE II A/B., SEE SECTION "B", SHEET D-1
 - CONST. 3" AC ON 9" TYPE II A/B., SEE SECTION "B", SHEET D-3
 - CONSTRUCT CONC. CUTOFF WALL PER SECTION "C", SHEET D-3
 - CONCRETE ENCASUREMENT PER UDACS SEC. 219
 - CONST. BLOCK WALL OPENING PER DETAIL "D" ON SHT. D-6

Call before you Dig.
 1-702-455-7511
 1-702-229-6611

Call before you Dig.
 1-800-227-2600
 UNDERGROUND SERVICE (USA)

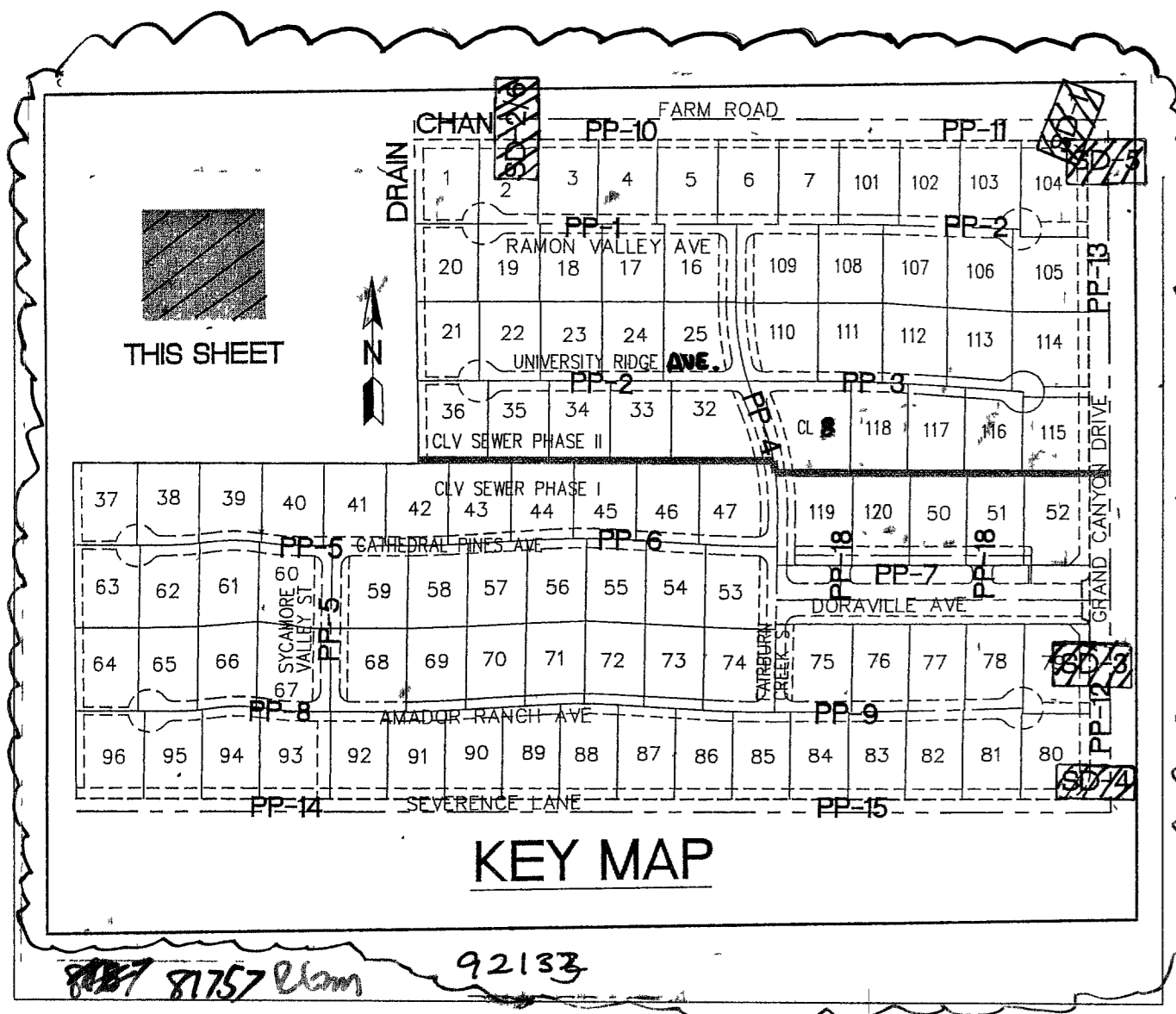
Call before you Dig.
 1-702-227-2929

- EASEMENT NOTES**
- 37' DRAINAGE EASEMENT, LVWD WATER EASEMENT, PUBLIC UTILITY EASEMENT (TO BE MAINTAINED BY H.O.A.) AND CLV PUBLIC SEWER EASEMENT
 - 20' DRAINAGE EASEMENT (TO BE MAINTAINED BY H.O.A.) AND CLV PUBLIC SEWER EASEMENT
 - DRAINAGE EASEMENT TO BE PRIVATELY MAINTAINED BY H.O.A. (SEE DIMENSION ON PLAN FOR EASEMENT WIDTH)

BENCHMARK
 BENCHMARK FOUND CITY OF LAS VEGAS RIVET AND ROUND PLATE IN CONCRETE CYLINDER, SOUTHEAST CORNER OF ELKHORN RD AND CONQUASTADOR ST
 BM NO. 66 STATION 8L.V.00 19NNW6 ELEVATION = 2803.77 (NAVD 88)

BASIS OF BEARING
 THE BASIS OF BEARINGS FOR THIS SURVEY IS BASED ON THE FOUND AND HELD MONUMENTS MARKING THE SOUTHERLY LINE OF THE SOUTHWEST QUARTER (SW1/4) OF THE SOUTHWEST QUARTER (SE1/4) OF SECTION 13, T8S, R6E, M2M, CLARK COUNTY, NEVADA PER RECORD OF SURVEY BOOK 123, PAGE 32, CLARK COUNTY RECORDER'S OFFICE AS SOUTH 88°46'46" EAST

CLARK COUNTY DEPARTMENT OF DEVELOPMENT SERVICES
 ACCEPTANCE OF PLANS FOR FILING
 BY:
 ACCEPTANCE OF THESE PLANS FOR FILING SHALL NOT BE CONSTRUED TO BE A PERMIT FOR OR AN APPROVAL OF ANY VIOLATION OF ANY OF THE PROVISIONS OF THE STATE OR COUNTY LAWS AND/OR SPECIFICATIONS CLARK COUNTY SHALL BE HELD FREE FROM DAMAGES WHICH MAY RESULT FROM THE CONSTRUCTION OF THE IMPROVEMENTS FROM THE ENGINEERING DESIGN DEPICTED HEREIN
 NOTE: POWER POLES AND/OR OTHER EXISTING FACILITIES NOT IN PROPER LOCATION BASED ON PROPOSED IMPROVEMENTS SHOWN HEREON WILL BE RELOCATED AT NO EXPENSE TO CLARK COUNTY



File: J:\P\0402-5001\Draw\Imp\0402-PLR.Dwg, Jul 07, 2005 - 15:10