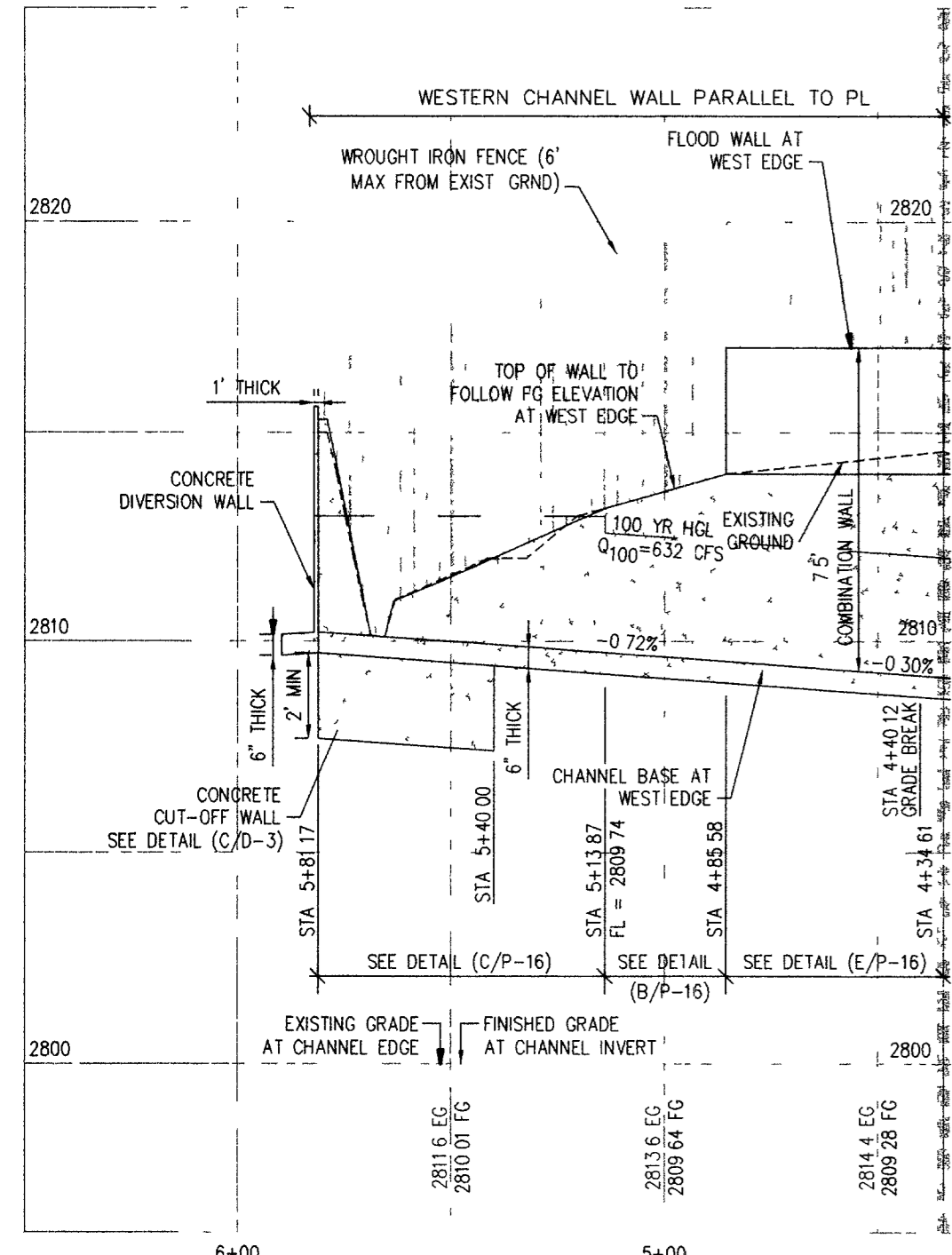
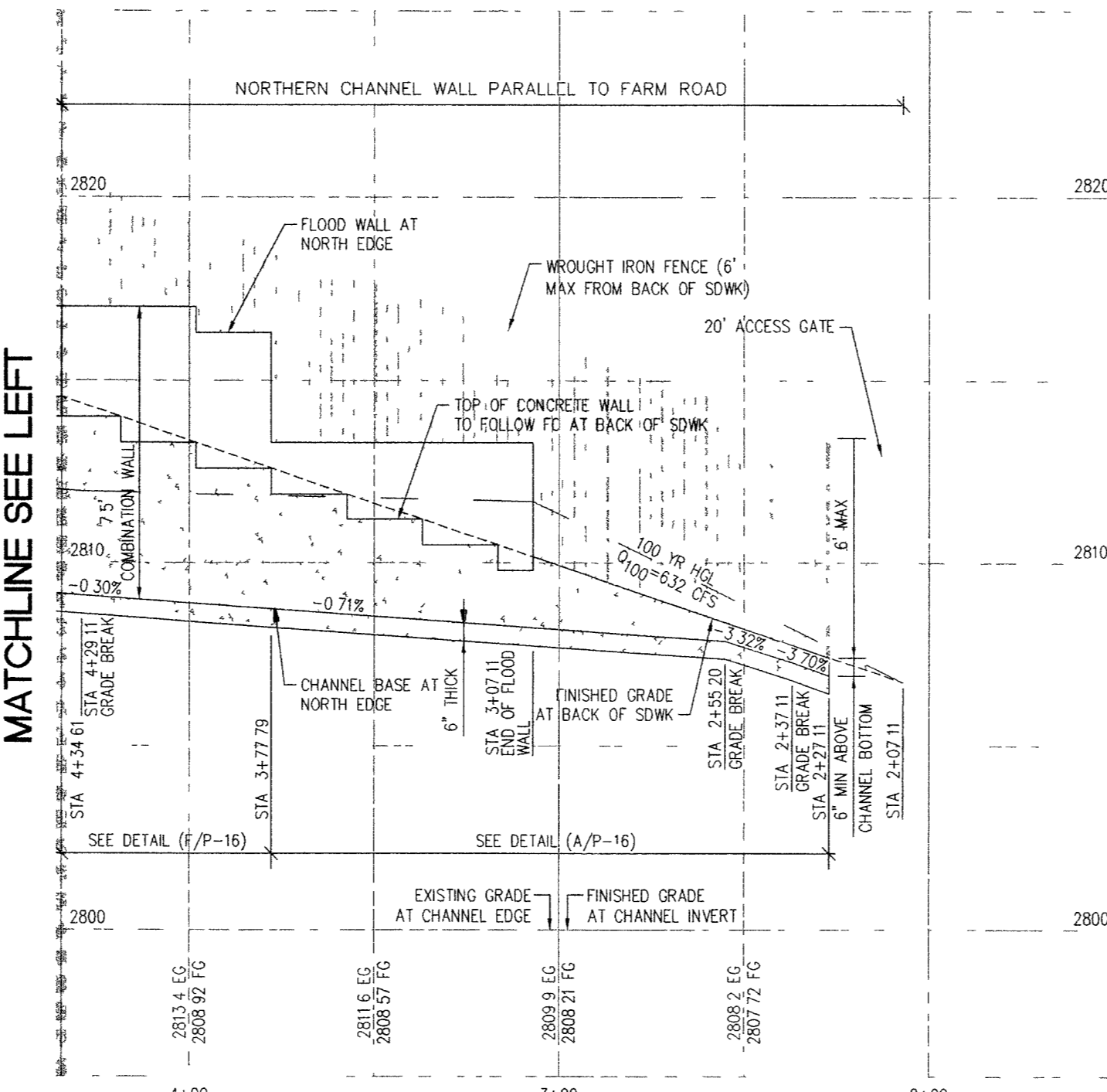


BENCHMARK
 BENCHMARK FOUND CITY OF LAS VEGAS RIVET AND ROUND PLATE IN CONCRETE CYLINDER, SOUTHEAST CORNER OF ELKHORN RD AND CONQUISTADOR ST
 BM NO 66 STATION 8LV90 19NW6 ELEVATION = 2803.77 (NAVD 88)

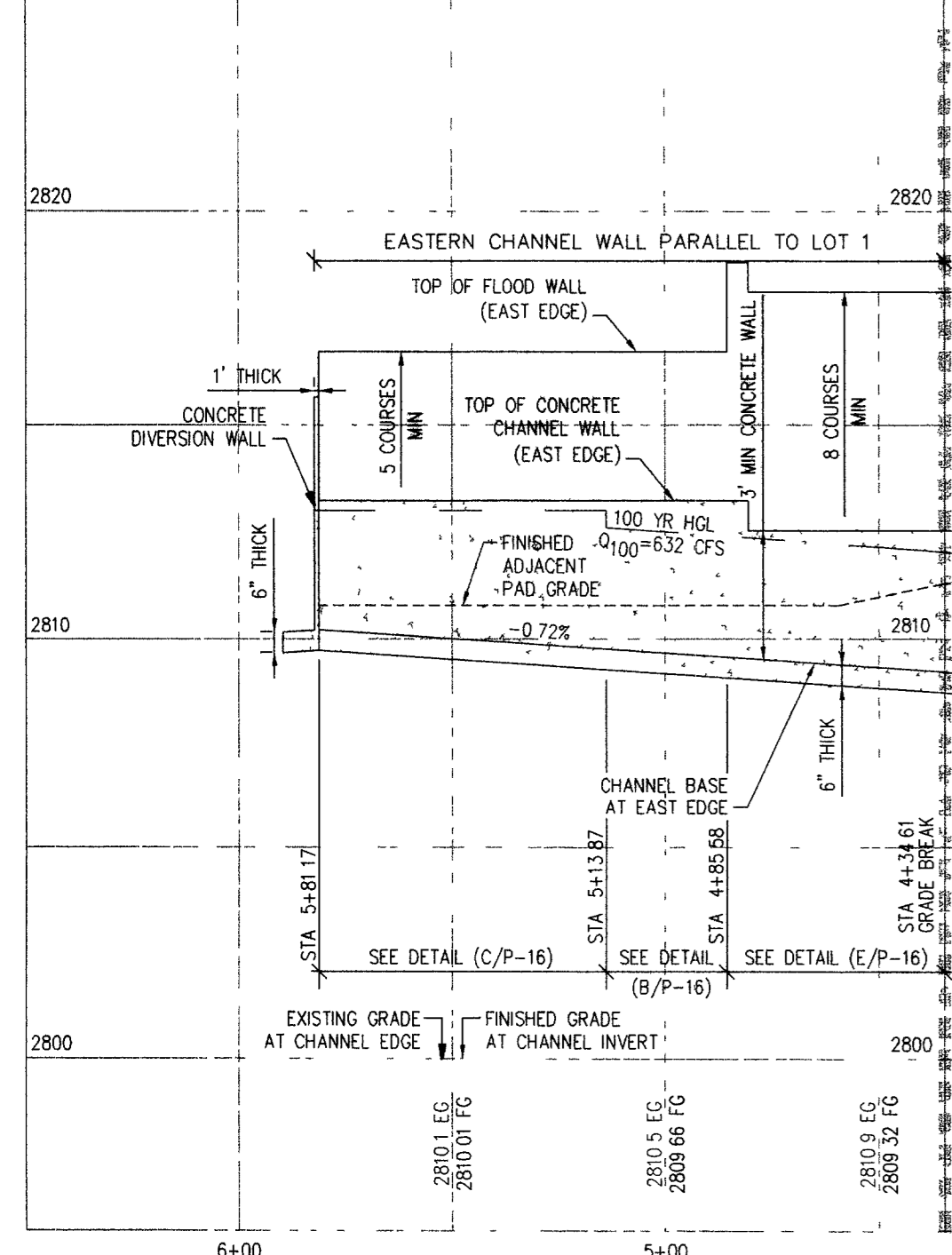
BASIS OF BEARING
 THE BASIS OF BEARINGS FOR THIS SURVEY IS BASED ON THE FOUND AND HELD MONUMENTS MARKING THE SOUTHERLY LINE OF THE SOUTHWEST QUARTER (SW1/4) OF THE SOUTHEAST QUARTER (SE1/4) OF SECTION 13, T19S, R60E, MDM, CLARK COUNTY, NEVADA PER RECORD OF SURVEY BOOK 123, PAGE 32, CLARK COUNTY RECORDER'S OFFICE AS SOUTH 88°46'46" EAST



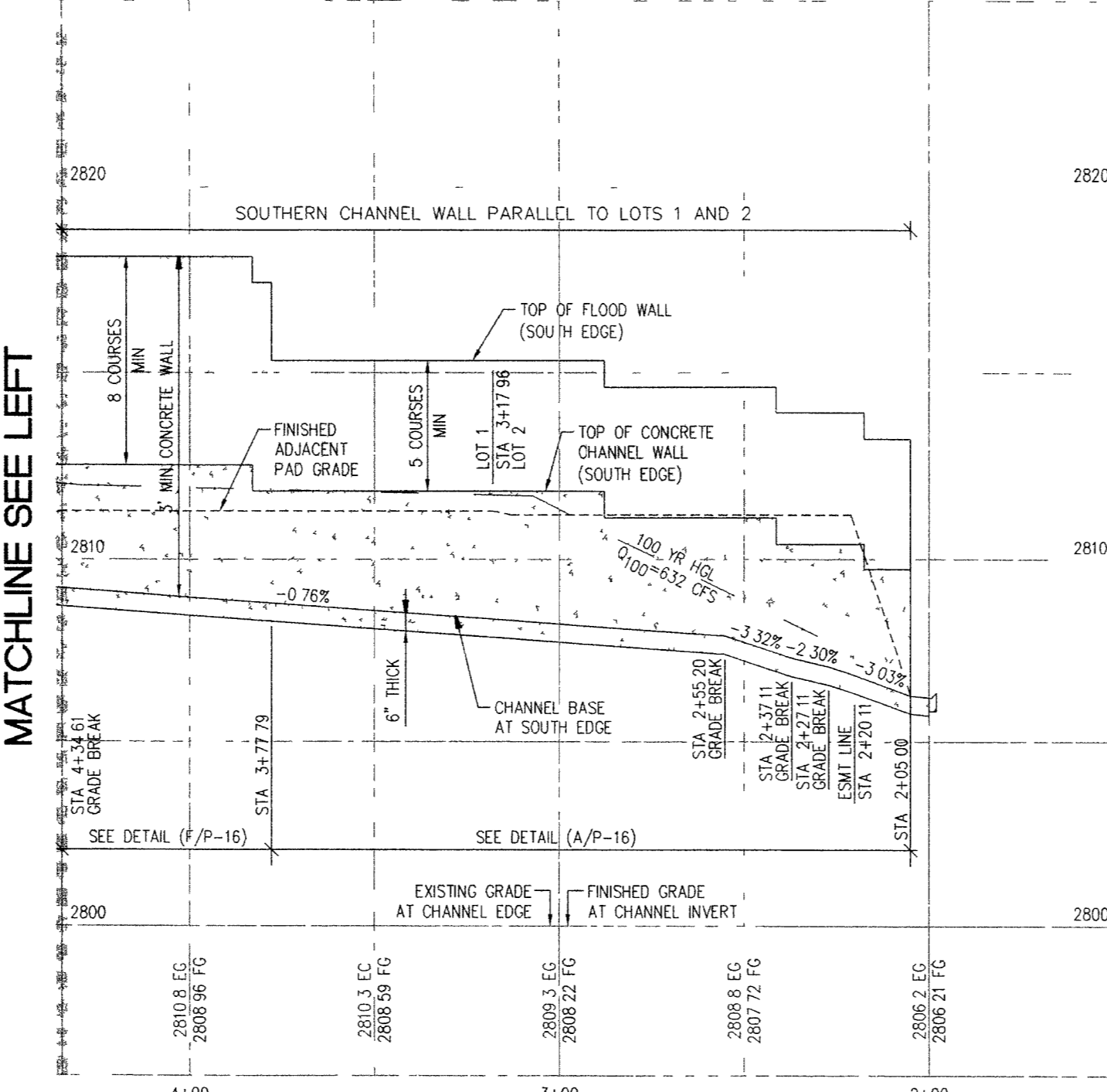
WESTERN EDGE PROFILE
 HOR : 1"=40'
 VERT : 1"=4'



NORTHERN EDGE PROFILE
 HOR : 1"=40'
 VERT : 1"=4'

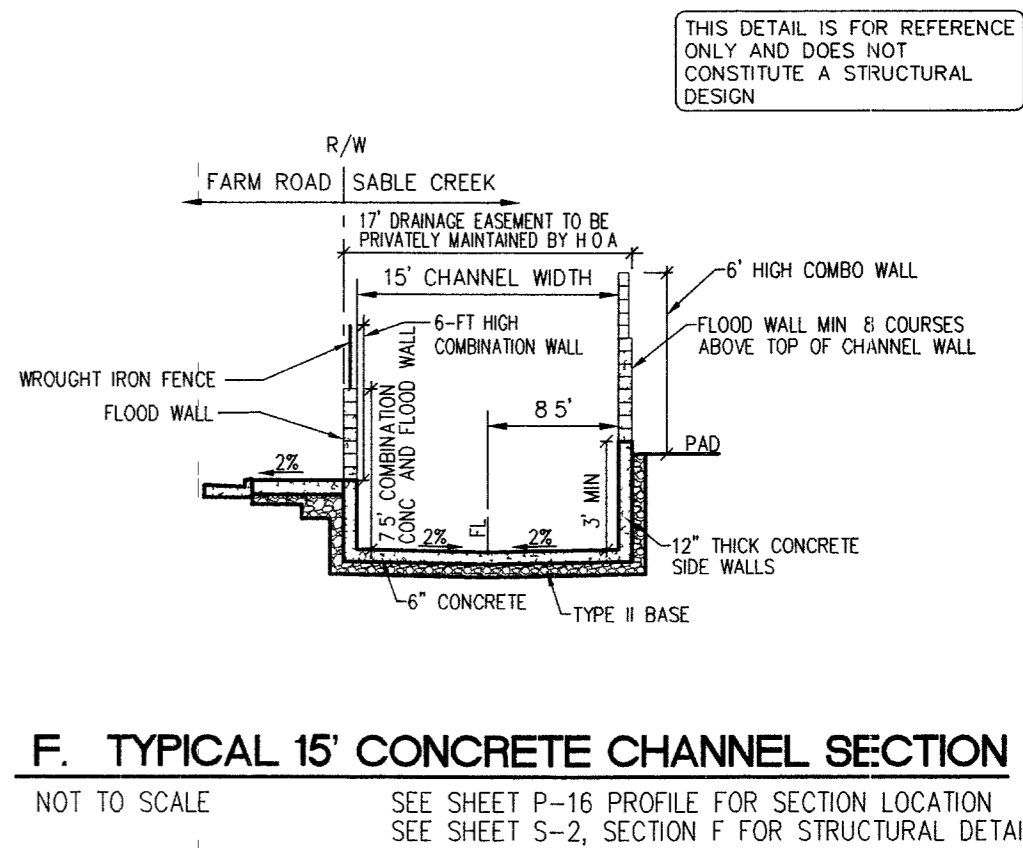
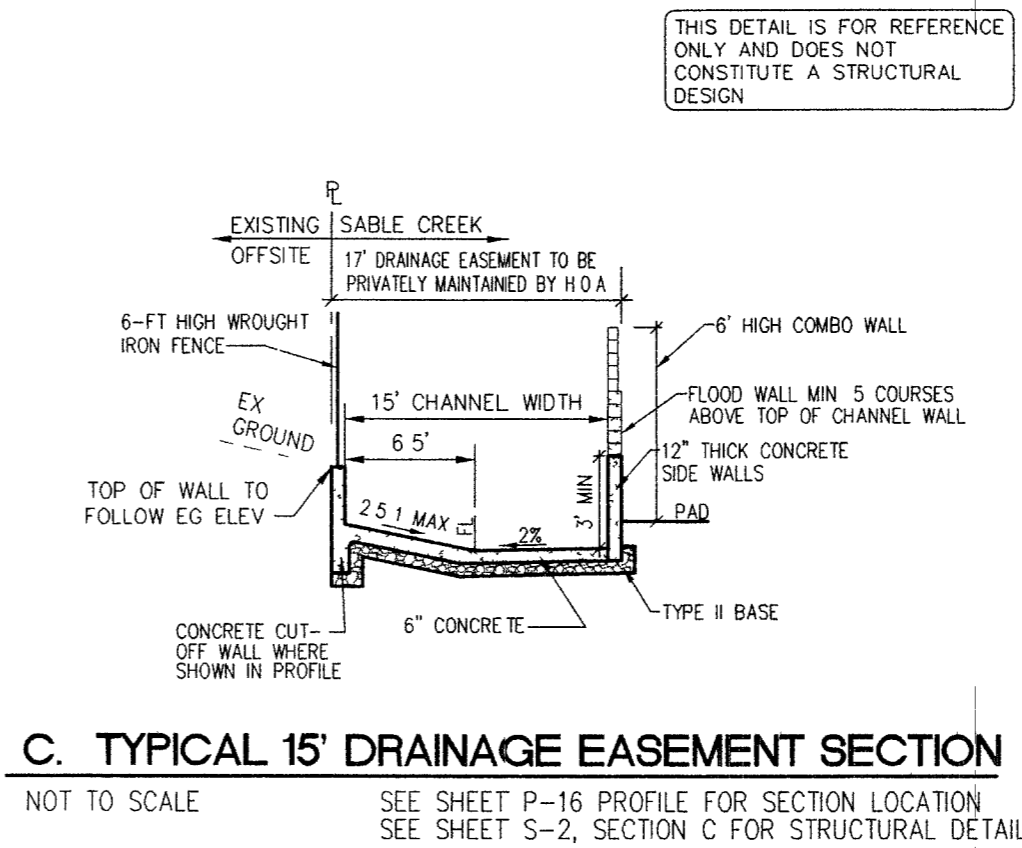
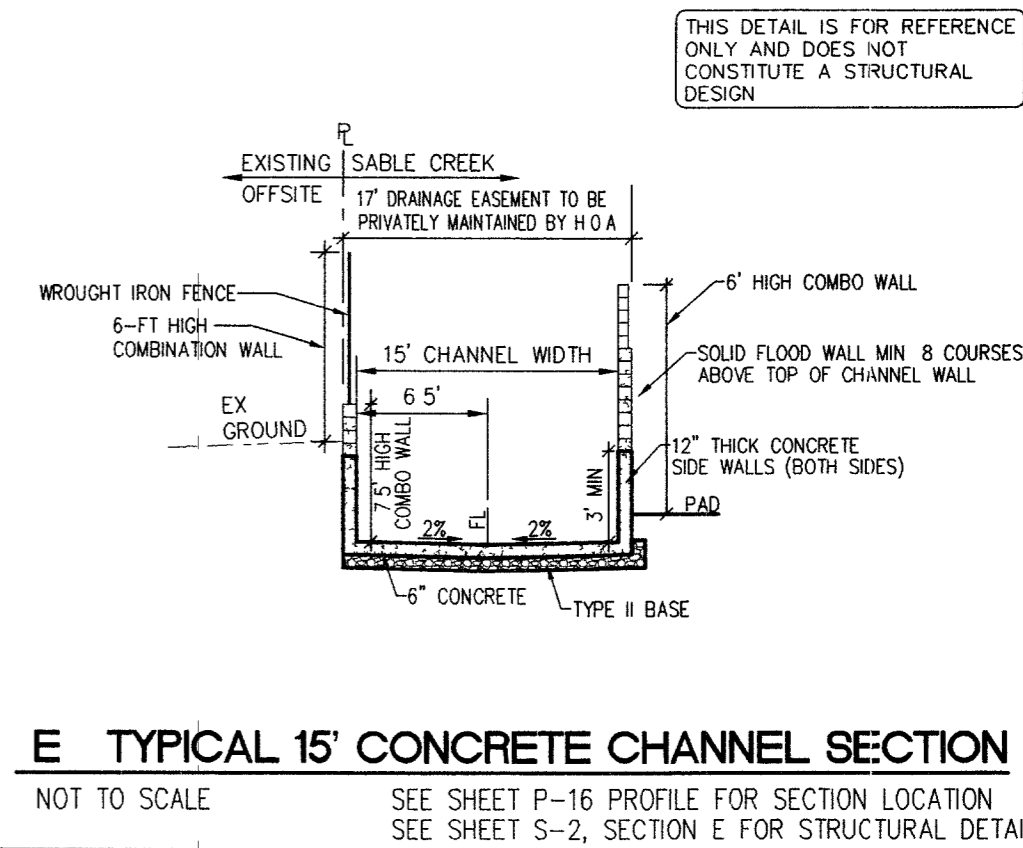
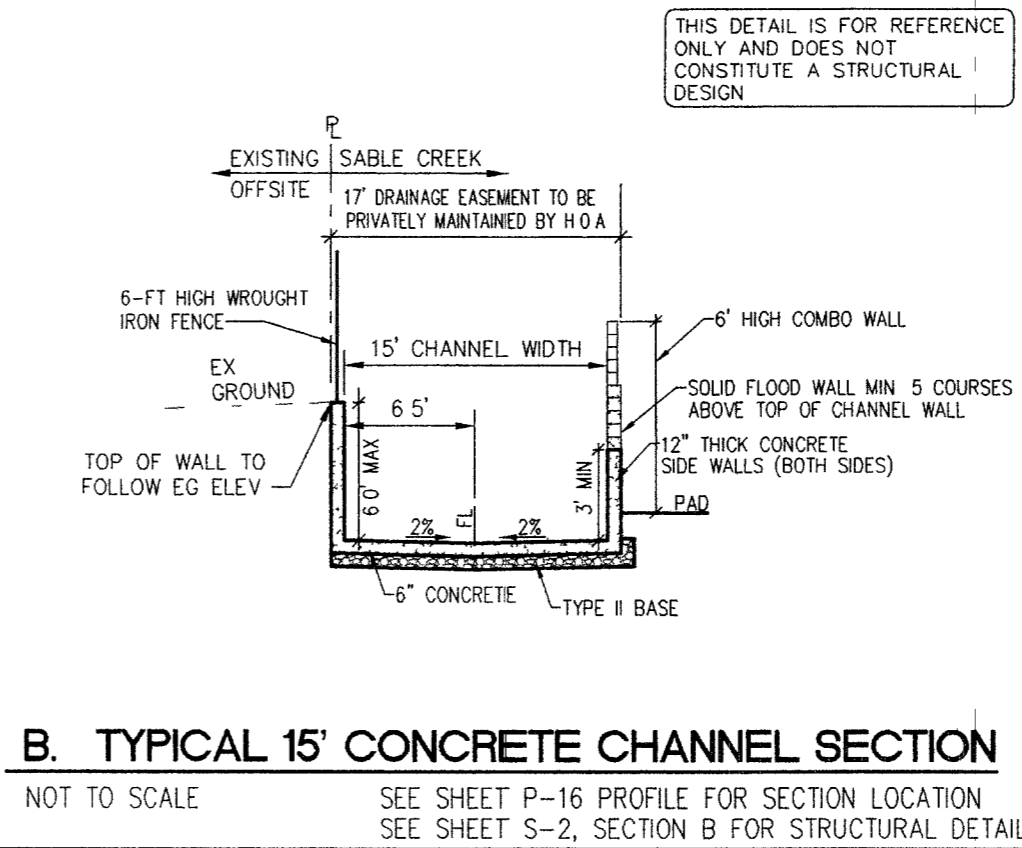
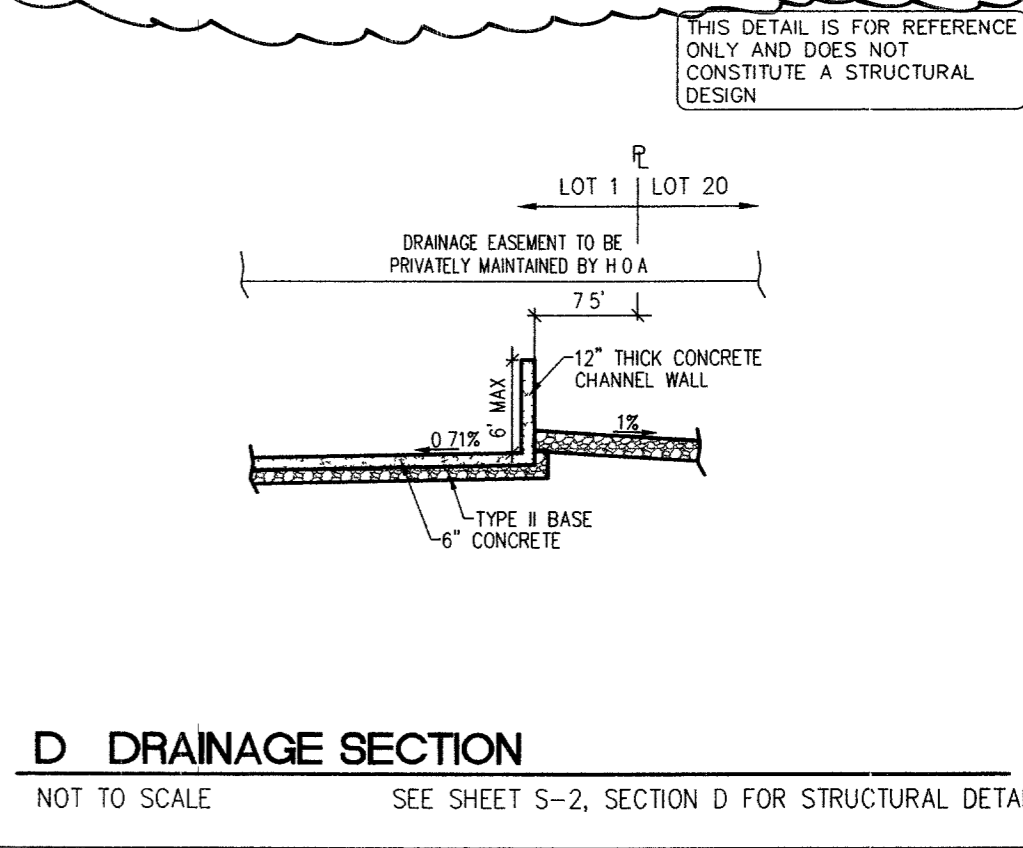
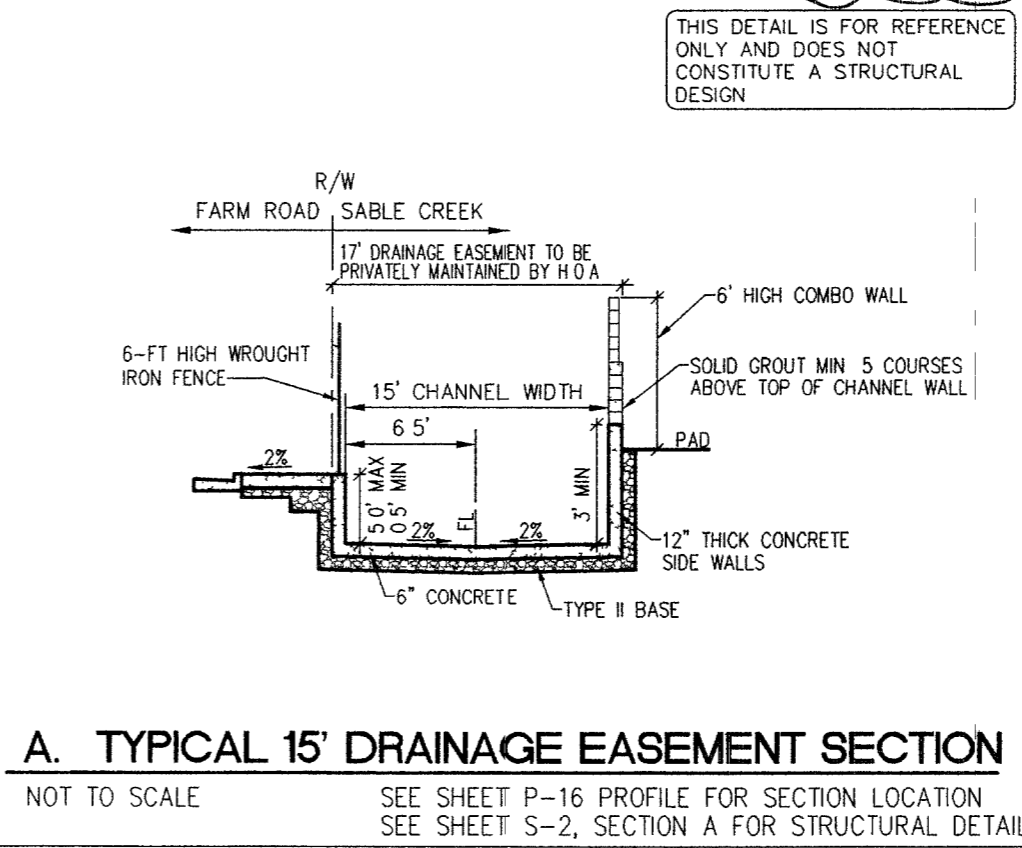


EASTERN EDGE PROFILE
 HOR : 1"=40'
 VERT : 1"=4'



SOUTHERN EDGE PROFILE
 HOR : 1"=40'
 VERT : 1"=4'

- CONSTRUCTION NOTES**
- CONSTRUCT 8" WIDE CROSS GUTTER PER DETAIL CCAUSD #228 (SEE DETAIL ON SHEET D-2)
 - CONSTRUCT 4" WIDE BY 4" THICK SIDEWALK PER CCAUSD #234
 - CONSTRUCT SIDEWALK RAMP USING ARMOR TILE TRUNCATED DOMES OR EQUIVALENT PER CCAUSD #235, CASE 1
 - CONSTRUCT ROLL CURB PER DETAIL CCAUSD #217A
 - CONSTRUCT "L" TYPE CURB PER CCAUSD #216
 - CONSTRUCT 2" AC ON 4" TYPE II A B ON 6" TYPE I OR NATIVE, SEE SECTION "C", SHEET D-1
 - SAW CUT, REMOVE AND REPLACE EXISTING PAVEMENT PER PROP. STREET SECTION
 - CONSTRUCT 10" TRANSITION FROM ROLL CURB TO "L" CURB SEE DETAIL "X", SHEET D-2
 - CONSTRUCT 5" WIDE BY 4" THICK SIDEWALK PER CCAUSD #234
 - CONTRACTOR TO VERIFY ELEV OF EXIST CURB AND GUTTER, PVM, STORM DRAIN, RETAINING WALL ELEVATIONS, AND SDWK PRIOR TO CONST. NOTIFY ENGINEER OF ANY CONFLICTS
 - CONST SIDEWALK UNDERDRAIN PER CCAUSD NO 236
 - CONST "A" TYPE MEDIAN CURB PER CCAUSD #219
 - CONST DEPRESSION CURB PER CCAUSD #227
 - CONST BLOCK WALL OPENING PER SECTION "C", SHEET D-4
 - CONST 4" AC ON 4" TYPE II A B ON 9" TYPE I, SEE SECTION "A", SHEET D-1
 - CONST 4" AC ON 4" TYPE II A B ON 9" TYPE I, SEE SECTION "G", SHEET D-3
 - CONST 4" AC ON 4" TYPE II A B ON 9" TYPE I, SEE SECTION "E", SHEET D-1
 - CONST 3" AC ON 9" TYPE II A B, SEE SECTION "B", SHEET D-1
 - CONST 3" AC ON 9" TYPE II A B, SEE SECTION "D", SHEET D-3
 - CONSTRUCT CONC CUTOFF WALL PER SECTION "C", SHEET D-3
 - CONCRETE ENCASUREMENT PER UDACS SEC 2.19
 - CONST BLOCK WALL OPENING PER DETAIL "D" ON SHT D-6



- EASEMENT NOTES**
- 37' DRAINAGE EASEMENT, LVWD WATER EASEMENT, PUBLIC UTILITY EASEMENT (TO BE MAINTAINED BY H.O.A.) AND CLV PUBLIC SEMER EASEMENT
 - 20' DRAINAGE EASEMENT (TO BE MAINTAINED BY H.O.A.) AND CLV PUBLIC SEMER EASEMENT
 - DRAINAGE EASEMENT TO BE PRIVATELY MAINTAINED BY H.O.A. (SEE DIMENSION ON PLAN FOR EASEMENT WIDTH)

CLARK COUNTY DEPARTMENT OF DEVELOPMENT SERVICES
 ACCEPTANCE OF PLANS FOR FILING

BY _____
 ACCEPTANCE OF THESE PLANS FOR FILING SHALL NOT BE CONSTRUED TO BE A PERMIT FOR OR AN APPROVAL OF ANY VIOLATION OF ANY OF THE PROVISIONS OF THE STATE OR COUNTY LAWS AND/OR SPECIFICATIONS CLARK COUNTY SHALL BE HELD FREE FROM DAMAGES WHICH MAY RESULT FROM THE CONSTRUCTION OF THE IMPROVEMENTS FROM THE ENGINEERING DESIGN DEPICTED HEREIN

NOTE POWER POLES AND/OR OTHER EXISTING FACILITIES NOT IN PROPER LOCATION BASED ON PROPOSED IMPROVEMENTS SHOWN HEREON WILL BE RELOCATED AT NO EXPENSE TO CLARK COUNTY

Call before you UnderGround
 1-702-455-7511
 1-702-229-6611

Call before you Dig.
 1-800-227-2600
 UNDERGROUND SERVICE (USA)

Call before you Dig.
 1-702-227-2929

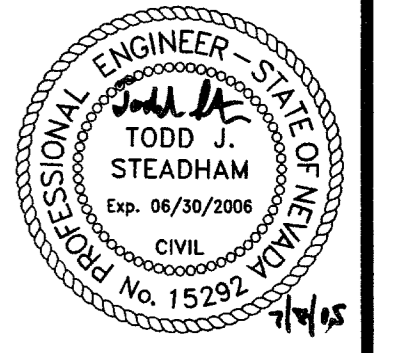
SLATER HANIFAN GROUP
 CONSULTING ENGINEERS & PLANNERS
 5740 S. ARVILLE STREET #216, LAS VEGAS, NV 89118
 PHONE (702) 284-5300 FAX (702) 284-5399

NO.	DESCRIPTION	DATE	BY
1	REVISED KEY MAP	4/10/16	JLH

CLARK COUNTY, NEVADA
PINNACLE HOMES
 SABLE CREEK
 DRAINAGE CHANNEL PLAN AND PROFILE
 AND DRAINAGE SECTIONS

SECTION 18
 TOWNSHIP 19 SOUTH
 RANGE 60 EAST, M.D.M.

DATE: 07/07/05
 DRAFTER: DMB
 DESIGNER: DMB
 CHECKED: TJS
 PROJECT NO.
PIN0402-001



PP-16
 SHEET 30 OF 44
 CLV DWG #3071930
 CC-HTE# 05-7995

File: J:\V\0402-2506\Drawings\PPIN0402-PP16.dwg Job: 08, 2005 - 09 19