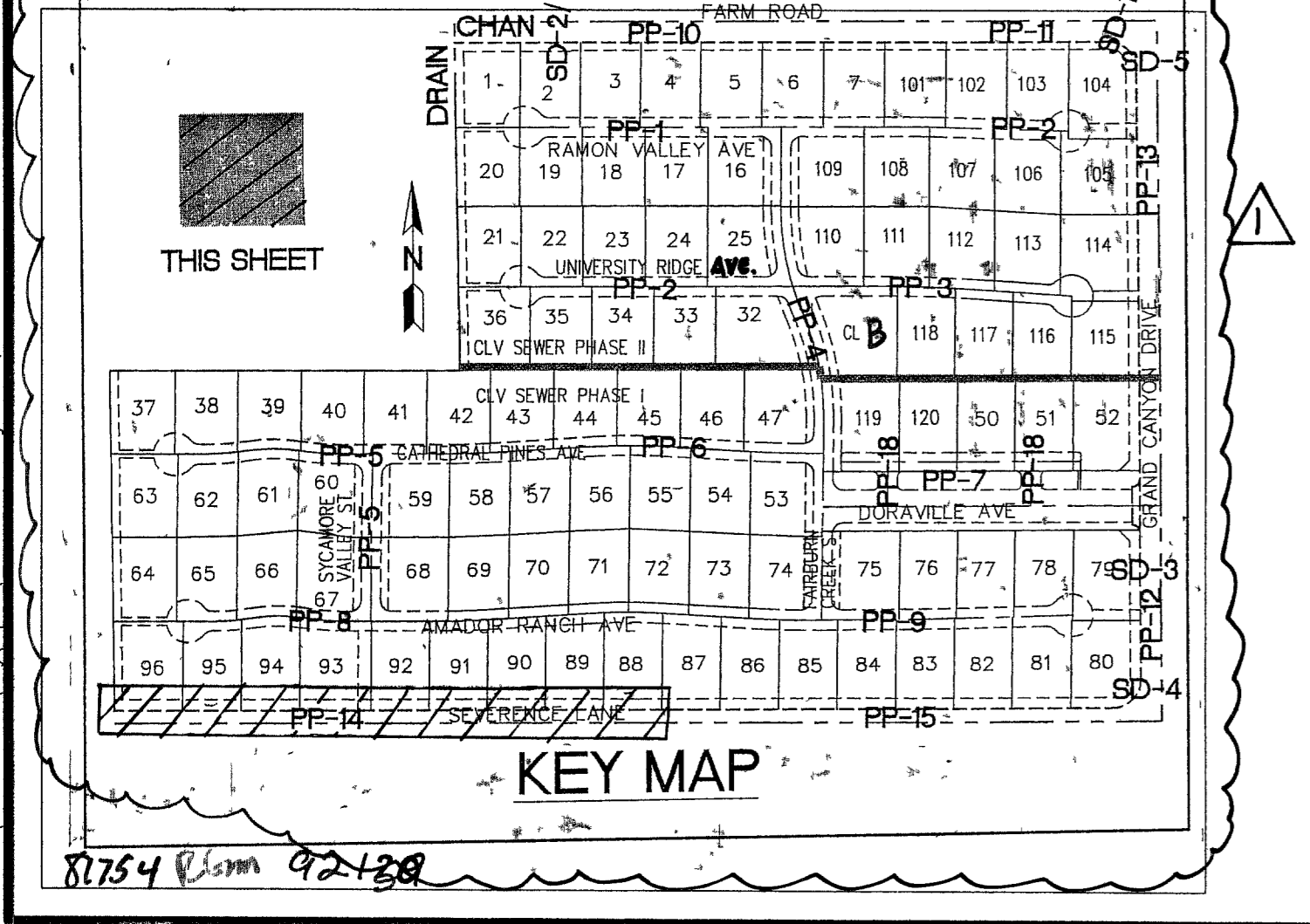


- CONSTRUCTION NOTES**
- 1) CONSTRUCT 8" WIDE CROSS GUTTER PER DETAIL CCAUSD #228 (SEE DETAIL ON SHEET D-2)
 - 2) CONSTRUCT 4" WIDE BY 4" THICK SIDEWALK PER CCAUSD #234
 - 3) CONSTRUCT SIDEWALK RAMP USING ARMOR TLE TRUNCATED DOMES OR EQUIVALENT PER CCAUSD #235, CASE 1
 - 4) CONSTRUCT ROLL CURB PER DETAIL CCAUSD #217A
 - 5) CONSTRUCT "L" TYPE CURB PER CCAUSD #216
 - 6) CONSTRUCT 2" AC ON 4" TYPE II AB ON 6" TYPE I OR NATIVE, SEE SECTION "C", SHEET D-1
 - 7) SAWCUT, REMOVE AND REPLACE EXISTING PAVEMENT PER PROP STREET SECTION
 - 8) CONSTRUCT 10" TRANSITION FROM ROLL CURB TO "L" CURB SEE DETAIL "X", SHEET D-2
 - 9) CONSTRUCT 5" WIDE BY 4" THICK SIDEWALK PER CCAUSD #234
 - 10) CONTRACTOR TO VERIFY ELEV OF EXIST CURB AND GUTTER, PAINT, STORM DRAIN, RETAINING WALL ELEVATIONS, AND SOWK PRIOR TO CONST. NOTIFY ENGINEER OF ANY CONFLICTS
 - 11) CONST SIDEWALK UNDERDRAIN PER CCAUSD NO 236
 - 12) CONST "A" TYPE MEDIAN CURB PER CCAUSD #219
 - 13) CONST DEPRESSED CURB PER CCAUSD #227
 - 14) CONST BLOCK WALL OPENING PER SECTION "C", SHEET D-4
 - 15) CONST 4" AC ON 4" TYPE II AB ON 9" TYPE I, SEE SECTION "A", SHEET D-1
 - 16) CONST 4" AC ON 4" TYPE II AB ON 9" TYPE I, SEE SECTION "C", SHEET D-3
 - 17) CONST 4" AC ON 4" TYPE II AB ON 9" TYPE I, SEE SECTION "E", SHEET D-1
 - 18) CONST 3" AC ON 9" TYPE II AB, SEE SECTION "B", SHEET D-1
 - 19) CONST 3" AC ON 9" TYPE II AB, SEE SECTION "D", SHEET D-3
 - 20) CONSTRUCT CONC CUTOFF WALL PER SECTION "C", SHEET D-3
 - 21) CONCRETE ENCASUREMENT PER UDACS SEC. 219
 - 22) CONST BLOCK WALL OPENING PER DETAIL "D" ON SHIT D-6



PROFILE
 HOR 1" = 40'
 VERT 1" = 4'

- EASEMENT NOTES**
- 1) 37' DRAINAGE EASEMENT, LVWD WATER EASEMENT, PUBLIC UTILITY EASEMENT (TO BE MAINTAINED BY H.O.A.) AND CLV PUBLIC SEWER EASEMENT
 - 2) 20' DRAINAGE EASEMENT (TO BE MAINTAINED BY H.O.A.) AND CLV PUBLIC SEWER EASEMENT
 - 3) DRAINAGE EASEMENT TO BE PRIVATELY MAINTAINED BY H.O.A. (SEE DIMENSION ON PLAN FOR EASEMENT WIDTH)

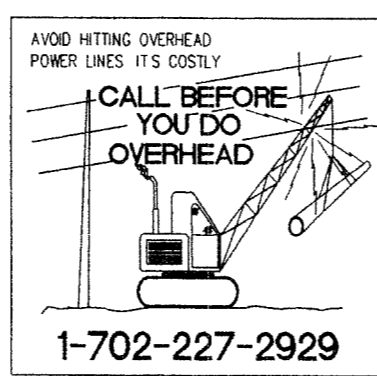
BENCHMARK
 BENCHMARK FOUND CITY OF LAS VEGAS RIVET AND ROUND PLATE IN CONCRETE CYLINDER, SOUTHEAST CORNER OF ELKHORN RD AND CONQUISTADOR ST
 BM NO 66 STATION BLV90 19NW6 ELEVATION = 2803.77 (NAVD 88)

BASIS OF BEARING
 THE BASIS OF BEARINGS FOR THIS SURVEY IS BASED ON THE FOUND AND HELD MONUMENTS MARKING THE SOUTHERLY LINE OF THE SOUTHWEST QUARTER (SW1/4) OF THE SOUTHEAST QUARTER (SE1/4) OF SECTION 13, T8S, R06E, MON. CLARK COUNTY, NEVADA PER RECORD OF SURVEY BOOK 123, PAGE 32, CLARK COUNTY RECORDER'S OFFICE AS SOUTH 88°46'46" EAST

CLARK COUNTY DEPARTMENT OF DEVELOPMENT SERVICES
 ACCEPTANCE OF PLANS FOR FILING

BY
 ACCEPTANCE OF THESE PLANS FOR FILING SHALL NOT BE CONSTRUED TO BE A PERMIT FOR OR AN APPROVAL OF ANY VIOLATION OF ANY OF THE PROVISIONS OF THE STATE OR COUNTY LAWS AND/OR SPECIFICATIONS CLARK COUNTY SHALL BE HELD FREE FROM DAMAGES WHICH MAY RESULT FROM THE CONSTRUCTION OF THE IMPROVEMENTS FROM THE ENGINEERING DESIGN DEPICTED HEREIN

NOTE POWER POLES AND/OR OTHER EXISTING FACILITIES NOT IN PROPER LOCATION BASED ON PROPOSED IMPROVEMENTS SHOWN HEREON WILL BE RELOCATED AT NO EXPENSE TO CLARK COUNTY



Avoid cutting underground utility lines. It's costly.
Call before you Dig.
 1-800-227-2600
 UNDERGROUND SERVICE (USA)



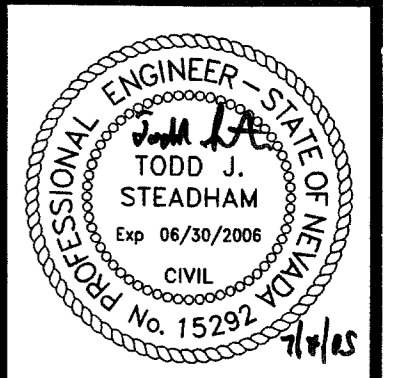
NO.	DESCRIPTION	DATE	BY	APP.
1	REVISED KEYMAP	7/10/06	JJR	JJR

CLARK COUNTY, NEVADA

PINNACLE HOMES
 SABLE CREEK
 SEVERENCE LN PLAN AND PROFILE
 STA 2+50 TO STA 13+50

SECTION 18 SOUTH
 TOWNSHIP 8 RANGE 60 EAST, M.D.M.

DATE: 07/07/05
 DRAFTER: JNR
 DESIGNER: JNR
 CHECKED: TJS
 PROJECT NO.
PIN0402-001



PP-14
 SHEET 27 OF 44
 CLV DWG #307V130
 CC HTE# 05-7995