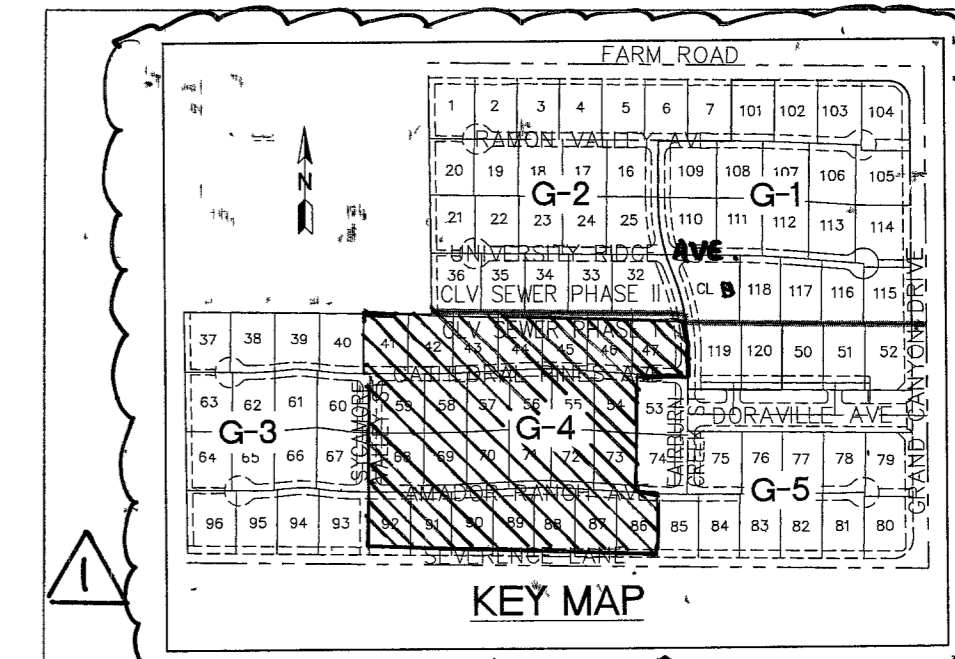
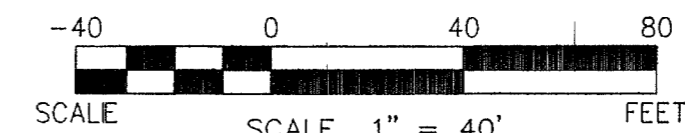


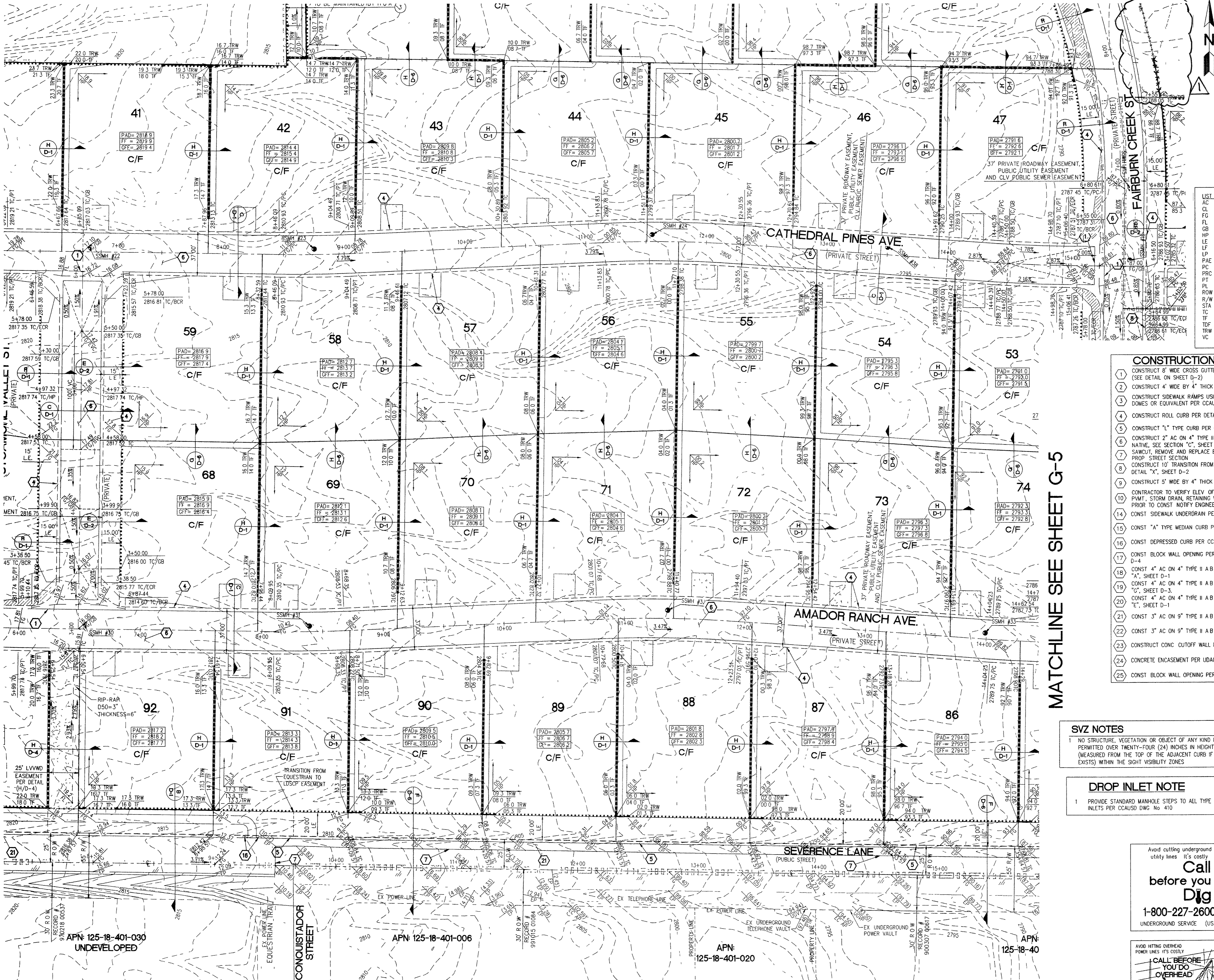
MATCHLINE SEE SHEET G-2



**SLATER HANIFAN GROUP**  
CONSULTING ENGINEERS & PLANNERS  
5740 S. ARVILLE STREET #216, LAS VEGAS, NV 89118  
PHONE (702) 284-5300 FAX (702) 284-5399

MATCHLINE SEE SHEET G-3

MATCHLINE SEE SHEET G-5



- EASEMENT NOTES**
- 37' DRAINAGE EASEMENT, LVMWD WATER EASEMENT, PUBLIC UTILITY EASEMENT (TO BE MAINTAINED BY H.O.A.) AND CLV PUBLIC SEWER EASEMENT
  - 20' DRAINAGE EASEMENT (TO BE MAINTAINED BY H.O.A.) AND CLV PUBLIC SEWER EASEMENT
  - DRAINAGE EASEMENT TO BE PRIVATELY MAINTAINED BY H.O.A. (SEE DIMENSION ON PLAN FOR EASEMENT WIDTH)

- NOTES**
- SECTION 2 OF THE CLARK COUNTY BUILDING OFFICE OPERATIONS DIVISION DRAINAGE COMPLIANCE REPORT MUST BE COMPLETED BY THE ENGINEER AND SUBMITTED TO DEVELOPMENT SERVICES INSPECTION SCHEDULING, FOR ALL WESTERN COLLECTION CHANNELS AND DRAINAGE EASEMENTS, PRIOR TO PAD GRADING INSPECTIONS FOR THE ENTIRE SITE
  - ROW FOR JENSEN STREET AND VIA PROVENZA AVENUE SHALL BE VACATED BY VS-0948-04
  - CONSTRUCT ALL STREET INTERSECTIONS PER CCAUSD #225
  - REF SOILS REPORT BY OWENS, No. E-04-296, DATED 10/11/04

- LEGEND**
- SVZ: SIGHT VISIBILITY ZONE
  - LOT NUMBER
  - PROPOSED PAD ELEV.
  - PROPOSED FINISHED FLOOR ELEV.
  - GARAGE FINISHED FLOOR ELEV.
  - EDGE OF PAVEMENT MARKER
  - 2:1 MAX SCARP OR PER REF DETAIL
  - EXISTING CONTOUR (5' INTERVAL)
  - EXISTING CONTOUR (1' INTERVAL)
  - FIRE HYDRANT
  - GRAB: BREAK
  - FUTURE OR PER OTHERS DESIGN ELEVATION
  - PROPOSED ELEVATION
  - EXISTING ELEVATION
  - 6" DECORATIVE PERIMETER BLOCK WALL W/RETAINING
  - 6" DECORATIVE PERIMETER BLOCK WALL
  - RETAINING WALL
  - KNEE WALL
  - WROUGHT IRON FENCE
  - EXISTING OR PER OTHERS DESIGN STORM DRAIN MANHOLE
  - PROPOSED MANHOLE
  - BOUNDARY LINE
  - MATCH LINE
  - PHASE LINE / COMMON LOT BOUNDARY
  - DENOTES "L" CURB AND GUTTER
  - CONC ENCASE PER UDACS SEC 2.19
  - C/F DENOTES LOT W/ CUT TO FILL TRANSITION LINE

- CONSTRUCTION NOTES**
- CONSTRUCT 8" WIDE CROSS GUTTER PER DETAIL CCAUSD #228 (SEE DETAIL ON SHEET D-2)
  - CONSTRUCT 4" WIDE BY 4" THICK SIDEWALK PER CCAUSD #234
  - CONSTRUCT SIDEWALK RAMP USING ARMOR TILE TRUNCATED DOMES OR EQUIVALENT PER CCAUSD #235, CASE 1
  - CONSTRUCT ROLL CURB PER DETAIL CCAUSD #217A
  - CONSTRUCT "L" TYPE CURB PER CCAUSD #216
  - CONSTRUCT 2" AC ON 4" TYPE II A B ON 6" TYPE I OR NATIVE, SEE SECTION "C", SHEET D-1
  - SAWCUT, REMOVE AND REPLACE EXISTING PAVEMENT PER PROP. STREET SECTION
  - CONSTRUCT 10" TRANSITION FROM ROLL CURB TO "L" CURB SEE DETAIL "X", SHEET D-2
  - CONSTRUCT 5" WIDE BY 4" THICK SIDEWALK PER CCAUSD #234
  - CONTRACTOR TO VERIFY ELEV. OF EXIST CURB AND GUTTER, P.V.M.T., STORM DRAIN, RETAINING WALL ELEVATIONS, AND SDWK PRIOR TO CONST NOTIFY ENGINEER OF ANY CONFLICTS.
  - CONST SIDEWALK UNDERDRAIN PER CCAUSD NO 236
  - CONST "A" TYPE MEDIAN CURB PER CCAUSD #219
  - CONST DEPRESSION CURB PER CCAUSD #227
  - CONST BLOCK WALL OPENING PER SECTION "C", SHEET D-4
  - CONST 4" AC ON 4" TYPE II A B ON 9" TYPE I, SEE SECTION "A", SHEET D-1
  - CONST 4" AC ON 4" TYPE II A B ON 9" TYPE I, SEE SECTION "C", SHEET D-3
  - CONST 4" AC ON 4" TYPE II A B ON 9" TYPE I, SEE SECTION "E", SHEET D-1
  - CONST 3" AC ON 9" TYPE II A B, SEE SECTION "B", SHEET D-1
  - CONST 3" AC ON 9" TYPE II A B, SEE SECTION "B", SHEET D-3
  - CONSTRUCT CONC CUTOFF WALL PER SECTION "C", SHEET D-3
  - CONCRETE ENCASEMENT PER UDACS SEC 2.19
  - CONST BLOCK WALL OPENING PER DETAIL "D" ON SHIT D-6

- SVZ NOTES**
- NO STRUCTURE, VEGETATION OR OBJECT OF ANY KIND IS PERMITTED OVER TWENTY-FOUR (24) INCHES IN HEIGHT (MEASURED FROM THE TOP OF THE ADJACENT CURB IF CURB EXISTS) WITHIN THE SIGHT VISIBILITY ZONES
- DROP INLET NOTE**
- PROVIDE STANDARD MANHOLE STEPS TO ALL TYPE "CM" DROP INLETS PER CCAUSD DWG No 410

**BASIS OF BEARING**

THE BASIS OF BEARINGS FOR THIS SURVEY IS BASED ON THE FOUND AND HELD MONUMENTS MARKING THE SOUTHERLY LINE OF THE SOUTHWEST QUARTER (SW1/4) OF THE SOUTHEAST QUARTER (SE1/4) OF SECTION 13, T19S, R60E, WDM, CLARK COUNTY, NEVADA PER RECORD OF SURVEY BOOK 123, PAGE 32, CLARK COUNTY RECORDER'S OFFICE AS SOUTH 88°46'46" EAST

**BENCHMARK**

BENCHMARK: FOUND CITY OF LAS VEGAS RIVET AND ROUND PLATE IN CONCRETE CYLINDER, SOUTHEAST CORNER OF ELKHORN RD AND CONQUISTADOR ST.

BM NO 66 STATION BLV90 19NNW6 ELEVATION = 2803.77 (NAVD 88)

**FLOOD ZONE NOTE**

THE PROJECT AREA IS LOCATED WITHIN A FEMA ZONE X PER FLOOD INSURANCE RATE MAP PANEL 32003C1745E, DATED SEPTEMBER 27, 2002

Avoid cutting underground utility lines. It's costly before you Dig.  
1-800-227-2600 UNDERGROUND SERVICE (USA)

AVOID HITTING OVERHEAD POWER LINES. IT'S COSTLY CALL BEFORE YOU DO OVERHEAD.  
1-702-227-2929

Call before you Dig UnderGround  
1-702-455-7511  
1-702-229-6611

CLARK COUNTY DEPARTMENT OF DEVELOPMENT SERVICES ACCEPTANCE OF PLANS FOR 'ILING

BY *Joseph Steadham* 6/21/05

ACCEPTANCE OF THESE PLANS FOR FILING SHALL NOT BE CONSTRUED TO BE A PERMIT FOR OR AN APPROVAL OF ANY VIOLATION OF ANY OF THE PROVISIONS OF THE STATE OR COUNTY LAWS AND/OR SPECIFICATIONS CLARK COUNTY SHALL BE HELD FREE FROM DAMAGES WHICH MAY RESULT FROM THE CONSTRUCTION OF THE IMPROVEMENTS FROM THE ENGINEERING DESIGN DEPICTED HEREIN

NOTE: POWER POLES AND/OR OTHER EXISTING FACILITIES NOT IN PROPER LOCATION BASED ON INSURANCE RATE MAP PANEL 32003C1745E, DATED SEPTEMBER 27, 2002

NO.	DESCRIPTION	DATE	BY
1	REVISED JAVIPT AND KEY MAP	5/12/04	JL

CLARK COUNTY, NEVADA

PINNACLE HOMES

SABLE CREEK

GRADING PLAN IV

SECTION 18 TOWNSHIP 19 SOUTH RANGE 60 EAST, M.D.M.

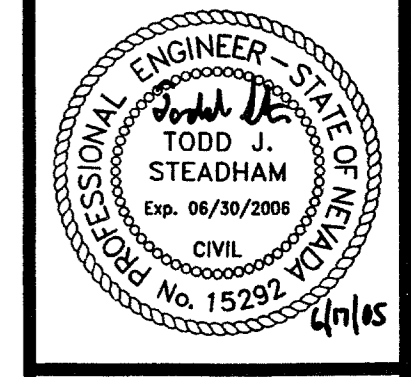
DATE: 06/20/05

DRAFTER: JR/JB/DB

DESIGNER: TS/JB/DB

CHECKED: TS

PROJECT NO. PINO402-001



**G-4**

SHEET 35 OF 44

CLV DWG #307U930

CC HTE# 05-7995

81762 Uom 9.2138

REV. 1