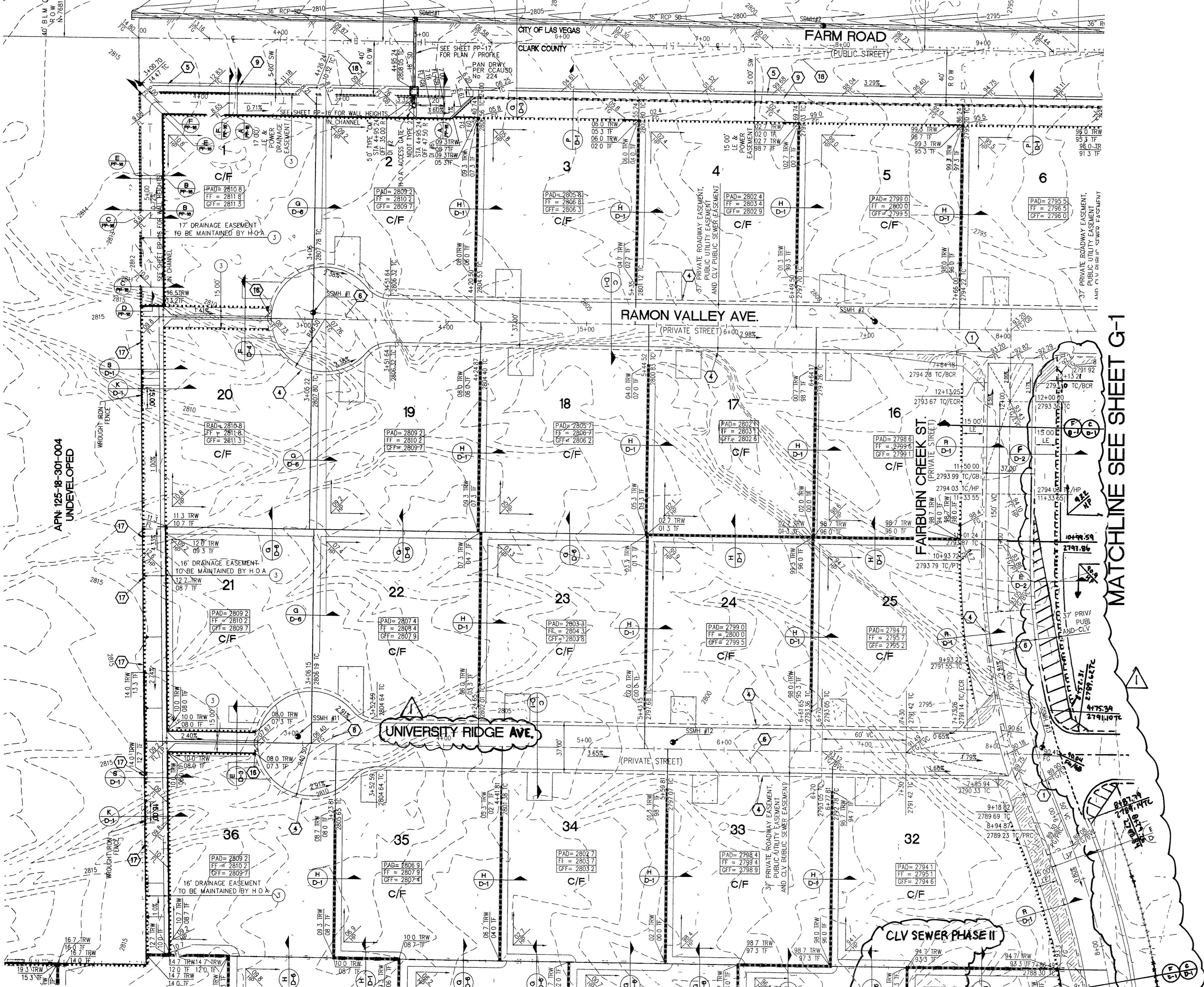
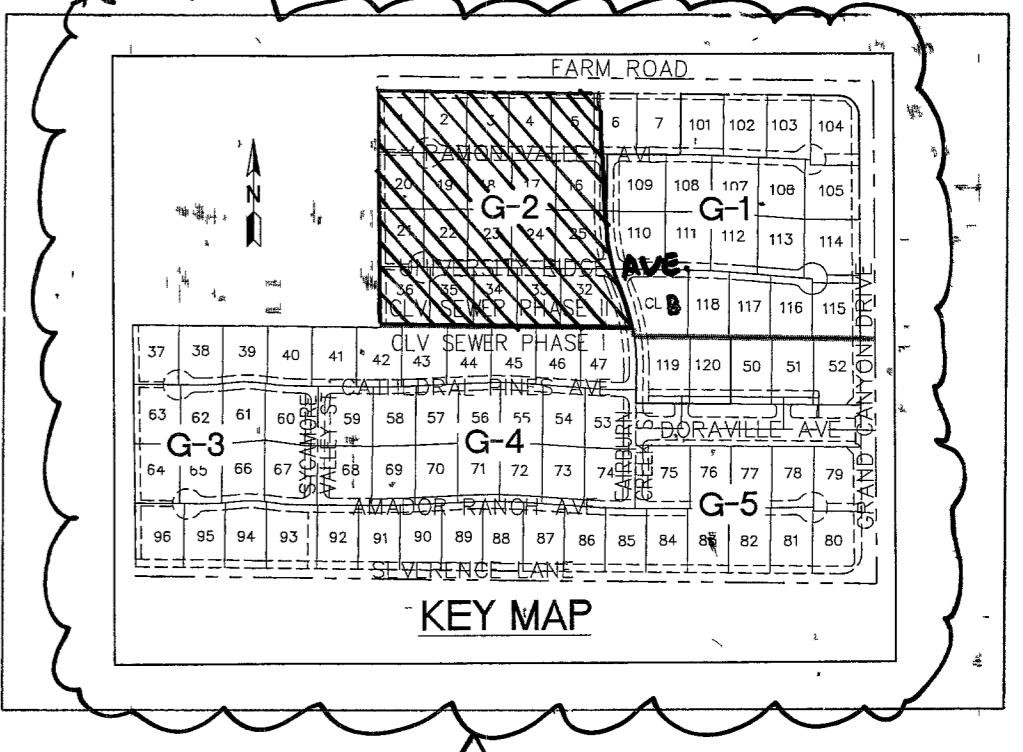
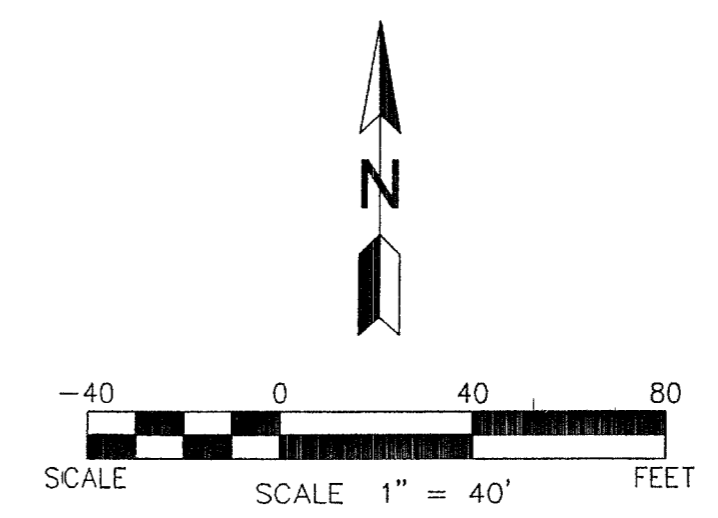


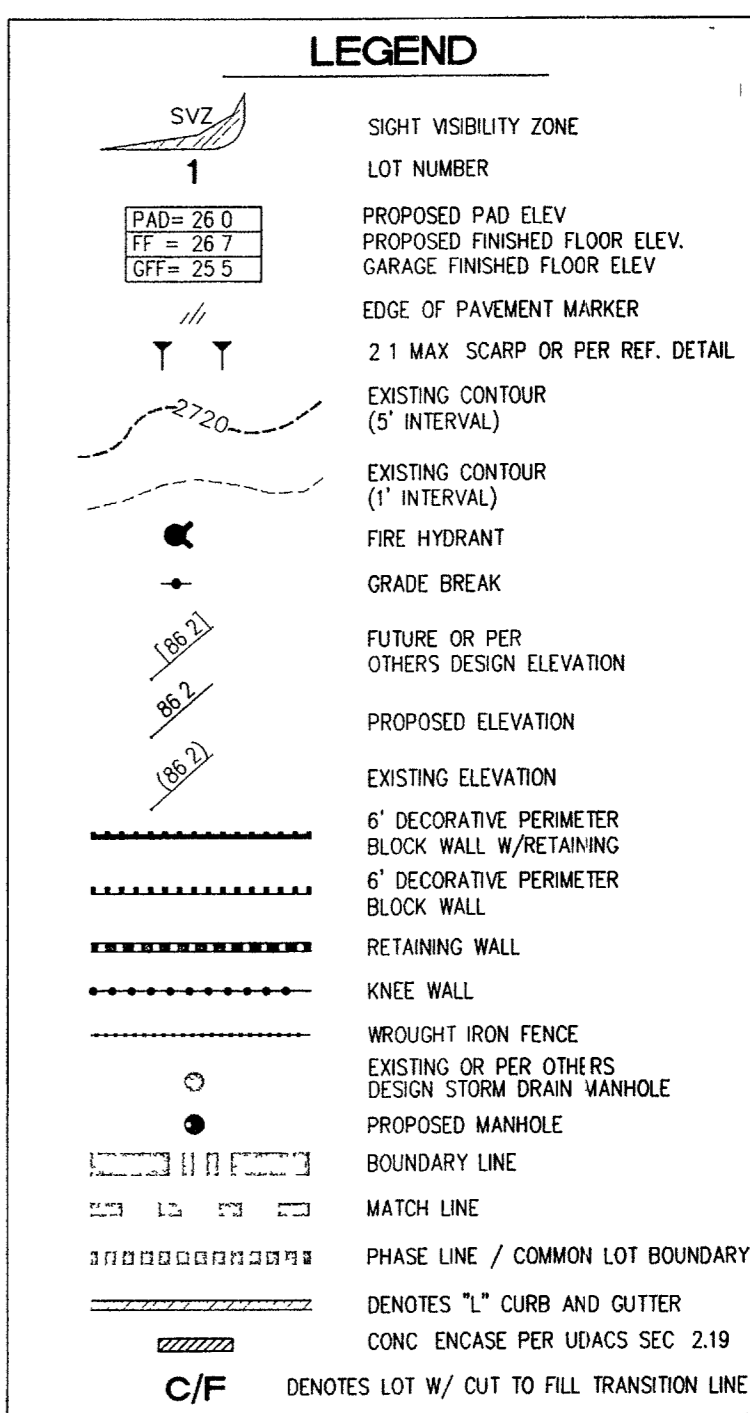
APN: 125-18-201-010
UNDEVELOPED

U.S.A.
APN: 125-18-201-010
UNDEVELOPED



- LIST OF ABBREVIATIONS**
- AC ASPHALTIC CONCRETE
 - CL CENTER LINE
 - FG FINISH GRADE
 - FL FLOW LINE
 - GB GRADE BREAK
 - HP HIGH POINT
 - LE LANDSCAPE EASEMENT
 - LF LINEAR FEET
 - LP LOW POINT
 - PAE PAD ACCESS EASEMENT
 - PC POINT OF CURVATURE
 - PRC POINT OF REVERSE CURVE
 - PT POINT OF TANGENCY
 - PL PROPERTY LINE
 - R/W RIGHT OF WAY
 - R/W RIGHT OF WAY
 - STA STATION
 - TC TOP OF CURB
 - TF TOP OF FOOTING
 - TDF TOP DECOR. WALL FOOTING
 - TRW TOP OF RETAINING WALL
 - VC VERTICAL CURVE

- NOTES**
- 1 SECTION 2 OF THE CLARK COUNTY BUILDING OFFICE OPERATIONS DIVISION DRAINAGE COMPLIANCE REF. INT. MUST BE COMPLETED BY THE ENGINEER AND SUBMITTED TO DEVELOPMENT SERVICES INSPECTION SCHEDULING FOR ALL WESTERN COLLECTION CHANNELS AND DRAINAGE EASEMENTS, PRIOR TO PAD GRADING INSPECTIONS FOR THE ENTIRE SITE.
 - 2 ROW FOR JENSEN STREET AND VIA PROVENZA AVENUE SHALL BE VACATED BY VS-0948-04
 - 3 CONSTRUCT ALL STREET INTERSECTIONS PER CCAUSD #225
 - 4 REF SOLS REPORT BY OWENS, NO E-04-296, DATED 10/11/04



- CONSTRUCTION NOTES**
- 1 CONSTRUCT 8" WIDE CROSS GUTTER PER DETAIL CCAUSD #228 (SEE DETAIL ON SHEET D-2)
 - 2 CONSTRUCT 4" WIDE BY 4" THICK SIDEWALK PER CCAUSD #234
 - 3 CONSTRUCT SIDEWALK RAMPS USING ARMOR TILE TRUNCATED DOMES OR EQUIVALENT PER CCAUSD #235, CASE I
 - 4 CONSTRUCT ROLL CURB PER DETAIL CCAUSD #217A
 - 5 CONSTRUCT "L" TYPE CURB PER CCAUSD #216
 - 6 CONSTRUCT 2" AC ON 4" TYPE II A/B ON 6" TYPE I OR NATIVE, SEE SECTION "C", SHEET D-1
 - 7 SAWCUT, REMOVE AND REPLACE EXISTING PAVEMENT PER PROP. STREET SECTION
 - 8 CONSTRUCT 10" TRANSITION FROM ROLL CURB TO "L" CURB SEE DETAIL "X", SHEET D-2
 - 9 CONSTRUCT 5" WIDE BY 4" THICK SIDEWALK PER CCAUSD #234
 - 10 CONTRACTOR TO VERIFY ELEV. OF EXIST. CURB AND GUTTER, PRINT, STORM DRAIN, RETAINING WALL ELEVATIONS, AND SDWK. PRIOR TO CONST. NOTIFY ENGINEER OF ANY CONFLICTS
 - 14 CONST. SIDEWALK UNDERDRAIN PER CCAUSD NO. 236
 - 15 CONST. "A" TYPE MEDIAN CURB PER CCAUSD #219
 - 16 CONST. DEPRESSION CURB PER CCAUSD #227
 - 17 CONST. BLOCK WALL OPENING PER SECTION "C", SHEET D-4
 - 18 CONST. 4" AC ON 4" TYPE II A/B ON 9" TYPE I, SEE SECTION "A", SHEET D-1
 - 19 CONST. 4" AC ON 4" TYPE II A/B ON 9" TYPE I, SEE SECTION "G", SHEET D-3
 - 20 CONST. 4" AC ON 4" TYPE II A/B ON 9" TYPE I, SEE SECTION "E", SHEET D-1
 - 21 CONST. 3" AC ON 9" TYPE II A/B, SEE SECTION "B", SHEET D-1
 - 22 CONST. 3" AC ON 9" TYPE II A/B, SEE SECTION "B", SHEET D-3
 - 23 CONSTRUCT CONC. CUTOFF WALL PER SECTION "C", SHEET D-3
 - 24 CONCRETE ENCASEMENT PER UDACS SEC. 2.19
 - 25 CONST. BLOCK WALL OPENING PER DETAIL "D" ON SHT. D-6

BENCHMARK
BENCHMARK FOUND CITY OF LAS VEGAS RIVET AND ROUND PLATE IN CONCRETE CYLINDER, SOUTHEAST CORNER OF ELKHORN HT. AND CONDUSTADOR ST
BM NO. 66 STATION 8L9V0 19NNW6 ELEVATION = 2803.77 (NAVD 88)

BASIS OF BEARING
THE BASIS OF BEARING FOR THIS SURVEY IS BASED ON THE FOUND AND HELD MONUMENTS MARKING THE SOUTHERLY LINE OF THE SOUTHWEST QUARTER (SW1/4) OF THE SOUTHEAST QUARTER (SE1/4) OF SECTION 13, T19S, R66E, MDM, CLARK COUNTY, NEVADA PER RECORD OF SURVEY BOOK 123, PAGE 32, CLARK COUNTY RECORDER'S OFFICE AS SOUTH 88°46'46" EAST

FLOOD ZONE NOTE
THE PROJECT AREA IS LOCATED WITHIN A FEMA ZONE X PER FLOOD INSURANCE RATE MAP PLAN 32003C1745E, DATED SEPTEMBER 27, 2002

- EASEMENT NOTES**
- 1 37" DRAINAGE EASEMENT, LVWD WATER EASEMENT, PUBLIC UTILITY EASEMENT (TO BE MAINTAINED BY H.O.A.) AND CLV PUBLIC SEWER EASEMENT
 - 2 20" DRAINAGE EASEMENT (TO BE MAINTAINED BY H.O.A.) AND CLV PUBLIC SEWER EASEMENT
 - 3 DRAINAGE EASEMENT TO BE PRIVATELY MAINTAINED BY H.O.A. (SEE DIMENSION ON PLAN FOR EASEMENT WIDTH)

DROP INLET NOTE
1 PROVIDE STANDARD MANHOLE STEPS TO ALL TYPE "CM" DROP INLETS PER CCAUSD DWG. NO. 410

Avoid cutting underground utility lines. It's costly.
Call before you Dig.
1-800-227-2600
UNDERGROUND SERVICE (USA)

Avoid hitting overhead power lines. It's costly.
CALL BEFORE YOU DO OVERHEAD
1-702-227-2929

Call before you UnderGround
1-702-455-7511
1-702-229-6611
US DOT AND CALIFORNIA STATE DOT

CLARK COUNTY DEPARTMENT OF DEVELOPMENT SERVICES
ACCEPTANCE OF PLANS FOR FILING
BY *Jacob B. Shaw* 6/27/05
TODD J. STEADHAM
Exp. 06/30/2006
CIVIL ENGINEER
NO. 15292
NOTE: POWER POLES AND/OR OTHER EXISTING FACILITIES NOT IN PROPER LOCATION BASED ON PROPOSED IMPROVEMENTS SHOWN HEREON WILL BE RELOCATED AT NO EXPENSE TO CLARK COUNTY

SVZ NOTES
1 NO STRUCTURE, VEGETATION OR OBJECT OF ANY KIND IS PERMITTED OVER TWENTY-FOUR (24) INCHES IN HEIGHT (MEASURED FROM THE TOP OF THE ADJACENT CURB IF CURB EXISTS) WITHIN THE SIGHT VISIBILITY ZONES

MATCHLINE SEE SHEET G-1

MATCHLINE SEE SHEET G-4

SLATER HANIFAN GROUP
CONSULTING ENGINEERS & PLANNERS
5740 S. ARVILLE STREET #216, LAS VEGAS, NV 89118
PHONE (702) 284-5500 FAX (702) 284-5399

APP. DATE	DESCRIPTION	NO.
6/27/05	REVISED LOT LAYOUT AND KEY MAP	1

CLARK COUNTY, NEVADA
PINNACLE HOMES
SABLE CREEK
GRADING PLAN II

SECTION 18
TOWNSHIP 19 SOUTH
RANGE 60 EAST, M.D.M.
DATE: 06/20/05
DRAFTER: JR/JB/DB
DESIGNER: TS/JB/DB
CHECKED: TS
PROJECT NO.
PIN0402-001

G-2
SHEET 33 OF 44
CLV DWG #3071V930
CC#TE# 05-7995

File: J:\PIN0402-001\Drawings\mxd\mxd\ENR0402-001.dwg, Jun 20, 2005, 13:41

81760 Rlgm 92.136