

**PROFILE**  
 HOR. : 1"=40'  
 VERT. : 1"=4'

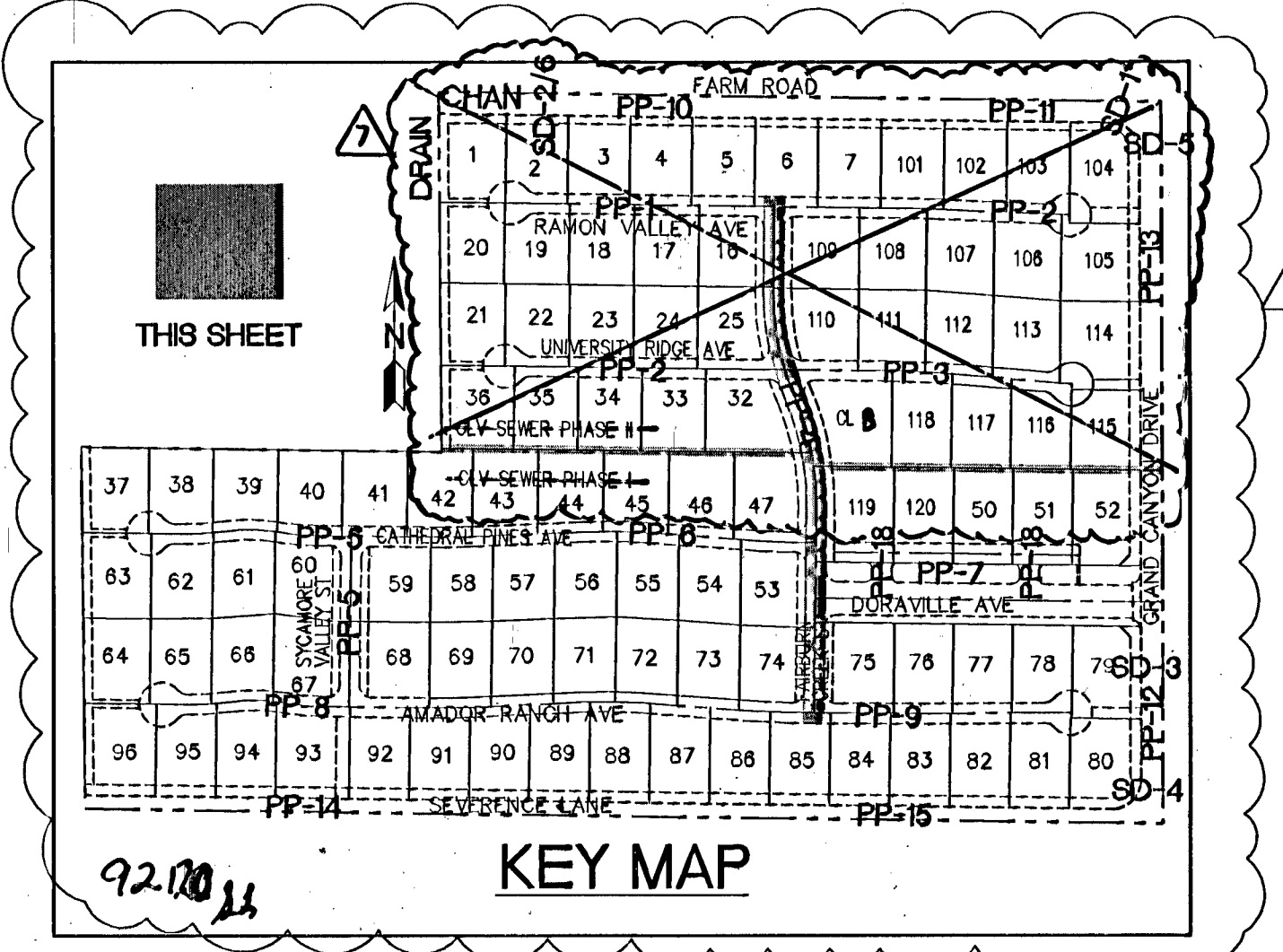
- CONSTRUCTION NOTES**
- CONSTRUCT 6" WIDE GROSS GUTTER PER DETAIL CCAUSD #228. (SEE DETAIL ON SHEET D-2)
  - CONSTRUCT 4" WIDE BY 4" THICK SIDEWALK PER CCAUSD #234.
  - CONSTRUCT SIDEWALK RAMP USING ARMOR TILE TRUNCATED DOMES OR EQUIVALENT PER CCAUSD #235, CASE 1.
  - CONSTRUCT ROLL CURB PER DETAIL CCAUSD #217A
  - CONSTRUCT "L" TYPE CURB PER CCAUSD #216.
  - CONSTRUCT 2" AC ON 4" TYPE II A.B. ON 6" TYPE I OR NATIVE. SEE SECTION "C", SHEET D-1.
  - SANDWICH, REMOVE AND REPLACE EXISTING PAVEMENT PER PROP. STREET SECTION.
  - CONSTRUCT 10' TRANSITION FROM ROLL CURB TO "L" CURB. SEE DETAIL "X", SHEET D-2.
  - CONSTRUCT 5' WIDE BY 4" THICK SIDEWALK PER CCAUSD #234
  - CONTRACTOR TO VERIFY ELEV. OF EXIST. CURB AND GUTTER, P.M.T., STORM DRAIN, RETAINING WALL ELEVATIONS, AND SWIM. PRIOR TO CONST. NOTIFY ENGINEER OF ANY CONFLICTS.
  - CONST. SIDEWALK UNDERDRAIN PER CCAUSD NO. 236
  - CONST. "A" TYPE MEDIAN CURB PER CCAUSD #219
  - CONST. DEPRESSED CURB PER CCAUSD #227
  - CONST. BLOCK WALL OPENING PER SECTION "C", SHEET D-4.
  - CONST. 4" AC ON 4" TYPE II A.B. ON 9" TYPE I, SEE SECTION "A", SHEET D-1.
  - CONST. 4" AC ON 4" TYPE II A.B. ON 9" TYPE I, SEE SECTION "C", SHEET D-3.
  - CONST. 4" AC ON 4" TYPE II A.B. ON 9" TYPE I, SEE SECTION "E", SHEET D-1.
  - CONST. 3" AC ON 9" TYPE II A.B., SEE SECTION "B", SHEET D-1.
  - CONST. 3" AC ON 9" TYPE II A.B., SEE SECTION "B", SHEET D-3.
  - CONSTRUCT CONC. CUTOFF WALL PER SECTION "C", SHEET D-3.
  - CONCRETE ENCASMENT PER UDACS SEC. 2.19
  - CONST. BLOCK WALL OPENING PER DETAIL "D" ON SHT. D-5.

**CENTRIE LINE CURVE TABLE**

CURVE	LENGTH	RADIUS	DELTA	TANGENT
C127	148.50	401.50	173°59'	74.90
C128	50.24	481.50	55°54'	25.14
C129	214.25	518.50	23°40'32"	108.68
C141	58.31	1000.00	3°20'28"	29.16

**BACK OF CURB CURVE TABLE**

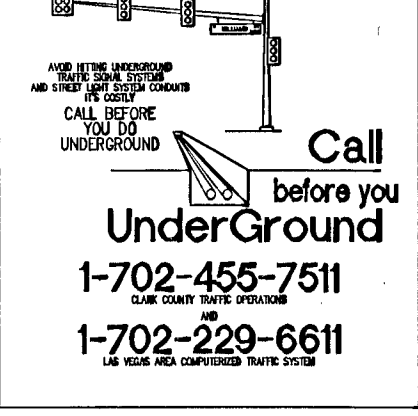
CURVE	LENGTH	RADIUS	DELTA	TANGENT
C142	31.42	20.00	90°00'52"	20.01
C143	28.50	20.00	75°54'24"	15.60
C144	39.41	20.00	112°53'17"	30.16
C158	31.41	20.00	89°59'08"	19.99
C159	104.35	500.00	115°27'28"	52.37
C160	35.60	20.00	101°58'22"	24.69
C164	24.15	20.00	69°10'28"	13.79
C165	24.87	493.00	2°31'01"	12.44
C166	208.61	500.00	23°40'32"	104.80
C167	31.42	20.00	90°00'00"	20.00
C168	57.23	981.50	3°20'28"	28.63
C184	59.39	1018.50	3°20'28"	29.70
C185	31.41	20.00	89°59'41"	20.00
C198	59.39	1018.50	3°20'28"	29.70
C202	31.46	20.00	90°00'55"	20.05
C203	31.42	20.00	90°00'19"	20.00
C204	57.23	981.50	3°20'28"	28.63
C208	113.82	463.00	14°05'06"	57.20
C209	214.57	537.00	22°53'37"	108.74
C210	31.41	20.00	89°59'41"	20.00
C213	7.85	5.00	90°00'00"	5.00
C214	7.85	5.00	90°00'19"	5.00
C220	31.42	20.00	90°00'19"	20.00
C225	25.13	8.00	180°00'00"	-



- EASEMENT NOTES**
- 37' DRAINAGE EASEMENT, LAND WATER EASEMENT, PUBLIC UTILITY EASEMENT (TO BE MAINTAINED BY H.O.A.) AND CLV PUBLIC SEWER EASEMENT.
  - 20' DRAINAGE EASEMENT (TO BE MAINTAINED BY H.O.A.) AND CLV PUBLIC SEWER EASEMENT.
  - DRAINAGE EASEMENT TO BE PRIVATELY MAINTAINED BY H.O.A. (SEE DIMENSION ON PLAN FOR EASEMENT WIDTH)



Avoid cutting underground utility lines. It's costly.  
**Call before you Dig.**  
 1-800-227-2600  
 UNDERGROUND SERVICE (USA)



**BENCHMARK**  
 BENCHMARK FOUND CITY OF LAS VEGAS RIVET AND ROUND PLATE IN CONCRETE CYLINDER, SOUTHEAST CORNER OF ELKHORN RD. AND CONQUASTADOR ST.  
 BM NO. 66. STATION 8LV90 19NNW6 ELEVATION = 2803.77 (NAVD 88)

**BASIS OF BEARING**  
 THE BASIS OF BEARINGS FOR THIS SURVEY IS BASED ON THE FOUND AND HELD MONUMENTS MARKING THE SOUTHERLY LINE OF THE SOUTHWEST QUARTER (SW1/4) OF THE SOUTHEAST QUARTER (SE1/4) OF SECTION 13, T19S, R16E, N10M, CLARK COUNTY, NEVADA PER RECORD OF SURVEY BOOK 123, PAGE 32, CLARK COUNTY RECORDER'S OFFICE AS SOUTH 88°46'48" EAST.

CLARK COUNTY DEPARTMENT OF DEVELOPMENT SERVICES ACCEPTANCE OF PLANS FOR FILING

BY \_\_\_\_\_

ACCEPTANCE OF THESE PLANS FOR FILING SHALL NOT BE CONSTRUED TO BE A PERMIT FOR OR AN APPROVAL OF ANY VIOLATION OF ANY OF THE PROVISIONS OF THE STATE OR COUNTY LAWS AND/OR SPECIFICATIONS CLARK COUNTY SHALL BE HELD FREE FROM DAMAGES WHICH MAY RESULT FROM THE CONSTRUCTION OF THE IMPROVEMENTS FROM THE ENGINEERING DESIGN DEPICTED HEREIN.

NOTE: POWER POLES AND/OR OTHER EXISTING FACILITIES NOT IN PROPER LOCATION BASED ON PROPOSED IMPROVEMENTS SHOWN HEREIN WILL BE RELOCATED AT NO EXPENSE TO CLARK COUNTY.

**SLATER HANIFAN GROUP**  
**SIG**  
 CONSULTING ENGINEERS & PLANNERS  
 5740 S. ARVILLE STREET #216, LAS VEGAS, NV 89118  
 PHONE (702) 284-5300 FAX (702) 284-5399

NO.	DESCRIPTION	DATE	BY	APP.
1	REVISED EASEMENT LINE	10/12/05	DMB	
2	REVISED LOT LAYOUT, SMC, WTR. CURVE	04/10/06	DMB	
3	TABLE AND NET MAP	04/10/06	DMB	
4	REMOVED CLV PHASE II SMC	4/26/09	DMB	

SECTION 18  
 TOWNSHIP 19 SOUTH  
 RANGE 60 EAST, N.M.L.

CLARK COUNTY, NEVADA

**PINNACLE HOMES**  
**SABLE CREEK**  
**FAIRBURN CREEK ST PLAN AND PROFILE**

DATE: 07/07/05  
 DRAFTER: DMB  
 DESIGNER: DMB  
 CHECKED: JTS  
 PROJECT NO. PIN0402-001

**PROFESSIONAL ENGINEER STATE OF NEVADA**  
 TODD J. STEADHAM  
 CIVIL  
 LICENSE NO. 15291

**PP-4**  
 SHEET 17 OF 44  
 CLV DWG # 307V930  
 CC RTE# 05-7995

File: J:\P\0402-001\Drawings\05-PP-4.dwg Date: 07/07/05 16:25