

PROFILE
 HOR. : 1"=40'
 VERT. : 1"=4'

- CONSTRUCTION NOTES**
- CONSTRUCT 8' WIDE CROSS CUTTER PER DETAIL CCAUSD #228. (SEE DETAIL ON SHEET D-2)
 - CONSTRUCT 4' WIDE BY 4" THICK SIDEWALK PER CCAUSD #234.
 - CONSTRUCT SIDEWALK RAMPS USING ARMOR TILE TRUNCATED DOMES OR EQUIVALENT PER CCAUSD #235, CASE I.
 - CONSTRUCT ROLL CURB PER DETAIL CCAUSD #217A.
 - CONSTRUCT "L" TYPE CURB PER CCAUSD #218.
 - CONSTRUCT 2" AC ON 4" TYPE II A.B. ON 6" TYPE I OR NATIVE. SEE SECTION "C", SHEET D-1.
 - SAW-CUT, REMOVE AND REPLACE EXISTING PAVEMENT PER PROP. STREET SECTION.
 - CONSTRUCT 10' TRANSITION FROM ROLL CURB TO "L" CURB. SEE DETAIL "X", SHEET D-2.
 - CONSTRUCT 5' WIDE BY 4" THICK SIDEWALK PER CCAUSD #234.
 - CONTRACTOR TO VERIFY ELEV. OF EXIST. CURB AND GUTTER, P.M.T., STORM DRAIN, RETAINING WALL ELEVATIONS, AND SDWK. PRIOR TO CONST. NOTIFY ENGINEER OF ANY CONFLICTS.
 - CONST. SIDEWALK UNDERDRAIN PER CCAUSD NO. 236.
 - CONST. "A" TYPE MEDIAN CURB PER CCAUSD #219.
 - CONST. DEPRESSIONED CURB PER CCAUSD #227.
 - CONST. BLOCK WALL OPENING PER SECTION "C", SHEET D-4.
 - CONST. 4" AC ON 4" TYPE II A.B. ON 9" TYPE I, SEE SECTION "A", SHEET D-1.
 - CONST. 4" AC ON 4" TYPE II A.B. ON 9" TYPE I, SEE SECTION "B", SHEET D-3.
 - CONST. 4" AC ON 4" TYPE II A.B. ON 9" TYPE I, SEE SECTION "E", SHEET D-1.
 - CONST. 3" AC ON 9" TYPE II A.B., SEE SECTION "B", SHEET D-1.
 - CONST. 3" AC ON 9" TYPE II A.B., SEE SECTION "B", SHEET D-3.
 - CONSTRUCT CONC. CUTOFF WALL PER SECTION "C", SHEET D-3.
 - CONCRETE ENCASUREMENT PER UDACS SEC. 2.19.
 - CONST. BLOCK WALL OPENING PER DETAIL "D" ON SHT. D-8.

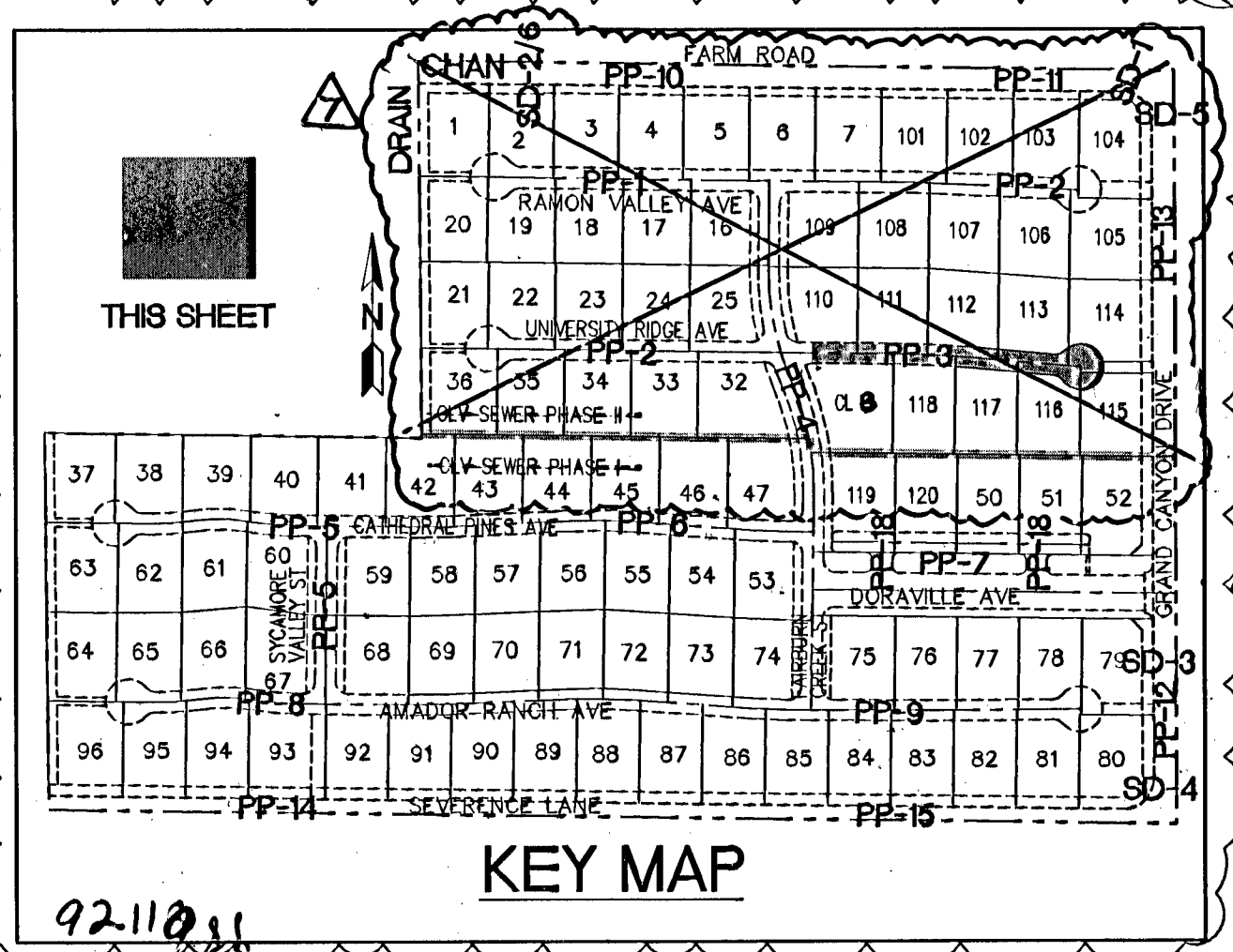
APPROVED FOR CONSTRUCTION *1st. App'd 7-11-05*
 LAS VEGAS VALLEY WATER DISTRICT
 PROJECT # H108887

- EASEMENT NOTES**
- 37' DRAINAGE EASEMENT, LVWD WATER EASEMENT, PUBLIC UTILITY EASEMENT (TO BE MAINTAINED BY H.O.A.) AND CLV PUBLIC SEWER EASEMENT.
 - 20' DRAINAGE EASEMENT (TO BE MAINTAINED BY H.O.A.) AND CLV PUBLIC SEWER EASEMENT.
 - DRAINAGE EASEMENT TO BE PRIVATELY MAINTAINED BY H.O.A. (SEE DIMENSION ON PLAN FOR EASEMENT WIDTH)

BENCHMARK
 BENCHMARK: FOUND CITY OF LAS VEGAS RIVET AND ROUND PLATE IN CONCRETE CYLINDER, SOUTHEAST CORNER OF ELKHORN RD. AND CONQUISTADOR ST.
 BM NO. 68. STATION 8LV90 19N98W ELEVATION = 2803.77 (NAVD 88)

BASIS OF BEARING
 THE BASIS OF BEARINGS FOR THIS SURVEY IS BASED ON THE FOUND AND HELD MONUMENTS MARKING THE SOUTHERLY LINE OF THE SOUTHWEST QUARTER (SW/4) OF THE SOUTHWEST QUARTER (SE1/4) OF SECTION 13, T19S, R98E, W04M, CLARK COUNTY, NEVADA PER RECORD OF SURVEY BOOK 123, PAGE 32, CLARK COUNTY RECORDER'S OFFICE AS SOUTH 88°46'48" EAST.

CLARK COUNTY DEPARTMENT OF DEVELOPMENT SERVICES
 ACCEPTANCE OF PLANS FOR FILING
 BY: _____
 ACCEPTANCE OF THESE PLANS FOR FILING SHALL NOT BE CONSTRUED TO BE A PERMIT FOR OR AN APPROVAL OF ANY VIOLATION OF ANY OF THE PROVISIONS OF THE STATE OR COUNTY LAWS AND/OR SPECIFICATIONS CLARK COUNTY SHALL BE HELD FREE FROM DAMAGES WHICH MAY RESULT FROM THE CONSTRUCTION OF THE IMPROVEMENTS FROM THE ENGINEERING DESIGN DEPICTED HEREIN.
 NOTE: POWER POLES AND/OR OTHER EXISTING FACILITIES NOT IN PROPER LOCATION BASED ON PROPOSED IMPROVEMENTS/SHOWN WILL BE RELOCATED AT NO EXPENSE TO CLARK COUNTY



CENTERLINE CURVE TABLE

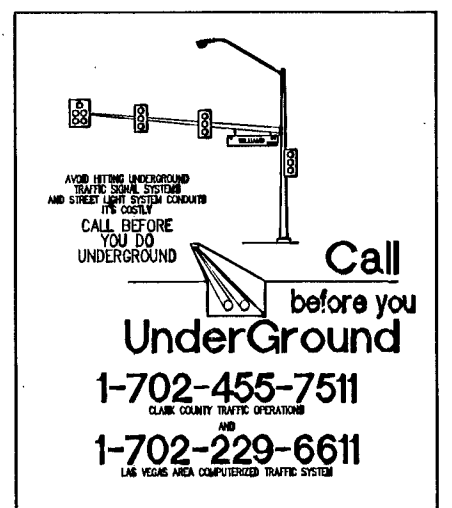
CURVE	LENGTH	RADIUS	DELTA	TANGENT
C235	148.01	2000.00	41°24'	74.04

BACK OF CURB CURVE TABLE

CURVE	LENGTH	RADIUS	DELTA	TANGENT
C150	148.38	2018.50	41°24'	74.72
C151	148.64	1981.50	41°24'	73.35
C152	17.62	20.00	50°28'44"	8.43
C153	198.60	40.50	289°57'57"	33.41
C154	17.62	20.00	50°28'44"	8.43



Call before you Dig.
 1-800-227-2600
 UNDERGROUND SERVICE (USA)



Call before you Dig UnderGround
 1-702-455-7511
 1-702-229-6611

SLATER HANIFAN GROUP
 CONSULTING ENGINEERS & PLANNERS
 5740 S. ARVILLE STREET #216, LAS VEGAS, NV 89118
 PHONE (702) 284-5300 FAX (702) 284-5389

NO.	DESCRIPTION	DATE	BY	APP.
1	REMOVED ABBY SPRINGS CT. ADDED UNIVERSITY RIDGE CT WITH NEW LOT LAYOUT AND REVISION NET MAP	04/10/06	DMB	[Signature]
2	REVISION: CALL NUMBER CHANGE	07/07/06	JTS	[Signature]

CLARK COUNTY, NEVADA
PINNACLE HOMES
 SABLE CREEK
 UNIVERSITY RIDGE AVE STA 9+00 TO 16+00
 PLAN AND PROFILE

SECTION 18
 TOWNSHIP 19 SOUTH
 RANGE 60 EAST, NDM
 DATE: 07/07/05
 DRAFTER: DMB
 DESIGNER: DMB
 CHECKED: JTS
 PROJECT NO.
 PINO402-001
PP-3
 SHEET 16 OF 44
 CLV DWG # 307V930
 CC HIE# 05-7953