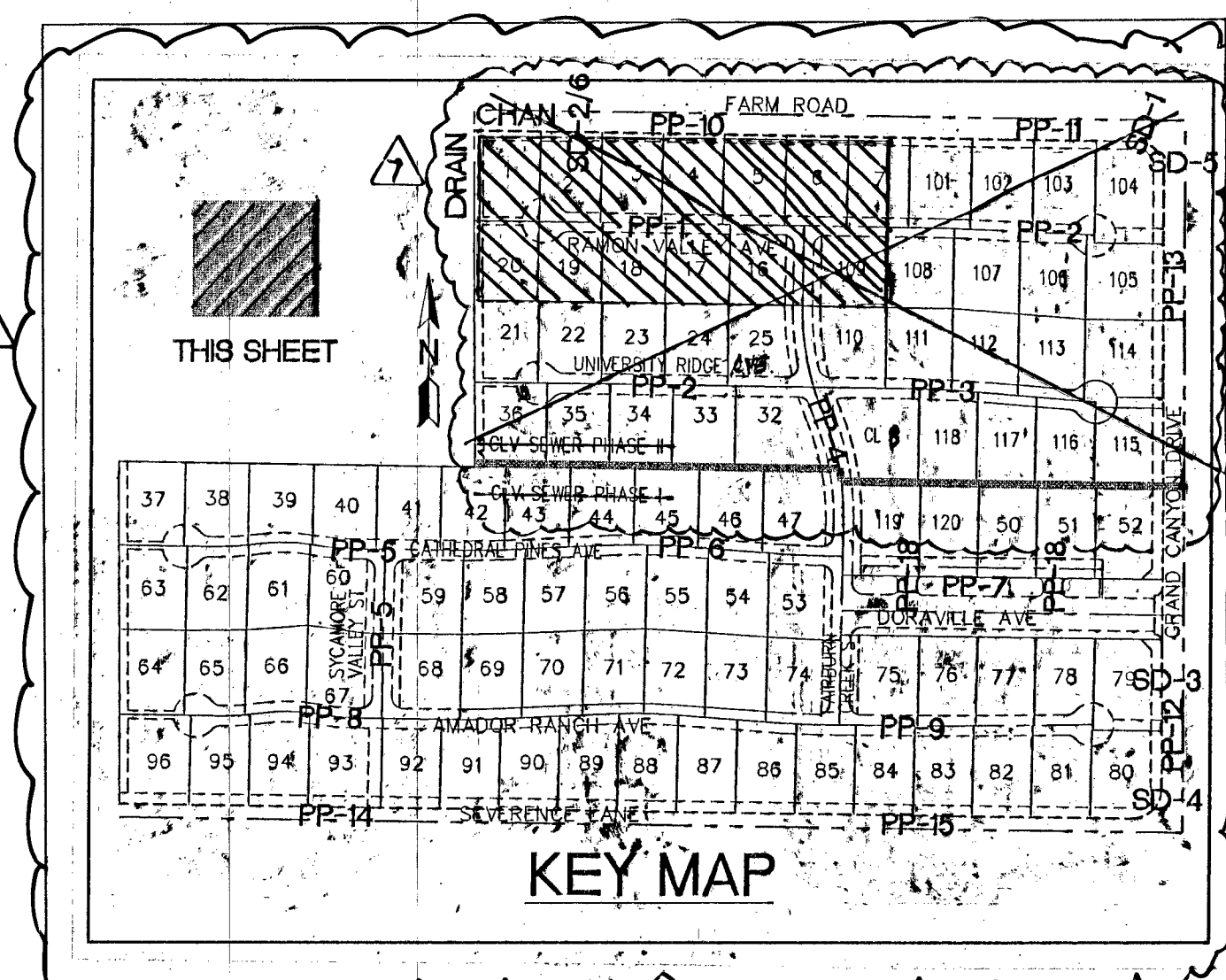


PROFILE

HOR. : 1" = 40'
VERT. : 1" = 4'



CONSTRUCTION NOTES

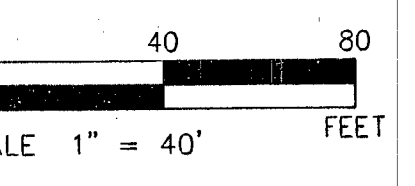
1. CONSTRUCT 8" WIDE CROSS GUTTER PER DETAIL CCAUSD. #228. (SEE DETAIL ON SHEET D-2)
2. CONSTRUCT 4" WIDE BY 4" THICK SIDEWALK PER CCAUSD. #234.
3. CONSTRUCT SIDEWALK RAMPS USING ARMOR TILE TRUNCATED DOMES OR EQUIVALENT PER CCAUSD #235, CASE I.
4. CONSTRUCT ROLL CURB PER DETAIL CCAUSD #217A
5. CONSTRUCT "L" TYPE CURB PER CCAUSD. #216.
6. CONSTRUCT 2" AC ON 4" TYPE II A.B. ON 6" TYPE I OR NATIVE, SEE SECTION "C", SHEET D-1.
7. SIMULT. REMOVE AND REPLACE EXISTING PAVEMENT PER PROP. STREET SECTION.
8. CONSTRUCT 10" TRANSITION FROM ROLL CURB TO "L" CURB. SEE DETAIL "X", SHEET D-2.
9. CONSTRUCT 5" WIDE BY 4" THICK SIDEWALK PER CCAUSD. #234
10. CONTRACTOR TO VERIFY ELEV. OF EXIST. CURB AND GUTTER, POINT, STORM DRAIN, RETAINING WALL ELEVATIONS, AND SDWK. PRIOR TO CONST. NOTIFY ENGINEER OF ANY CONFLICTS.
14. CONST. SIDEWALK UNDERDRAIN PER CCAUSD NO. 236
15. CONST. "A" TYPE MEDIAN CURB PER CCAUSD #219
16. CONST. DEPRESSED CURB PER CCAUSD #227
17. CONST. BLOCK WALL OPENING PER SECTION "C", SHEET D-4.
18. CONST. 4" AC ON 4" TYPE II A.B. ON 9" TYPE I, SEE SECTION "A", SHEET D-1.
19. CONST. 4" AC ON 4" TYPE II A.B. ON 9" TYPE I, SEE SECTION "G", SHEET D-3.
20. CONST. 4" AC ON 4" TYPE II A.B. ON 9" TYPE I, SEE SECTION "E", SHEET D-1.
21. CONST. 3" AC ON 9" TYPE II A.B., SEE SECTION "B", SHEET D-1.
22. CONST. 3" AC ON 9" TYPE II A.B., SEE SECTION "B", SHEET D-3.
23. CONSTRUCT CONC. CUTOFF WALL PER SECTION "C", SHEET D-3.
24. CONCRETE ENCASUREMENT PER LDACS SEC. 2.19
25. CONST. BLOCK WALL OPENING PER DETAIL "D" ON SHT. D-6.

BACK OF CURB CURVE TABLE

CURVE	LENGTH	RADIUS	DELTA	TANGENT
C142	31.42	20.00	90°00'52"	20.01
C155	17.26	19.50	50°42'12"	9.24
C156	198.91	40.50	281°24'23"	33.15
C157	17.26	19.50	50°42'12"	9.24
C158	31.41	20.00	89°59'08"	19.99

EASEMENT NOTES

1. 37' DRAINAGE EASEMENT, LVVWD WATER EASEMENT, PUBLIC UTILITY EASEMENT (TO BE MAINTAINED BY H.O.A.) AND CLV PUBLIC SEWER EASEMENT.
2. DENOTES AREA TO BE COVERED BY EASEMENT CALLOUT.
3. 20' DRAINAGE EASEMENT (TO BE MAINTAINED BY H.O.A.) AND CLV PUBLIC SEWER EASEMENT.
4. DRAINAGE EASEMENT TO BE PRIVATELY MAINTAINED BY H.O.A. (SEE DIMENSION ON PLAN FOR EASEMENT WIDTH)



SCALE 1" = 40' FEET



SCALE 1" = 40' FEET

BENCHMARK
BENCHMARK FOUND CITY OF LAS VEGAS RIVET AND ROUND PLATE IN CONCRETE CYLINDER, SOUTHEAST CORNER OF ELKHORN RD. AND CONQUISTADOR ST.
BM NO. 66. STATION 8LV90 19N9W ELEVATION = 2803.77 (NAVD 88)

BASIS OF BEARING
THE BASIS OF BEARINGS FOR THIS SURVEY IS BASED ON THE FOUND AND HELD MONUMENTS MARKING THE SOUTHERLY LINE OF THE SOUTHWEST QUARTER (SW1/4) OF THE SOUTHEAST QUARTER (SE1/4) OF SECTION 13, T19S, R60E, MDM, CLARK COUNTY, NEVADA PER RECORD OF SURVEY BOOK 123, PAGE 32, CLARK COUNTY RECORDER'S OFFICE AS SOUTH 88°48'46" EAST.

CLARK COUNTY DEPARTMENT OF DEVELOPMENT SERVICES
ACCEPTANCE OF PLANS FOR FILING

BY:
ACCEPTANCE OF THESE PLANS FOR FILING SHALL NOT BE CONSTRUED TO BE A PERMIT FOR OR AN APPROVAL OF ANY VIOLATION OF ANY OF THE PROVISIONS OF THE STATE OR COUNTY LAWS AND/OR SPECIFICATIONS CLARK COUNTY SHALL BE HELD FREE FROM DAMAGES WHICH MAY RESULT FROM THE CONSTRUCTION OF THE IMPROVEMENTS FROM THE ENGINEERING DESIGN DEPICTED HEREIN.
NOTE: POWER POLES AND/OR OTHER EXISTING FACILITIES NOT IN PROPER LOCATION BASED ON PROPOSED IMPROVEMENTS SHOWN HEREON WILL BE RELOCATED AT NO EXPENSE TO CLARK COUNTY

S-I-G GROUP
SLATER HANIFAN GROUP
CONSULTING ENGINEERS & PLANNERS
5740 S. ARVILLE STREET #216, LAS VEGAS, NV 89118
PHONE (702) 284-5300 FAX (702) 284-5399

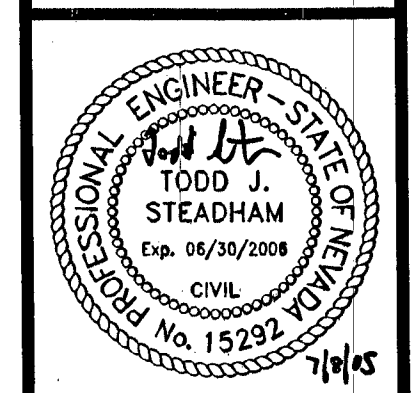
NO.	DESCRIPTION	DATE	BY	APP.
1	REVISED LIT. LIMIT, CURVE TABLE, KEY, MAP AND SWK.	4/10/06	JTS	JTS
2	REMOVED CLV PHASE II SWK.	4/26/09	JTS	JTS

CLARK COUNTY, NEVADA

PINNACLE HOMES
SABLE CREEK
RAMON VALLEY AVE PLAN AND PROFILE
STA 2+00 TO STA 10+50

SECTION 18
TOWNSHIP 19 SOUTH
RANGE 60 EAST, MDM

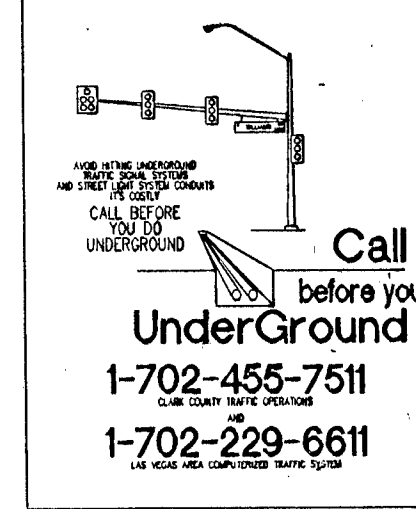
DATE: 07/07/05
DRAFTER: DMB
DESIGNER: DMB
CHECKED: JTS
PROJECT NO.
PIN0402-001



PP-1
SHEET 14 OF 44
CLV DWG #307930
CC THE# 05-7993



Call before you Dig.
1-800-227-2600
UNDERGROUND SERVICE (USA)



Call before you Dig.
1-702-455-7511
1-702-229-6611

81744 Elem 92-1178