

Call before you Dig.
1-800-227-2600
UNDERGROUND SERVICE UNIT

NOTE 1:
SEE SHEET 2 OF 43; GENERAL NOTE NO. 17 FOR UTILITY CROSSINGS.

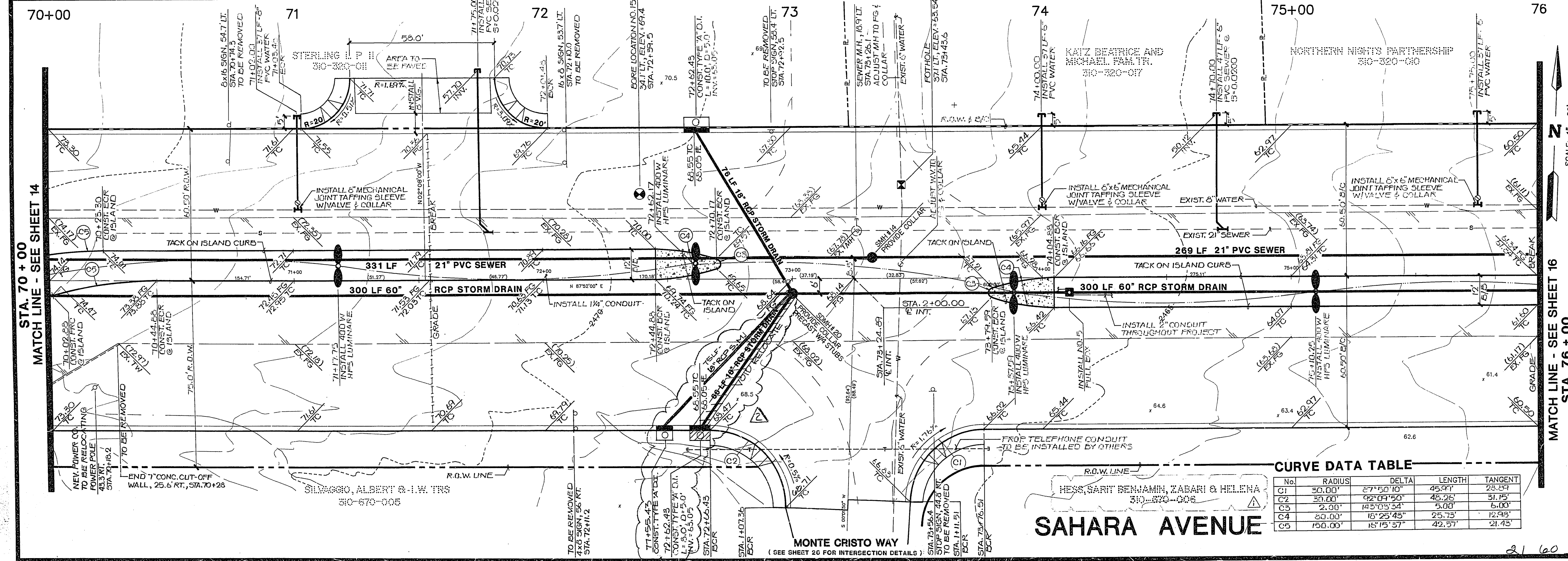
NOTE 2:
ALL FINISH GRADES OF ASPHALT SHALL BE FLUSH WITH LIP OF GUTTER. ADJUST EXISTING AND PROPOSED MANHOLES IN THE PAVEMENT AREA ACCORDINGLY.

REVISION

DATE	BY	REVISION
10-03-05	DVE	REVISED PER OWNER
07-03-04	O.F.	RELEASED 18\"/>

ES
ENGINEERS & ARCHITECTS, INC.
1000 S. DURANGO AVENUE, SUITE 200
DENVER, CO 80202
TEL: 303.733.8800
FAX: 303.733.8801
WWW.ES-ENGINEERS.COM

SUBMITTED BY: *[Signature]* 6/23/12



STA. 70 + 00
MATCH LINE - SEE SHEET 14

MATCH LINE - SEE SHEET 16
STA. 76 + 00

STREET & SEWER PLAN & PROFILE
(STA. 70+00 TO STA. 76+00)
PROJECT: S.I.D. 1427- SAHARA AVENUE (DURANGO DRIVE TO RAINBOW BOULEVARD)

W.O. #: 130-9520
BY: CHAO/BLOOM
DATE: 5/91
SCALE: VERT. 1"=4'
SCALE: HORIZ. 1"=20'

CURVE DATA TABLE

No.	RADIUS	DELTA	LENGTH	TANGENT
C1	50.00'	27°50'10"	45.09'	28.89'
C2	50.00'	92°09'50"	48.26'	31.15'
C3	2.00'	143°03'34"	5.00'	5.00'
C4	80.00'	16°25'45"	25.73'	12.98'
C5	150.00'	18°15'57"	49.57'	21.43'

SAHARA AVENUE
NEED SARTY BENJAMIN, ZABARI & HELENA
30-870-008

CLV. DRAWING NO. **15**
107-V-2036 **43**

21 603
"As Built" 107-V2036