

Call before you Dig.
 1-800-227-2600
 UNDERGROUND SERVICE (USA)

NOTE:
 SEE SHEET 2 OF 43, GENERAL NOTE No. 17 FOR UTILITY CROSSINGS.

NOTE:
 ALL FINISH GRADES OF AC PAVEMENT SHALL BE FLUSH WITH LIP OF GUTTER... ADJUST EXISTING AND PROPOSED MANHOLES IN THE PAVEMENT AREA ACCORDINGLY.

ADDITIONAL APPROVAL OF VALVED OUTLET (6" and larger)
 The water plans show one or more valved outlets extending out of paved areas. Installation of these outlets is acceptable, however, if the outlets are incorrectly located or not used for any reason when the property is actually developed, the developer shall abandon the outlets at the connection to the active main in accordance with the Director's standards and at the Developer's expense.

NOTE: APPROVAL OF THESE PLANS FOR THE WATER STUBOUT INSTALLATIONS WILL NOT BE CONSTRUED AS A COMMITMENT FOR WATER SERVICE TO THESE PROPERTIES.

REVISION

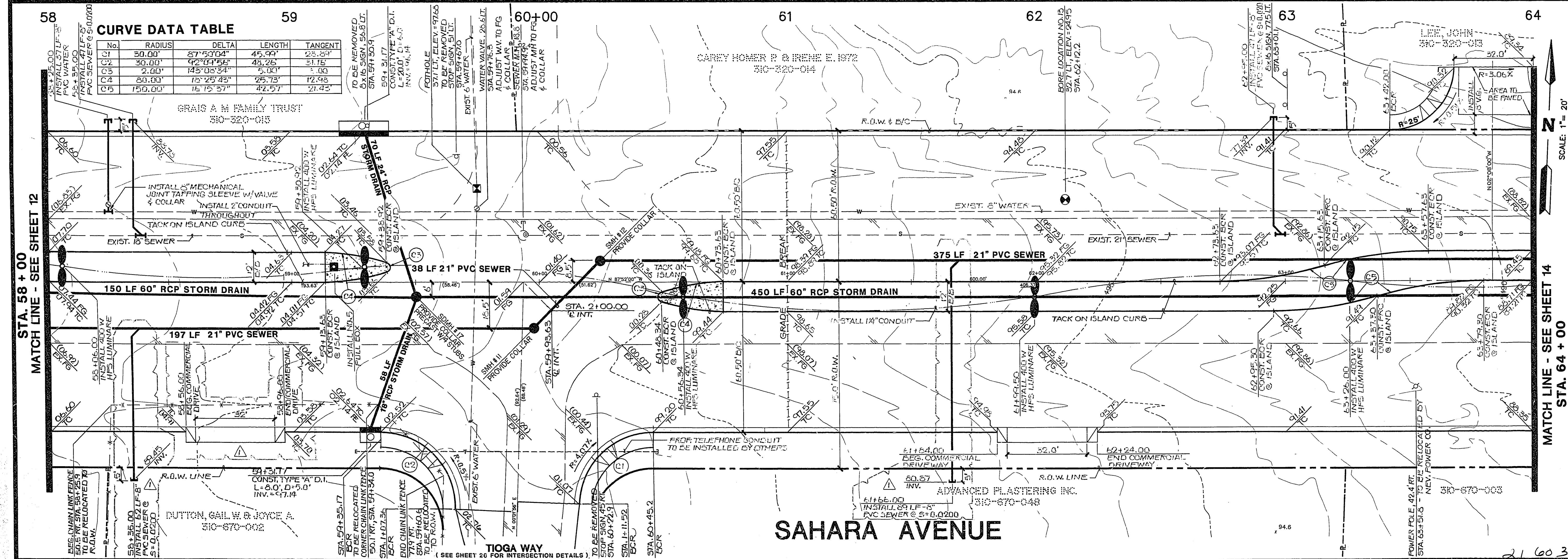
NO.	DATE	BY	DESCRIPTION
1	05-12-95	LAW	FILED PER LOCAL ORDER

DATE: 6/23/92

APPROVED BY: [Signature]

PROJECT: SAHARA AVENUE

DATE: 6/23/92



STREET & SEWER PLAN & PROFILE
 (STA. 58+00 TO STA. 64+00)

PROJECT: S.D. 1427- SAHARA AVENUE (DURANGO DRIVE TO RAINBOW BOULEVARD)

W.O. #: 130-9520
 BY: CHAO/BLOOM
 DATE: 5/91
 SCALE: VERT. 1"=4'
 HORIZ. 1"=20'

C.L.V. DRAWING NO. 13/43
 107-V-2036