

Call before you Dig.
1-800-227-2800
UNDERGROUND SERVICE (USA)

NOTE:
SEE SHEET 2 OF 43, GENERAL NOTE NO. 17 FOR UTILITY CROSSINGS.

NOTE:
ALL FINISH GRADES OF AC PAVEMENT SHALL BE FLUSH WITH LIP OF GUTTER. ADJUST EXISTING AND PROPOSED MANHOLES IN THE PAVEMENT AREA ACCORDINGLY.

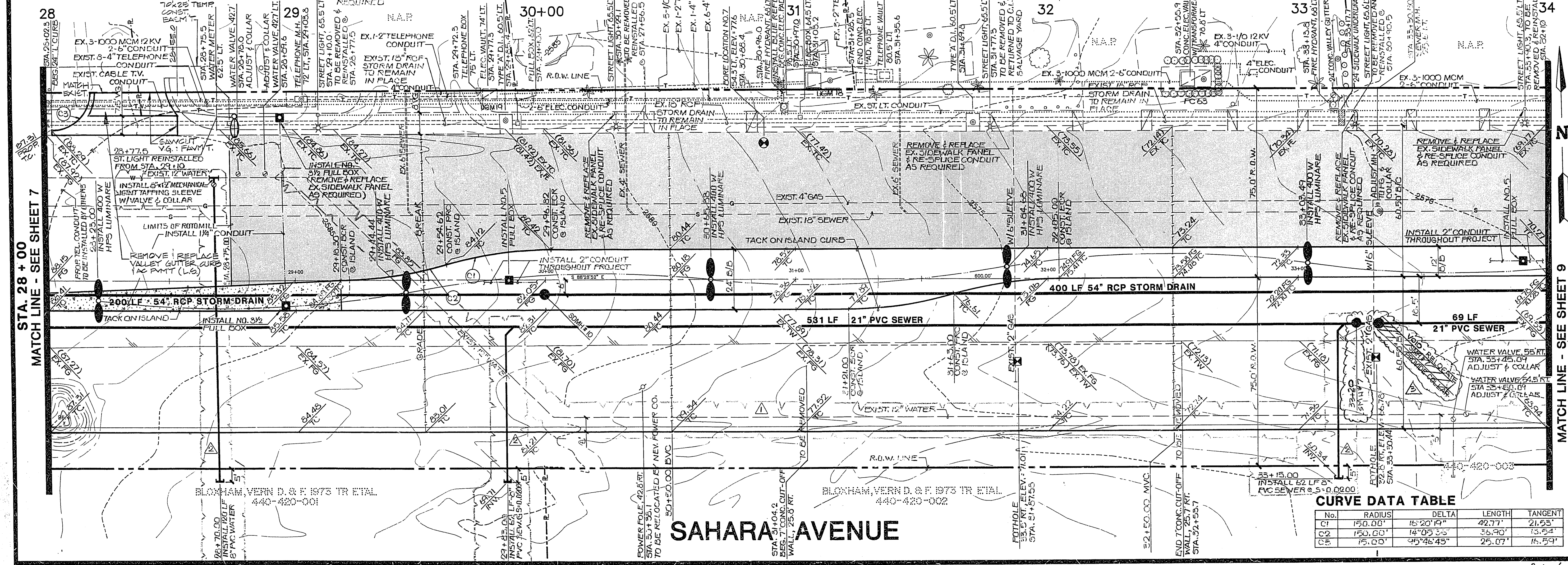
CONDITIONAL APPROVAL OF VALVED OUTLET (6\"/>

APPROVAL DATE: 01-05-98 BY: EWE
 02-05-98 BY: EWE
 03-05-98 BY: O.P.

ADD 500 LF EXIST. 12\"/>
 ADD 100 LF EXIST. 12\"/>
 ADD 100 LF EXIST. 12\"/>
 RELOCATED S.M.A. # 7

ES&S ENGINEERS & ARCHITECTS, INC.
 10000 S. DURANGO AVENUE, SUITE 200
 DENVER, CO 80231
 303-751-1100

SUBMITTED BY: [Signature]
 6/23/92



SAHARA AVENUE

CURVE DATA TABLE

No.	RADIUS	DELTA	LENGTH	TANGENT
C1	150.00'	15°20'19"	42.77'	21.25'
C2	150.00'	14°03'32"	35.94'	18.64'
C3	150.00'	45°46'45"	25.07'	15.59'

SCALE: 1" = 20'

STREET & SEWER PLAN & PROFILE
 (STA. 28+00 TO STA. 34+00)

S.I.D. 1427- SAHARA AVENUE
(DURANGO DRIVE TO RAINBOW BOULEVARD)

W.O. #: 130-9520
 BY: CHAO/BLOOM
 DATE: 5/91
 SCALE: VERT. 1" = 4'
 HORIZ. 1" = 20'

CL.V. DRAWING NO. **8**
 107-V-2036 **43**