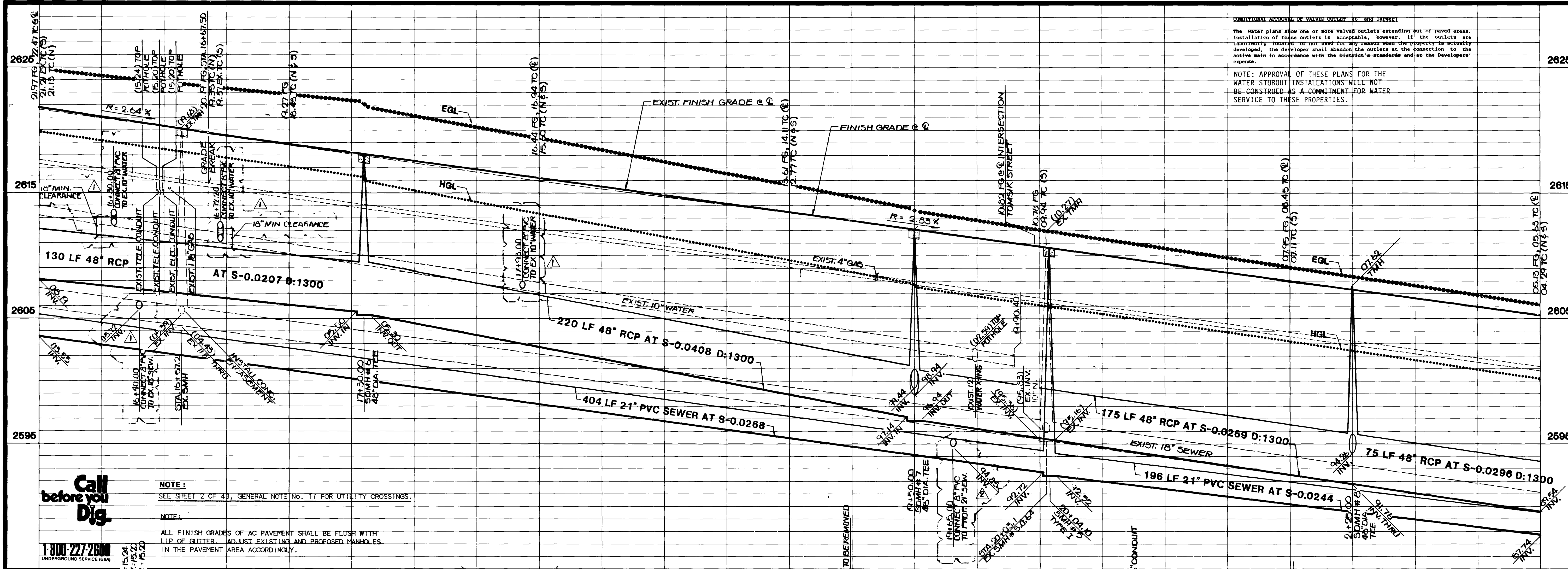


5-2-88



CONDITIONAL APPROVAL OF VALVE INSTALLATION 10-10-1984

The water plans show one or more valves outlets extending out of paved areas. Installation of these outlets is acceptable, however, if the outlets are incorrectly located or not used for any reason when the property is actually developed, the developer shall abandon the outlets at the connection to the active main in accordance with the District's standards and at the Developer's expense.

NOTE: APPROVAL OF THESE PLANS FOR THE WATER STUBOUT INSTALLATIONS WILL NOT BE CONSTRUED AS A COMMITMENT FOR WATER SERVICE TO THESE PROPERTIES.

Call before you Dig.

1-800-277-2688

NOTE: SEE SHEET 2 OF 43, GENERAL NOTE No. 17 FOR UTILITY CROSSINGS.

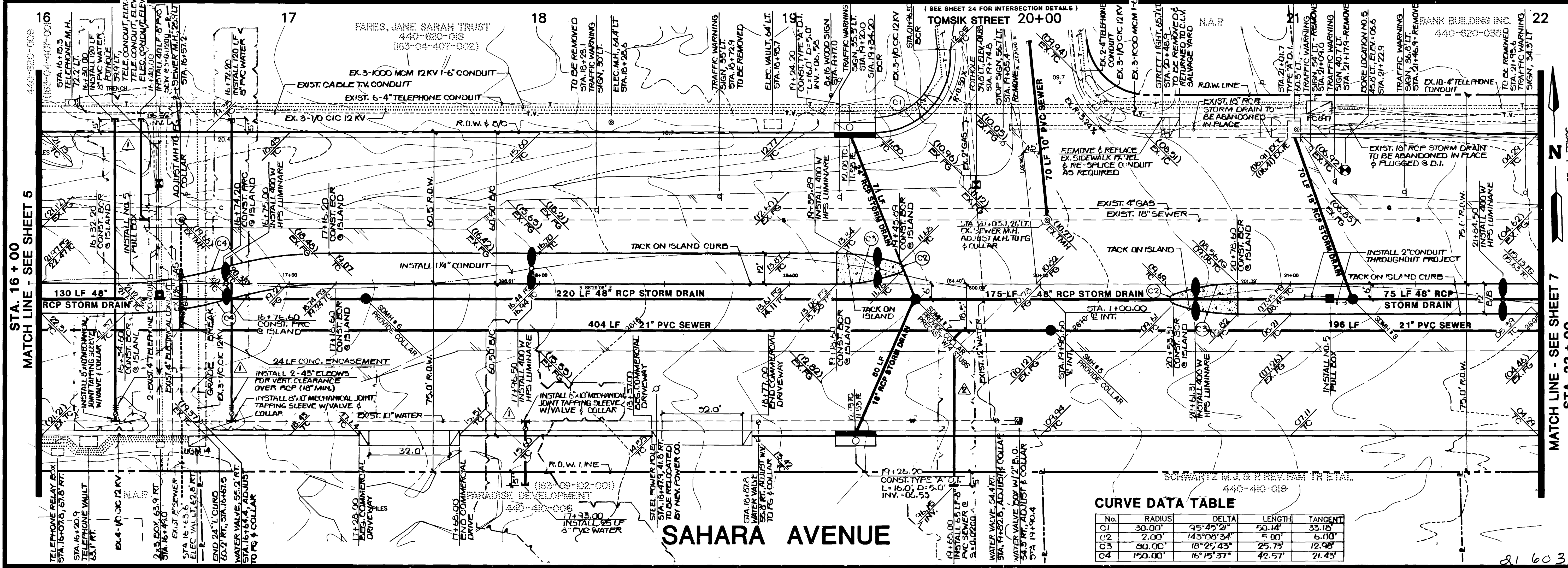
NOTE: ALL FINISH GRADES OF AC PAVEMENT SHALL BE FLUSH WITH LIP OF CURB. ADJUST EXISTING AND PROPOSED MANHOLES IN THE PAVEMENT AREA ACCORDINGLY.

APPROVAL	REVISION	DATE	BY
	1	05-08-90	DWD
	2	08-26-95	DWD

ADD SEW & WATER LIT. 8/17/85 TO P45.00
MOVED SEW LIT FROM STA. 17+83.00 TO P45.00

EGS ENGINEERS, INC.
REGISTERED PROFESSIONAL ENGINEER
STATE OF CALIFORNIA LICENSE NO. 48117

SUBMITTED BY: *[Signature]* 6/23/92



CURVE DATA TABLE

No.	RADIUS	DELTA	LENGTH	TANGENT
C1	30.00'	95°45'21"	50.14'	33.10'
C2	2.00'	143°08'34"	4.00'	6.00'
C3	30.00'	18°25'45"	25.71'	12.98'
C4	150.00'	16°15'37"	42.57'	21.43'

SCALE: 1" = 30.00'

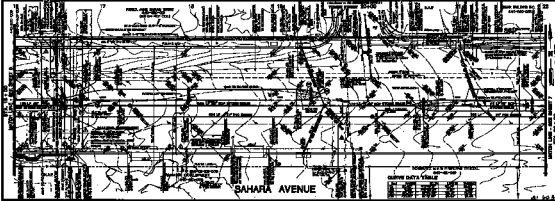
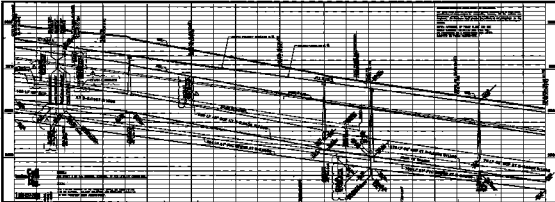
STREET & SEWER PLAN & PROFILE
(STA. 16+00 TO STA. 22+00)

S.I.D. 1427- SAHARA AVENUE
(DURANGO DRIVE TO RAINBOW BOULEVARD)

W.O. #: 130-9520
BY: CHAO/BLOOM
DATE: 5/91
SCALE: VERT. 1" = 4'
HORIZ. 1" = 20'

CL.V. DRAWING NO. **6/43**
107-V-2036

"As Built" 107-V2036



NO. 1	12-100	12-100	12-100
NO. 2	12-100	12-100	12-100
NO. 3	12-100	12-100	12-100
NO. 4	12-100	12-100	12-100
NO. 5	12-100	12-100	12-100
NO. 6	12-100	12-100	12-100
NO. 7	12-100	12-100	12-100
NO. 8	12-100	12-100	12-100
NO. 9	12-100	12-100	12-100
NO. 10	12-100	12-100	12-100

STREET & HIGHWAY PLAN & PROFILE
 (S.S. 11-00 TO S.S. 20-00)
 SAHARA AVENUE
 EXPANDED DRIVE TO RAINBOW BOULEVARD

NO. 1 12-100
 NO. 2 12-100
 NO. 3 12-100
 NO. 4 12-100
 NO. 5 12-100
 NO. 6 12-100
 NO. 7 12-100
 NO. 8 12-100
 NO. 9 12-100
 NO. 10 12-100