

APPROVAL	REV	DATE	BY	REVISION
	A	7-1-94	O.F.	RELOCATED STA 11 #2

ESCHENBACHER ENGINEERS & ARCHITECTS, INC.
 7015 W. WASHINGTON BLVD.
 SUITE 200
 DENVER, CO 80231
 PHONE: 303-733-8811
 FAX: 303-733-8812
 SUBMITTED BY: *[Signature]* 6/23/92

W.O. #:	130-9520
BY:	CHAO/BLOOM
DATE:	5/91
SCALE:	VERT. 1"=4' HORIZ. 1"=20'

CLV. DRAWING NO.	107-V-2036
3	43

"As Built" 107-V2036

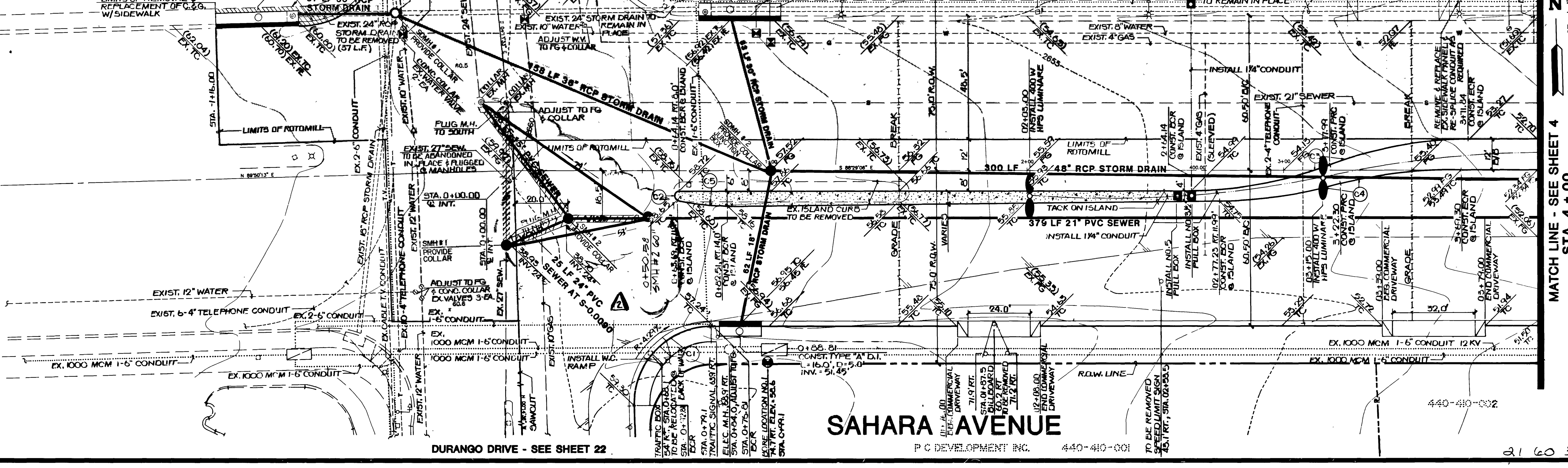
Call before you Dig.
 1-800-227-2600
 UTILITY SERVICE

NOTE:
 SEE SHEET 2 OF 43, GENERAL NOTE NO. 17 FOR UTILITY CROSSINGS.

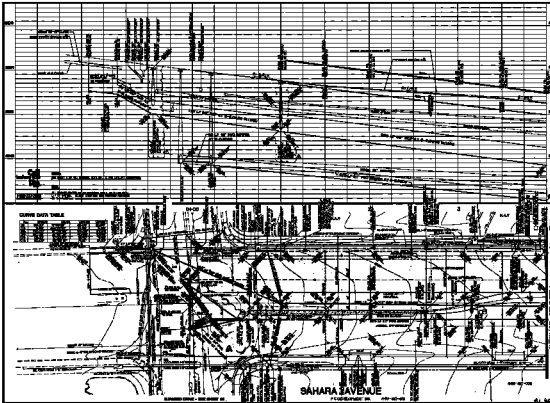
NOTE:
 ALL FINISH GRADES OF AC PAVEMENT SHALL BE FLUSH WITH LIP OF GUTTER. ADJUST EXISTING AND PROPOSED MANHOLES IN THE PAVEMENT AREA ACCORDINGLY.

CURVE DATA TABLE

No.	RADIUS	DELTA	LENGTH	TANGENT
C1	30.00'	91°45'30"	46.04'	30.94'
C2	2.00'	165°59'50"	17.55'	5.83'
C3	150.00'	21°02'22"	55.00'	27.89'
C4	187.00'	13°57'35"	45.58'	22.80'
C5	90.00'	13°35'35"	16.46'	9.59'
C6	35.00'	36°22'12"	19.31'	10.00'



SAHARA AVENUE
 DURANGO DRIVE - SEE SHEET 22
 MATCH LINE - SEE SHEET 4
 STA. 4+00



	SHEET NO. 5A-97 DATE: 11/11/00 DRAWN BY: [Signature] CHECKED BY: [Signature]
	PROJECT: [Text] CLIENT: [Text]
SCALE: 1/4" = 100' FEET	NORTH ARROW
SHEET NO. 5A-97 DATE: 11/11/00 DRAWN BY: [Signature] CHECKED BY: [Signature]	PROJECT: [Text] CLIENT: [Text]
SHEET NO. 5A-97 DATE: 11/11/00 DRAWN BY: [Signature] CHECKED BY: [Signature]	PROJECT: [Text] CLIENT: [Text]

SAHARA AVENUE