

U.S. HOME CITY OF LAS VEGAS, NEVADA

REVISION

REV	DATE	BY
1	8-4-94	TFA
2		
3		

PLANNERS • LAND SURVEYORS

CONSULTING ENGINEERS •

7171 SOUTH RAINBOW BOULEVARD
LAS VEGAS, NEVADA 89102-5148 PHONE (702) 873-7550 FAX (702) 362-2997

OFFSITE SEWER PLAN & PROFILE

RIO VISTA ESTATES UNIT 1

SEAL

9/20/93

NO. 4500-1

BY: TEH, WJR

DATE: 9/1/93

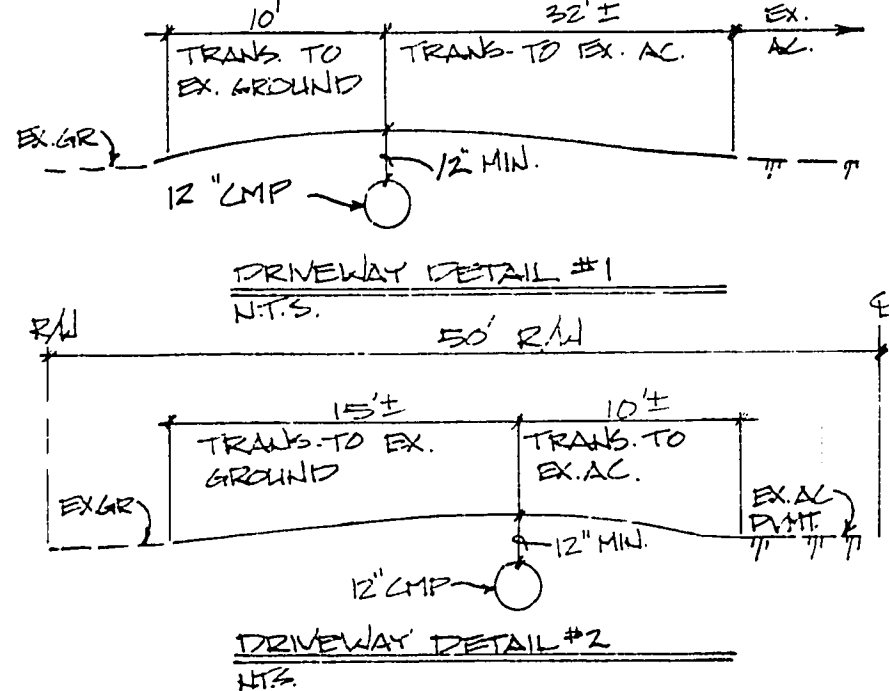
SCALE: HORIZ. 1"=10'
VERT. 1"=2'

SHEET 15 OF 16 SHEETS

BENCHMARK
5/8" REBAR IN GROUND 50' WEST OF CENTERLINE OF RAINBOW BOULEVARD AND WELCOME LANE, 8' NORTH OF TELEPHONE STAND PIPE.
BM#1119034E4
ELEVATION = 2319.049

OFFSITE QUANTITIES (THIS SHEET ONLY)

STANDARD SEWER MANHOLE	3 EA.
12" SEWER MAIN	786 LF
6" SEWER MAIN	117 LF
WYES	0 EA.



11-17-216

3074-4321-1