

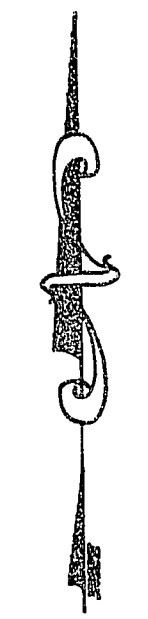
REVISIONS	BY

RICHMOND PARK CONDOMINIUMS
PHASES 2, 3 & 4
UTILITY PLAN - PHASE 2

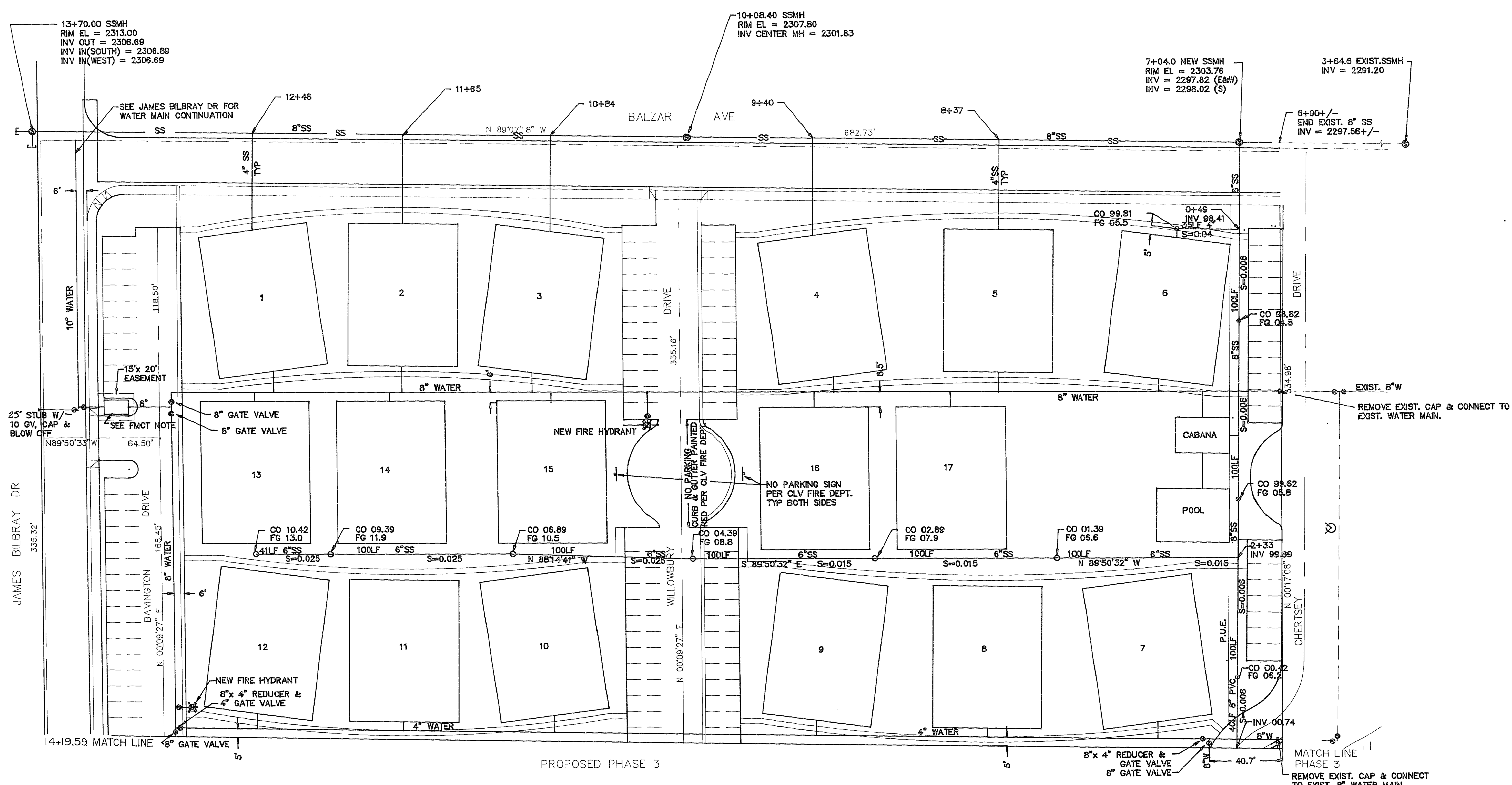
KDF ENGINEERING
3407 EL CAMINO
LAS VEGAS, NV 89102
(702) 876-5869

Ray Merriman

2/16/90
DESIGNED
R. MERRIMAN
CHECKED
DATE
FEB. 1990
SCALE
1"=30'
JOB NO.
89001
SHEET



SCALE
1"=30'



FMCT NOTE:
THE MATERIAL AND VAULT WITH NON-TRAFFIC BEARING COVER, MUST BE INSTALLED IN ACCORDANCE WITH THE DISTRICT'S STANDARD PLATES AND WITH STANDARD VAULT DRAWING C-475 REV. 3.
ANY FUTURE BLOCK WALL OR FENCE MUST BE DESIGNED AROUND THE EASEMENT SO AS TO ALLOW THE DISTRICT ACCESS TO THE VAULT FROM THE ADJACENT RIGHT-OF-WAY. VAULT EASEMENT = 15'x 20'.

SEWER NOTE:
ALL ON-SITE SEWER IS TO BE PRIVATELY OWNED AND MAINTAINED, INCLUDING THAT PORTION EXTENDING INTO PUBLIC RIGHT OF WAY, OUT TO THE POINT OF CONNECTION.

NOTES:
1. 6" SANITARY SEWER COLLECTORS ARE SET ON 1% MIN SLOPE TYPICAL UNLESS OTHERWISE NOTED.
2. 4" BUILDING SERVICES ARE SET ON 2% MIN SLOPE TYPICAL UNLESS OTHERWISE NOTED.
3. DISTANCE BETWEEN CLEANOUTS IS 100 LF TYPICAL UNLESS OTHERWISE NOTED.
4. WATER SERVICES ARE 1 1/2" EACH BUILDING

Approved for Construction:
L.V.V.W.P.
Date 3/20/90

10-3-98