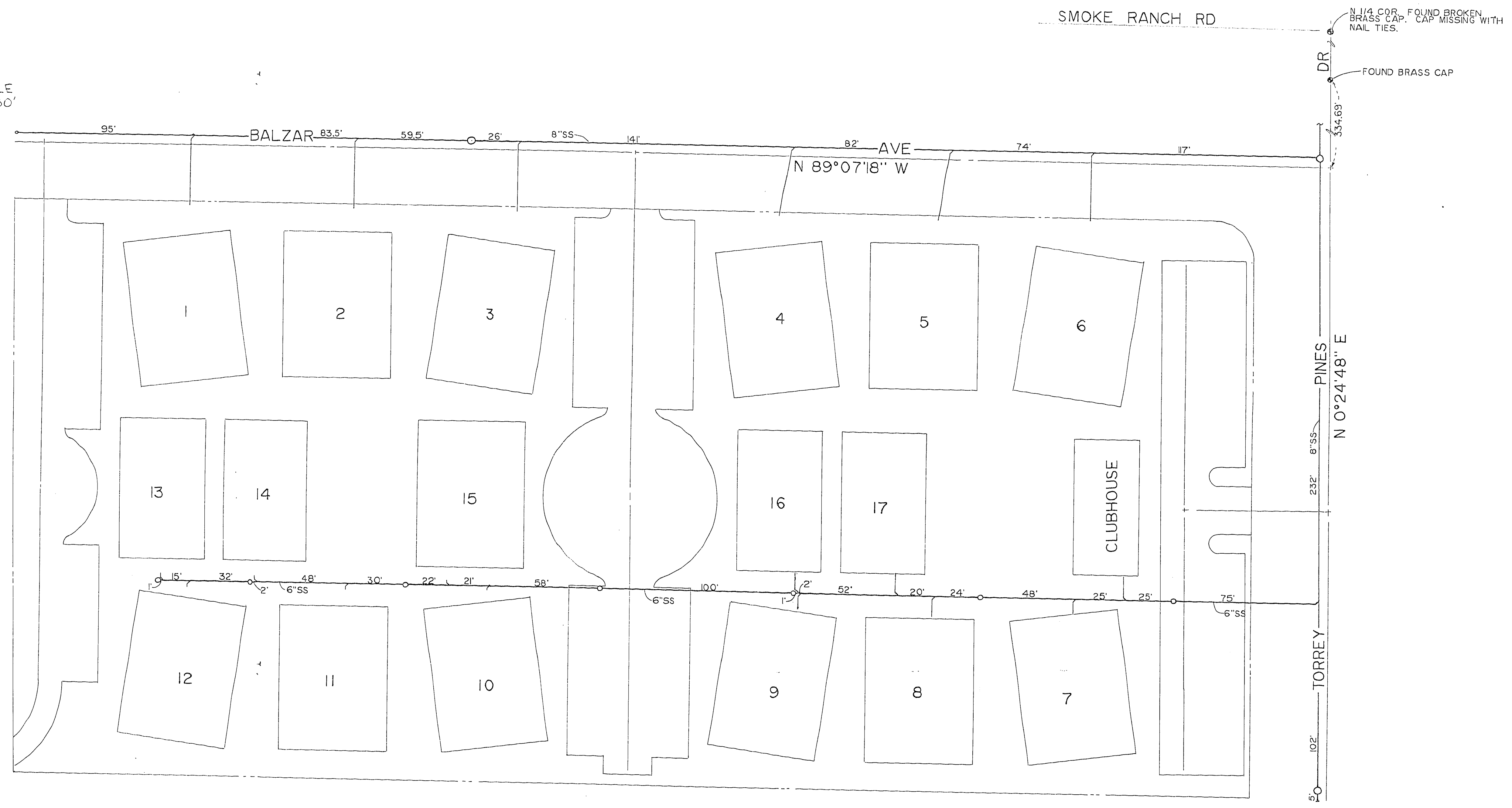


SCALE  
1"=30'



LEGEND  
 ○ SANITARY SEWER MANHOLE  
 ◐ SANITARY SEWER CLEANOUT

NOTE:  
 BUILDINGS 1,2,3,10,11,12,13,14, & 15  
 HAVE NOT BEEN BUILT - 2/22/89

NOTE:  
 PIPE MATERIAL IS PVC SDR35

BAVINGTON COURT  
 (RICHMOND PARK, PHASE I)  
 SANITARY SEWER  
 AS-BUILTS

K.D.F. ENGINEERING  
 DRAWN BY: R. MERRIMAN  
 DATE: 2/22/89

10836 As Built 3071-2645-1