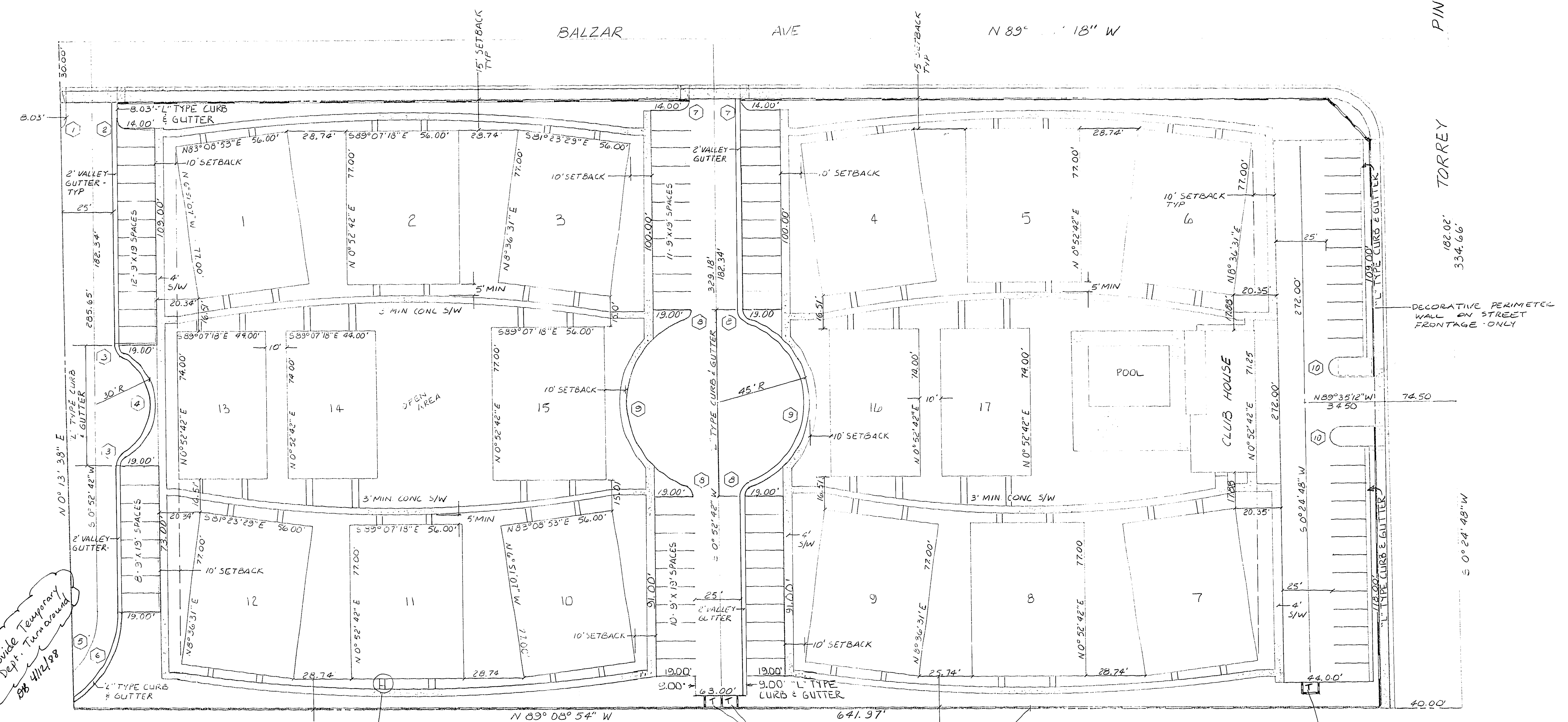


FUTURE PHASE 2

Provide Temporary Fire Dept. Turnaround 8/8 4/12/198

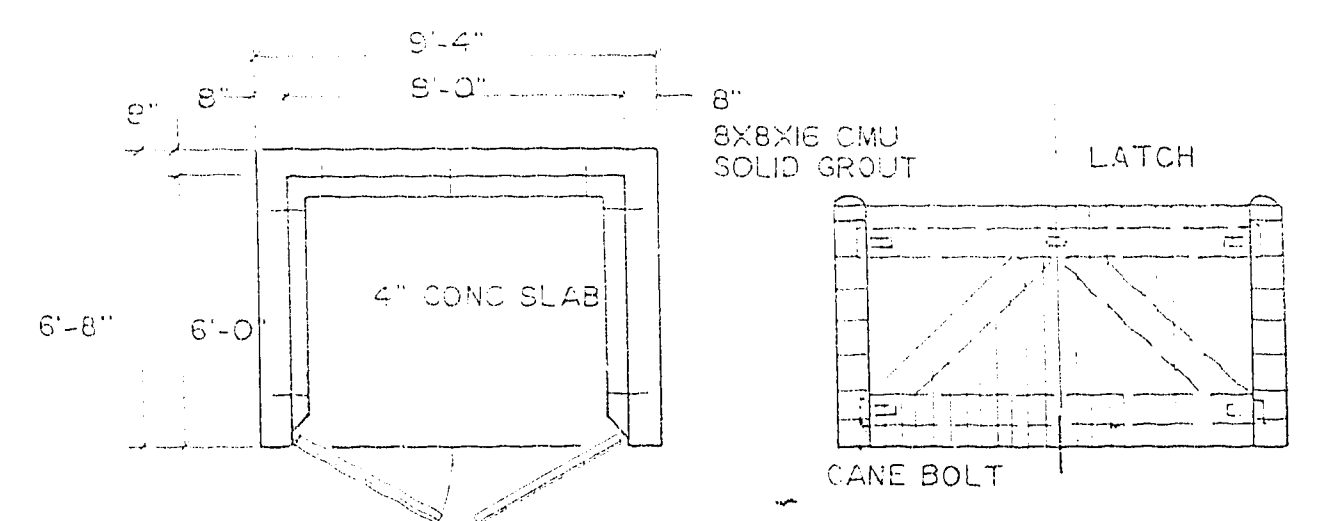


SIDEWALK & STEP - SEE GRADING PLAN FOR STEP LOCATION & DETAIL - TYP

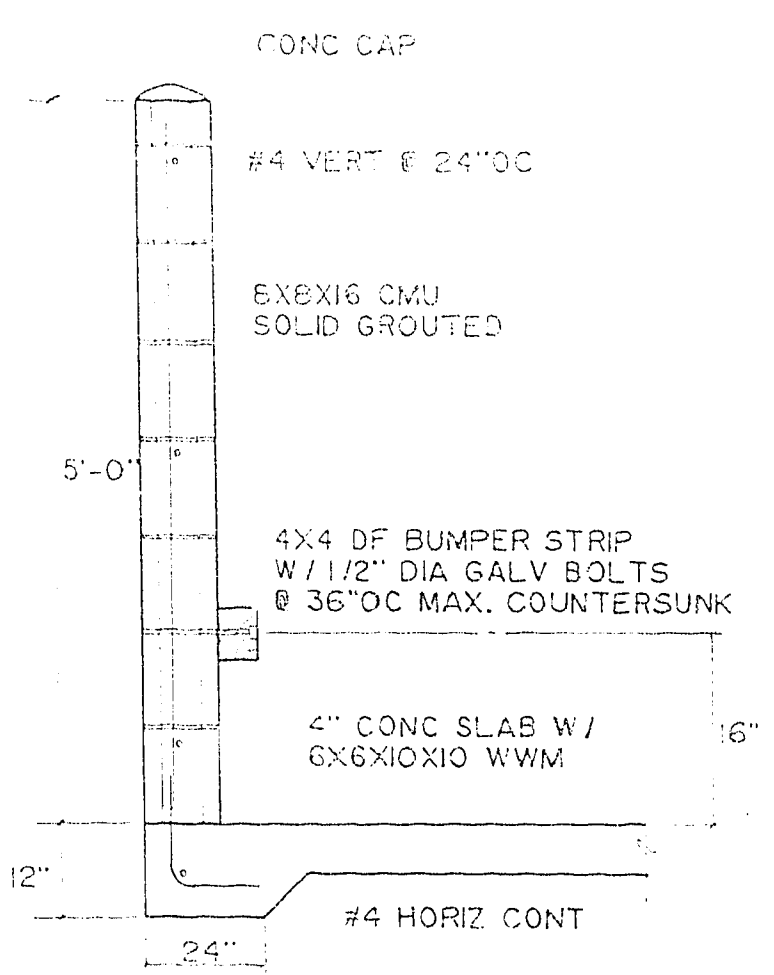
2 TRASH ENCLOSURES SIDE BY SIDE WITH COMMON CENTER WALL - REAR WALL'S PERIMETER SCREEN WALL

CONSTRUCT 6' PERIMETER SCREEN WALL PER CLV STDS 642 LF

TRASH ENCLOSURE SEE DETAIL THIS SHEET



2X8 FRAME GATES W/ 1/2 T-I-II EXTERIOR SIDING HINGES: 1/4"X3"X10" STL PL W/ 1/2" DIA PINS-3/8" BOLTS TO GATE & TWO 3/8" AB TO MASONRY
NOTE: ALL HARDWARE TO BE GALVANIZED



ABBREVIATIONS

- | | | | |
|--------|------------------|-----|---------------------|
| AC | ASPHALT CONCRETE | T | TANGENT |
| AGG | AGGREGATE | TC | TOP OF CURB |
| BLDG | BUILDING | TYP | TYPICAL |
| B/W | BACK OF WALK | V | VERTICAL |
| C | CENTERLINE | W | WATER / WATT / WEST |
| CONC | CONCRETE | W / | WITH |
| CONT | CONTINUOUS | WWM | WELDED WIRE MESH |
| ANGLE | ANGLE | CR | CURB RETURN |
| D/W | DRIVEWAY | | |
| EXIST. | EXISTING | | |
| R | FLOWLINE | | |
| GB | GRADE BREAK | | |
| HDZ | HORIZONTAL | | |
| HP | HIGH POINT | | |
| INV | INVERT | | |
| L | LENGTH | | |
| LF | LINEAL FEET | | |
| MAX. | MAXIMUM | | |
| MIN | MINIMUM | | |
| MH | MANHOLE | | |
| NO./# | NUMBER | | |
| NTS | NOT TO SCALE | | |
| OC | ON CENTER | | |
| PL | PROPERTY LINE | | |
| R | RADIUS | | |
| R/W | RIGHT OF WAY | | |
| S | SOUTH / SLOPE | | |
| SS | SANITARY SEWER | | |
| S/W | SIDEWALK | | |

NOTE: ALL CURB IS "A" TYPE CURB UNLESS OTHERWISE SHOWN - SEE DETAIL SHEET 7

CURVE DATA				
#	Δ	R	L	T
1	62°49'01"			
2	30°00'00"	5.00'	7.85'	5.00'
3	60°00'00"	5.00'	5.24'	2.89'
4	120°00'00"	30.00'	62.83'	51.96'
5	44°53'19"	42.50'	33.30'	17.56'
6	56°36'06"	55.00'	54.33'	29.62'
7	90°00'00"	5.00'	7.85'	5.00'
8	90°00'00"	5.00'	6.07'	3.47'
9	139°01'31"	45.00'	109.19'	120.44'
10	180°00'00"	5.00'	15.70'	-

K D F ENGINEERING

SITE PLAN
RICHMOND PARK CONDOMINIUMS
PHASE I
HIGH DESERT ESTATES

NEVADA

LAS VEGAS

3/11/18

SHEET
2
OF
7

107Y-2645-1