

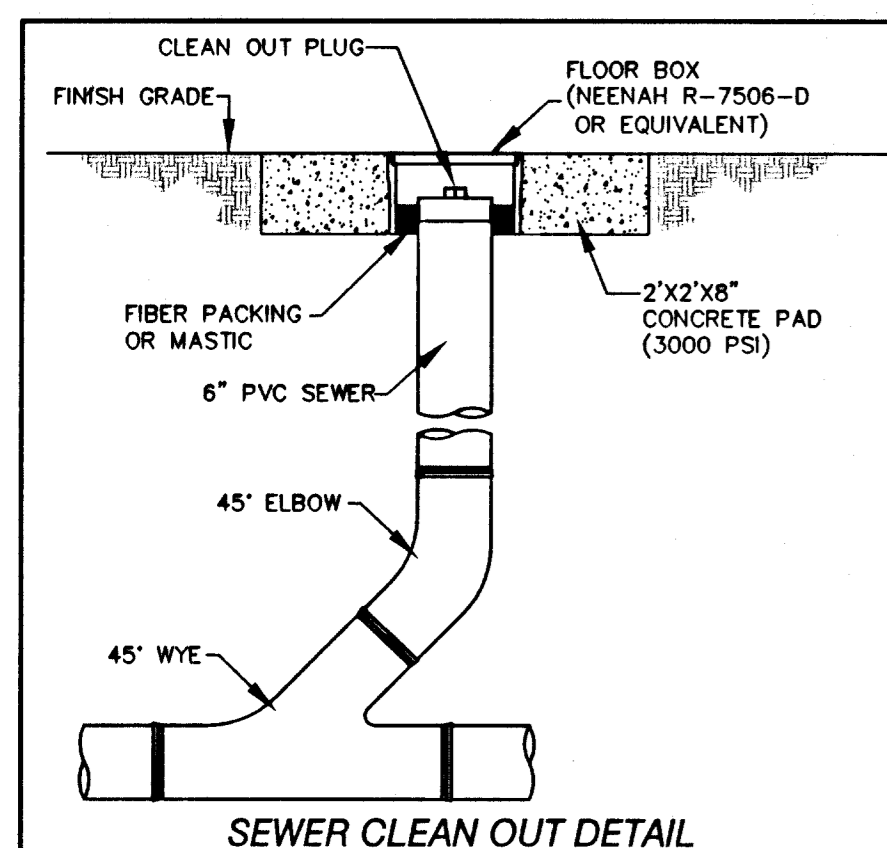
BENCHMARK
 CITY OF LAS VEGAS BENCHMARK 1LV002 NE08
 RIVET & PLATE IN TOP OF CURB ON THE WEST SIDE OF JONES 1/4 MILE NORTH OF CRAIG
 690.991 METERS
 2267.03 FEET
 (NAVD 88)

BASIS OF BEARINGS
 SOUTH 89°12'30" EAST, BEING THE CENTERLINE OF CRAIG ROAD AS SHOWN ON FILE 82, PAGE 44 OF PARCEL MAPS, CLARK COUNTY, NEVADA, OFFICIAL RECORDS.

LEGAL DESCRIPTION
 BEING A PORTION OF LOT ONE (1) OF "REGAL PLAZA COMMERCIAL SUBDIVISION" AS SHOWN BY MAP THEREOF IN FILE 90 OF PLATS, PAGE 27, OFFICIAL RECORDS, CLARK COUNTY, NEVADA, SITUATED IN THE SOUTHWEST QUARTER (SW 1/4) OF SECTION 1, TOWNSHIP 20 SOUTH, RANGE 80 EAST, CLARK COUNTY, NEVADA.

APN 138-01-312-003

UTILITY LOCATION NOTE:
 J.H.R. ASSOCIATES ASSUMES NO RESPONSIBILITY FOR EXISTING UTILITY LOCATIONS. THE UTILITIES SHOWN ON THIS DRAWING HAVE BEEN PLOTTED FROM THE BEST AVAILABLE INFORMATION. IT IS, HOWEVER, THE CONTRACTOR'S RESPONSIBILITY TO FIELD VERIFY THE LOCATION OF ALL UTILITIES PRIOR TO THE COMMENCEMENT OF ANY CONSTRUCTION. CONTRACTOR TO FIELD VERIFY ALL EXISTING SITE CONDITIONS PRIOR TO CONSTRUCTION. IF A CONFLICT EXISTS BETWEEN WHAT IS SHOWN ON THIS DRAWING AND WHAT EXISTS IN THE FIELD, CONTRACTOR IS TO NOTIFY THE ENGINEER IMMEDIATELY.



**CITY OF LAS VEGAS FIRE DEPARTMENT
 FIRE FLOW CALCULATIONS**

FIRE FLOW REQUIREMENT IS: 1500 GALLONS PER MINUTE
 BASED ON:
 SQUARE FOOTAGE: 5500 SQUARE FEET
 LARGEST AREA BETWEEN 4-HOUR AREA SEPARATION WALLS: 5500 SQUARE FEET
 BUILDING HEIGHT: 22.5 FEET
 NUMBER OF STORIES: 1 FLOOR
 TYPE OF CONSTRUCTION: V-B
 OCCUPANCY: B
 FULL AUTOMATIC FIRE SPRINKLER SYSTEM: YES

REVIEWED BY: *[Signature]*
 CITY OF LAS VEGAS FIRE DEPT.
 DATE: 2/29/18

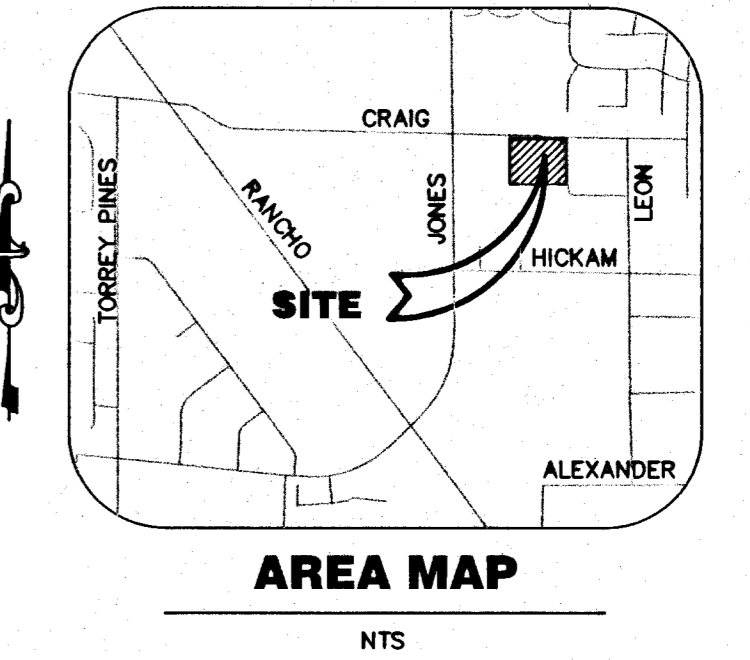
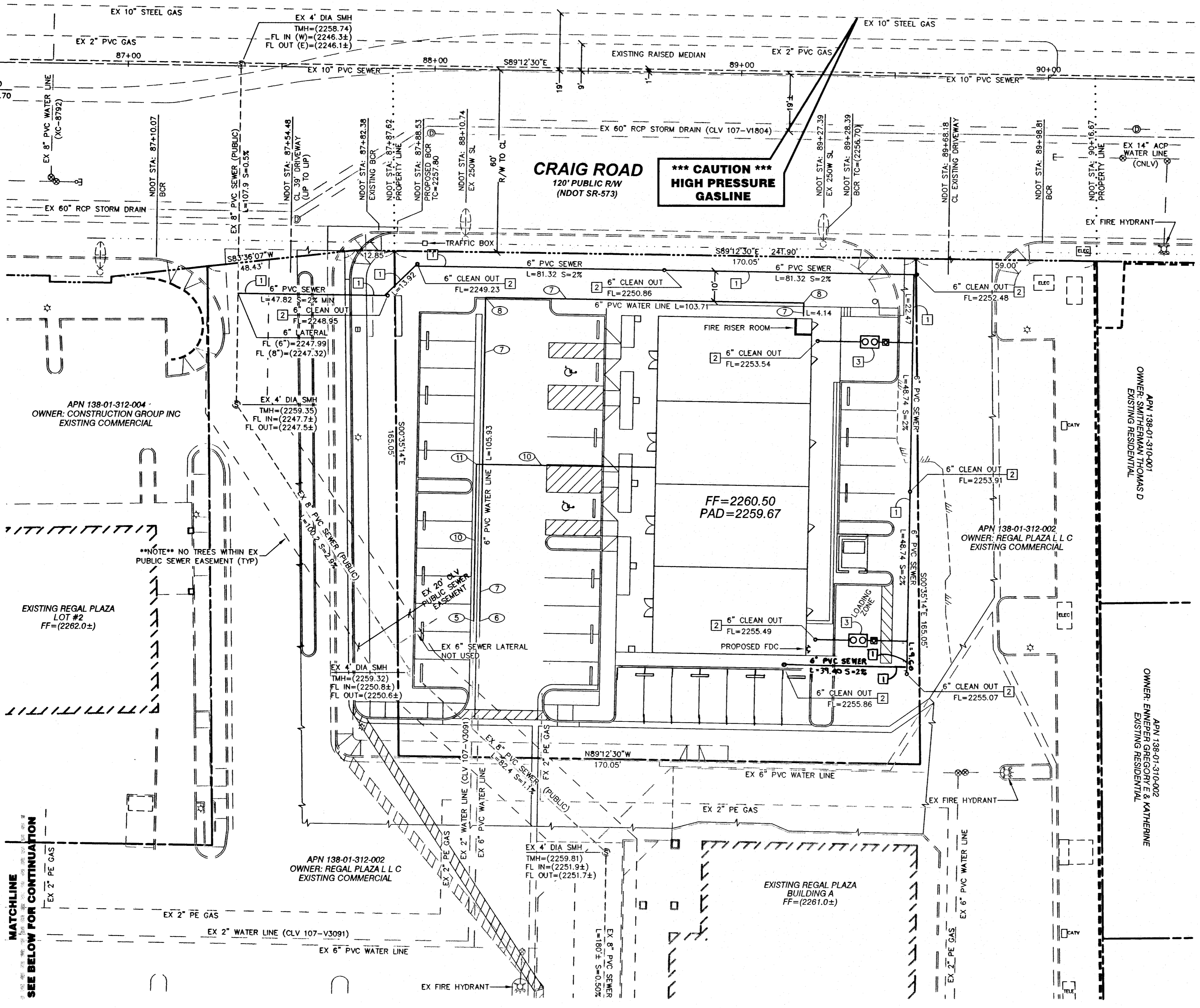
REDUCED PRESSURE PRINCIPLE ASSEMBLY (1) - 1-1/2"
 APPROVED REDUCED PRESSURE PRINCIPLE ASSEMBLY(S) SHALL BE INSTALLED PER THE UDACS PLATE NO. 11A. NO WATER SHALL BE TAKEN FROM A SERVICE REQUIRING BACKFLOW PREVENTION UNTIL THE REDUCED PRESSURE PRINCIPLE ASSEMBLY HAS BEEN SUCCESSFULLY TESTED BY THE LVWMD. ANY BLOCK WALL OR OTHER FENCE MATERIAL SHALL BE DESIGNED AND CONSTRUCTED AROUND THE OUTSIDE OF THE EASEMENT(S) TO ALLOW THE DISTRICT DIRECT ACCESS FROM THE ADJACENT RIGHT-OF-WAY. EASEMENT SHALL BE CLEARLY MARKED OR STAKED PRIOR TO THE START OF CONSTRUCTION.

CALL SOUTHWEST GAS AT 365-2296 FOR STANDBY WHEN EXCAVATING OVER OR NEAR HIGH PRESSURE GAS LINES

Call before you Dig
 1-800-227-2600
 (48 hrs. Advance Notice Required)

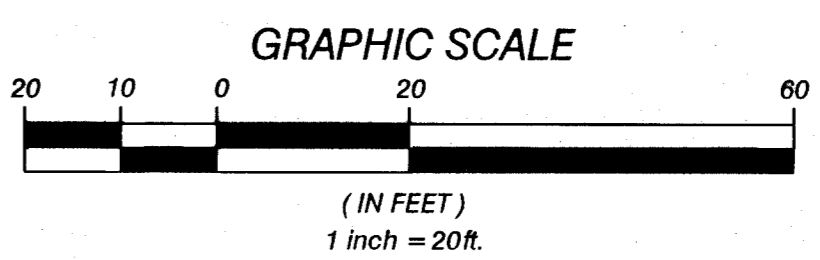
Call before you OVERHEAD
 1-702-227-2929
 NEVADA POWER ENVIRONMENT AND SAFETY SERVICES DEPARTMENT

Call before you UNDERGROUND
 1-702-458-7511
 CLARK COUNTY TRAFFIC OPERATIONS AND LAS VEGAS AREA COMPUTERIZED TRAFFIC SYSTEM



LEGEND

---	PROPERTY LINE
---	RIGHT OF WAY
---	CENTERLINE
---	AC CUTLINE
---	EXISTING CURB
---	PROPOSED CURB
---	EXISTING EDGE OF PAVEMENT
---	PROPOSED EDGE OF PAVEMENT
---	EXISTING BLOCK WALL
---	PROPOSED BLOCK WALL
---	CONT. OR WALL
---	EXISTING OVER HEAD POWER
---	ASPHALTIC CONCRETE
---	BACK OF CURB
---	BEGINNING OF CURB RADIUS
---	BACK OF WALK
---	CURB & GUTTER
---	CENTERLINE
---	CONCRETE
---	END OF CURB RADIUS
---	EDGE OF PAVEMENT
---	EXISTING
---	FINISH GRADE
---	FLOW LINE
---	GRADE BREAK
---	HIGH POINT
---	LOW POINT
---	NATURAL GROUND
---	PROPERTY LINE
---	STATION
---	SIDEWALK
---	TOP OF CURB
---	TOP OF FOOTING
---	TOP OF RETAINING WALL
---	TOT. OR WALL
---	EXISTING WATER VALVE
---	PROPOSED WATER VALVE
---	EXISTING FIRE HYDRANT
---	PROPOSED FIRE HYDRANT
---	EXISTING WATER LINE
---	PROPOSED WATER LINE
---	EXISTING 250W STREET LIGHT
---	EXISTING GUY WIRE
---	EXISTING POWER POLE
---	NOTHING OVER 24 INCHES IN HEIGHT AS MEASURED FROM TOP OF CURB ALLOWED IN SVZ EXCEPT TRAFFIC CONTROL DEVICES



WATER CONSTRUCTION NOTES/QUANTITIES

1	INSTALL 1 1/2" WATER METER PER UDACS STD PLATE 1D	1 EA
2	INSTALL 1 1/2" BRASS WATER LINE	9 LF
3	INSTALL 1 1/2" 90° BRASS BEND	1 EA
4	INSTALL 1 1/2" RPPA PER UDACS STD PLATE 11A	1 EA
5	REMOVE CAP AND CONNECT TO EX 2" WATER LINE	1 EA
6	REMOVE CAP AND CONNECT TO EX 6" PVC WATER LINE	1 EA
7	INSTALL 6" PVC WATER LINE	213.8 LF
8	INSTALL 6" 90° BEND	2 EA
9	CUT EX 2" WATER AND INSTALL 2" 90° BEND	2 EA
10	INSTALL 2" PE WATER LINE	143.1 LF
11	INSTALL 2" 90° BEND	2 EA

SEWER CONSTRUCTION NOTES/QUANTITIES

1	INSTALL 6" PVC SEWER 2% MIN (PRIVATE)	455 LF
2	INSTALL 6" SEWER CLEANOUT (PRIVATE)	9 EA
3	INSTALL GREASE INTERCEPTOR PER PLUMBING PLAN	2 EA

NOTE: ALL ABOVE GROUND UTILITY APPURTENANCES SHALL CONFORM TO THE REQUIREMENTS OF TITLE 19.12.040

[Signature] DATE: 2/29/18
 CITY OF LAS VEGAS FIRE DEPARTMENT

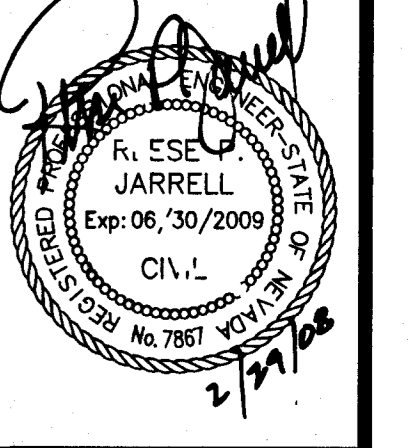
REV	BY	DATE	DESCRIPTION

REGAL PLAZA PAD D LLC
 701 BRIDGER AVENUE #140 LAS VEGAS, NEVADA 89101-5857
 PHONE: (702) 366-0444 FAX: (702) 366-1856

JHR Associates Ltd.
 4880 W. UNIVERSITY, SUITE B-2 PH (702) 876-2341
 LAS VEGAS, NEVADA 89103 FAX (702) 876-6395

UTILITY PLAN
REGAL PLAZA PAD D
CITY OF LAS VEGAS, NEVADA

DRAWN BY: J.P.
 DESIGNER: BY
 CHECKED BY: Y
 PROJECT NO: 252-06-021
 SCALE: HORIZ: 1"=20'
VERT: N/A



SHEET **C3** OF 7 SHEETS
 CLV DWG # 107V3091-D