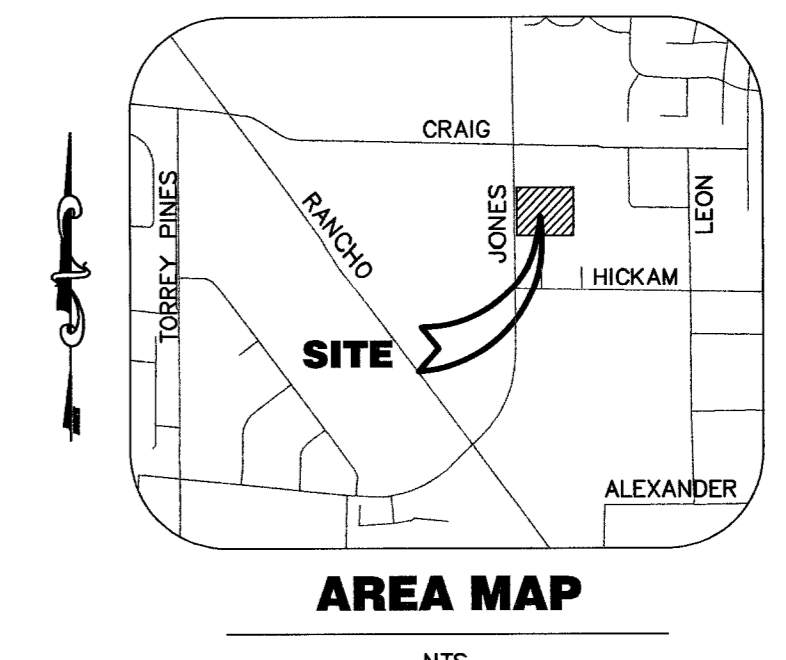
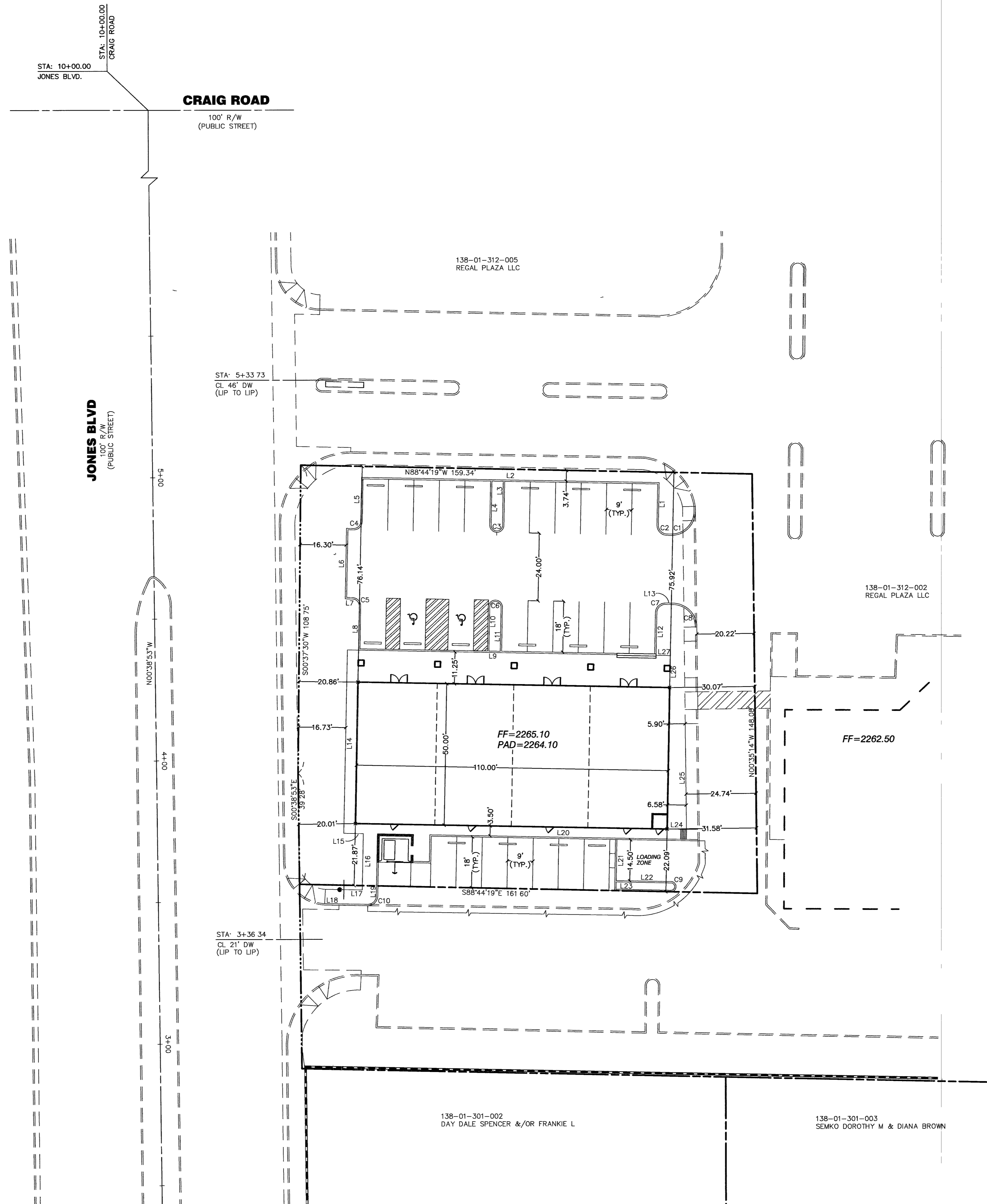


LEGAL DESCRIPTION
 LOT 4, PARCEL MAP, FILE 103, PAGE 69, OFFICIAL RECORDS, CLARK COUNTY, NEVADA.

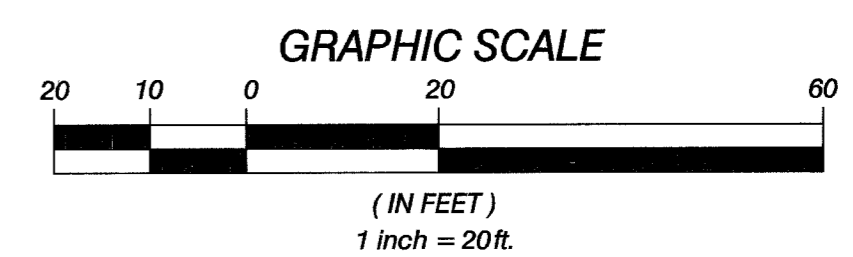
BASIS OF BEARING
 N00°38'53"W, - BEING THE CENTERLINE OF JONES BLVD. AS SHOWN ON FILE 82, PAGE 44 OF PARCEL MAPS, CLARK COUNTY NEVADA OFFICIAL RECORDS.

BENCHMARK
 1LV002NEE6
 ELEVATION 2267.40 FT; 691.1049(M) NAVD88
 RIVET & PLATE IN TOP OF CURB, 1/4 MILE NORTH OF CRAIG ROAD ON JONES BLVD., WEST CURB LINE.
 APN: 138-01-312-006



LEGEND

---	PROPERTY LINE
---	RIGHT OF WAY
---	CENTERLINE
---	AC CUTLINE
---	EXISTING CURB
---	PROPOSED CURB
---	EXISTING EDGE OF PAVEMENT
---	PROPOSED EDGE OF PAVEMENT
---	EXISTING BLOCK WALL
---	PROPOSED BLOCK WALL
---	CONTOUR LINE
---	EXISTING OVER HEAD POWER
---	ASPHALTIC CONCRETE
---	BACK OF CURB
---	BEGINNING OF CURB RADIUS
---	BACK OF WALK
---	CURB & CUTTER
---	CENTERLINE
---	CONCRETE
---	END OF CURB RADIUS
---	EDGE OF PAVEMENT
---	EXISTING
---	FINISH GRADE
---	FLOW LINE
---	GRADE BREAK
---	HIGH POINT
---	LOW POINT
---	NATURAL GROUND
---	PROPERTY LINE
---	STATION
---	SIDEWALK
---	TOP OF CURB
---	TOP OF FOOTING
---	TOP OF RETAINING WALL
---	TOP OF WALL
---	EXISTING 250V STREET LIGHT
---	EXISTING GUY WIRE
---	EXISTING POWER POLE



LINE TABLE

LINE	LENGTH	BEARING
L1 BC	15.00'	N01°08'46"E
L2 BC	105.00'	N88°51'14"W
L3 BC	15.53'	N01°08'46"E
L4 BC	15.53'	N01°08'46"E
L5 BC	15.50'	S01°08'46"W
L6 BC	25.00'	S01°08'46"W
L7 BC	2.50'	S88°51'14"E
L8 BC	15.50'	S01°08'46"W
L9 BC	91.19'	S88°51'14"E
L10 BC	15.50'	N01°08'46"E
L11 BC	15.50'	N01°08'46"E
L12 BC	15.25'	N01°08'46"E
L13 BC	2.71'	S88°51'28"E
L14 BC	64.75'	S01°15'41"W
L15 BC	6.90'	N88°51'14"W
L16 BC	19.88'	S01°08'46"W
L17 BC	13.00'	S89°00'55"E
L18 BC	15.22'	S89°00'25"E
L19 BC	3.50'	S01°08'46"W
L20 BC	95.10'	S88°51'14"E
L21 BC	18.05'	S01°08'22"W
L22 BC	19.27'	S88°49'14"E
L23 BC	19.27'	N88°43'28"W
L24 BC	6.84'	S88°51'14"E
L25 BC	37.30'	S00°33'54"E
L26 BC	11.25'	N01°08'46"E
L27 BC	5.00'	S88°51'14"E

CURVE TABLE

CURVE	LENGTH	RADIUS	DELTA	TANGENT
C1 BC	12.81'	8.00'	91°42'30"	8.24'
C2 BC	4.71'	3.00'	90°00'00"	3.00'
C3 BC	6.28'	2.00'	180°00'00"	-
C4 BC	3.93'	2.50'	90°00'00"	2.50'
C5 BC	3.93'	2.50'	90°00'00"	2.50'
C6 BC	6.28'	2.00'	180°00'00"	-
C7 BC	4.71'	3.00'	90°00'00"	3.00'
C8 BC	12.33'	8.00'	88°17'20"	7.78'
C9 BC	4.31'	1.25'	190°43'39"	13.79'
C10 BC	4.70'	3.00'	89°43'24"	2.99'

Call before you Dig.
 1-800-227-2800
 (48 hrs Advance Notice Required)

Call before you UNDERGROUND
 1-702-456-7611
 CLARK COUNTY TRAFFIC OPERATIONS
 AND
 1-702-229-6611
 LAS VEGAS AREA COMPUTERIZED TRAFFIC SYSTEM

JAMES ALLAN & CO.
 4920 CAMERON STREET, SUITE 1 LAS VEGAS, NEVADA 89103-7703
 PHONE: (702) 368-4374 FAX: (702) 368-7874

JAR Associates Ltd.
 4880 W UNIVERSITY, SUITE B-2 PH (702) 876-2341
 LAS VEGAS, NEVADA 89103 FAX (702) 876-8395

HORIZONTAL CONTROL PLAN
 REGAL PLAZA - LOT 4
 5871 W. CRAIG ROAD
 CITY OF LAS VEGAS, NEVADA

SCALE: 1"=20'
VERTI: N/A

RESE JARRELL
 Exp: 06/30/2007
 CIVIL

SHEET 5 OF 5 SHEETS
 107V3091-4