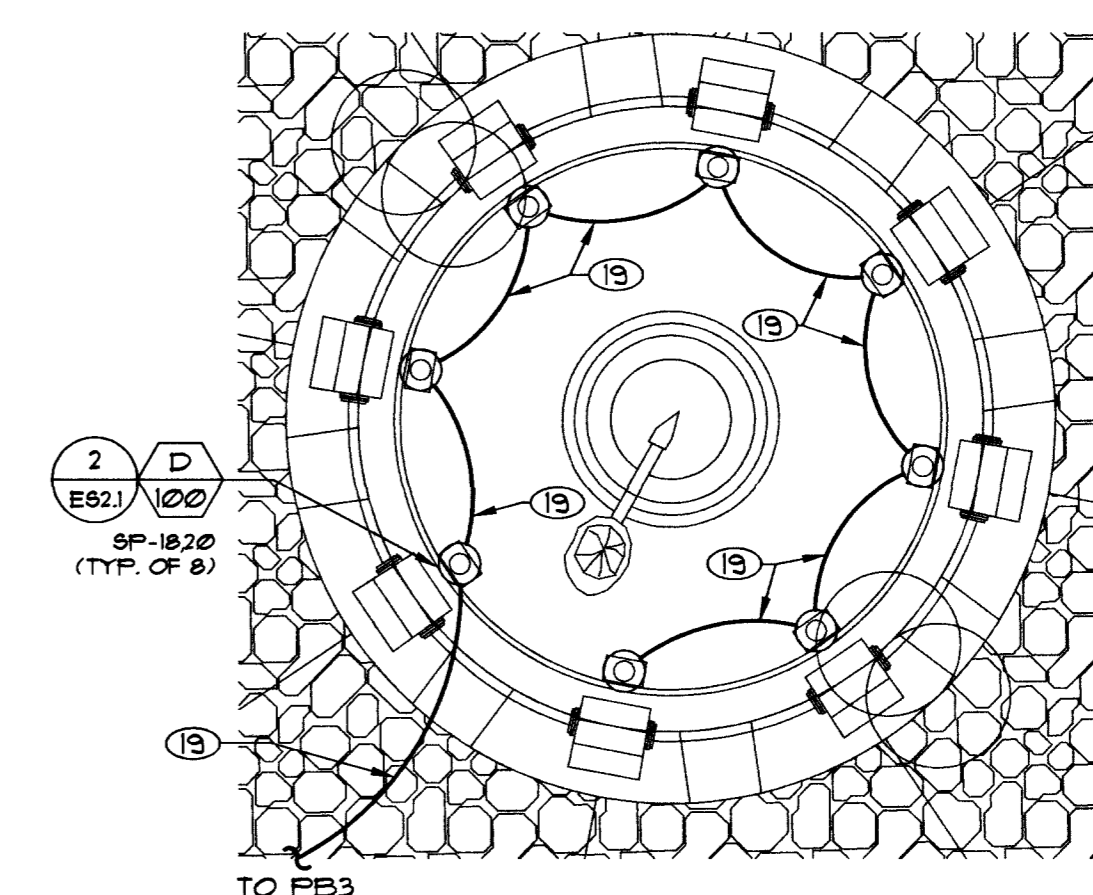


- NOTES:**
1. UNLESS OTHERWISE NOTED, ALL CONDUIT IS 1-1/4" W/ (2) #6 & (1) #8 GRD.
  2. 1-1/4" W/ (2) #4 & (1) #8 GRD.
  3. 1-1/4" W/ (4) #6 (SP-9,11,18,20), (2) #10 (SP-14,16) & (1) #8 GRD.
  4. 2" W/ (6) #4 & (1) #8 GRD. (SP-13,15,17,19,21).
  5. (1) 2" W/ (6) #4 & (1) #8 GRD. (SP-13,15,17,19,21), (1) 2" W/ (4) #6 (SP-9,11,18,20), (2) #10 (SP-14,16) & (1) #8 GRD.
  6. 1/2" RGC W/ (2) #10 & (1) #10 GRD.
  7. 200A, 120/240V PAD-MOUNTED SERVICE PEDESTAL INSTALLED PER CITY OF LAS VEGAS STANDARD DRAWINGS.
  8. 2" W/ (3) #8/0.
  9. SECONDARY HANDHOLE INSTALLED PER NPCO STANDARDS. SEE NPCO DRAWINGS FOR ADDITIONAL INFORMATION.
  10. FULLBOX INSTALLED PER SPRINT REQUIREMENTS. SEE SPRINT DRAWINGS FOR ADDITIONAL INFORMATION.
  11. FULLBOX FOR FUTURE SECURITY CAMERA CONNECTIONS. PROVIDE BOLT DOWN COVER.
  12. (1) 2" WITH FULLSTRING FOR FUTURE SECURITY CAMERA CABLES.
  13. 4" PER NPCO REQUIREMENTS. SEE NPCO DRAWINGS FOR ADDITIONAL INFORMATION.
  14. 1-1/4" W/ (2) #6 & (1) #8 GRD. DO NOT CONNECT AT EITHER END.
  15. IRRIGATION PUMP AND CONTROL ENCLOSURE. SEE LANDSCAPE AND IRRIGATION DRAWINGS FOR ADDITIONAL INFORMATION AND EQUIPMENT LOCATIONS. SEE NOTE 11 FOR WIRE AND CONDUIT SIZES FROM EQUIPMENT TO SERVICE PEDESTAL. 'SP'.
  16. FINAL CONNECTIONS TO THE BOOSTER PUMP SHALL BE MADE BY THE PUMP INSTALLER. THE BOOSTER PUMP AND DISCONNECT WITHIN THE PUMP ENCLOSURE SHALL BE PROVIDED BY THE PUMP SUPPLIER. FINAL CONNECTIONS TO IRRIGATION CONTROLLERS SHALL BE MADE BY THE IRRIGATION CONTRACTOR. FINAL CONNECTIONS TO THE CONVENIENCE OUTLETS SHALL BE MADE BY THE ELECTRICAL CONTRACTOR.
  17. (1) 1-1/4" PVC COATED RIGID GALVANIZED CONDUIT WITH (2) #4 AND (1) #8 GROUND FOR CIRCUITS (SP-22, 24) FROM PANEL SP TO THE BOOSTER PUMP; AND PROVIDE (1) 1" PVC COATED RIGID GALVANIZED CONDUIT WITH (2) #6 FOR CIRCUIT (SP-2), (2) #10 FOR CIRCUIT (SP-23) AND (1) #10 GROUND FROM PANEL SP TO THE BOOSTER PUMP ENCLOSURE.
  18. 3/4" W/ (4) #10 (SP-9,11,18,20) & (1) #10 GRD.
  19. 3/4" W/ (2) #10 & (1) #10 GRD.
  20. 1-1/4" W/ (4) #6 (SP-9,11,21) & (1) #8 GRD.



**ENLARGED FLAG POLE AREA**  
SCALE: 1/8" = 1'-0"

**RECORD AS-BUILTS**

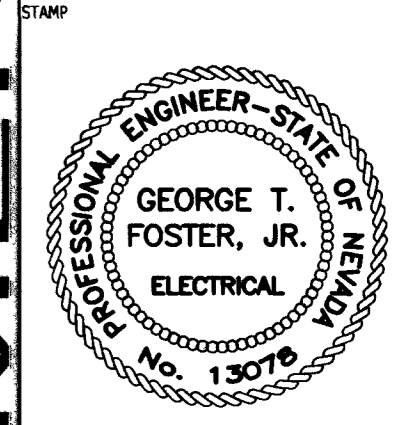
Avoid cutting underground utility lines. It's costly.  
**Call before you Dig.**  
1-800-227-2800  
UNDERGROUND SERVICE ALERT (USA)

Professional Design Associates, Inc. Engineering Solutions  
108 Market Street  
Henderson, NV 89015  
(702) 567-1022  
email: pdacorp@engineer.com



REVISIONS  
CONSULTANT  
**The WLB Group**  
WLB Group  
Engineering • Landscape Architecture  
Planning • Urban Design • Surveying  
2551 N. Green Valley Parkway, Suite 4425  
HENDERSON, NV 89014 (702) 458-2551

**REDWOOD OAKLEY PARK**  
LAS VEGAS, NEVADA  
**ELECTRICAL SITE PLAN**



OWNER: CITY OF LAS VEGAS  
DEPARTMENT OF PUBLIC WORKS  
ARCHITECTURAL SERVICES

400 EAST STEWART AVENUE  
LAS VEGAS, NEVADA 89101  
PHONE: (702) 229-6535  
FAX: (702) 382-3332  
TDD: (702) 386-9108

DRAWN	DON
FILE	21014
DATE	6-12-01
SCALE	1"=30'-0"
REV NO	-
CUV DWG NO	-
SHT NO	33

**ES2.2**

MATCHLINE  
SEE ES2.1  
FOR CONTINUATION

53089