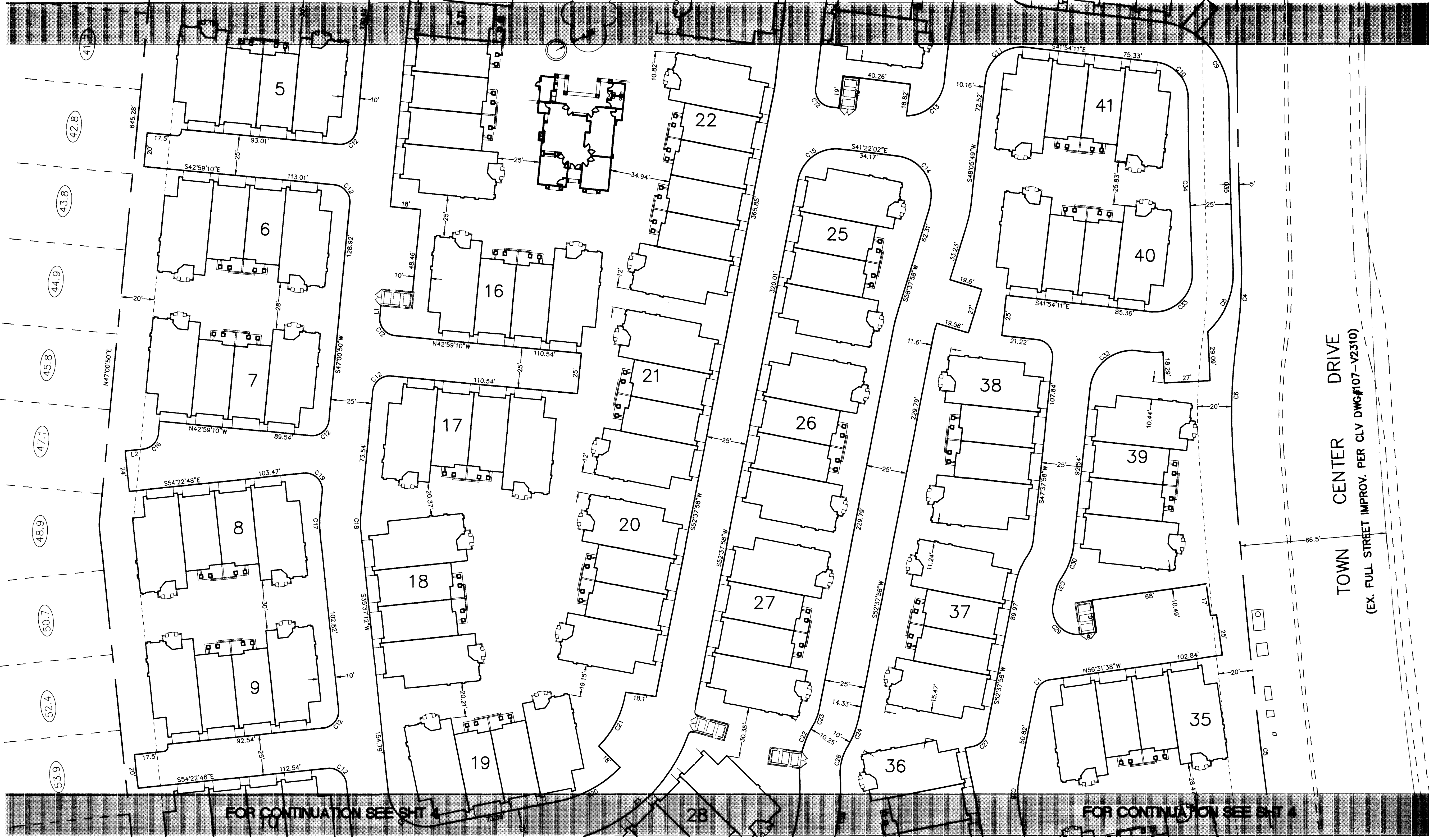


FOR CONTINUATION SEE SHT 2

FOR CONTINUATION SEE SHT 2



FOR CONTINUATION SEE SHT 4

FOR CONTINUATION SEE SHT 4

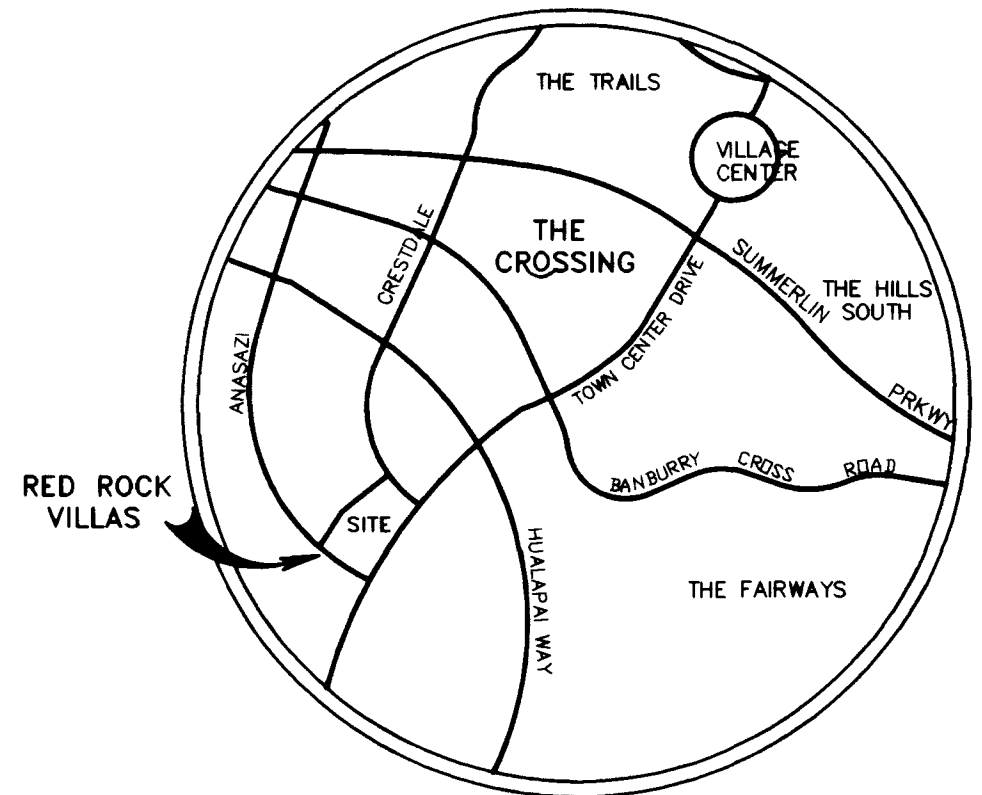
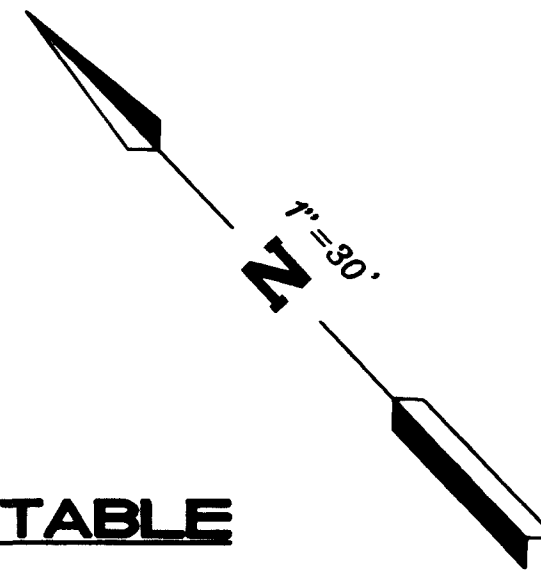
TOWN CENTER DRIVE  
(EX. FULL STREET IMPROV. PER CLV DWG#107-V2310)

**CURVE DATA TABLE**

No.	RADIUS	DELTA	LENGTH	TANGENT
C1	10'	70°50'24"	12.36'	7.11'
C2	22.5'	95°08'50"	37.36'	24.62'
C3	38'	59°29'27"	101.75'	66'
C4	272'	10°06'04"	47.95'	24.04'
C5	3586.5'	05°40'22"	355.11'	177.7'
C6	328'	11°57'07"	68.42'	34.33'
C7	3575.5'	06°05'56"	360.25'	193.3'
C8	46.5'	49°35'22"	40.25'	21.48'
C9	46.5'	54°48'29"	44.48'	24.11'
C10	22.5'	82°52'25"	32.54'	19.86'
C11	22.5'	90°00'00"	35.34'	22.5'
C12	10'	90°00'00"	15.71'	10'
C13	22.5'	83°19'17"	32.72'	20.02'
C14	22.5'	89°27'51"	35.13'	22.29'
C15	22.5'	86°00'00"	33.77'	20.98'
C16	10'	78°36'22"	13.72'	8.19'
C17	74'	11°23'38"	14.72'	7.38'
C18	50'	11°23'38"	9.94'	4.99'
C19	10'	101°23'38"	17.7'	12.22'
C20	74'	33°55'12"	43.81'	22.57'
C21	56'	33°55'12"	33.15'	17.08'
C22	54'	17°22'57"	16.38'	8.25'
C23	30'	20°13'32"	10.59'	5.35'
C24	54'	20°13'32"	19.06'	9.63'
C25	124'	22°23'19"	48.45'	24.54'
C26	30'	34°28'40"	18.05'	9.31'
C27	10'	67°50'24"	11.84'	6.72'
C28	50'	22°09'36"	19.34'	9.79'
C29	15'	109°09'36"	28.58'	21.09'
C30	44'	28°43'50"	22.06'	11.27'
C31	20'	23°43'50"	8.28'	4.2'
C32	25'	94°29'07"	41.23'	27.04'
C33	22.5'	98°44'58"	38.78'	26.23'
C34	3604.5'	01°37'22"	102.11'	51.05'
C35	3580.5'	01°40'08"	104.3'	52.15'

**LINE DATA TABLE**

No.	BEARING	DISTANCE
L1	S47°00'50"W	6.58'
L2	S54°22'48"E	10.79'



**LOCATION MAP**

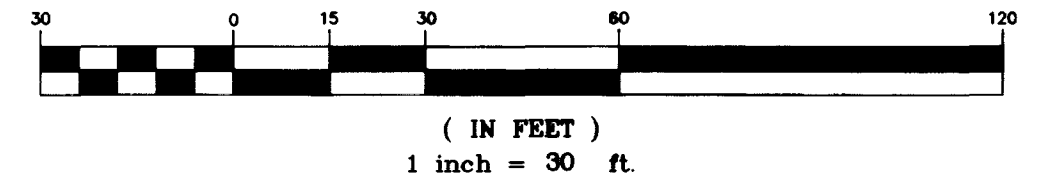
**BENCHMARK**

CONTROL POINT "SPANKY" - A BRASS CAP SET IN CONCRETE STAMPED "42", SET BY G.C. WALLACE AND USED AS A BENCHMARK FOR SUMMERLIN CONSTRUCTION.  
ELEV. 861.1775 METERS. (2825.38 U.S. SURVEY FEET (SUMMERLIN DATUM))  
METERS X (3937 / 1200) = U.S. SURVEY FEET  
ELEVATION EQUATION: SUMMERLIN ELEV. +2.437 = NAVD 88

**BASIS OF BEARING**

N 01° 12' 43" E IS BASED ON THE NEVADA GRID SYSTEM (EAST ZONE) AS DETERMINED BY THE TRIANGULATION POINTS "REDROCK" TO "LONE MOUNTAIN".

**GRAPHIC SCALE**



PROJECT: **RED ROCK VILLAS**  
TITLE: **HORIZONTAL CONTROL PLAN CENTRAL**

DATE: 7/17/97  
SCALE: 1"=30'

APPROVED: [Signature]  
DATE: [ ]  
REVISION: [ ]

ALPHA ENGINEERING COMPANY  
1000 S. HARRISON AVE., SUITE 100  
LAS VEGAS, NV 89102

JOB NO.: 715301  
NAME: RCV  
DATE: 7/17/97  
SCALE: 1"=30'

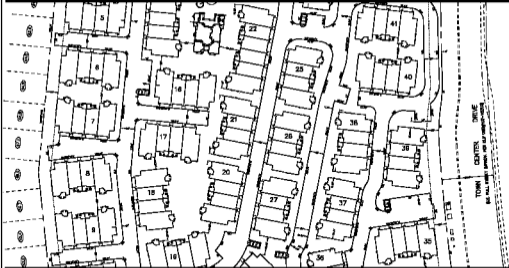
PAGE: **3**  
OF: 11

C:\V\A\X\IND\6\715301\715301.dwg Plot Date: 16:15:28 1997 Plotted by: Minnie

1468

107-V2708

DRAWING NO.: 715301GP



CLUMP DATA TABLE

1	2	3	4	5	6	7	8	9	10	11	12	13	14	15	16	17	18	19	20	21	22	23	24	25	26	27	28	29	30	31	32	33	34	35	36	37	38	39	40	41
---	---	---	---	---	---	---	---	---	----	----	----	----	----	----	----	----	----	----	----	----	----	----	----	----	----	----	----	----	----	----	----	----	----	----	----	----	----	----	----	----

LINE DATA TABLE



LOCATION MAP

FINISH-BASE

1. 1/2" THICK POLYURETHANE FINISH  
 2. 1/2" THICK POLYURETHANE FINISH  
 3. 1/2" THICK POLYURETHANE FINISH  
 4. 1/2" THICK POLYURETHANE FINISH  
 5. 1/2" THICK POLYURETHANE FINISH  
 6. 1/2" THICK POLYURETHANE FINISH  
 7. 1/2" THICK POLYURETHANE FINISH  
 8. 1/2" THICK POLYURETHANE FINISH  
 9. 1/2" THICK POLYURETHANE FINISH  
 10. 1/2" THICK POLYURETHANE FINISH  
 11. 1/2" THICK POLYURETHANE FINISH  
 12. 1/2" THICK POLYURETHANE FINISH  
 13. 1/2" THICK POLYURETHANE FINISH  
 14. 1/2" THICK POLYURETHANE FINISH  
 15. 1/2" THICK POLYURETHANE FINISH  
 16. 1/2" THICK POLYURETHANE FINISH  
 17. 1/2" THICK POLYURETHANE FINISH  
 18. 1/2" THICK POLYURETHANE FINISH  
 19. 1/2" THICK POLYURETHANE FINISH  
 20. 1/2" THICK POLYURETHANE FINISH  
 21. 1/2" THICK POLYURETHANE FINISH  
 22. 1/2" THICK POLYURETHANE FINISH  
 23. 1/2" THICK POLYURETHANE FINISH  
 24. 1/2" THICK POLYURETHANE FINISH  
 25. 1/2" THICK POLYURETHANE FINISH  
 26. 1/2" THICK POLYURETHANE FINISH  
 27. 1/2" THICK POLYURETHANE FINISH  
 28. 1/2" THICK POLYURETHANE FINISH  
 29. 1/2" THICK POLYURETHANE FINISH  
 30. 1/2" THICK POLYURETHANE FINISH  
 31. 1/2" THICK POLYURETHANE FINISH  
 32. 1/2" THICK POLYURETHANE FINISH  
 33. 1/2" THICK POLYURETHANE FINISH  
 34. 1/2" THICK POLYURETHANE FINISH  
 35. 1/2" THICK POLYURETHANE FINISH  
 36. 1/2" THICK POLYURETHANE FINISH  
 37. 1/2" THICK POLYURETHANE FINISH  
 38. 1/2" THICK POLYURETHANE FINISH  
 39. 1/2" THICK POLYURETHANE FINISH  
 40. 1/2" THICK POLYURETHANE FINISH  
 41. 1/2" THICK POLYURETHANE FINISH

BASE OF FINISH



RED ROCK VILLAS  
 HORIZONTAL CONTROL PLAN  
 CENTRAL