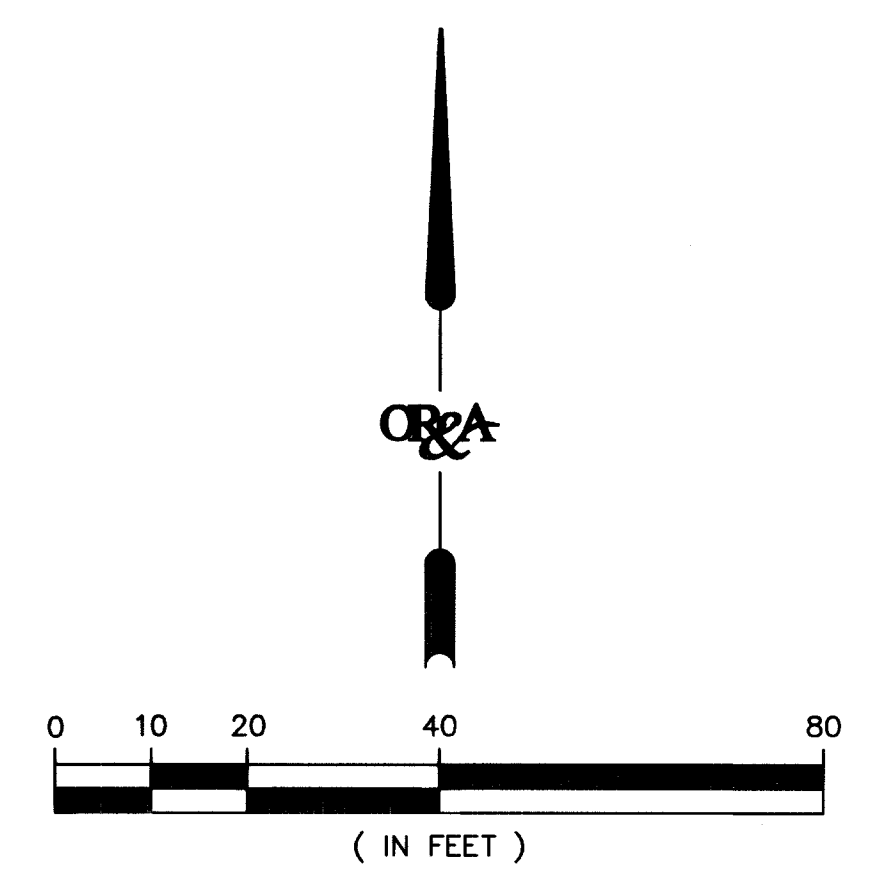


| CENTERLINE CURVE TABLE |          |         |           |         |
|------------------------|----------|---------|-----------|---------|
| CURVE                  | RADIUS   | LENGTH  | DELTA     | TANGENT |
| C1                     | 2075.00' | 406.52' | 111°3'30" | 203.91' |
| C2                     | 2075.00' | 384.15' | 10°36'26" | 192.62' |
| C3                     | 1375.00' | 252.21' | 10°30'34" | 126.46' |

| LONG CHORD TABLE |             |          |
|------------------|-------------|----------|
| LINE             | BEARING     | DISTANCE |
| L1               | S89°38'17"E | 405.86'  |
| L2               | S78°43'20"E | 383.60'  |
| L3               | N04°07'21"E | 251.86'  |

| BACK OF CURB CURVE TABLE |        |        |           |         |
|--------------------------|--------|--------|-----------|---------|
| CURVE                    | RADIUS | LENGTH | DELTA     | TANGENT |
| C4                       | 33.00' | 26.18' | 45°27'09" | 13.82'  |
| C5                       | 51.00' | 65.28' | 73°20'01" | 37.97'  |
| C6                       | 33.00' | 25.93' | 45°01'12" | 13.68'  |

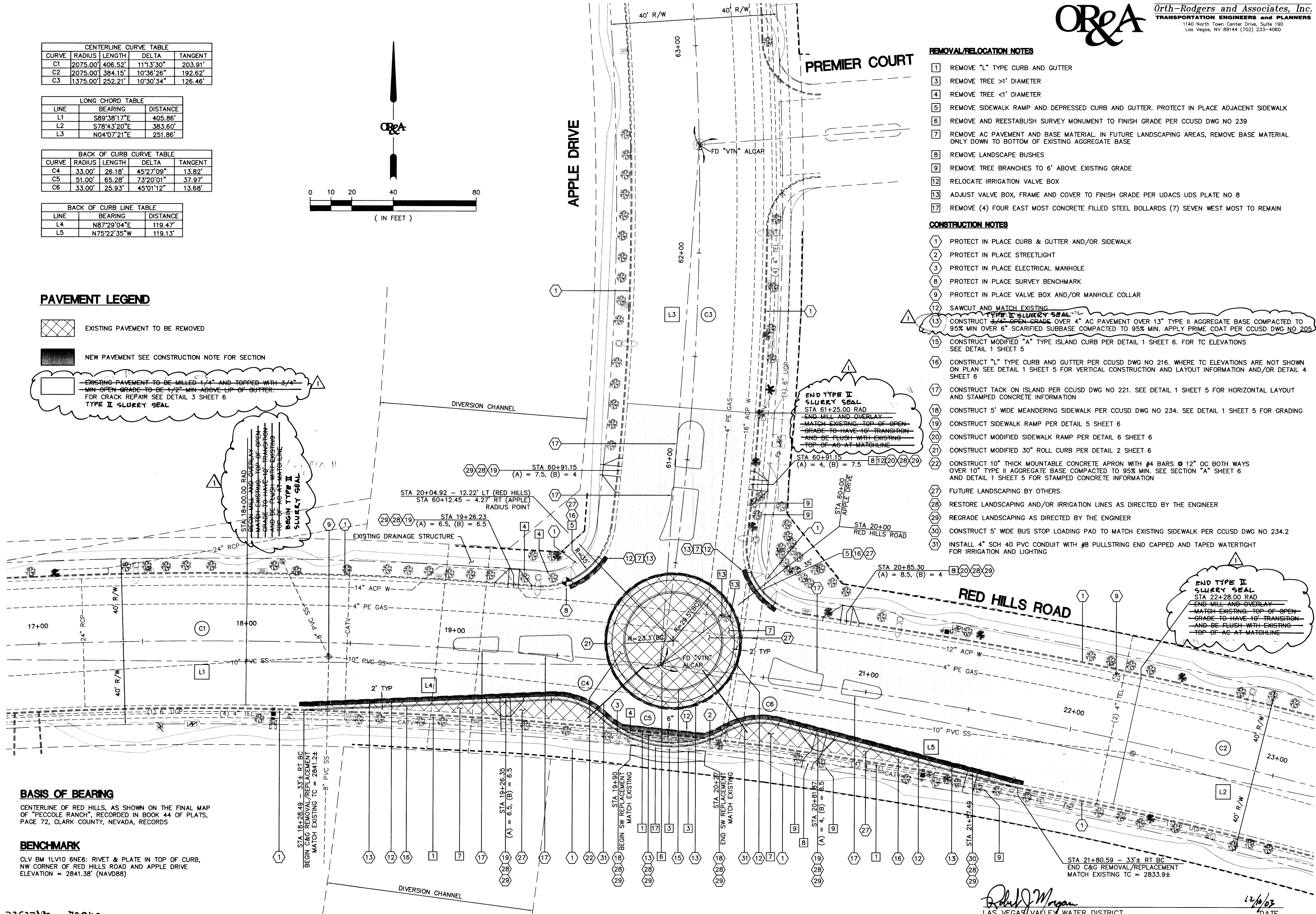
| BACK OF CURB LINE TABLE |             |          |
|-------------------------|-------------|----------|
| LINE                    | BEARING     | DISTANCE |
| L4                      | N87°29'04"E | 119.47'  |
| L5                      | N75°22'35"W | 119.13'  |



**PAVEMENT LEGEND**

- EXISTING PAVEMENT TO BE REMOVED
- NEW PAVEMENT SEE CONSTRUCTION NOTE FOR SECTION

EXISTING PAVEMENT TO BE MILLED 1/4" AND TOPPED WITH 3/4" MIN OPEN GRADE TO BE 1/2" MIN ABOVE LIP OF GUTTER. FOR CRACK REPAIR SEE DETAIL 3 SHEET 6  
**TYPE II SLURRY SEAL**



**REMOVAL/RELOCATION NOTES**

- 1 REMOVE "L" TYPE CURB AND GUTTER
- 3 REMOVE TREE >1" DIAMETER
- 4 REMOVE TREE <1" DIAMETER
- 5 REMOVE SIDEWALK RAMP AND DEPRESSED CURB AND GUTTER. PROTECT IN PLACE ADJACENT SIDEWALK
- 6 REMOVE AND REESTABLISH SURVEY MONUMENT TO FINISH GRADE PER CCUSD DWG NO 239
- 7 REMOVE AC PAVEMENT AND BASE MATERIAL. IN FUTURE LANDSCAPING AREAS, REMOVE BASE MATERIAL ONLY DOWN TO BOTTOM OF EXISTING AGGREGATE BASE
- 8 REMOVE LANDSCAPE BUSHES
- 9 REMOVE TREE BRANCHES TO 6' ABOVE EXISTING GRADE
- 12 RELOCATE IRRIGATION VALVE BOX
- 13 ADJUST VALVE BOX, FRAME AND COVER TO FINISH GRADE PER UDACS UDS PLATE NO 8
- 17 REMOVE (4) FOUR EAST MOST CONCRETE FILLED STEEL BOLLARDS (7) SEVEN WEST MOST TO REMAIN

**CONSTRUCTION NOTES**

- 1 PROTECT IN PLACE CURB & GUTTER AND/OR SIDEWALK
- 2 PROTECT IN PLACE STREETLIGHT
- 3 PROTECT IN PLACE ELECTRICAL MANHOLE
- 8 PROTECT IN PLACE SURVEY BENCHMARK
- 9 PROTECT IN PLACE VALVE BOX AND/OR MANHOLE COLLAR
- 12 SAWCUT AND MATCH EXISTING
- 13 CONSTRUCT 4" OPEN GRADE OVER 4" AC PAVEMENT OVER 13" TYPE II AGGREGATE BASE COMPACTED TO 95% MIN OVER 6" SCARIFIED SUBBASE COMPACTED TO 95% MIN. APPLY PRIME COAT PER CCUSD DWG NO 205
- 15 CONSTRUCT MODIFIED "A" TYPE ISLAND CURB PER DETAIL 1 SHEET 6. FOR TC ELEVATIONS SEE DETAIL 1 SHEET 5
- 16 CONSTRUCT "L" TYPE CURB AND GUTTER PER CCUSD DWG NO 216. WHERE TC ELEVATIONS ARE NOT SHOWN ON PLAN SEE DETAIL 1 SHEET 5 FOR VERTICAL CONSTRUCTION AND LAYOUT INFORMATION AND/OR DETAIL 4 SHEET 6
- 17 CONSTRUCT TACK ON ISLAND PER CCUSD DWG NO 221. SEE DETAIL 1 SHEET 5 FOR HORIZONTAL LAYOUT AND STAMPED CONCRETE INFORMATION
- 18 CONSTRUCT 5' WIDE MEANDERING SIDEWALK PER CCUSD DWG NO 234. SEE DETAIL 1 SHEET 5 FOR GRADING
- 19 CONSTRUCT SIDEWALK RAMP PER DETAIL 5 SHEET 6
- 20 CONSTRUCT MODIFIED SIDEWALK RAMP PER DETAIL 6 SHEET 6
- 21 CONSTRUCT MODIFIED 30" ROLL CURB PER DETAIL 2 SHEET 6
- 22 CONSTRUCT 10" THICK MOUNTABLE CONCRETE APRON WITH #4 BARS @ 12" OC BOTH WAYS OVER 10" TYPE II AGGREGATE BASE COMPACTED TO 95% MIN. SEE SECTION "A" SHEET 6 AND DETAIL 1 SHEET 5 FOR STAMPED CONCRETE INFORMATION
- 27 FUTURE LANDSCAPING BY OTHERS
- 28 RESTORE LANDSCAPING AND/OR IRRIGATION LINES AS DIRECTED BY THE ENGINEER
- 29 REGRADE LANDSCAPING AS DIRECTED BY THE ENGINEER
- 30 CONSTRUCT 5' WIDE BUS STOP LOADING PAD TO MATCH EXISTING SIDEWALK PER CCUSD DWG NO 234.2
- 31 INSTALL 4" SCH 40 PVC CONDUIT WITH #8 PULLSTRING END CAPPED AND TAPED WATERTIGHT FOR IRRIGATION AND LIGHTING

**BASIS OF BEARING**  
 CENTERLINE OF RED HILLS, AS SHOWN ON THE FINAL MAP OF "PECCOLE RANCH", RECORDED IN BOOK 44 OF PLATS, PAGE 72, CLARK COUNTY, NEVADA, RECORDS

**BENCHMARK**  
 CLV BM 1LV10 6NE6: RIVET & PLATE IN TOP OF CURB, NW CORNER OF RED HILLS ROAD AND APPLE DRIVE ELEVATION = 2841.38' (NAVD88)

*David Morgan*  
 LAS VEGAS VALLEY WATER DISTRICT  
 DATE: 12/10/03

7353789 73940

REVISIONS

| NO. | DATE | DESCRIPTION |
|-----|------|-------------|
|     |      |             |

REVISION BY: CLV

APP'D

DEPARTMENT OF PUBLIC WORKS  
 ENGINEERING DESIGN SECTION

CITY ENGINEER: CHARLES KAWOWSKI, JR., P.E.  
 PROGRAM MANAGER: TOM HATES, P.E.  
 DESIGNED BY: J.L.J.R. HORIZONTAL SCALE: AS SHOWN  
 DRAWN BY: J.R. VERTICAL SCALE: NONE  
 CHECKED BY: B.T.R.R. DATE: 11/07/03

TITLE: MODIFICATION OF RED HILLS ROAD AND APPLE DRIVE INTERSECTION  
 SHEET: ROADWAY IMPROVEMENTS

Sheet 3 of 6  
 DRAWING NO. 107-V3793

BID NO. 05.1730.12  
 PACKAGE No. 2