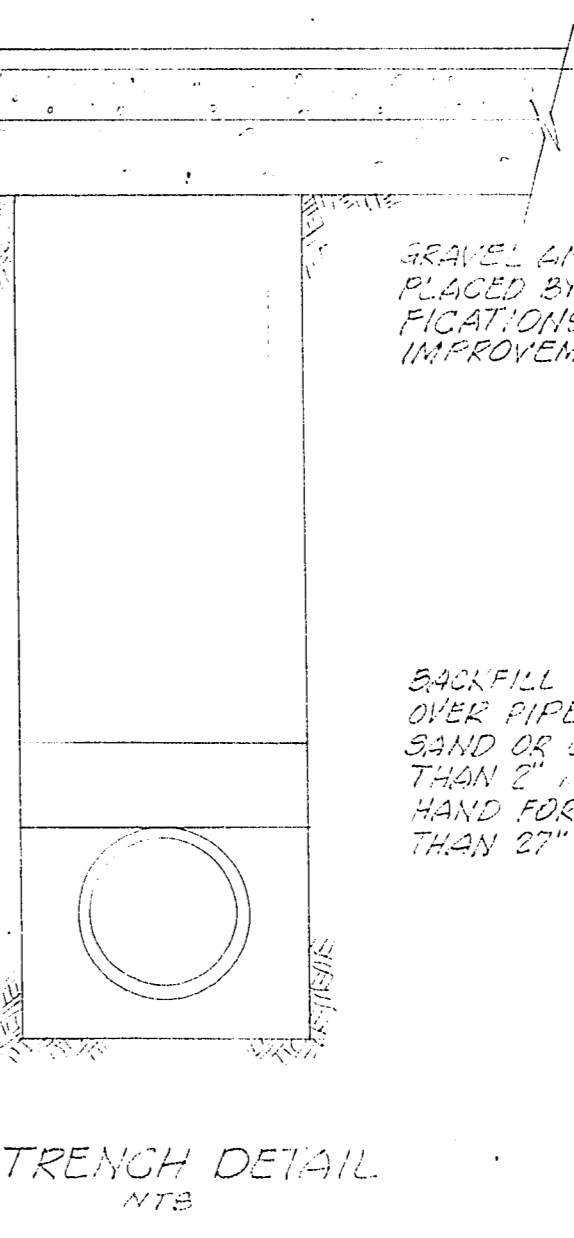
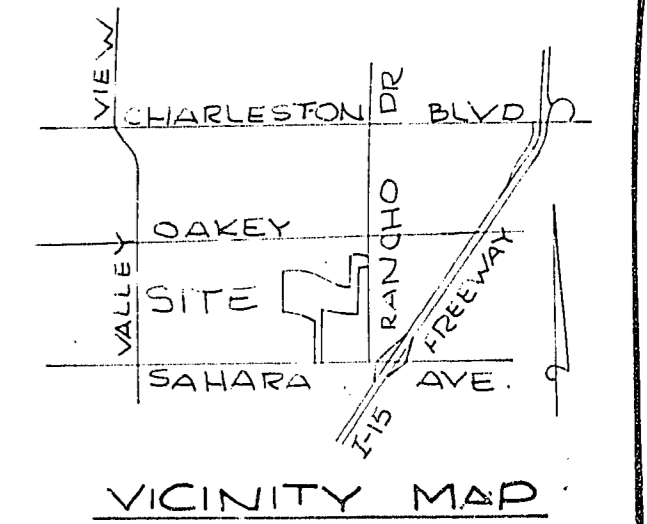


BACKFILL SHALL BE ANY EXCAVATED IMPORTED OR TRANSPORTED MATERIAL WHICH IS FREE FROM LARGE LUMPS GREATER THAN 3\"/>



GRAVEL AND PAVEMENT TO BE PLACED BY OTHERS TO SPECIFICATIONS SHOWN ON IMPROVEMENT PLANS.

BACKFILL FOR 6\"/>



QUANTITY ESTIMATES

STANDARD MANHOLE	3 EA.
8\"/>	
4\"/>	
4\"/>	

APPROVED

CITY ENGINEER DATE

CLV SANITATION ENGINEER DATE

CLV FIELD OPERATIONS ENGINEER DATE

CLV QUALITY CONTROL ENGINEER DATE

SUBMITTED BY

JAMES L. MACFARLANE P.E. DATE 11/15/79
NEV. CERT. N° 3572

- GENERAL NOTES:**
- HOUSE SERVICES SHALL COMPLY WITH THE BUILDING CODE AS THE SEPARATION DISTANCE.
 - ALL HOUSES TO BE SERVED INDIVIDUALLY AT THE LOCATION SET OF THE UNIFORM PLUMBING CODE.
 - CONTRACTOR SHALL FURNISH THE ENGINEER WITH AN OBJECT DRAWINGS SHOWING THE EXACT LOCATION OF ALL HOUSE CONNECTIONS.
 - CONCRETE COLLARS TO BE CONSTRUCTED AT ALL MANHOLES AND WATER VALVES.
 - CHISEL S OR G WHEREVER SEEN OR HEARD TO BE BASE UNDER CURB.

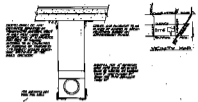
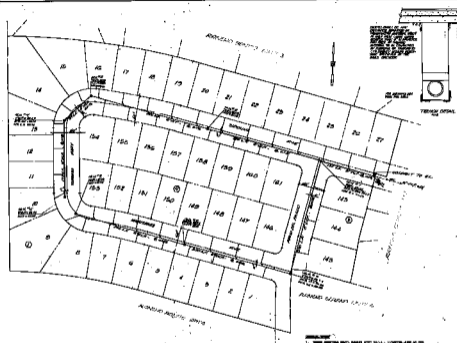
VTN CONSULTING ENGINEERS • PLANNERS
2109 PINEHURST BLVD. LAS VEGAS, NEVADA 89105
702-735-8127

RANCHO SERENO - UNIT 3

MASTER SEWER PLAN

SCALE: 1" = 40'	WO. NO. 2547-3	DATE 11/15/79	SHEET	OF
HORIZ:	DES.	REV.	4	9
VERT:	CHK.	REV.		

Revised lots & laterals - 9-24-80 RJH



QUANTITY ESTIMATES

STANDARD APPROX.	1.00
STANDARD APPROX.	1.00
STANDARD APPROX.	1.00
STANDARD APPROX.	1.00



- NOTES:**
1. THIS PLAN IS FOR THE MASTER SENIOR PLAN FOR THE RUNWAY SQUADRON - UNIT #.
 2. ALL ROOMS ARE TO BE CONSTRUCTED IN ACCORDANCE WITH THE ARCHITECTURAL SPECIFICATIONS.
 3. THE ARCHITECTURAL SPECIFICATIONS ARE TO BE USED IN CONJUNCTION WITH THIS PLAN.
 4. THE ARCHITECTURAL SPECIFICATIONS ARE TO BE USED IN CONJUNCTION WITH THIS PLAN.
 5. THE ARCHITECTURAL SPECIFICATIONS ARE TO BE USED IN CONJUNCTION WITH THIS PLAN.

SUBMITTED BY:

[Signature]

DATE: 11/1/54

SCALE: 1/4" = 1'-0"

PROJECT: RUNWAY SQUADRON - UNIT #

MASTER SENIOR PLAN

NO.: 11/1/54

DATE: 11/1/54

SCALE: 1/4" = 1'-0"