

SEE SHEET SD-01
MATCHLINE
"RCB" 47+50.00

SEE SHEET SD-03
MATCHLINE
"RCB" 56+50.00

- ### CONSTRUCTION NOTES
- CONSTRUCT 60" TYPE III MANHOLE WITH TYPE IA RISER (USDCCA STD. DWG. NO. 406.1 AND 404.1)
 - CONSTRUCT 60" TYPE III MANHOLE (USDCCA STD. DWG. NO. 406.1)
 - CONSTRUCT 48" ACCESS MANHOLE (SEE DETAIL 2, SHEET SD-08)
 - INSTALL 18" RCP (USDCCA STD. DWG. NO. 503.2 AND DETAILS ON SHEET SD-06)
 - INSTALL 24" RCP (USDCCA STD. DWG. NO. 503.2 AND DETAILS ON SHEET SD-06)
 - INSTALL 29" X 45" HERCP (USDCCA STD. DWG. NO. 503.2 AND DETAILS ON SHEET SD-06)
 - INSTALL 36" RCP (USDCCA STD. DWG. NO. 503.2 AND DETAILS ON SHEET SD-06)
 - CONSTRUCT 7' X 6' PRECAST RCB (SEE DETAILS ON SHEET SD-06)
 - CONSTRUCT SPECIAL DROP INLET W/ CONCRETE APRON (SEE DETAIL 1, SHEET SD-07 AND SHEET SD-09)
 - CONSTRUCT MODIFIED TYPE DM2 DROP INLET (SEE DETAIL 1, SHEET SD-11)
 - CONSTRUCT RCB PLUG (SEE DETAIL 4, SHEET SD-08)
 - CONSTRUCT CONCRETE COLLAR (SEE DETAIL 3, SHEET SD-08)
 - ADJUST 2" MANUAL BLOW-OFF TO FINISHED GRADE (UDACS PLATE NO. 36)
 - ADJUST WATER VALVE BOX TO FINISHED GRADE (UDACS PLATE NO. 39) VALVE SHALL BE ACCESSIBLE AT ALL TIMES
 - ADJUST SANITARY SEWER MANHOLE TO FINISHED GRADE (DCSWCS STD. DWG. SD-5)
 - ADJUST ELECTRIC MANHOLE TO FINISHED GRADE
 - SET TYPE I WELL MONUMENT
 - CONSTRUCT 2" PBS OVERLAY
 - CONSTRUCT 5" PBS OVER 4" TYPE II AGGREGATE BASE

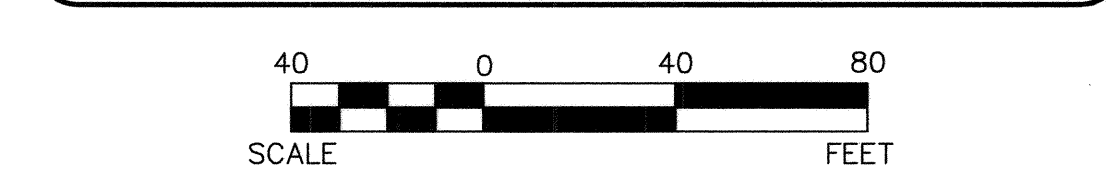
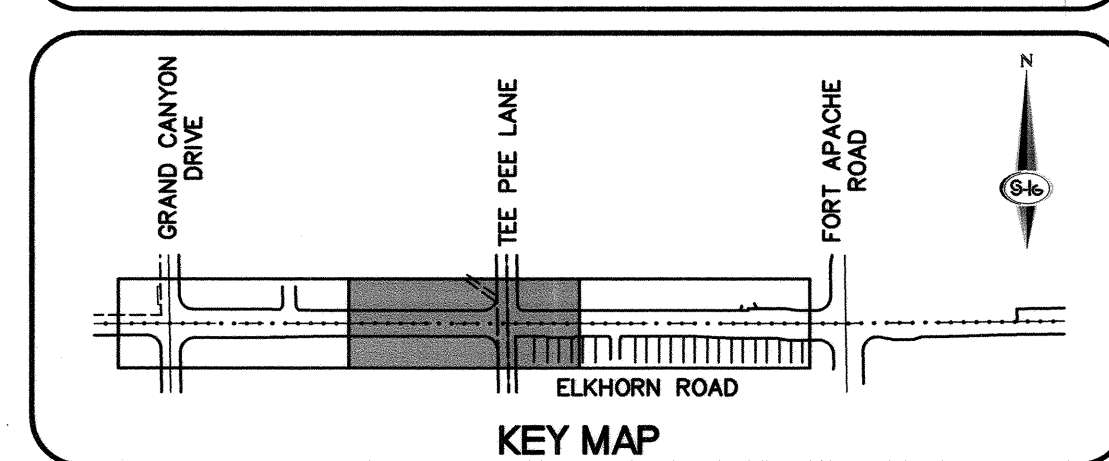
- ### STORM DRAIN GENERAL NOTES:
- ALL PIPE LENGTHS MEASURED ALONG PIPE CENTERLINE TO CENTER OF MANHOLE OR GRADE BREAK OR TO INSIDE EDGE OF DI, RCB, OR STRUCTURE.
 - ALL DROP INLETS AND CONCRETE APRONS SHALL INCLUDE STORM WATER MANAGEMENT STAMP AND DETAIL PER USDCCA STD. DWG. NO. 421
 - ALL STORM DRAIN SHALL BE CLASS III UNLESS OTHERWISE NOTED.
 - NV ENERGY, CENTURYLINK TELEPHONE, AND SOUTHWEST GAS SHOWN FOR INFORMATIONAL ONLY. REFERENCE NV ENERGY, CENTURYLINK TELEPHONE, AND SOUTHWEST GAS DRAWINGS FOR CONSTRUCTION DETAILS. CONTRACTOR TO COORDINATE WITH UTILITIES FOR REMOVAL AND INSTALLATION OF FACILITIES.
 - ALL EXISTING UTILITY LOCATIONS SHOWN HEREON ARE APPROXIMATE ONLY. IT SHALL BE THE CONTRACTORS RESPONSIBILITY TO DETERMINE THE EXACT VERTICAL AND HORIZONTAL LOCATION OF ALL EXISTING UNDERGROUND UTILITIES PRIOR TO COMMENCING CONSTRUCTION. NO REPRESENTATION IS MADE THAT ALL UTILITIES ARE SHOWN HEREON. THE ENGINEER ASSUMES NO RESPONSIBILITY FOR UTILITIES NOT SHOWN IN THEIR PROPER LOCATION. THE DEPTH BELOW GRADE OF THE VARIOUS UTILITIES DEPICTED ON THE PLANS VARIES THROUGHOUT THE PROJECT AREA. THE CONTRACTOR SHALL EXERCISE EXTREME CARE WHERE EXCAVATING AND GRADING THE SUBBASE IN THE VICINITY OF UTILITIES TO AVOID DAMAGE TO THE LATTER.
 - ALL EXISTING UTILITIES SHALL BE PROTECTED IN PLACE UNLESS OTHERWISE NOTED.
 - SEE G-05 FOR RCB GEOMETRY AND R-SHEETS FOR REMOVAL INFORMATION.

LEGEND

	2" PBS OVERLAY		5" PBS OVER 4" TYPE II AGGREGATE BASE
--	----------------	--	---------------------------------------

LATERAL RUN PROFILE INDEX

LATERAL RUN NO	SEE SHEET
1 THRU 5	SD-04
6 THRU 8	SD-05



Call before you Dig
1-702-432-5300

Call before you Dig
1-800-227-2600

Call before you Dig
1-702-227-2929

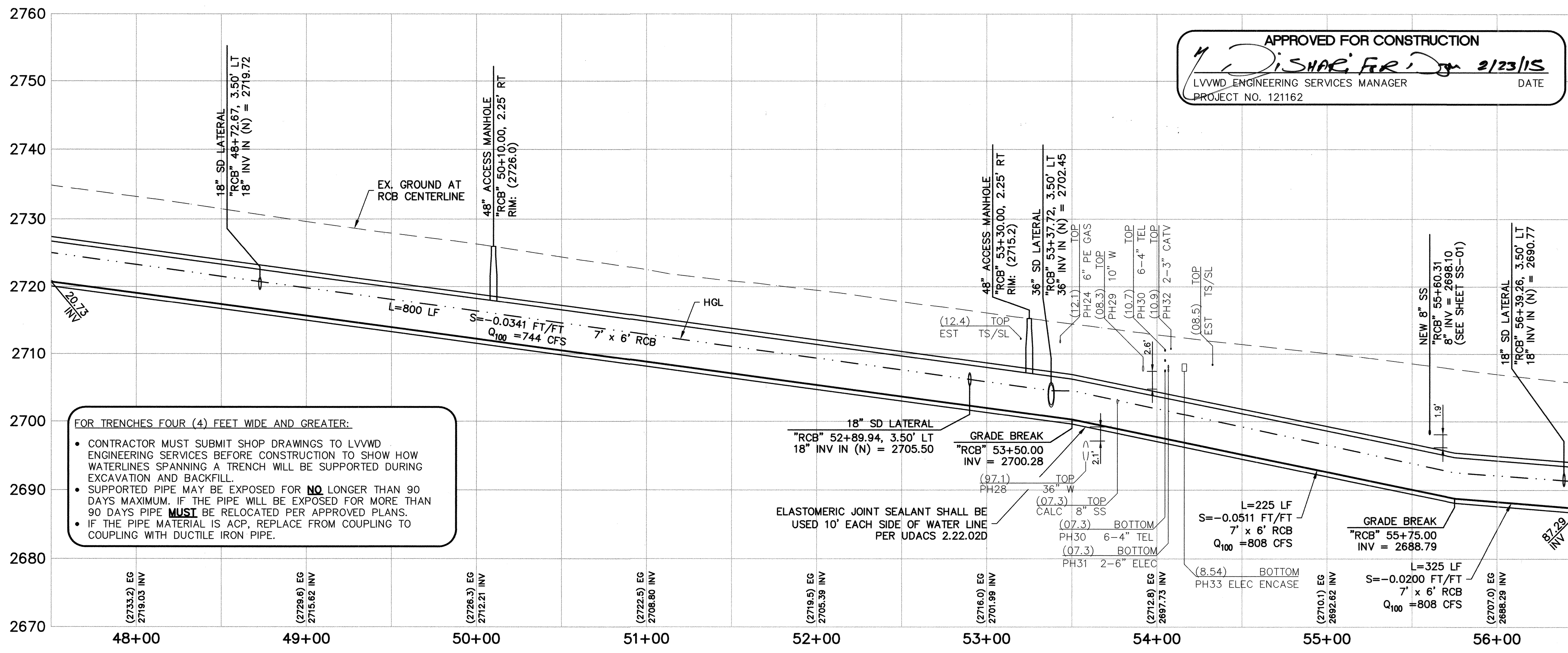
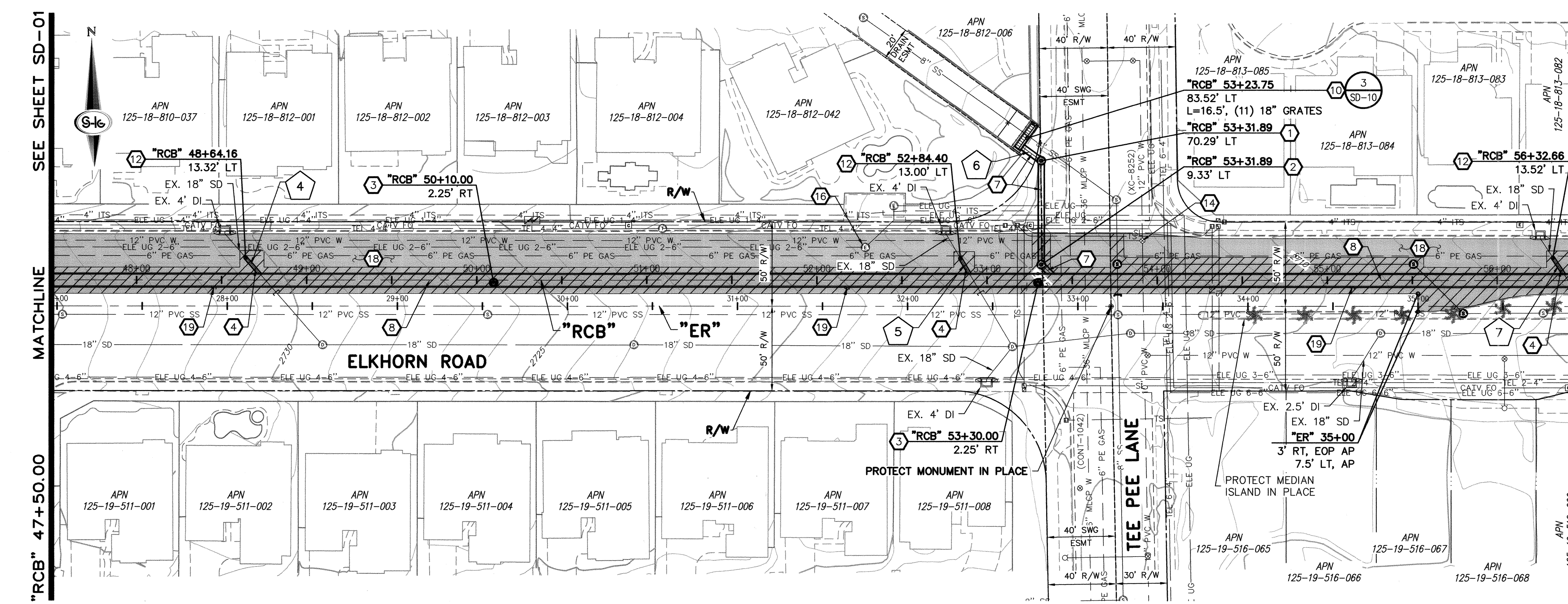
REVISIONS

NO.	DATE	DESCRIPTION	APP'D

DEPARTMENT OF PUBLIC WORKS
CAPITAL PROJECT MANAGEMENT
 CITY ENGINEER: ALLEN E. BANELKA, P.E.
 PROGRAM MANAGER: MARK SORENSEN, P.E.
 DESIGNED BY: JSR
 DRAWN BY: JAS
 CHECKED BY: MJF
 DATE: 1/30/15

RANCHO ROAD SYSTEM
ELKHORN - FT APACHE TO GRAND CANYON
STORM DRAIN PLAN AND PROFILE
"RCB" 47+50.00 TO "RCB" 56+50.00

TITLE: SHEET: **SD-02**
 10 of 22
 DRAWING NO. 327V290



2670 2680 2690 2700 2710 2720 2730 2740 2750 2760

48+00 49+00 50+00 51+00 52+00 53+00 54+00 55+00 56+00

P:\121162\121162.dwg, 1/30/15, 1:58:44 PM, jmf