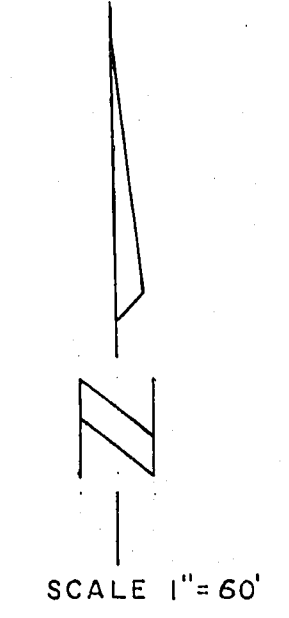
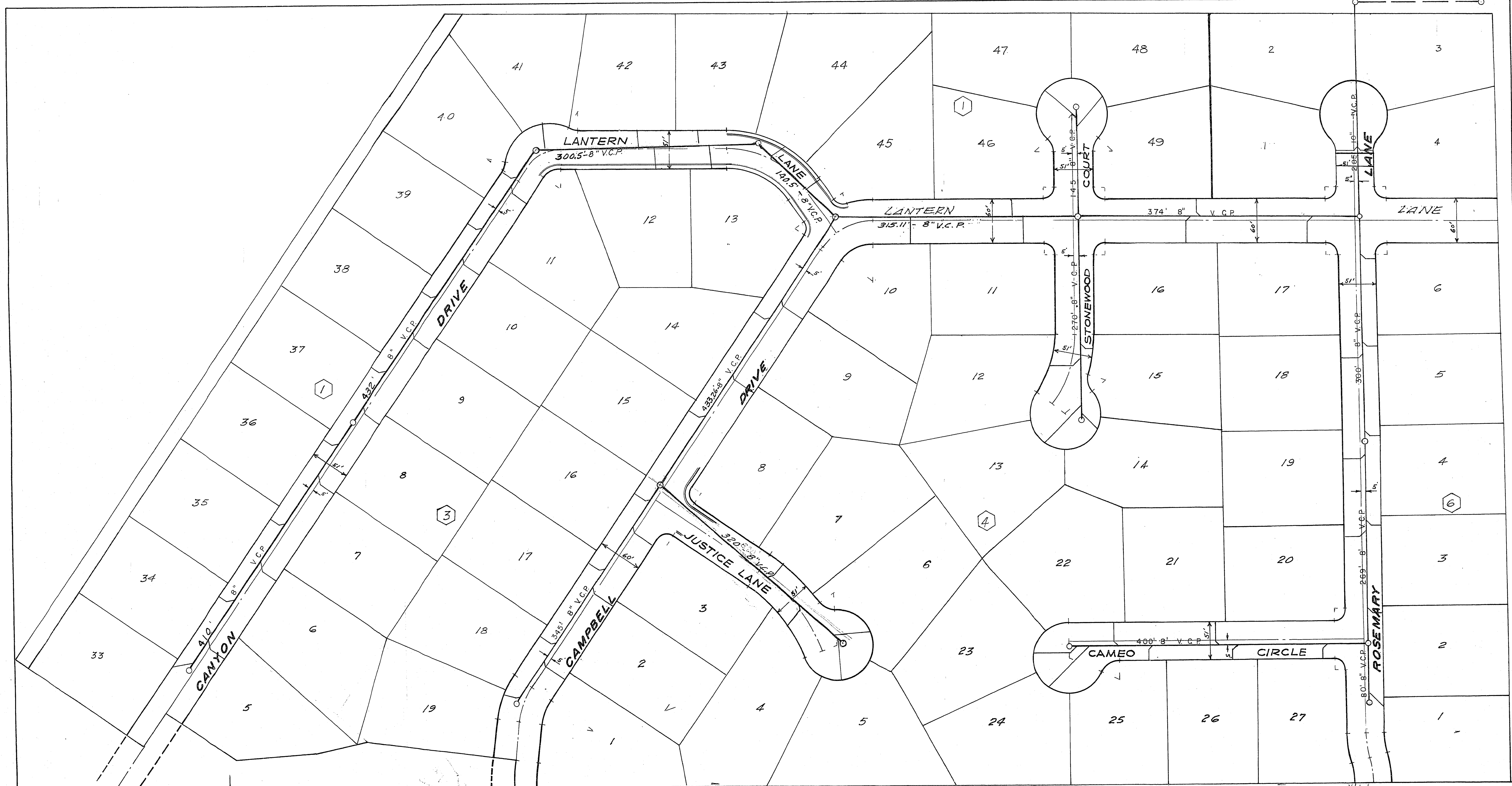


SEE SHT. 11 FOR OFF SITE  
169 10" V.C.P.



NOTE:  
ACTUAL LOCATION OF LATERALS SHALL BE DETERMINED AT TIME OF CONSTRUCTION.  
AT ALL INVERTS, IF DEPTH GREATER THAN 5' A DROP M.H. SHALL BE CONSTRUCTED.  
For offsite sewer, see sheet 11 of 14.

**ESTIMATED QUANTITIES**

8" V.C.P.	4535 LIN. FT.
10" V.C.P.	737 LIN. FT.
12" V.C.P.	400 LIN. FT.
MAN HOLES	21
10' I.A. CLASS 150	16 LIN. FT.

**RANCHO NEVADA ESTATES #2**

**SEWER PLAN**

Designed <i>JK</i>	TROJAN ENGINEERING, INC. 900 W. BOHANZA RD., SUITE 100 LAS VEGAS, NEVADA	Sheet 12
Drawn <i>GB</i>		of 14
Checked <i>Ressler</i>		Approved <i>[Signature]</i> Date 10/16/65

104401-C-382 307425752