

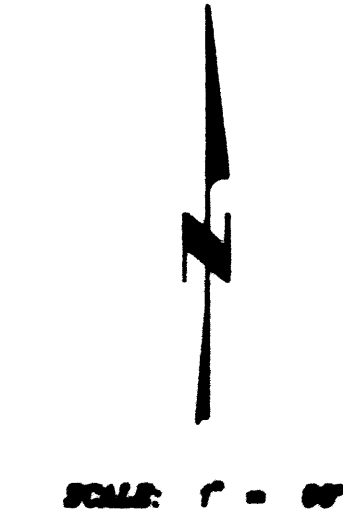
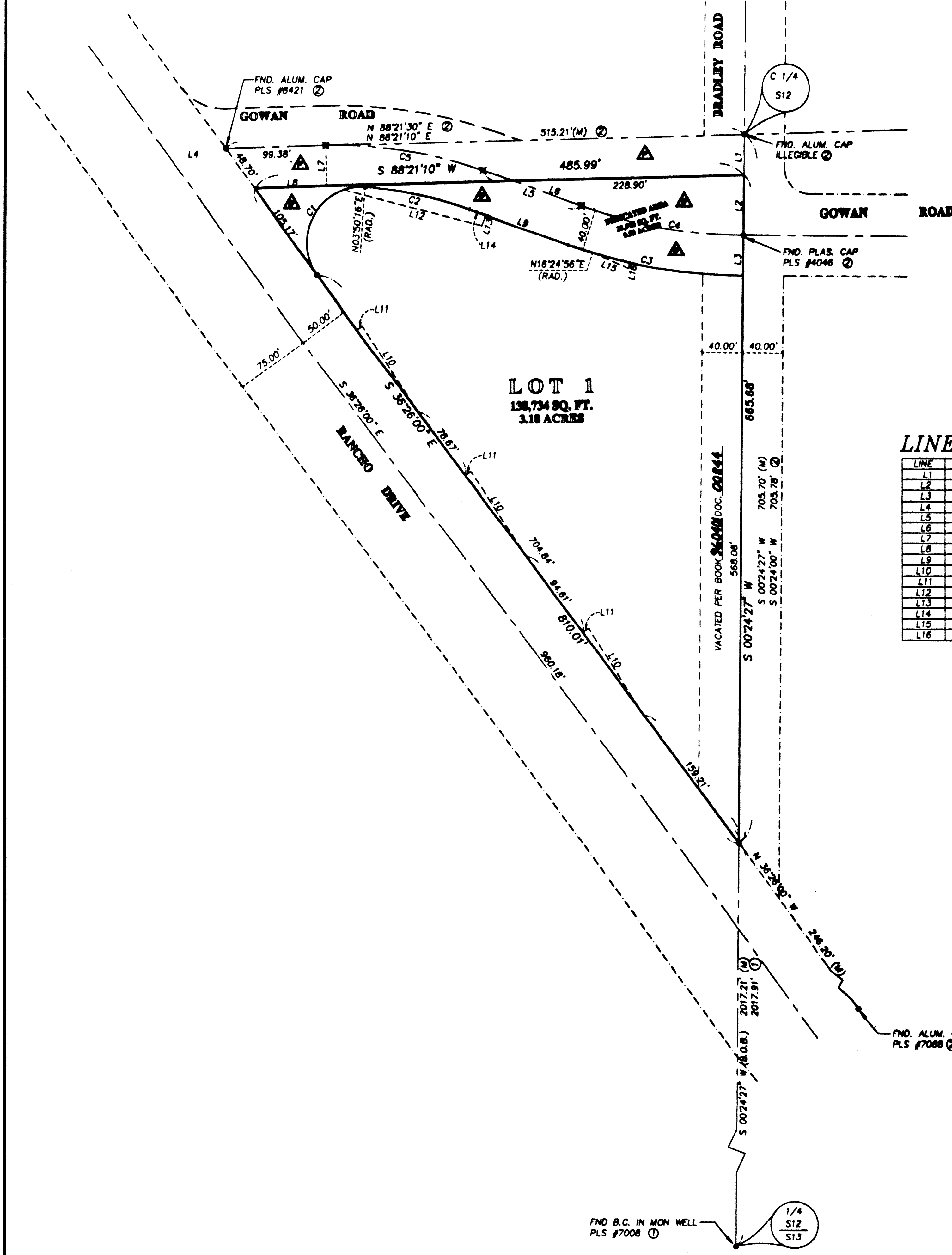
960410

01607

# RANCHO GOWAN COMMERCIAL CENTER

(A COMMERCIAL SUBDIVISION)

BEING A PORTION OF THE NORTHEAST QUARTER (NE 1/4) OF THE  
SOUTHWEST QUARTER (SW 1/4) OF SECTION 12, TOWNSHIP 20 SOUTH,  
RANGE 80 EAST, M.D.M., CITY OF LAS VEGAS,  
CLARK COUNTY, NEVADA.



FND. B.C. IN MON WELL PLS #7008 ①

1/4 S12 S13

**SUN SURVEY**

5025 S. Eastern Avenue, Suite 24  
Las Vegas, Nevada 89119  
Tel 702-597-2434  
Fax 702-597-2438

**SHEET 2 OF 2 SHEETS**