

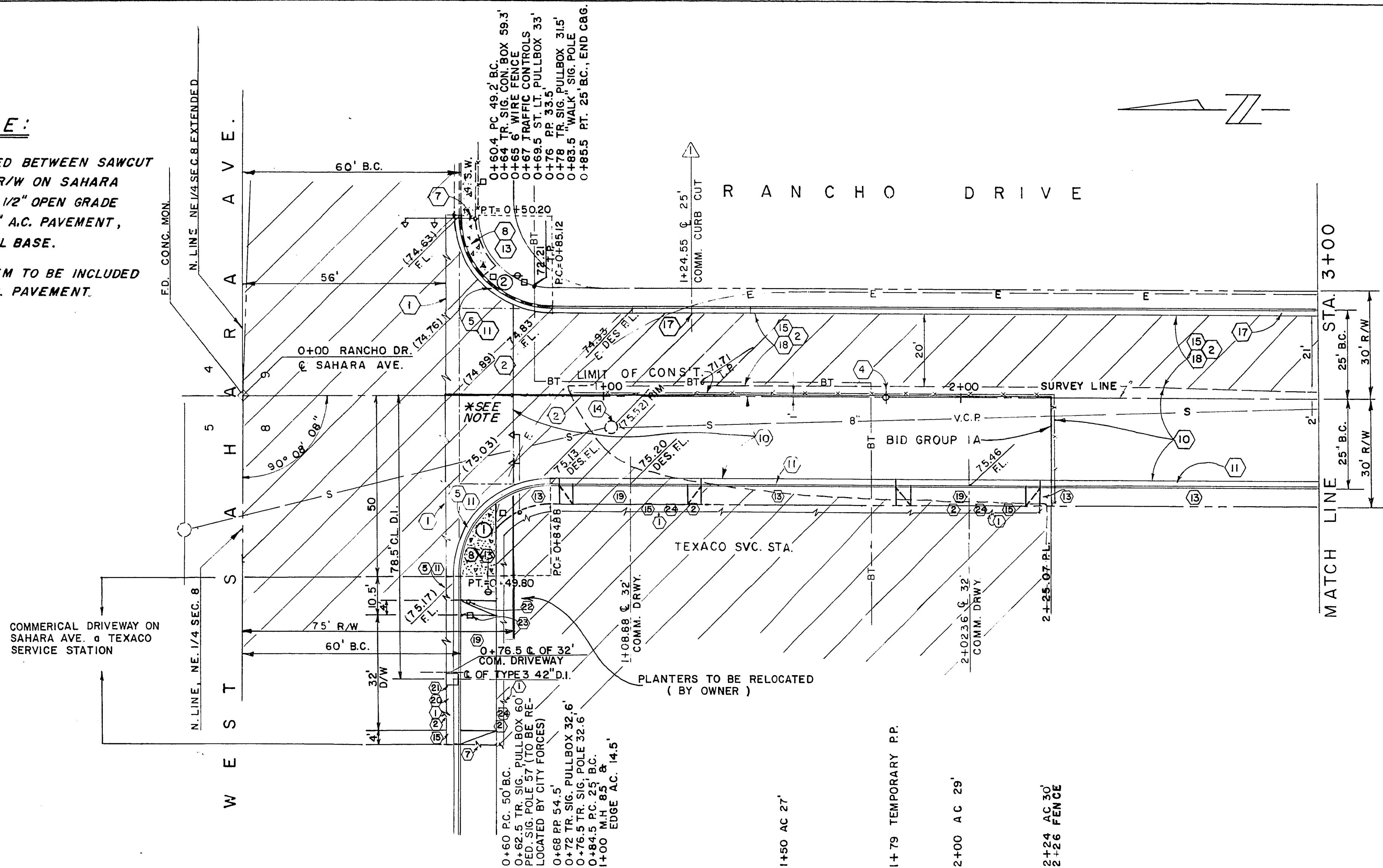
*** NOTE:**

ALL PAVEMENT REMOVED BETWEEN SAWCUT LINE AND THE STATE R/W ON SAHARA TO BE REPLACED WITH 1/2" OPEN GRADE PLANT MIX, OVER 8-1/2" A.C. PAVEMENT, OVER 3" TYPE II GRAVEL BASE.

PAYMENT FOR THIS ITEM TO BE INCLUDED IN THE COST OF 3" A.C. PAVEMENT.

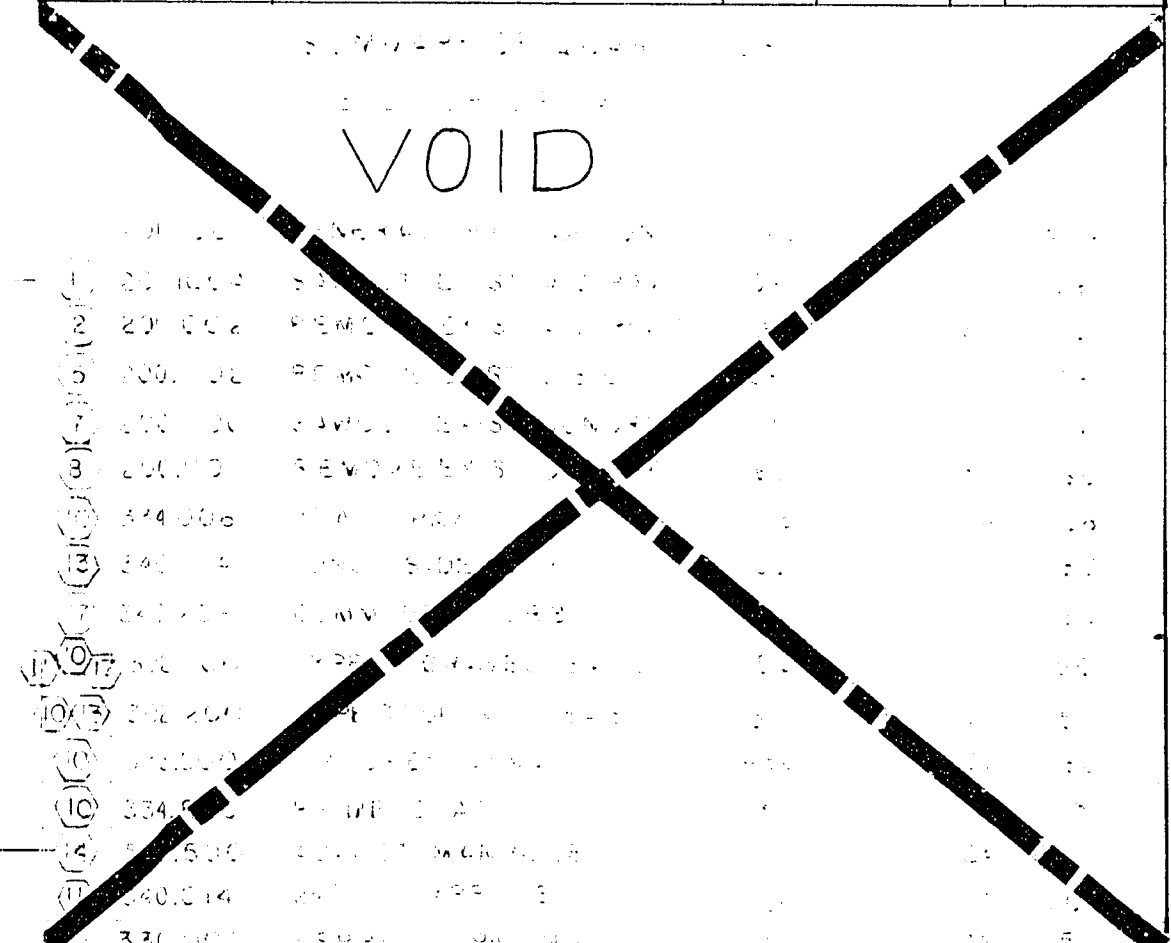
**SUMMARY OF QUANTITIES
BID GROUP 1A, AND
COMMERCIAL DRIVEWAY ON SAHARA AVE.
@ TEXACO SERVICE STATION**

CONST. NO.	ITEM NO.	DESCRIPTION	C.L.V.	S.I.D.	UNIT	TOTAL
	200.1001	GENERAL EXCAVATION	270		CY	270
①	201.1004	SAWCUT EXIST. A.C. PAV'T.	316		L.F.	316
②	201.1002	REMOVE EXIST. A.C. PAV'T.	256		SY	256
⑤	200.1102	REMOVE EXIST. C.&G.	86		L.F.	86
⑦	200.1100	SAWCUT EXIST. CONC.	12		L.F.	12
⑧	200.110	REMOVE EXIST. CONC.	625		S.F.	625
⑩	334.006	3" A.C. PAV'T.	106		TN	106
⑬	340.114	CONST. SIDEWALK	588		S.F.	588
⑮	302.901	BASE COURSE PREPARATION	58		SY	58
⑰	340.226	COMMERCIAL DRIVEWAY	1040		S.F.	1040
⑱	302.100	TYPE I GRAVEL BASE	137		CY	137
⑳	302.200	TYPE II GRAVEL BASE	72		CY	72
㉑	333.500	1/2" OPEN GRADE	472		SY	472
㉒	334.800	PRIME COAT	31		GAL	31
㉓	512.500	ADJUST MANHOLE	1		EA	1
㉔	340.014	24" "L" TYPE C&G	207		L.F.	207
㉕	330.000	PAVING ASPHALT	6		TN	6
㉖	334.117	8 1/2" A.C. PAV'T. (DOUBLE LIFT)	5		TN	5
㉗	500.200-M	MODIFY EXIST. DROP INLET	1		EA	1
㉘	BY CITY FORCES	RELOCATE EXIST. (PED. TRAF.)	1		EA	1
㉙	BY CITY FORCES	RELOCATE EXIST. (TRAFFIC)	1		EA	1
㉚	334.003	1 1/2" A.C. PAV'T. PARKING LOT	3		TN	3

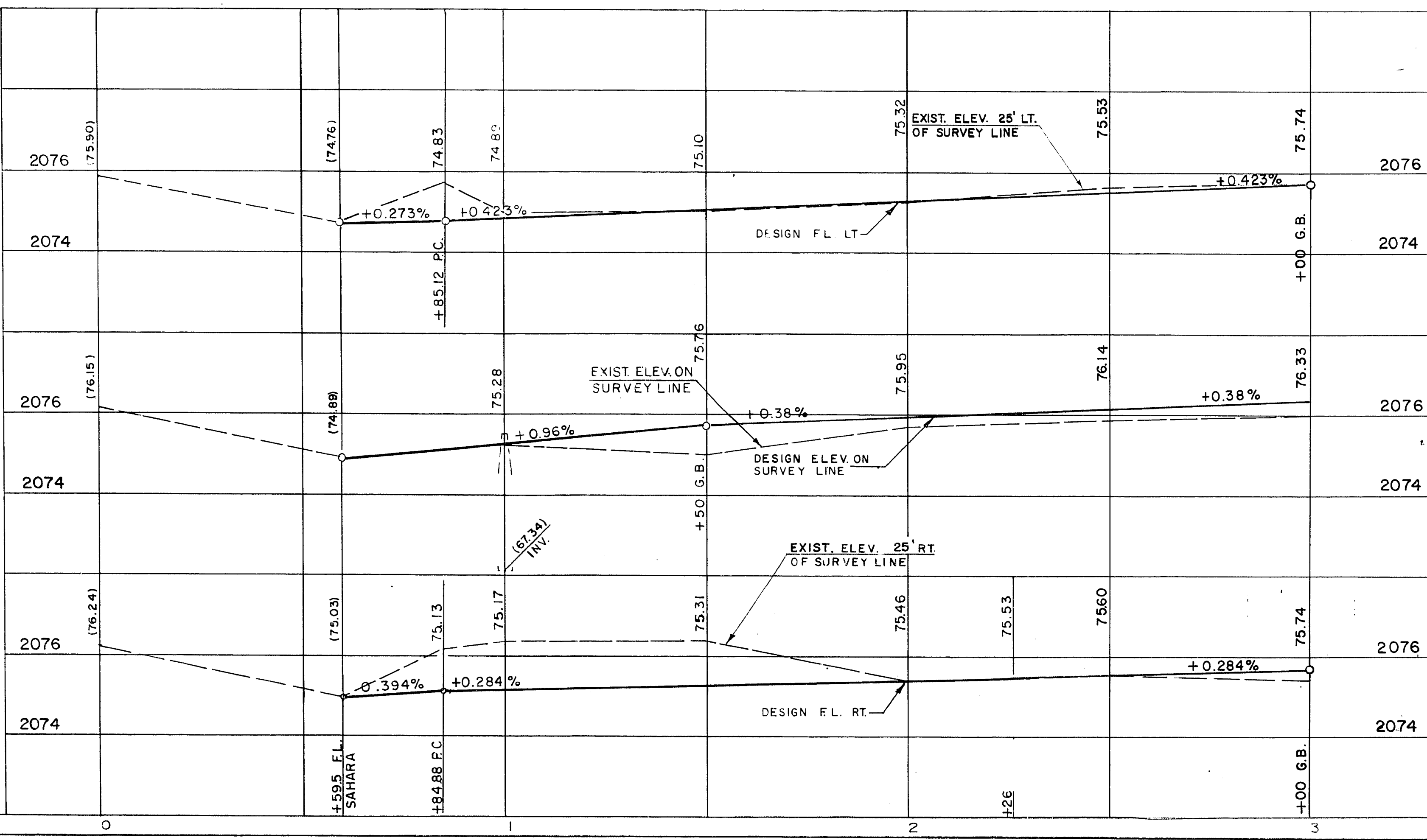
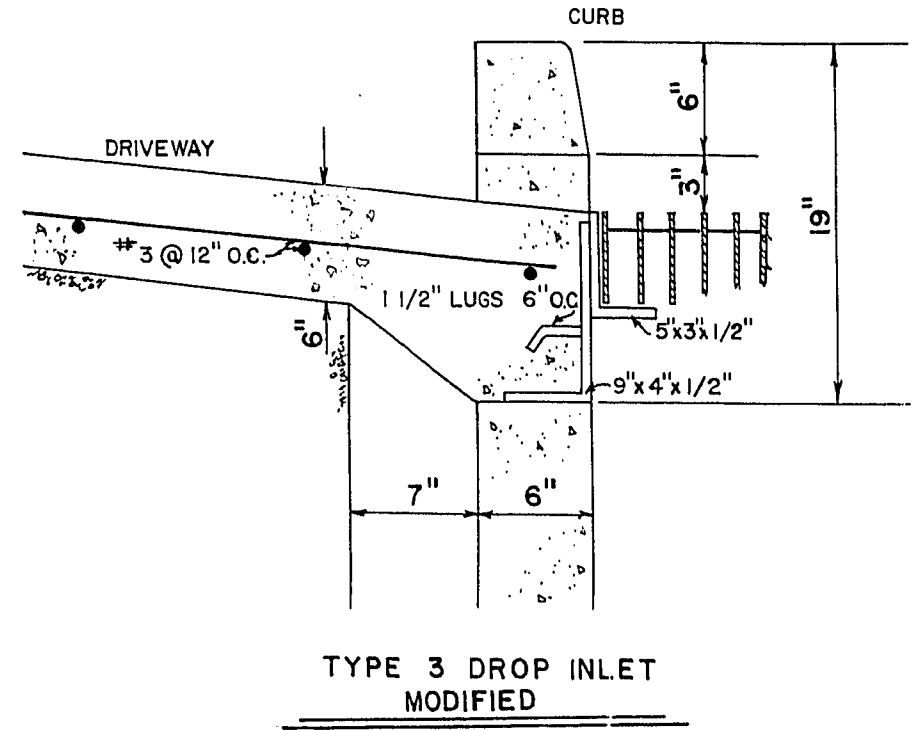


SUMMARY OF QUANTITIES

CONST. NO.	ITEM NO.	DESCRIPTION	C.L.V.	S.I.D.	UNIT	TOTAL
	201.1001	GENERAL EXCAVATION		180	CY	180
①	201.1004	SAWCUT EXIST. A.C. PAV'T.		52	LF	52
②	201.1002	REMOVE EXIST. A.C. PAV'T.		578	SY	578
④		REMOVE, RELOCATE AND ADJUST BY OWNER			EA	
⑤	200.1102	REMOVE EXIST. C & G		39	LF	39
⑦	200.1100	SAWCUT EXIST. CONCRETE	4		LF	4
⑧	200.110	REMOVE EXIST. CONCRETE	68		SF	68
⑩	334.006	3" A.C. PAV'T.		177	TN	177
⑪	340.014	24" "L" TYPE C & G		288	LF	288
⑬	340.114	CONST. SIDEWALK	157		SF	527
⑮	302.901	BASE COURSE PREPARATION		578	SY	578
⑰	340.236	COMM. DEP. CURB		40	L.F.	40
⑱	302.100	TYPE I GRAVEL BASE		81	CY	81
⑳	302.200	TYPE II GRAVEL BASE	2		CY	29
㉑	333.500	1/2" OPEN GRADE		871	SY	871
㉒	334.800	PRIME COAT		261	GAL	261



B.M. = HWY. DEPT. BRASS CAP AT S.E. COR. RANCHO DRIVE & SAHARA AVENUE ELEV. = 2075.18' (C.L.V. DATUM)



CURVE DATA

NO.	LOCATION	RADIUS	DELTA	TANGENT	LENGTH
①	WEST B.C.-SAHARA	25.00'	89°51'52"	2493'	39.21'
②	EAST B.C.-SAHARA	25.00'	90°08'08"	250.6'	3.933'

REV.	DESCRIPTION	BY	DATE	APPROVAL
	COMMERCIAL D/W @ TEXACO SER. STA. AT RANCHO DRIVE AND SAHARA AVE.		3-19-75	
	RELOCATION OF COMM. CURB CUT	R.W.W.	11-27-74	

CITY OF LAS VEGAS NEVADA
DEPARTMENT OF PUBLIC WORKS
SERVICES DIVISION

RANCHO DRIVE
SAHARA AVE. TO SIRIUS AVE.
STA. 0+00 TO STA. 3+00

W.D. NO. 4131-2 F.BK. NO. 73-5X DATE 7-2-74 DRAWING NO. S.I.D. 413
 SC (H) 1" = 2' SC (V) 1" = 20'
 DES. W.L. JAUBERT
 DR. E.N.O. - J.S.H.
 APPROVED BY DIRECTOR OF PUBLIC WORKS

FILE NO. 107-V 907
 SHEET 5A OF 27
 3-24-75
 J-0-4-10