

QUANTITY SUMMARY			
SHEET UT-1			
ITEM	DESCRIPTION	UNIT	QUANTITY
630.00.01	8" PVC SANITARY SEWER	LF	290
630.00.02	ADJUST SANITARY SEWER MANHOLE	EA	1

**CONSTRUCTION NOTES**

- ① CONSTRUCT 8" PVC SANITARY SEWER
- ② ADJUST EX. 48" SS MH RIM CONNECT TO PROPOSED 8" SS
- ③ REMOVE 8" SS PLUG AND CONNECT TO EXIST 8" SS

**GENERAL NOTES**

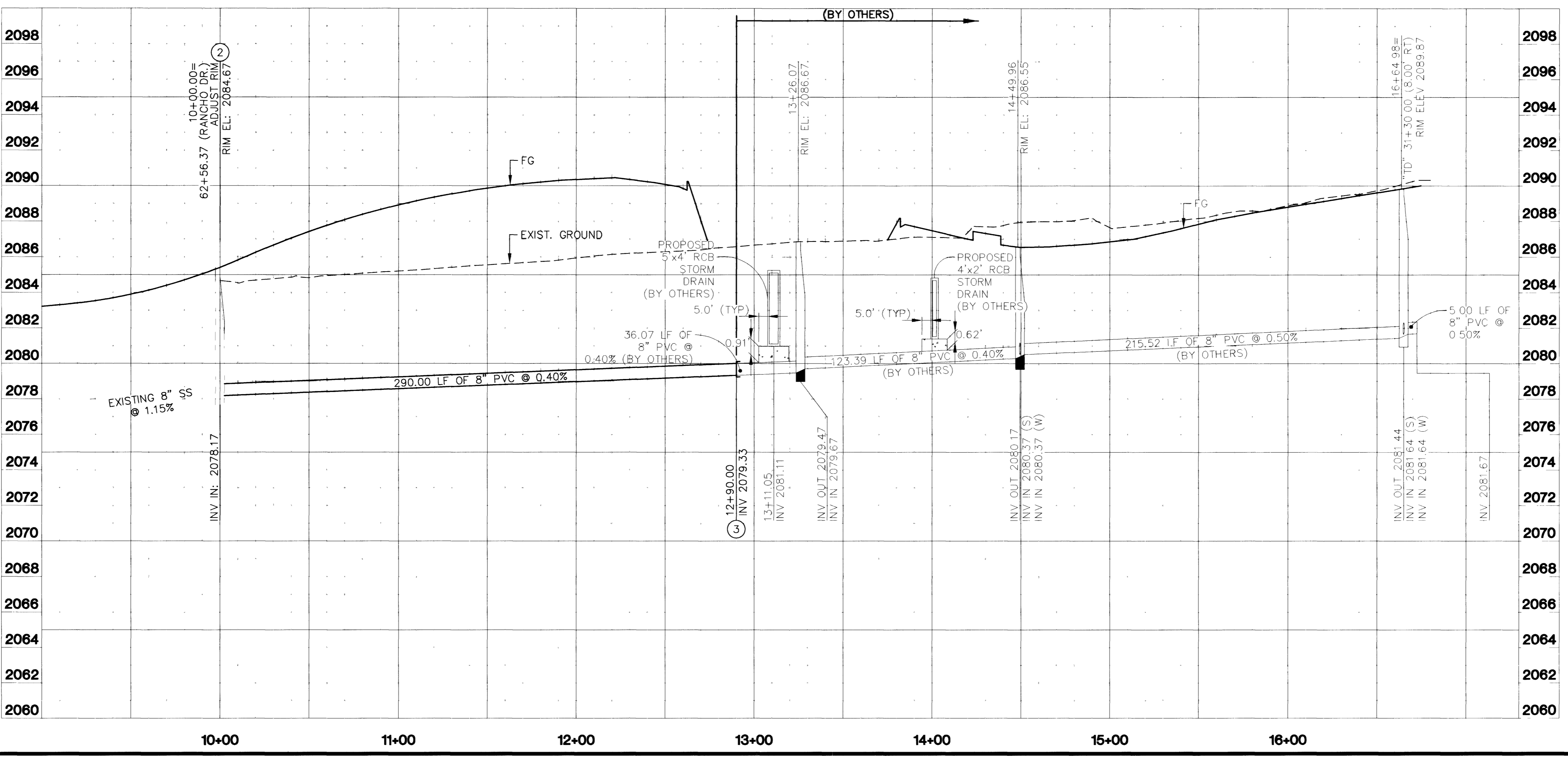
- 1. CONTRACTOR SHALL VERIFY ALL EXISTING UTILITIES LOCATIONS AND ELEVATIONS PRIOR TO ANY CONSTRUCTION
- 2. DIMENSION TO BACK OF CURB UNLESS OTHERWISE NOTED

**BASIS OF BEARING**

BEING THE NORTH LINE OF THE NORTHEAST QUARTER (NE 1/4) OF THE NORTHEAST QUARTER OF SECTION 8, TOWNSHIP 21 SOUTH, RANGE 61 EAST, M.D.M., SAID LINE ALSO BEING THE CENTERLINE OF SAHARA AVENUE. BEARING: SOUTH 89°59'39" WEST.

**BENCHMARK**

CLARK COUNTY BENCHMARK NO. 25 RIVET AND SQUARE ALUMINUM PLATE IN TOP OF CURB, NORTHEAST CORNER OF SAHARA AVENUE AND RANCHO DRIVE NEAR THE PC OF SAHARA AVENUE. ELEVATION: 2075.74 ft. (632.686 meters) REFERENCE No. 7C11 4SW5 DATUM: NAVD 88



**SAFETY ALERT**  
 Call Before You Overhead  
 1-702-593-6111

Avoid cutting underground utility lines. It's costly.

**Call before you Dig**  
 1-800-227-2600

DATE: \_\_\_\_\_

REVISIONS: \_\_\_\_\_

SCALE (H): 1"=40' SCALE (V): 1"=4' DATE: 03/01/01

DESIGN BY: C. COLSON

**Kimley-Horn and Associates, Inc.**  
 Engineering, Planning, and Environmental Consultants

PROJECT: RANCHO DRIVE PALACE STATION TO TEDDY DRIVE

SHEET: SANITARY SEWER PLAN AND PROFILE

DEPARTMENT OF PUBLIC WORKS

STATE OF NEVADA ENGINEER-STATE OF NEVADA CIVIL No. 9748

LAYNE BRANDHAGEN

DRAWING NO: UT-1

107-V3389