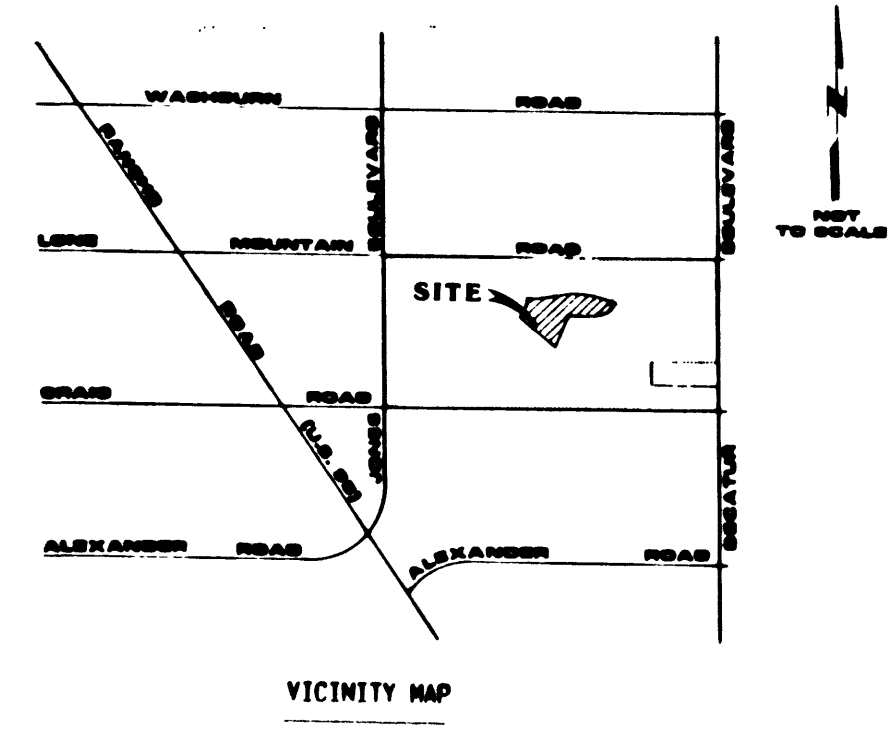
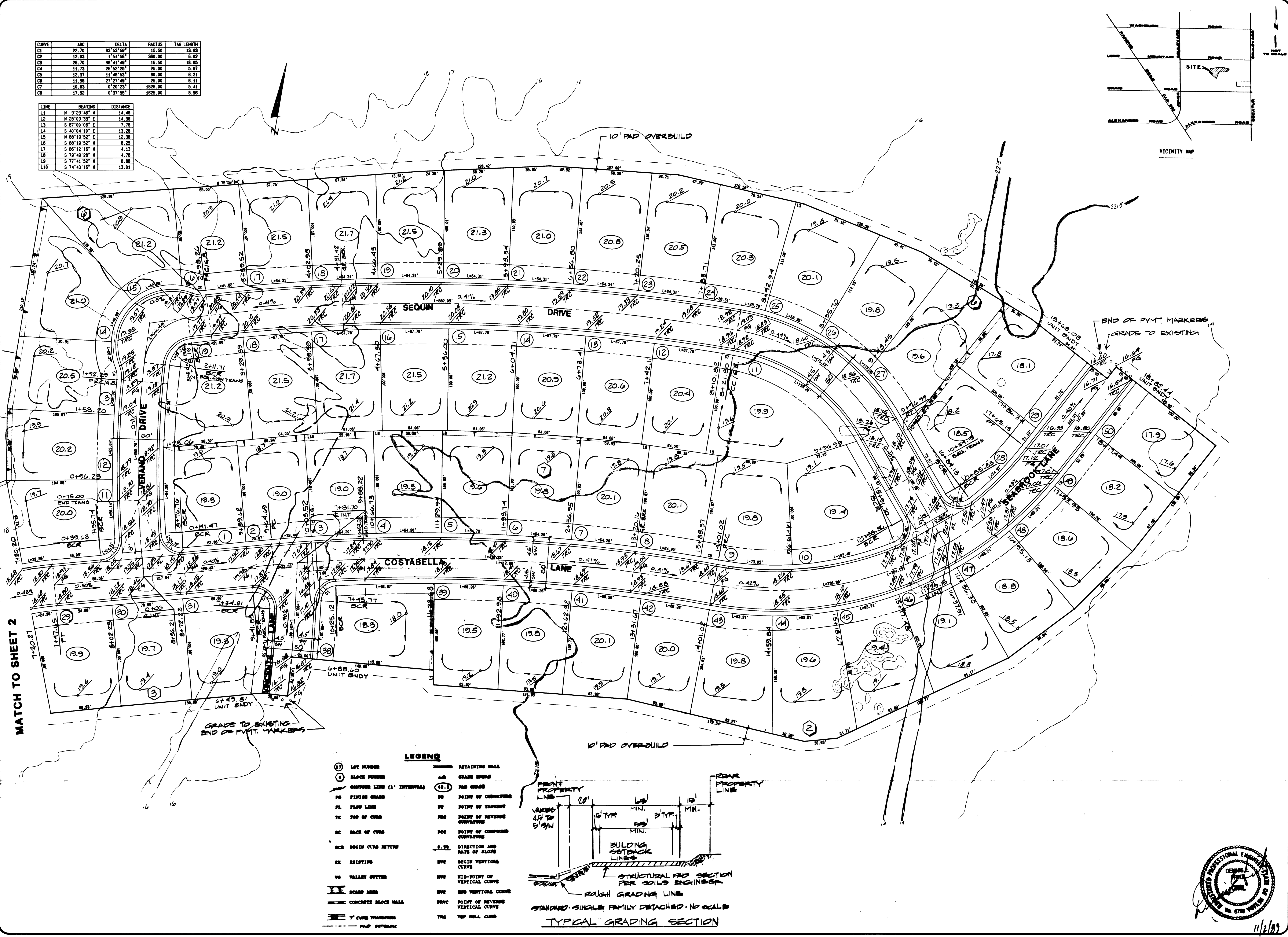


CURVE	ARC	DELTA	RADIUS	TAN LENGTH
C1	22.70	83°53'56"	15.50	13.83
C2	12.03	1°54'56"	380.00	6.02
C3	26.70	98°41'48"	15.50	18.05
C4	11.73	26°52'28"	25.00	5.97
C5	12.37	11°48'53"	60.00	6.21
C6	11.98	27°27'58"	25.00	6.11
C7	10.83	0°20'23"	1625.00	5.41
C8	17.92	0°37'55"	1625.00	8.96

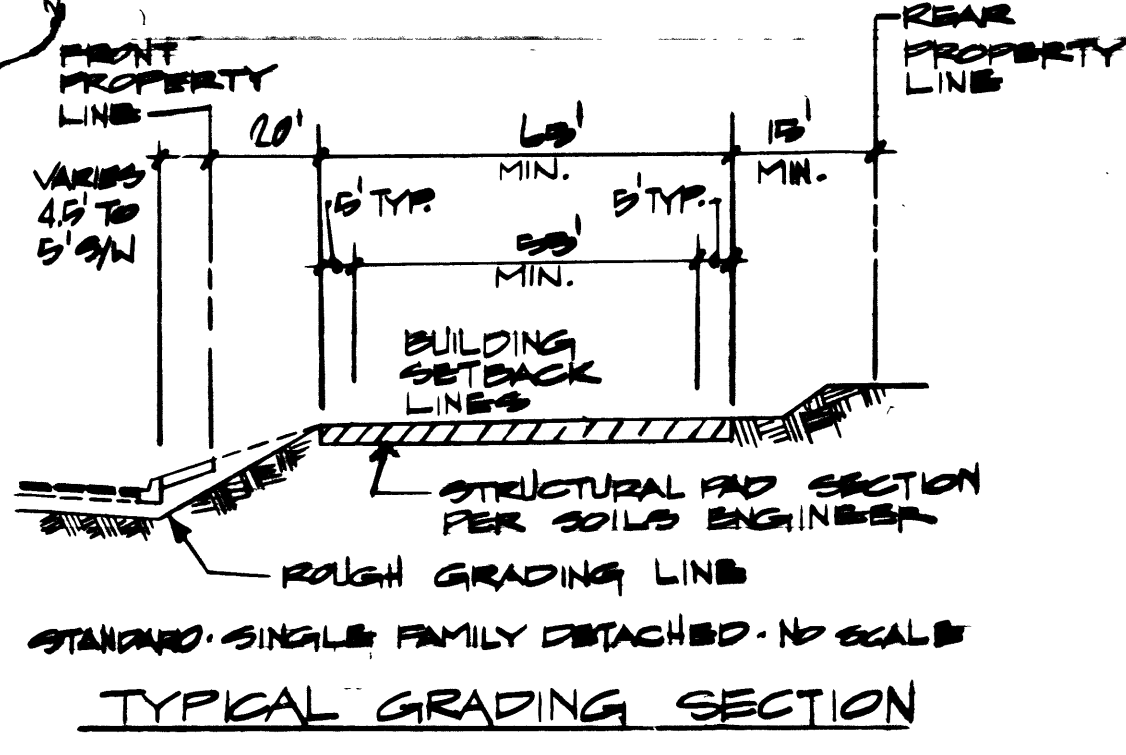
LINE	BEARING	DISTANCE
L1	N 9°29'46" E	14.48
L2	N 28°09'33" E	14.36
L3	S 87°00'06" E	7.75
L4	S 40°04'10" E	13.28
L5	N 88°19'52" E	12.38
L6	S 86°12'18" W	4.13
L7	S 79°49'28" W	4.78
L8	S 77°41'52" W	8.88
L9	S 74°43'18" W	13.01



MATCH TO SHEET 2

LEGEND

- ① LOT NUMBER
- ② BLACK NUMBER
- SPOFFER LINE (1" INTERVAL)
- FG FINISH GRADE
- PL PLAN LINE
- TC TOP OF CURB
- BC BACK OF CURB
- BCR BEGIN CURB RETURN
- EX EXISTING
- VS VALLEY CUTTER
- II SCARP AREA
- CONCRETE BLOCK WALL
- 7" CURB TRANSITION
- PAD DETAILING
- ⑬ RETAINING WALL
- GRADE BREAK
- PAD GRADE
- PC POINT OF CURVATURE
- PT POINT OF TANGENT
- PBC POINT OF BEGINNING CURVATURE
- PCC POINT OF COMPOUND CURVATURE
- 0.5% DIRECTION AND RATE OF SLOPE
- BVC BEGIN VERTICAL CURVE
- MVC MID-POINT OF VERTICAL CURVE
- END VERTICAL CURVE
- PVPC POINT OF REVERSE VERTICAL CURVE
- TRC TOP REAL CURB



REV. DATE BY REVISION
 04/16/87 JBY STREET NAMES PER FINAL MAP
 DUNMORE HOMES
 CITY OF LAS VEGAS
 vtnevada
 CONSULTING ENGINEERS - PLANNERS
 2300 PASEO DEL PRADO BUILDING A SUITE 100
 LAS VEGAS, NEVADA 89102 PHONE (702) 873-7550

ROUGH GRADING PLAN
RANCHO ALTA MIRA - LOT 10
UNIT A

TITLE
 NO. 3790-10A
 BY R.P.F.
 DATE OCT. 1987
 SCALE 1" = 40'

SHEET
3
 OF 21 SHEETS



11/2/87

6240

107V-4064-10A