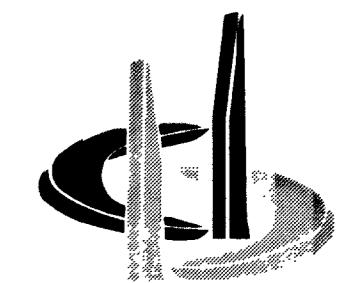


REVISIONS:

CONSULTANT:

BARKER DROTTAR ASSOCIATES, L.L.C.



Structural Engineers

4170 S. DECATUR BLVD., SUITE D-9
LAS VEGAS, NV 89103
TEL: 702.364.1861 FAX: 702.364.1857
EMAIL: bdase@bdase.biz
WEBSITE: www.bdase.biz

RANCHO AIR CENTER
48" AND 36" STORM DRAIN PLAN AND DETAIL

PLANS AND SECTIONS

JOB NAME:

SHEET NAME:

DATE: APRIL 2, 2003

DRAWN BY: JFM

CHECKED BY: EBB

JOB NUMBER: 203008

SHEET NO.:

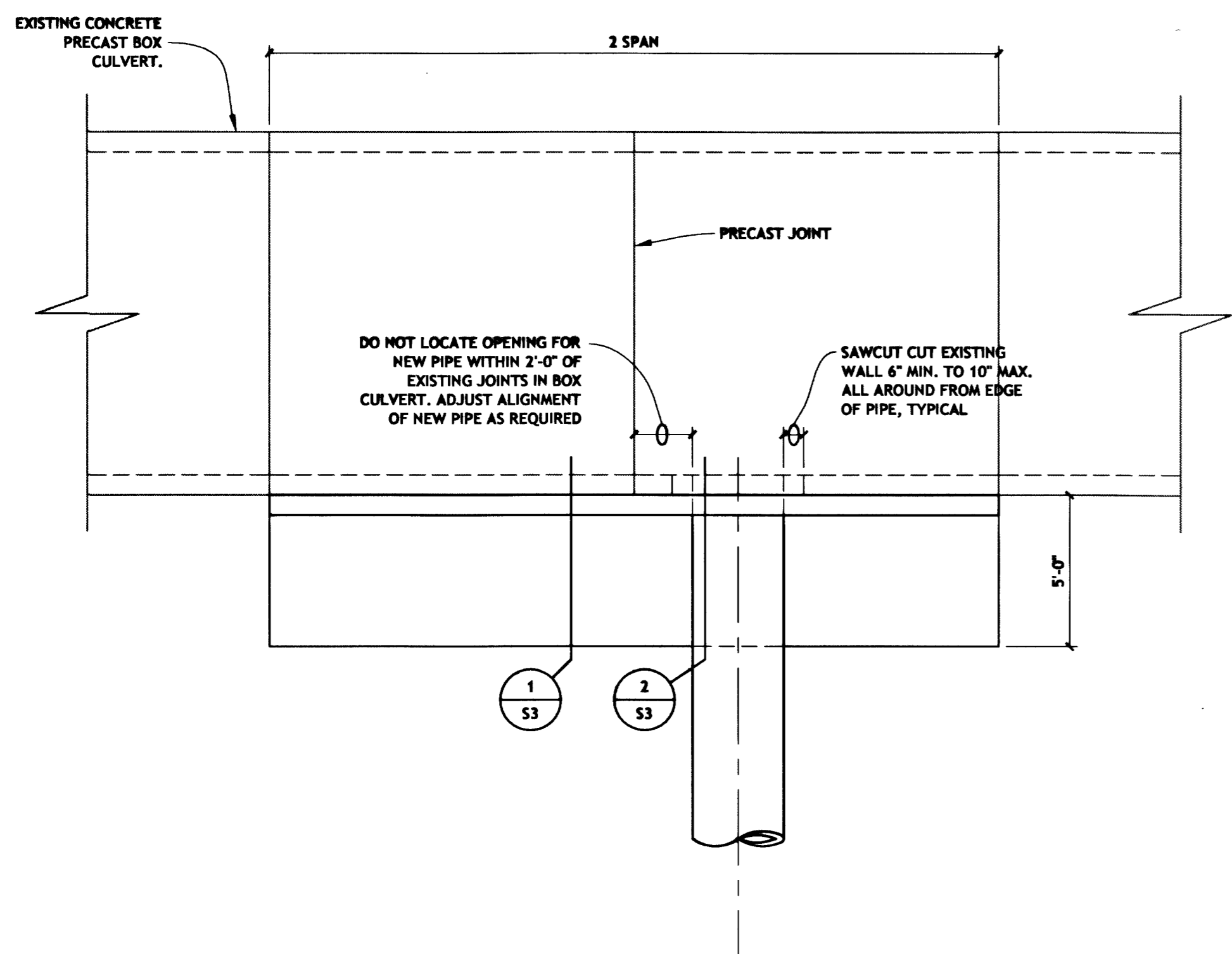
S3

23 OF TWENTY-FOUR

107V 3785

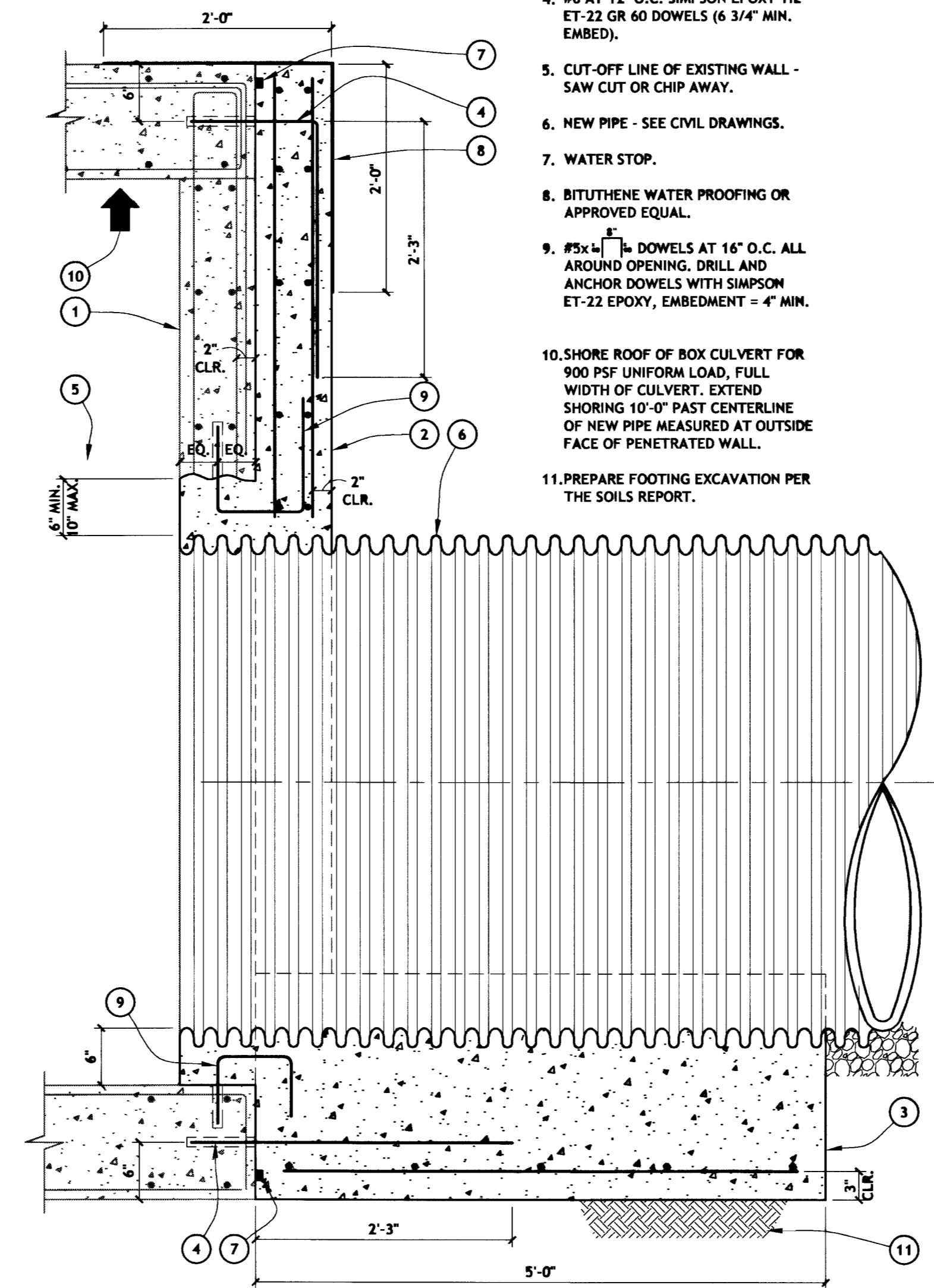
- EXISTING CONCRETE PRECAST BOX CULVERT.
- NEW 8" THICK WALL WITH #6 AT 12" O.C. EACH FACE HORIZONTAL AND VERTICAL.
- NEW PAD FOOTING WITH (5) #6 LONGITUDINAL BARS AND #6 AT 12" O.C. TRANSVERSE BARS.
- #6 AT 12" O.C. SIMPSON EPOXY TIE ET-22 GR. 60 DOWELS (6 3/4" MIN. EMBED).
- CUT-OFF LINE OF EXISTING WALL - SAW CUT OR CHIP AWAY.
- NEW PIPE - SEE CIVIL DRAWINGS.
- WATER STOP.
- BITUTHENE WATER PROOFING OR APPROVED EQUAL.
- #5x4" DOWELS AT 16" O.C. ALL AROUND OPENING, DRILL AND ANCHOR DOWELS WITH SIMPSON ET-22 EPOXY, EMBEDMENT = 4" MIN.
- SHORE ROOF OF BOX CULVERT FOR 900 PSF UNIFORM LOAD, FULL WIDTH OF CULVERT. EXTEND SHORING 10'-0" PAST CENTERLINE OF NEW PIPE MEASURED AT OUTSIDE FACE OF PENETRATED WALL.
- PREPARE FOOTING EXCAVATION PER THE SOILS REPORT.

- EXISTING CONCRETE PRECAST BOX CULVERT.
- NEW 8" THICK WALL WITH #6 AT 12" O.C. EACH FACE HORIZONTAL AND VERTICAL.
- NEW PAD FOOTING WITH (5) #6 LONGITUDINAL BARS AND #6 AT 12" O.C. TRANSVERSE BARS.
- #6 AT 12" O.C. SIMPSON EPOXY TIE ET-22 GR. 60 DOWELS (6 3/4" MIN. EMBED).
- #5 AT 12" O.C. DOWELS (MIN. LAP=2'-3").
- NEW PIPE PER PLAN.
- WATER STOP.
- BITUTHENE WATER PROOFING OR APPROVED EQUAL.
- SHORE ROOF OF BOX CULVERT FOR 900 PSF UNIFORM LOAD, FULL WIDTH OF CULVERT. EXTEND SHORING 10'-0" PAST CENTERLINE OF NEW PIPE MEASURED AT OUTSIDE FACE OF PENETRATED WALL.
- PREPARE FOOTING EXCAVATION PER THE SOILS REPORT.



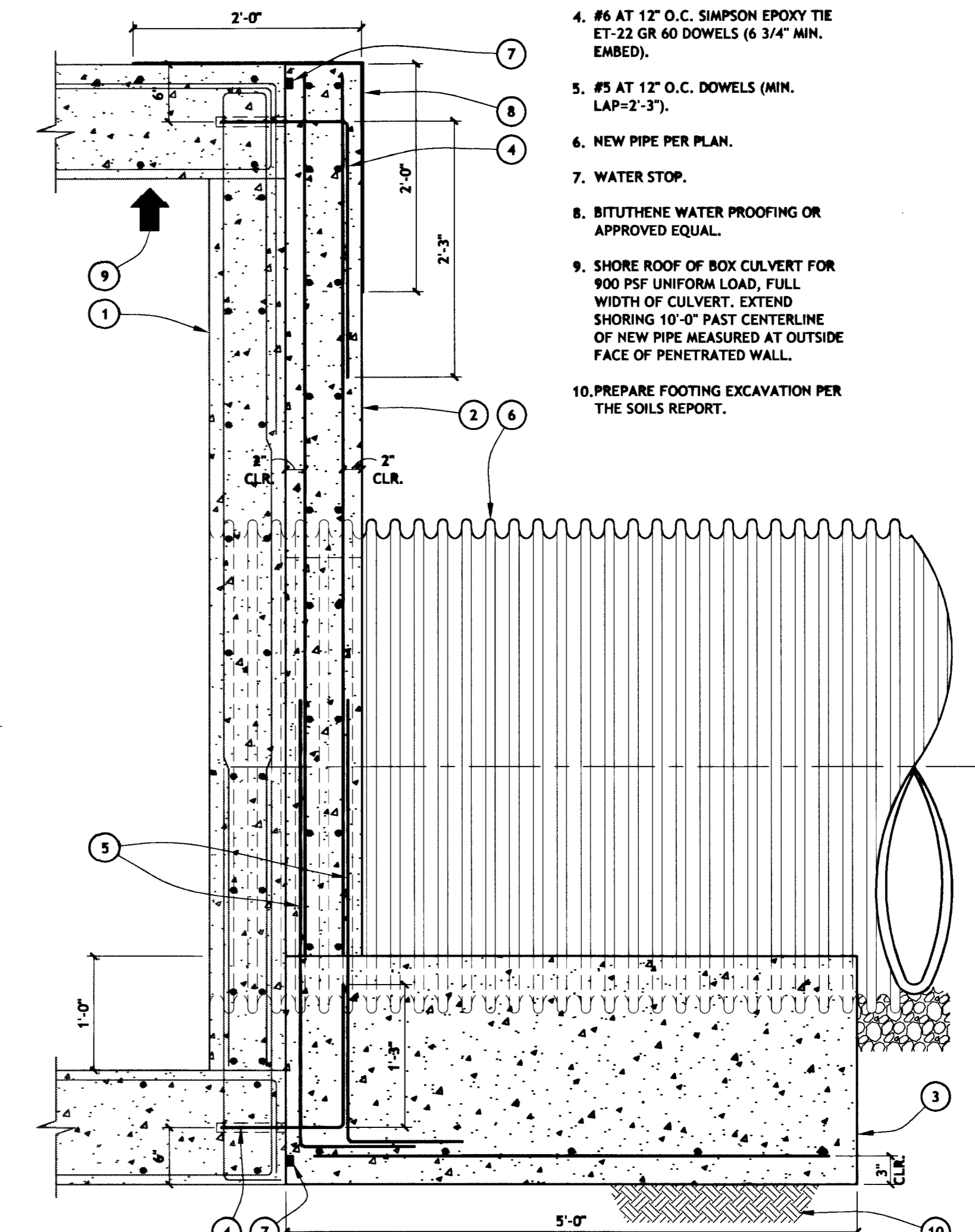
PLAN AT SINGLE PIPE INTERSECTION

SCALE: 1/4"=1'-0"



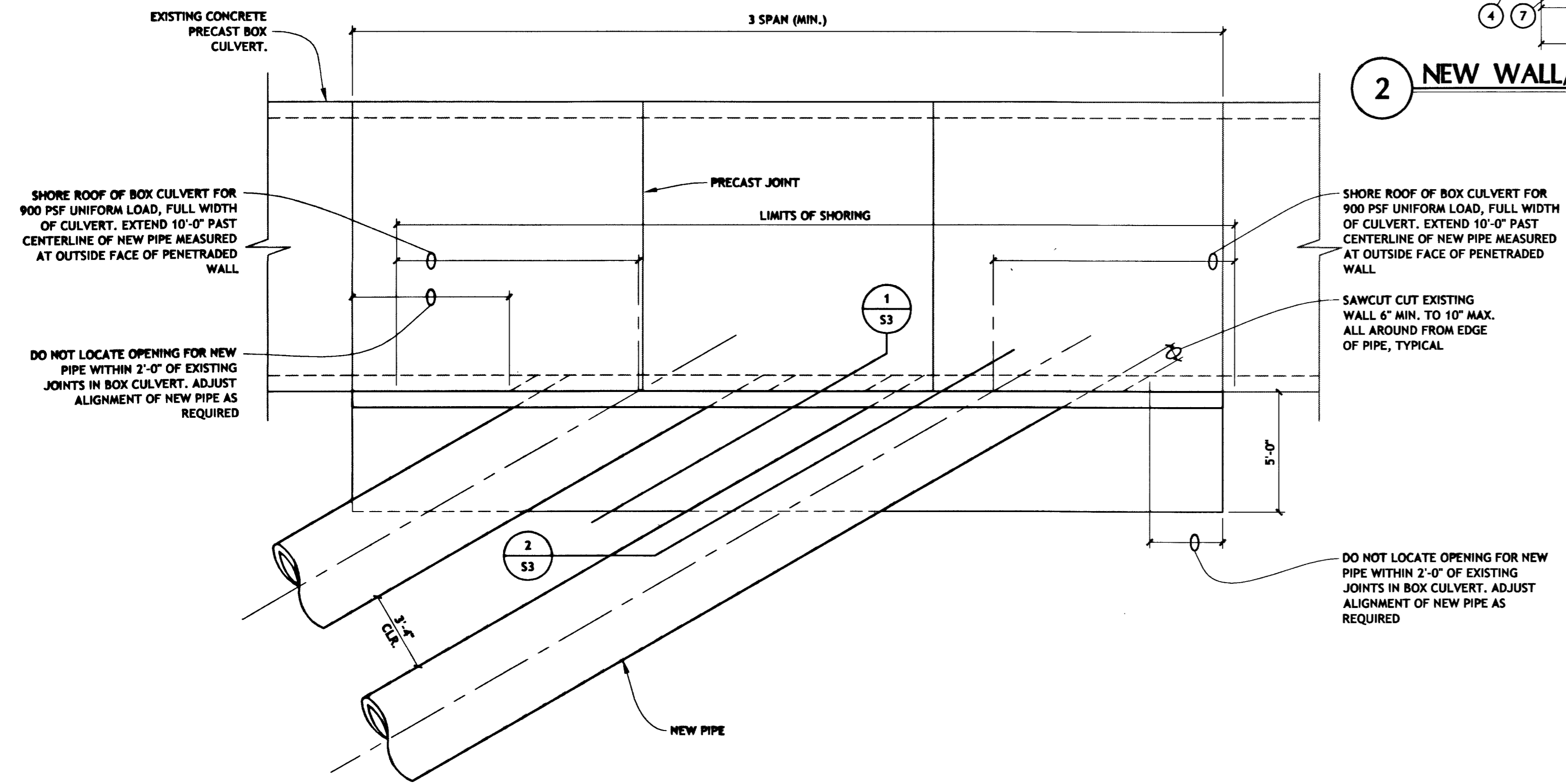
2 NEW WALL/FOOTING TO EXIST. BOX CULVERT (ALONG PIPE)

20300809



1 NEW WALL/FOOTING TO EXIST. BOX CULVERT (PAST PIPE)

20300808



PLAN AT 2 PIPE INTERSECTION

SCALE: 1/4"=1'-0"

