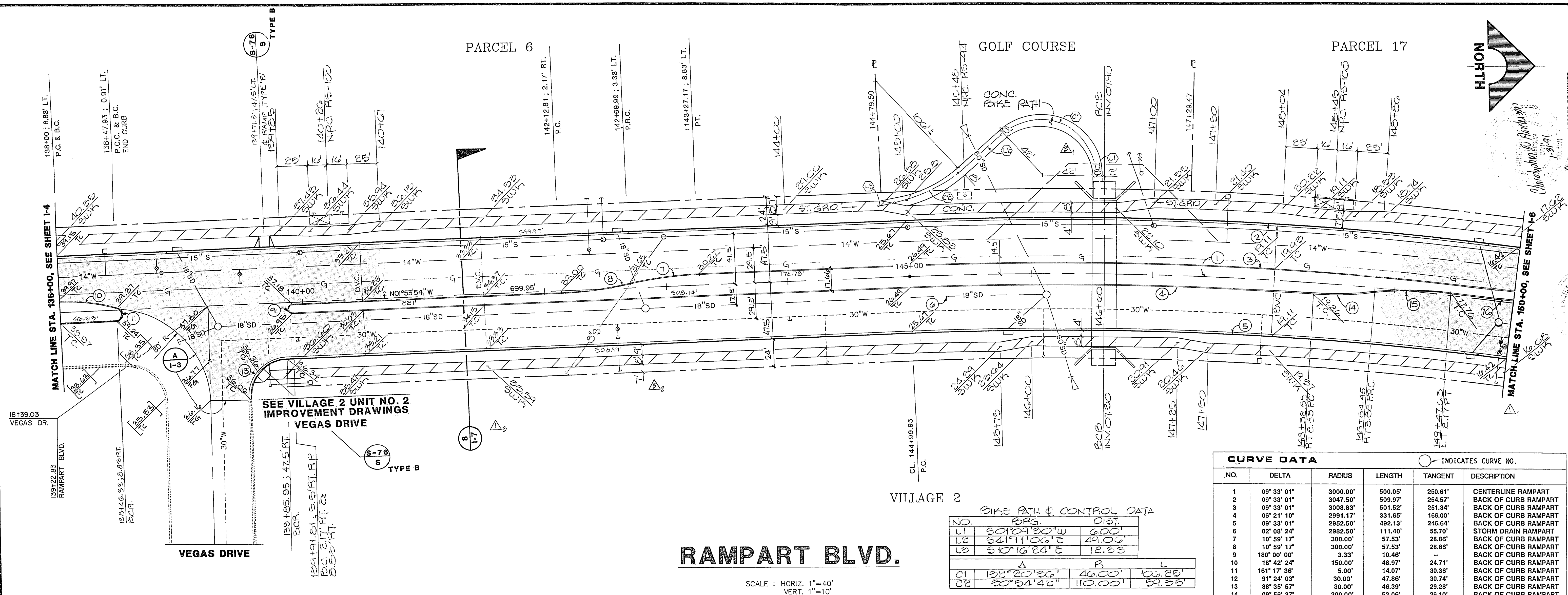


JOB NO. 620.3145



# RAMPART BLVD.

SCALE: HORIZ. 1"=40'  
VERT. 1"=10'

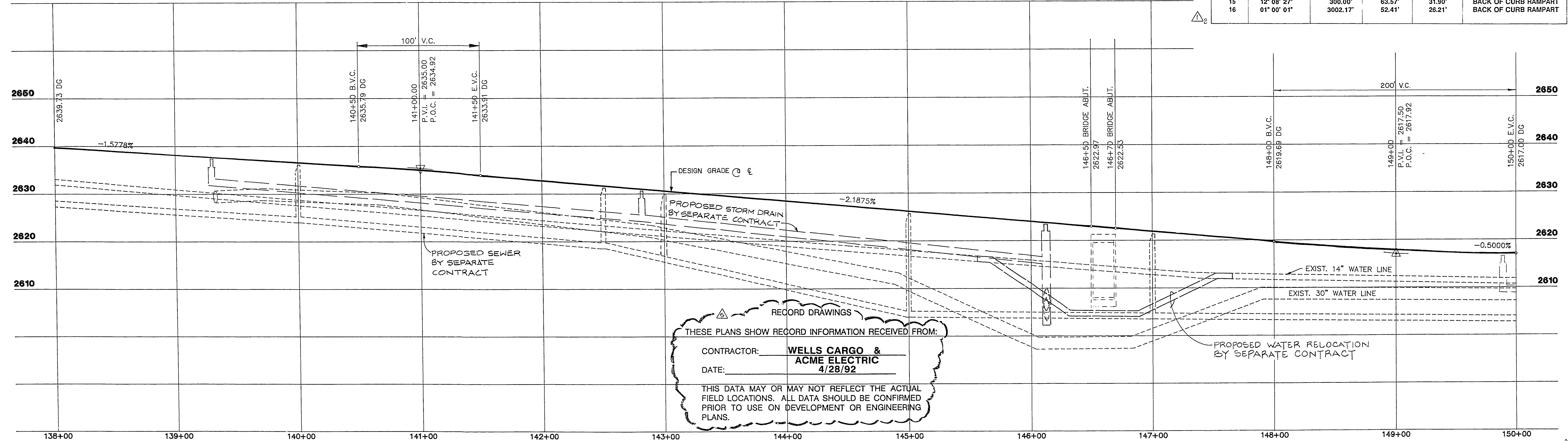
BIKE PATH & CONTROL DATA

NO.	PRG.	DIST.
L1	S01°04'20"W	6.00'
L2	S41°11'00"E	24.00'
L3	S10°16'24"E	12.33'

	A	B	L
C1	132°00'36"	46.00'	10.25'
C2	20°24'42"	110.00'	54.35'

CURVE DATA					
NO.	DELTA	RADIUS	LENGTH	TANGENT	DESCRIPTION
1	09°33'01"	3000.00'	500.05'	250.81'	CENTERLINE RAMPART
2	09°33'01"	3047.50'	509.87'	254.57'	BACK OF CURB RAMPART
3	09°33'01"	3008.83'	501.52'	251.34'	BACK OF CURB RAMPART
4	06°21'10"	2951.17'	331.65'	168.00'	BACK OF CURB RAMPART
5	09°33'01"	2952.50'	492.13'	246.64'	BACK OF CURB RAMPART
6	02°08'24"	2982.50'	111.40'	55.70'	STORM DRAIN RAMPART
7	10°59'17"	300.00'	57.53'	28.86'	BACK OF CURB RAMPART
8	10°59'17"	300.00'	57.53'	28.86'	BACK OF CURB RAMPART
9	18°08'00"	3.33'	10.46'	2.88'	BACK OF CURB RAMPART
10	18°42'24"	150.00'	48.97'	24.71'	BACK OF CURB RAMPART
11	161°17'36"	5.00'	14.07'	30.38'	BACK OF CURB RAMPART
12	91°24'03"	30.00'	47.86'	30.74'	BACK OF CURB RAMPART
13	88°35'57"	30.00'	46.39'	29.28'	BACK OF CURB RAMPART
14	09°56'37"	300.00'	52.06'	26.10'	BACK OF CURB RAMPART
15	12°08'27"	300.00'	63.57'	31.90'	BACK OF CURB RAMPART
16	01°00'01"	3002.17'	52.41'	26.21'	BACK OF CURB RAMPART



RECORD DRAWINGS  
 THESE PLANS SHOW RECORD INFORMATION RECEIVED FROM:  
 CONTRACTOR: **WELLS CARGO & ACME ELECTRIC**  
 DATE: **4/28/92**  
 THIS DATA MAY OR MAY NOT REFLECT THE ACTUAL FIELD LOCATIONS. ALL DATA SHOULD BE CONFIRMED PRIOR TO USE ON DEVELOPMENT OR ENGINEERING PLANS.

CONSTRUCTION NOTE:  
 ROUGH GRADE, STORM DRAIN, SEWER & WATER HAVE BEEN COMPLETED UNDER SEPARATE CONTRACT.

RECORD DRAWINGS  
 428292  
 6071 4492  
 1515 SOUTH HAMBURG BLVD., LAS VEGAS, NEVADA 89102  
**G.C. WALLACE, INC.**  
 Engineering/Architecture  
 HOWARD HUGHES PROPERTIES  
 SUMMERLIN - VILLAGE I SOUTH  
 RAMPART BLVD.  
 IMPROVEMENT PLANS  
 STA. 138+00 TO STA. 150+00  
 SHEET  
**1-5**  
 SHT 7 OF 16