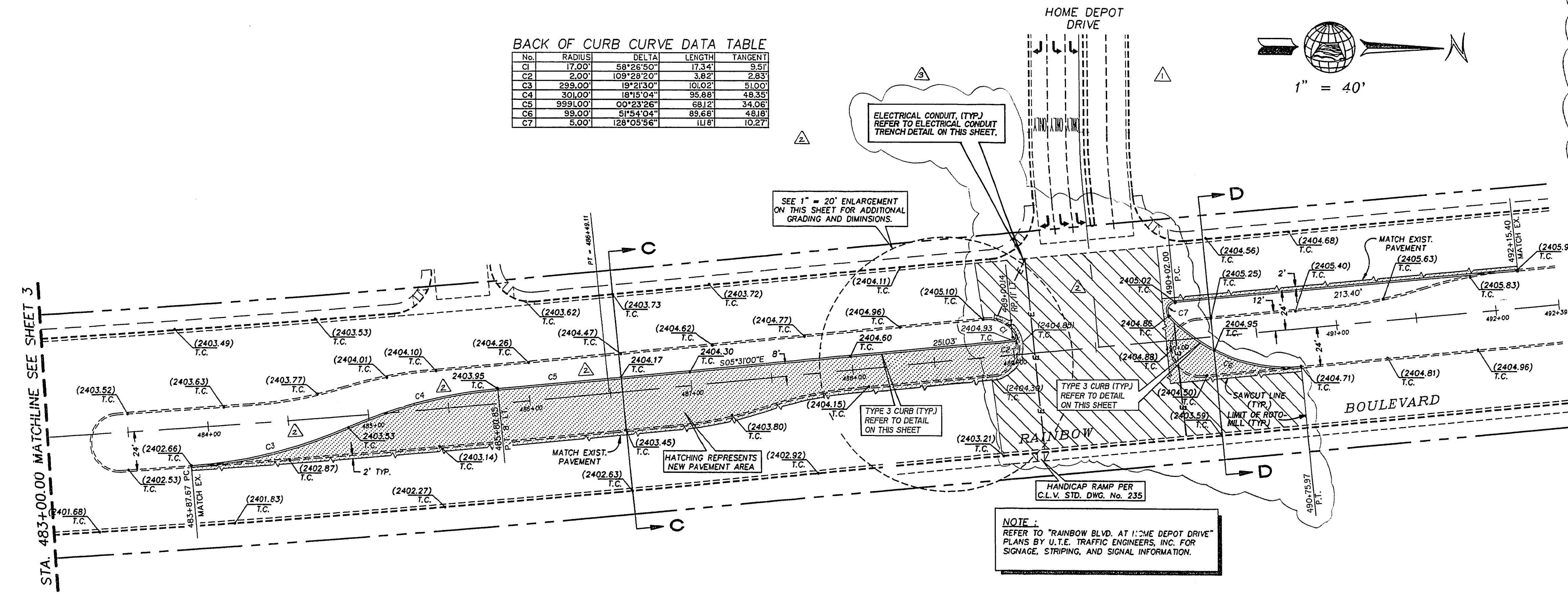
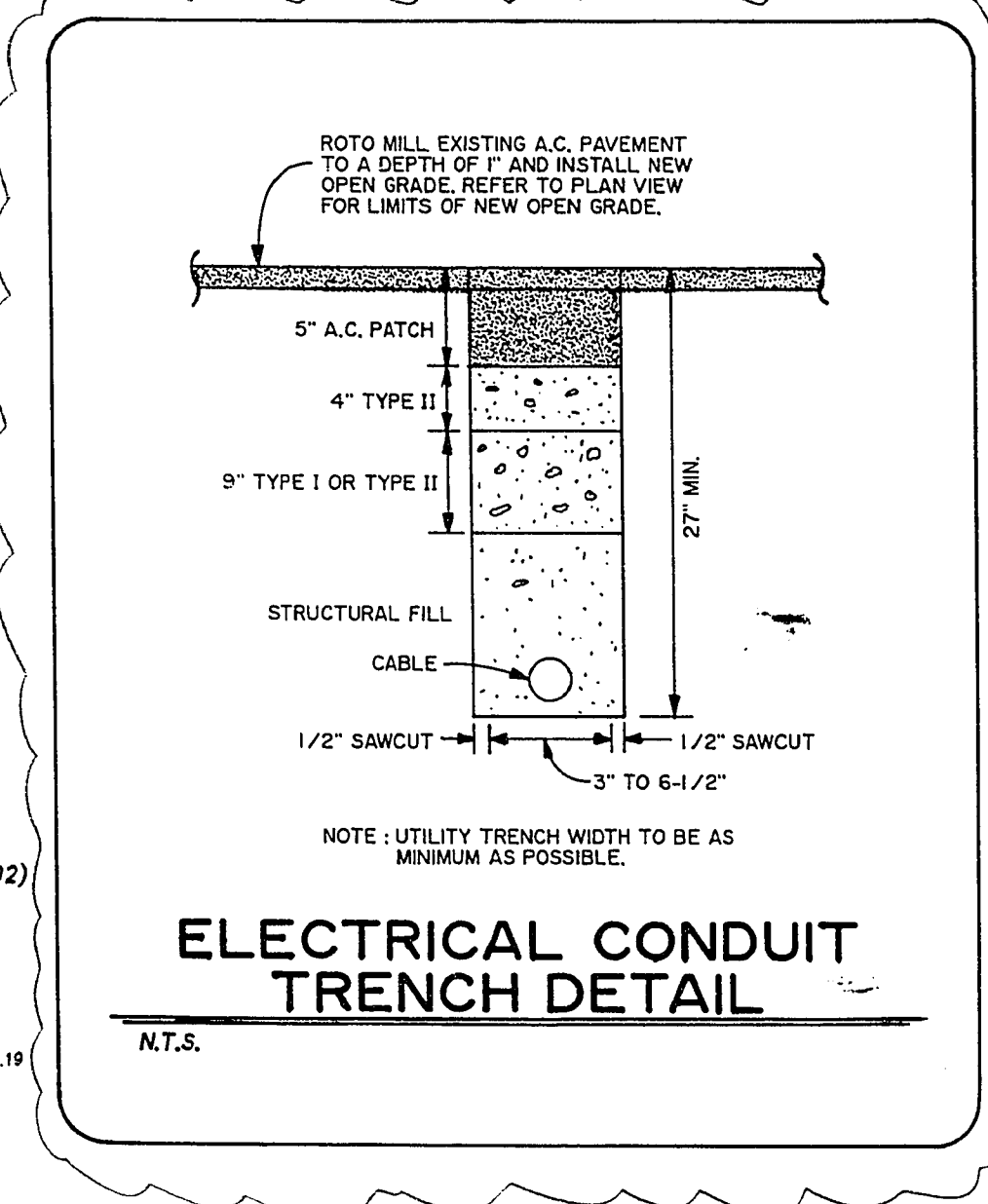
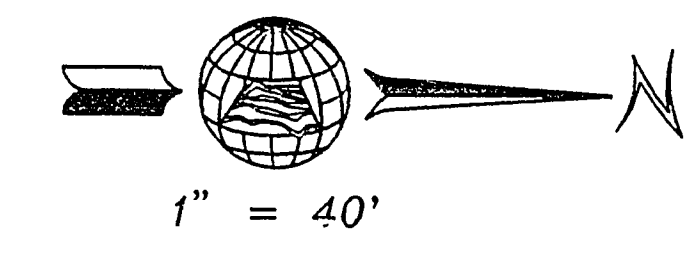


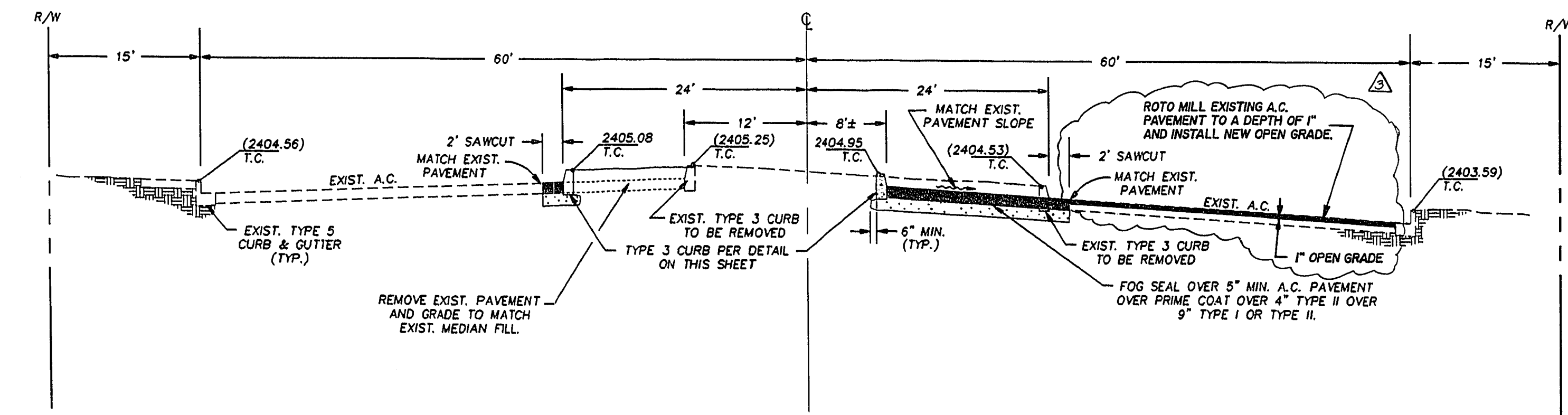
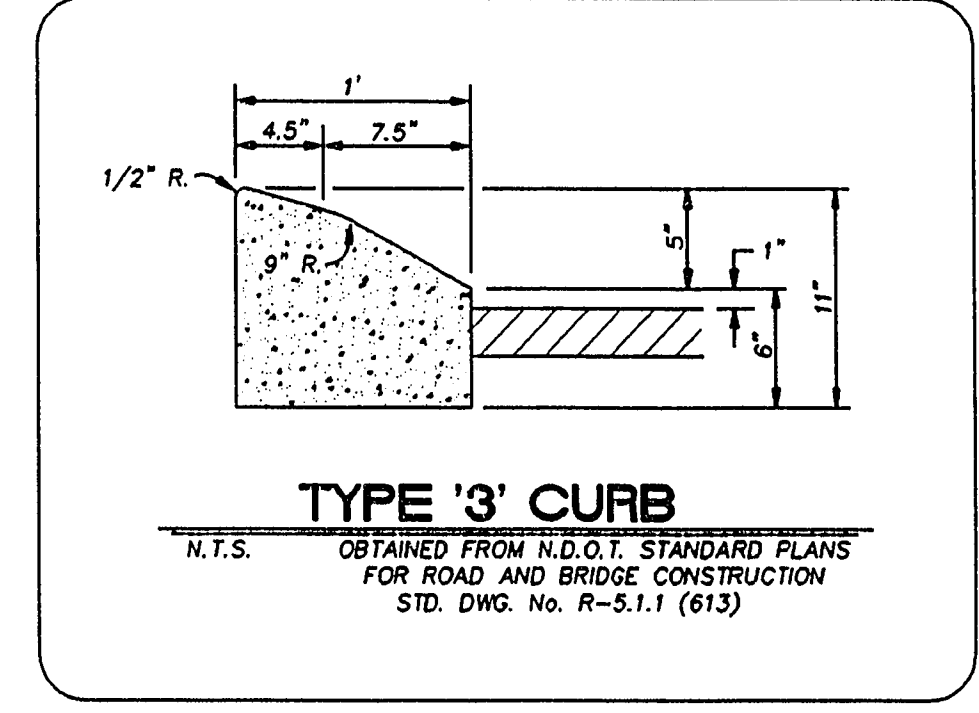
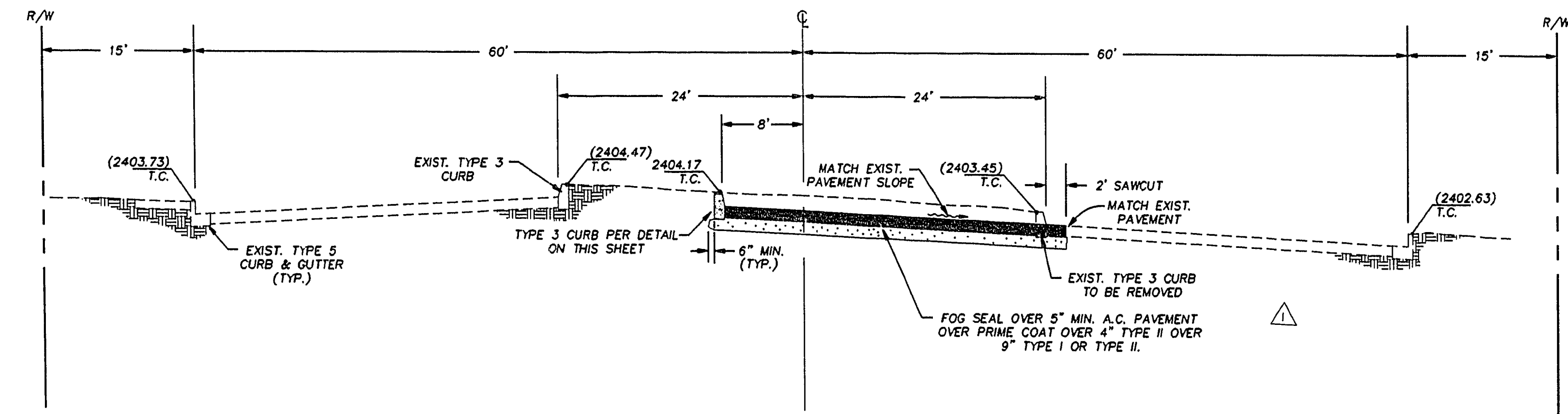
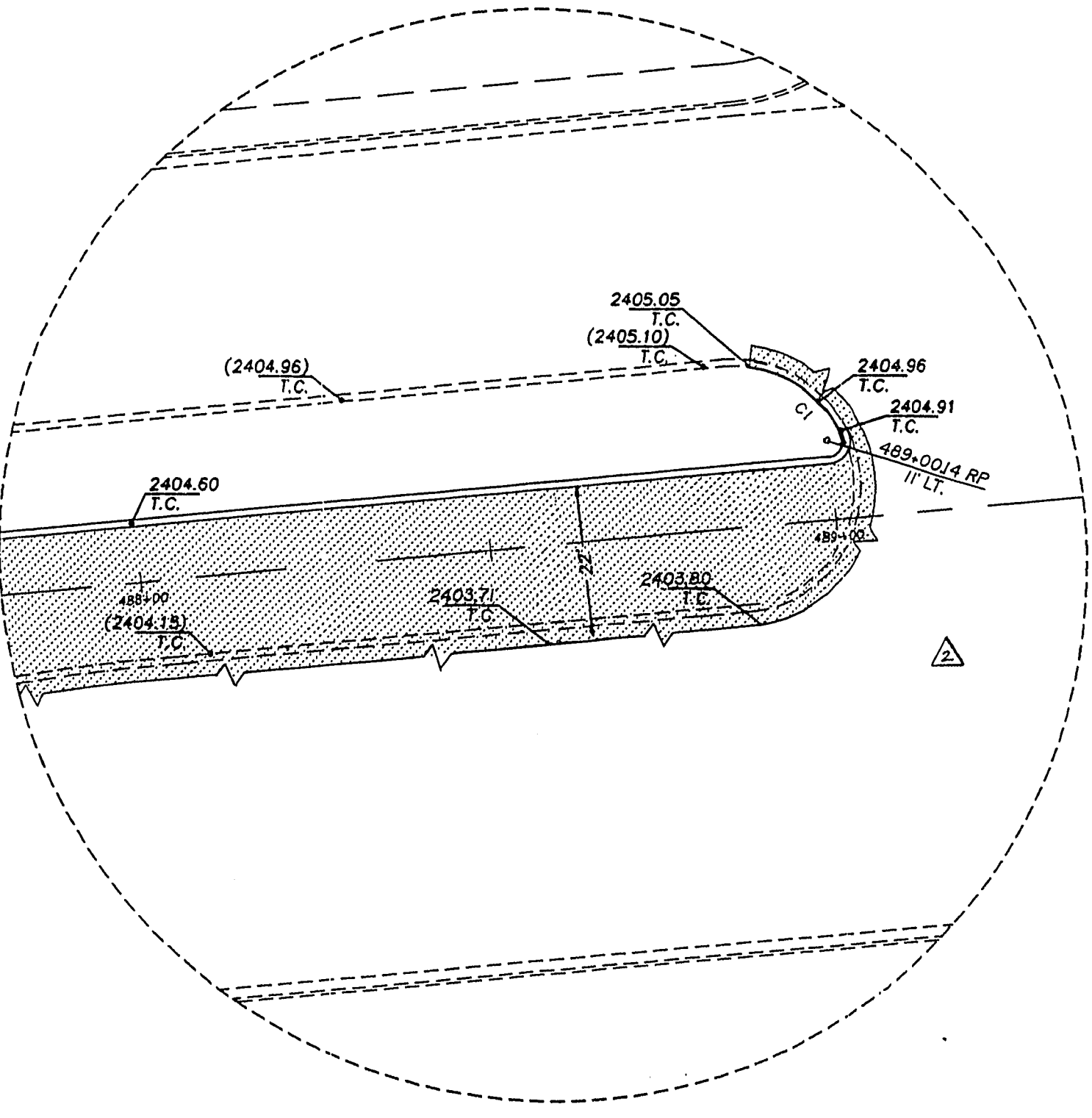
Call before you Dig  
1-800-227-2600

**BACK OF CURB CURVE DATA TABLE**

No.	RADIUS	DELTA	LENGTH	TANGENT
C1	17.00'	58°26'50"	17.34'	8.57'
C2	2.00'	108°23'20"	3.82'	2.83'
C3	289.00'	19°21'30"	10.02'	51.00'
C4	30.00'	18°15'04"	95.88'	48.35'
C5	989.00'	00°23'26"	68.12'	34.06'
C6	99.00'	51°54'04"	88.68'	43.18'
C7	5.00'	128°05'58"	11.8'	10.27'



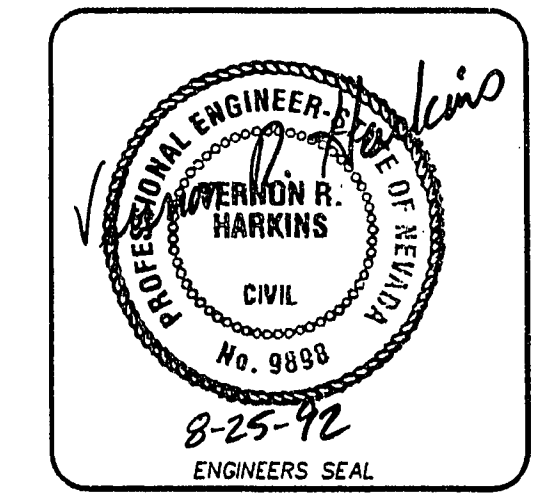
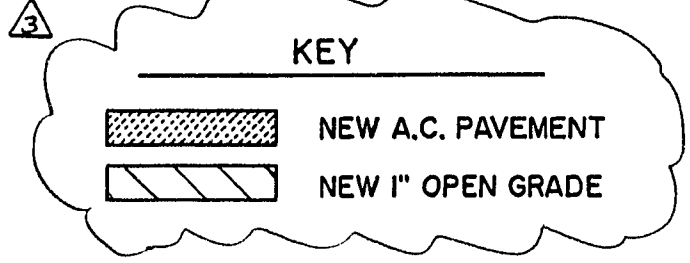
**NOTE:**  
REFER TO "RAINBOW BLVD. AT HOME DEPOT DRIVE" PLANS BY U.T.E. TRAFFIC ENGINEERS, INC. FOR SIGNAGE, STRIPING, AND SIGNAL INFORMATION.



**ESTIMATED QUANTITIES (THIS SHEET ONLY)**

5" A.C. PAVEMENT	1,586 S.Y.
TYPE '3' CURB	1,005 L.F.
TYPE I AGGREGATE BASE	397 C.Y.
TYPE II AGGREGATE BASE	203 C.Y.
REMOVE EXIST. CURB	753 L.F.
REMOVE EXIST. PAVEMENT	4,380 S.F.
SAWCUT	950 L.F.

FOR GENERAL REFERENCE ONLY



Date	Appr.	Date	Revis.	No.	Revisions
8-28-92		8/21/92	M.D.P.	1	NEW SHEET REVISED PER CIV. TRAFFIC COMMENTS. MEDIAN CHANGED TO MATCH EXISTING MEDIAN. ROADWAY RECONSTRUCTION TO BE PERFORMED IN 1993. SEE UTILITY TRENCH DETAIL, C.E.T. AND UTILITIES OF OVER AREA GRADE.
12/27/92		11/24/92	AGP	2	
9-25-92		1/24/93	REP	3	

**Church Engineering of Nevada, Inc.**  
6800 R. Christensen Blvd.  
Las Vegas, NV 89102  
(702) 878-6244

**RAINBOW PLAZA II**  
A COMMERCIAL PROPERTY  
CITY OF LAS VEGAS, CLARK COUNTY, NEVADA

**RAINBOW BOULEVARD**  
MEDIAN ALTERATIONS

Scale: 1" = 40'  
File No. 336MED  
Drawn by: MDP  
Checked by: MDP  
Date: 08-03-92  
Job Number: 7147.336  
Sheet Number: 4 OF 4