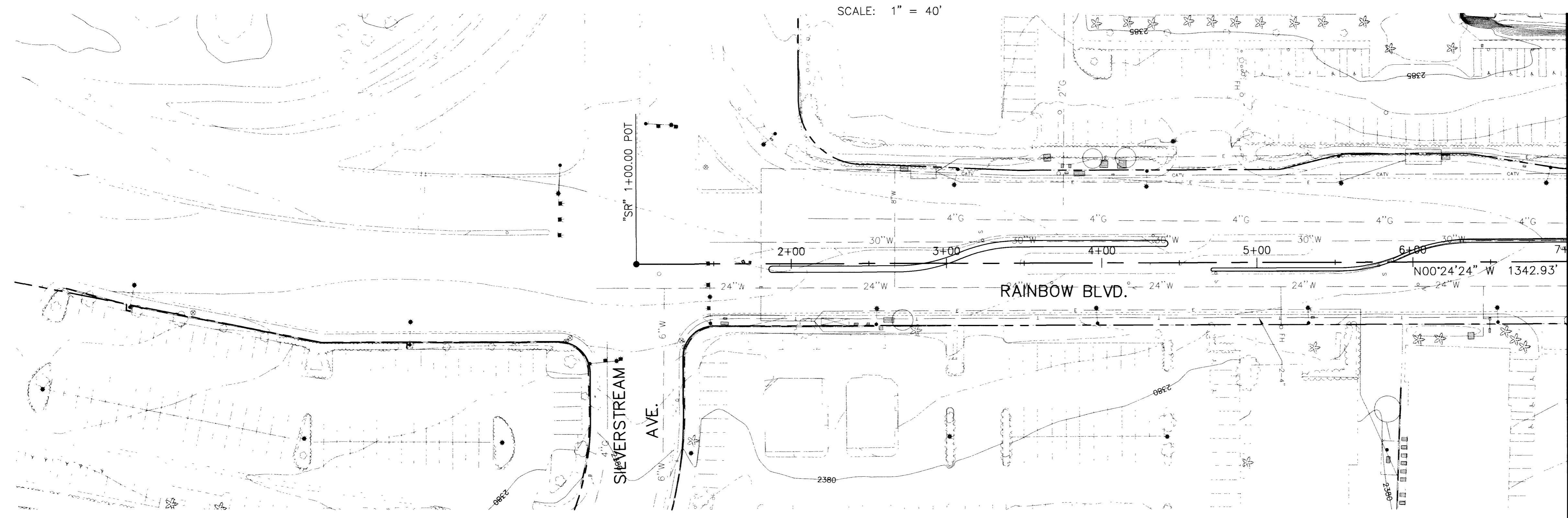
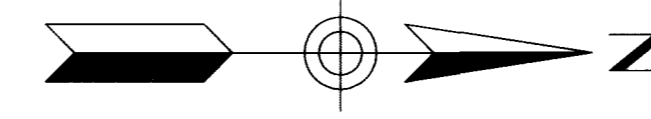


NAME: P:\w7x70800\700\702\CIVIL\702Dwg\70800-sd01.dwg DATE: OCT 10, 2002 TIME: 9:15 AM

40' 20' 0 40' 80'
SCALE: 1" = 40'



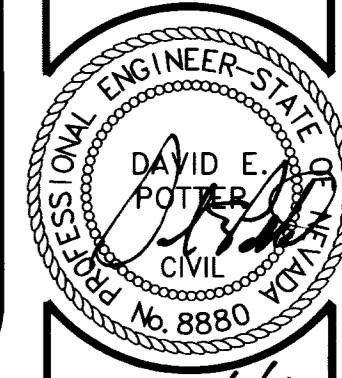
MATCH LINE "SR" 7+00 SEE SHEET SD-2

NOTES:

BASIS OF BEARINGS
NORTH 00°05'50" WEST, BEING THE BEARING OF THE WEST LINE OF THE SOUTHWEST QUARTER (SW 1/4) OF THE SOUTHWEST QUARTER (SW 1/4) OF SECTION 23, T. 20 S., R. 60 E, M.D.M., CLARK COUNTY, NEVADA, AS SHOWN ON FILE 80 OF PARCEL MAPS, AT PAGE 46.

BENCHMARK
CITY OF LAS VEGAS BENCHMARK: 1LV00 26W4 RIVET AND PLATE IN TOP OF CURB, NORTHEAST RETURN OF RAINBOW BLVD AND WASHINGTON AVE
ELEV. = 724.7549 METERS (PUBLISHED NAVD'88)
ELEV. = 2377.80 U.S. SURVEY FEET (CALCULATED NAVD'88)

CITY OF LAS VEGAS BENCHMARK: 0LV00 14SW5 RIVET AND PLATE IN TOP OF CURB, NORTHEAST RETURN OF SMOKE RANCH RD AND LORENZI BLVD
ELEV. = 708.7363 METERS (PUBLISHED NAVD'88)
ELEV. = 2325.25 U.S. SURVEY FEET (CALCULATED NAVD'88)

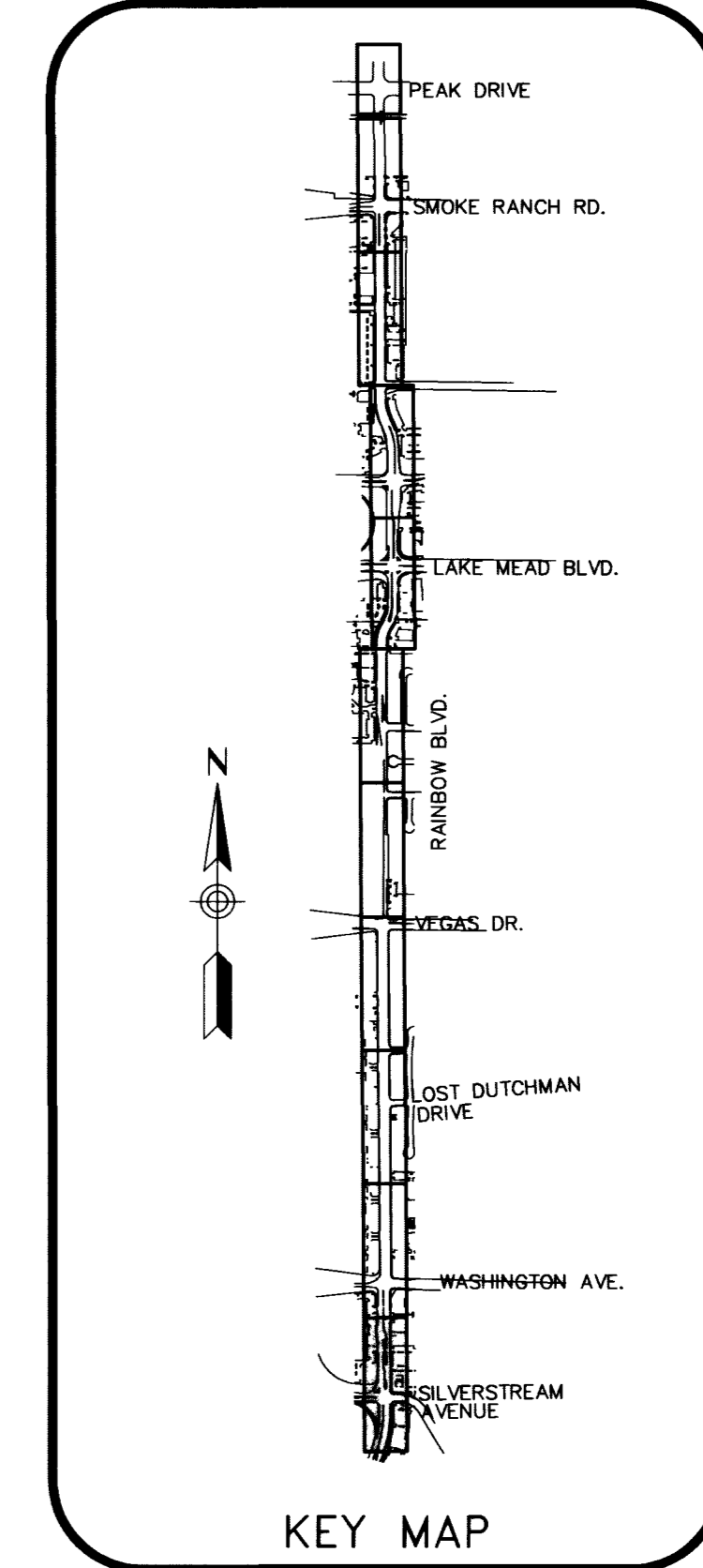
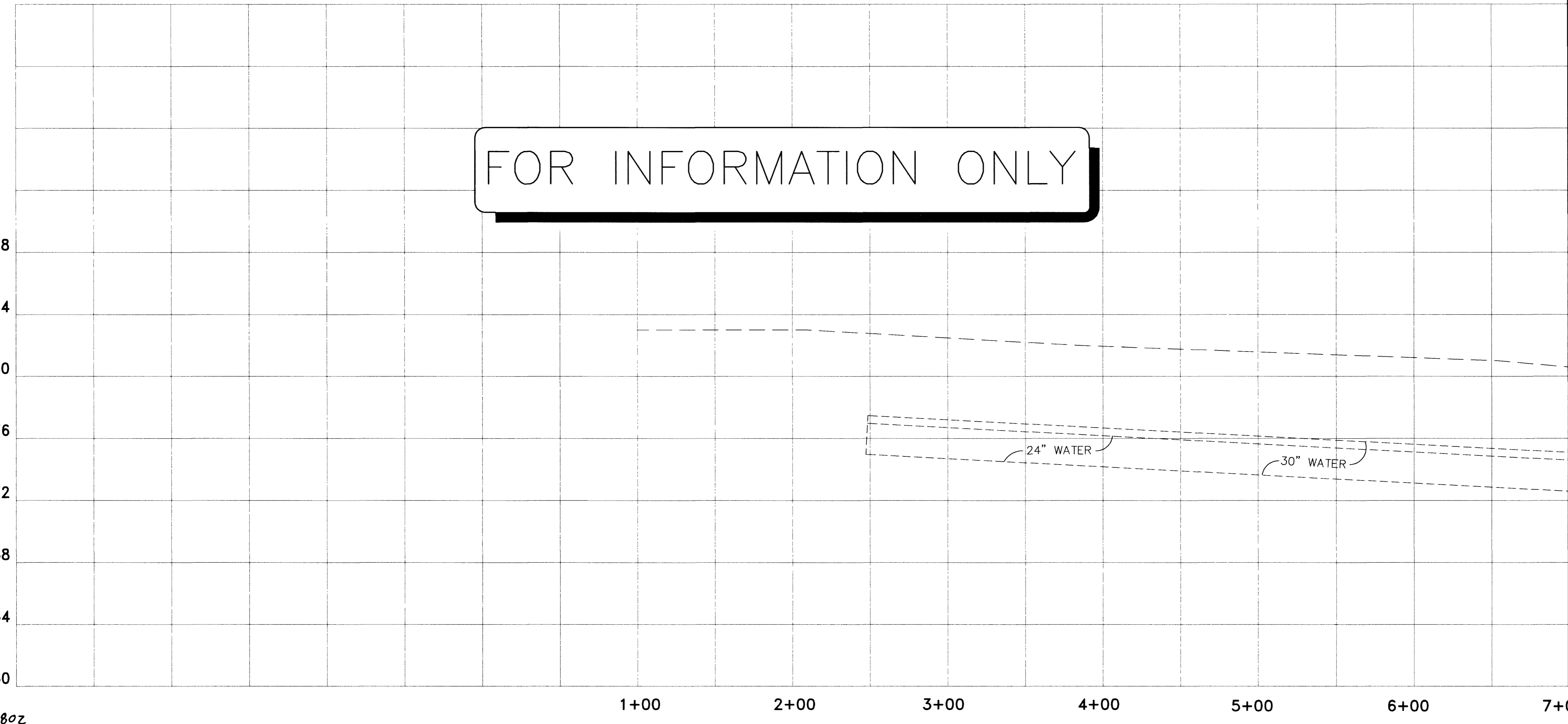


STAMP DATE: 10/10/02

4500 W. SHARPA AVE., SUITE 150
LAS VEGAS, NV 89102
PHONE: (702) 870-2730
FAX: (702) 870-1731

Sverdrup
CIVIL, INC.

FOR INFORMATION ONLY



Las Vegas Valley Water District Date

Call before you Dig.
1-800-227-2600
UNDERGROUND SERVICE (USA)
AND
CLARK COUNTY TRAFFIC MANAGEMENT OPERATIONS UNIT (702) 455-7544

AVOID HITTING OVERHEAD POWER LINES: IT'S COSTLY!
CALL BEFORE YOU DO OVERHEAD

1-702-593-6111

RAINBOW BOULEVARD
SIEVERSTREAM AVE. TO SMOKE RANCH ROAD
STORM DRAIN PLAN & PROFILE
"SR" 1+00 TO "SR" 7+00

SHEET
SD-1
65 OF 110 SHEETS
DRAWING NO.
107-V3519

46802

Replot