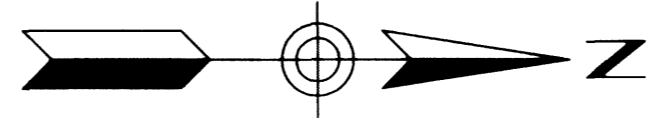


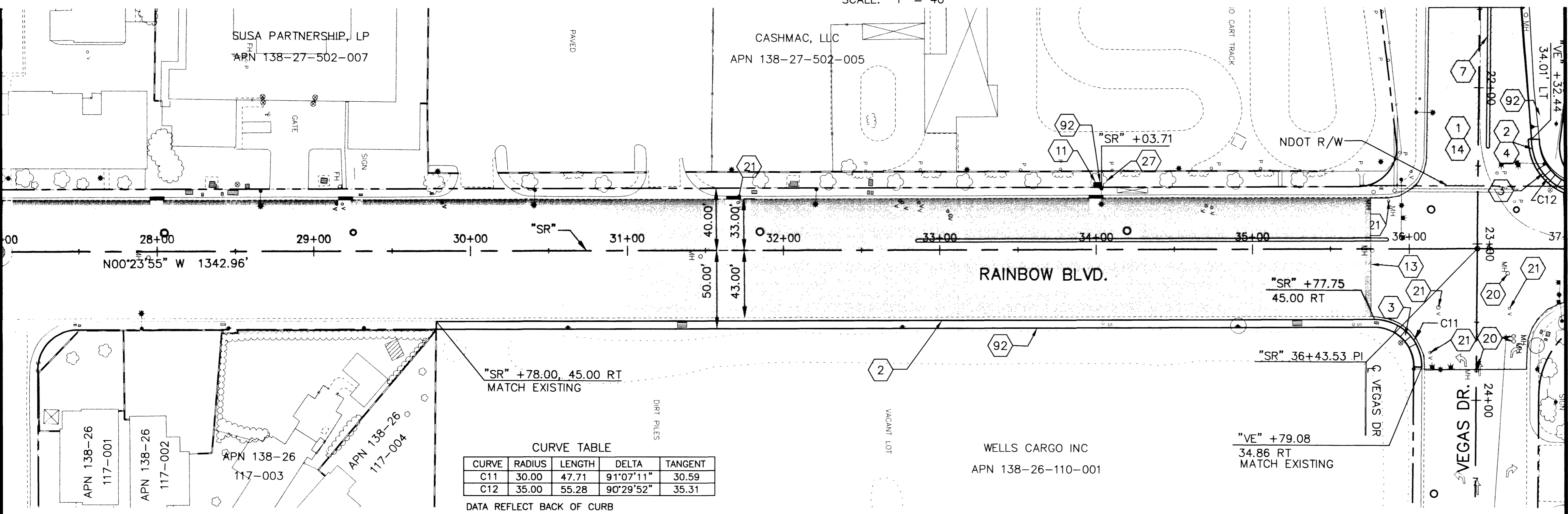
NAME: P:\W7X70800\700CAD\702CIVIL\702DWG\70800-r04.dwg DATE: FEB 27, 2002 TIME: 3:09 PM

SCALE: 1" = 40'



MATCH LINE "SR" 27+00 SEE SHEET S-3

MATCH LINE "SR" 37+00 SEE SHEET S-5



- NOTES:**
- CONSTRUCT ASPHALT PAVEMENT WITH TYPE II AGGREGATE BASE (REFER TO TYPICAL SECTIONS FOR PAVEMENT DESIGN)
 - CONSTRUCT CONCRETE SIDEWALK (USD. DWG. NO. 234)
 - CONSTRUCT SIDEWALK RAMP, CASE 1 (USD. DWG. NO. 235)
 - CONSTRUCT "L" TYPE CURB & GUTTER (USD. DWG. NO. 216)
 - CONSTRUCT TACK-ON ISLAND (USD. DWG. NO. 221)
 - CONSTRUCT BUS STOP LOADING PAD WITHIN EASEMENT (USD. DWG. NO. 234.2)
 - SAWCUT
 - REMOVE ASPHALT PAVEMENT
 - ADJUST MANHOLE TO GRADE (USD. DWG. NO. 408)
 - ADJUST WATER VALVE BOX TO FINISHED GRADE PER UDACS PLATE NO. 8 (VALVE SHALL BE ACCESSIBLE AT ALL TIMES)
 - ADJUST UTILITY VAULT TO GRADE
 - REMOVE TREE
 - RESTORE LANDSCAPING AND IRRIGATION TO MATCH EXISTING (REPLACE IN KIND)
- BASIS OF BEARINGS**
 NORTH 0°05'50" WEST, BEING THE BEARING OF THE WEST LINE OF THE SOUTHWEST QUARTER (SW 1/4) OF THE SOUTHWEST QUARTER (SW 1/4) OF SECTION 23, T. 20 S., R. 60 E., M.D.M., CLARK COUNTY, NEVADA, AS SHOWN ON FILE 80 OF PARCEL MAPS, AT PAGE 46.
- BENCHMARK**
 CITY OF LAS VEGAS BENCHMARK: 1LV00 26W4 RIVET AND PLATE IN TOP OF CURB, NORTHEAST RETURN OF RAINBOW BLVD AND WASHINGTON AVE. ELEV. = 724.7549 METERS (PUBLISHED NAVD'88) ELEV. = 2377.80 U.S. SURVEY FEET (CALCULATED NAVD'88)
 CITY OF LAS VEGAS BENCHMARK: 0LV00 14SWS RIVET AND PLATE IN TOP OF CURB, NORTHEAST RETURN OF SMOKE RANCH RD AND LORENZI BLVD. ELEV. = 708.7363 METERS (PUBLISHED NAVD'88) ELEV. = 2325.25 U.S. SURVEY FEET (CALCULATED NAVD'88)

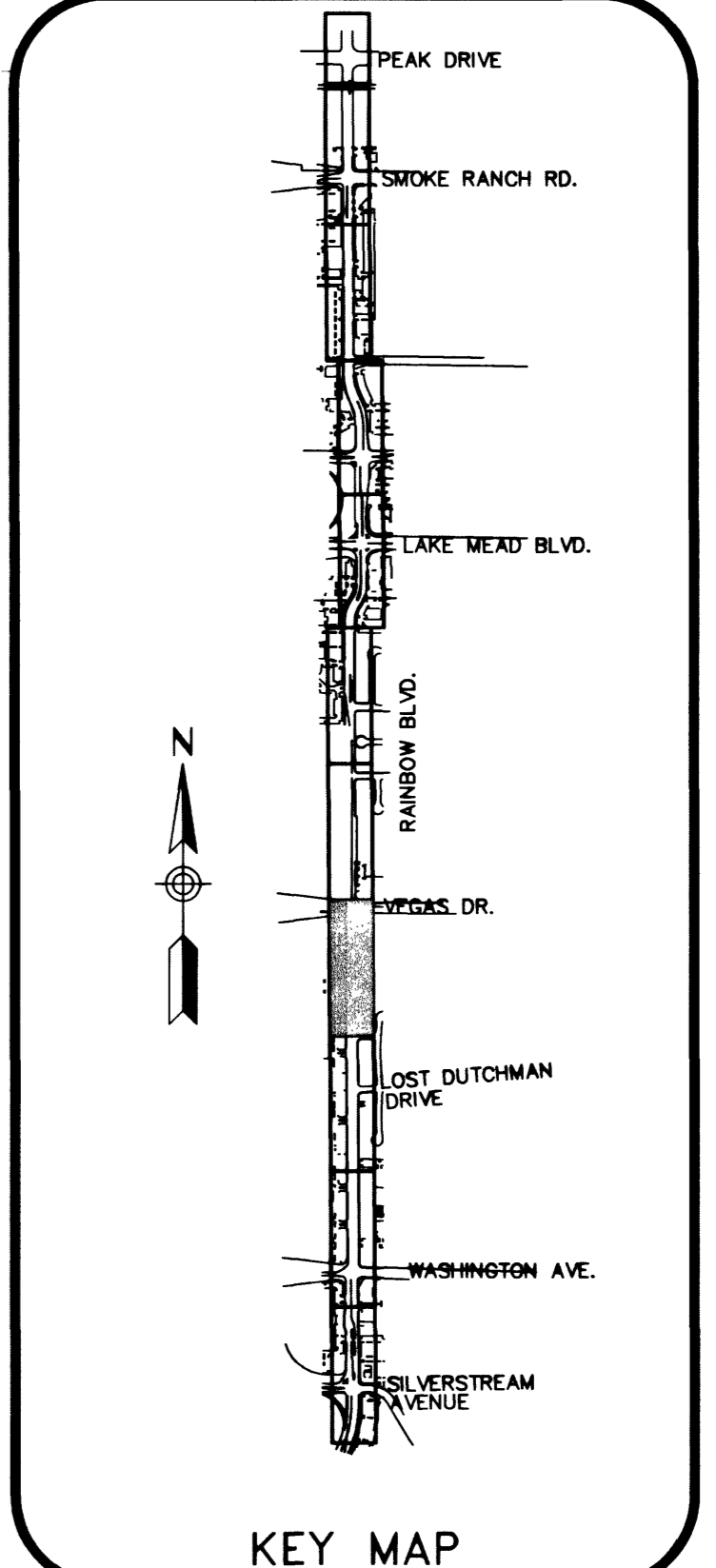
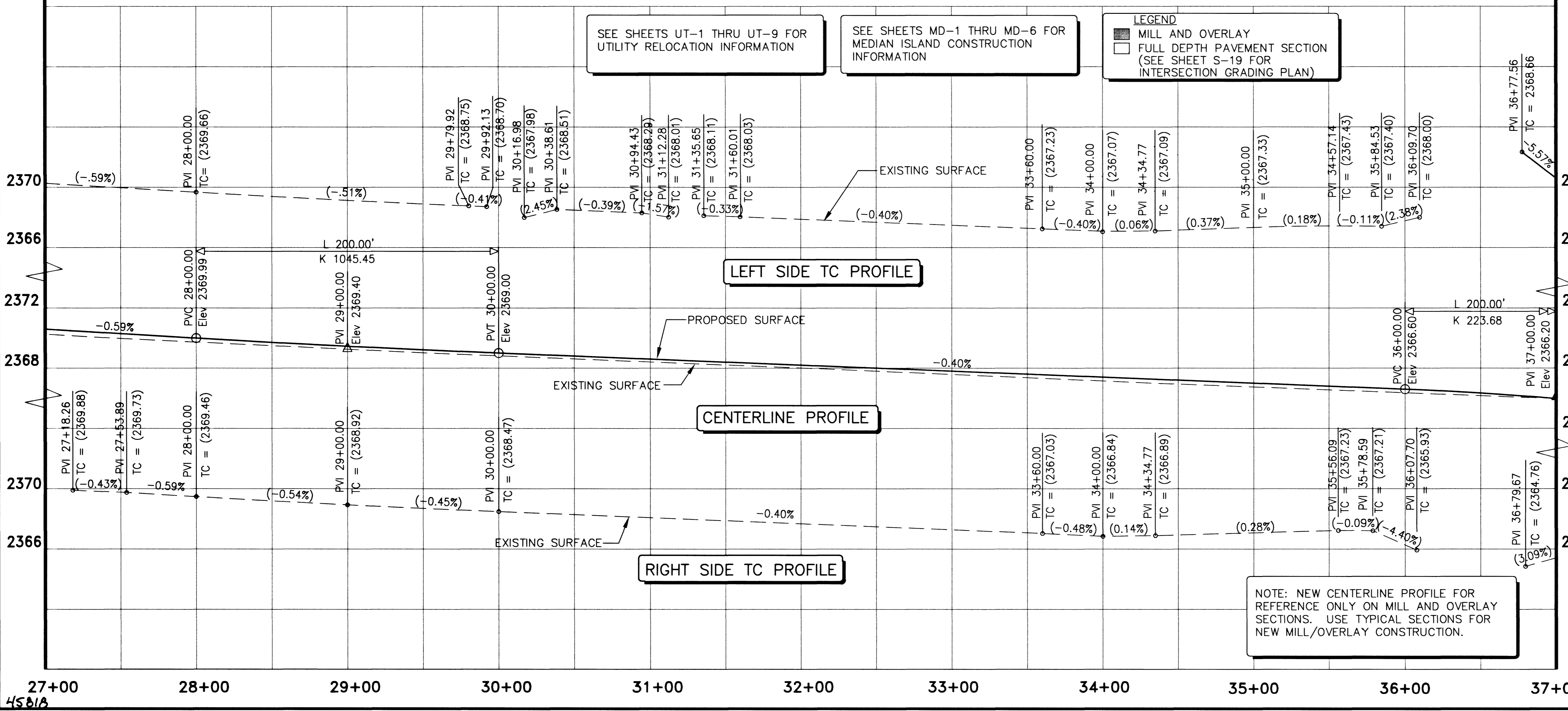
DATA REFLECT BACK OF CURB

CURVE	RADIUS	LENGTH	DELTA	TANGENT
C11	30.00	47.71	91°07'11"	30.59
C12	35.00	55.28	90°29'52"	35.31

SEE SHEETS UT-1 THRU UT-9 FOR UTILITY RELOCATION INFORMATION

SEE SHEETS MD-1 THRU MD-6 FOR MEDIAN ISLAND CONSTRUCTION INFORMATION

LEGEND
 ■ MILL AND OVERLAY
 □ FULL DEPTH PAVEMENT SECTION (SEE SHEET S-19 FOR INTERSECTION GRADING PLAN)



NOTE: NEW CENTERLINE PROFILE FOR REFERENCE ONLY ON MILL AND OVERLAY SECTIONS. USE TYPICAL SECTIONS FOR NEW MILL/OVERLAY CONSTRUCTION.

Las Vegas Valley Water District Date: 8/16/02

Call before you Dig.
 1-800-227-2600
 CLARK COUNTY TRAFFIC MANAGEMENT OPERATIONS UNIT (702) 455-7544



DESIGN: DEP
 DATE: 2/14/2002
 SCALE: 1:40
 CADFILE: [redacted]

PROJ NO: W7X70800
 DESIGN: DEP
 DATE: 2/14/2002
 SCALE: 1:40
 CADFILE: [redacted]

STAMP DATE: 7/22/02

4360 W. SHARPA AVE. SUITE 150
 LAS VEGAS, NV 89102-2130
 PHONE: (702) 870-1730
 FAX: (702) 870-1731

Sverdrup
 CIVIL, INC.

RAINBOW BOULEVARD
 SILVERSTREAM AVE. TO SMOKE RANCH ROAD
 ROADWAY PLAN & PROFILE
 "SR" 27+00 TO "SR" 37+00

SHEET
S-4
 27 OF 110 SHEETS
 DRAWING NO.
 107-V3519