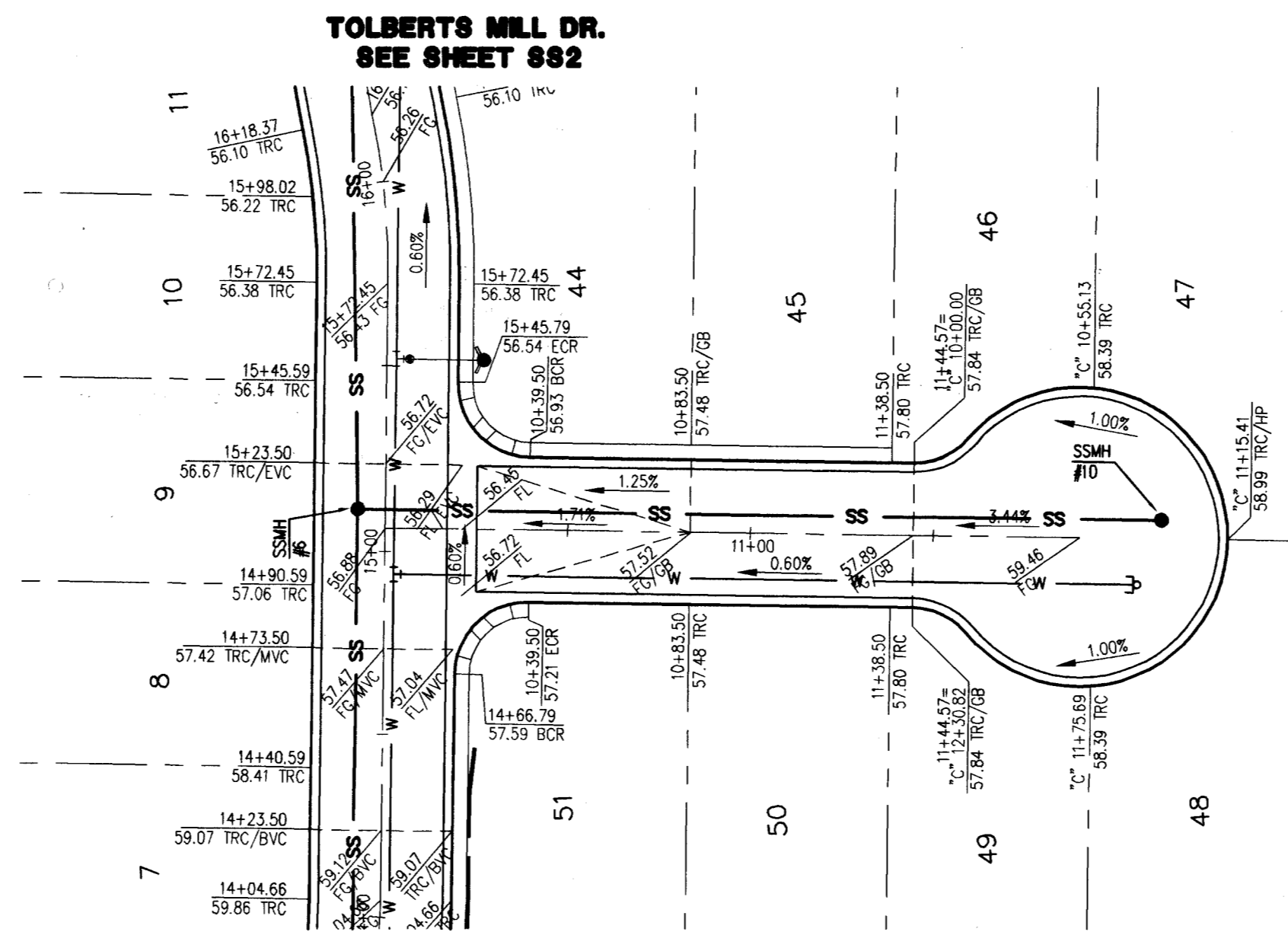
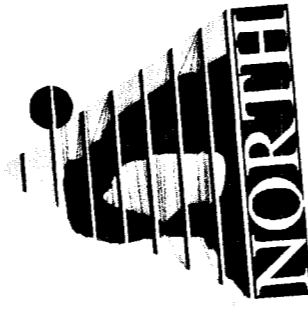
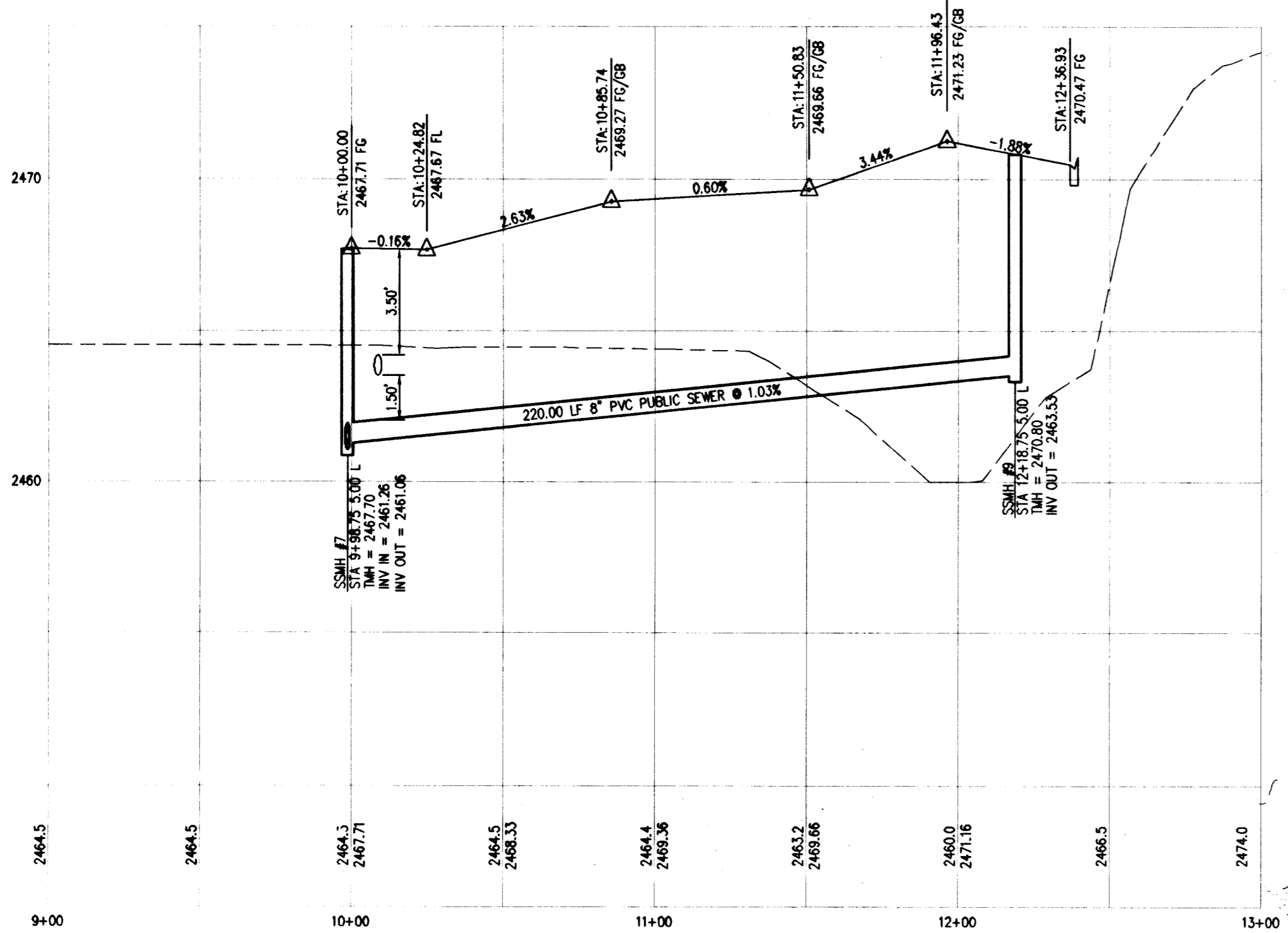
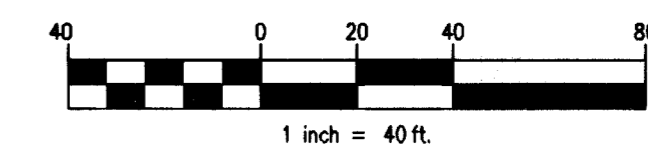
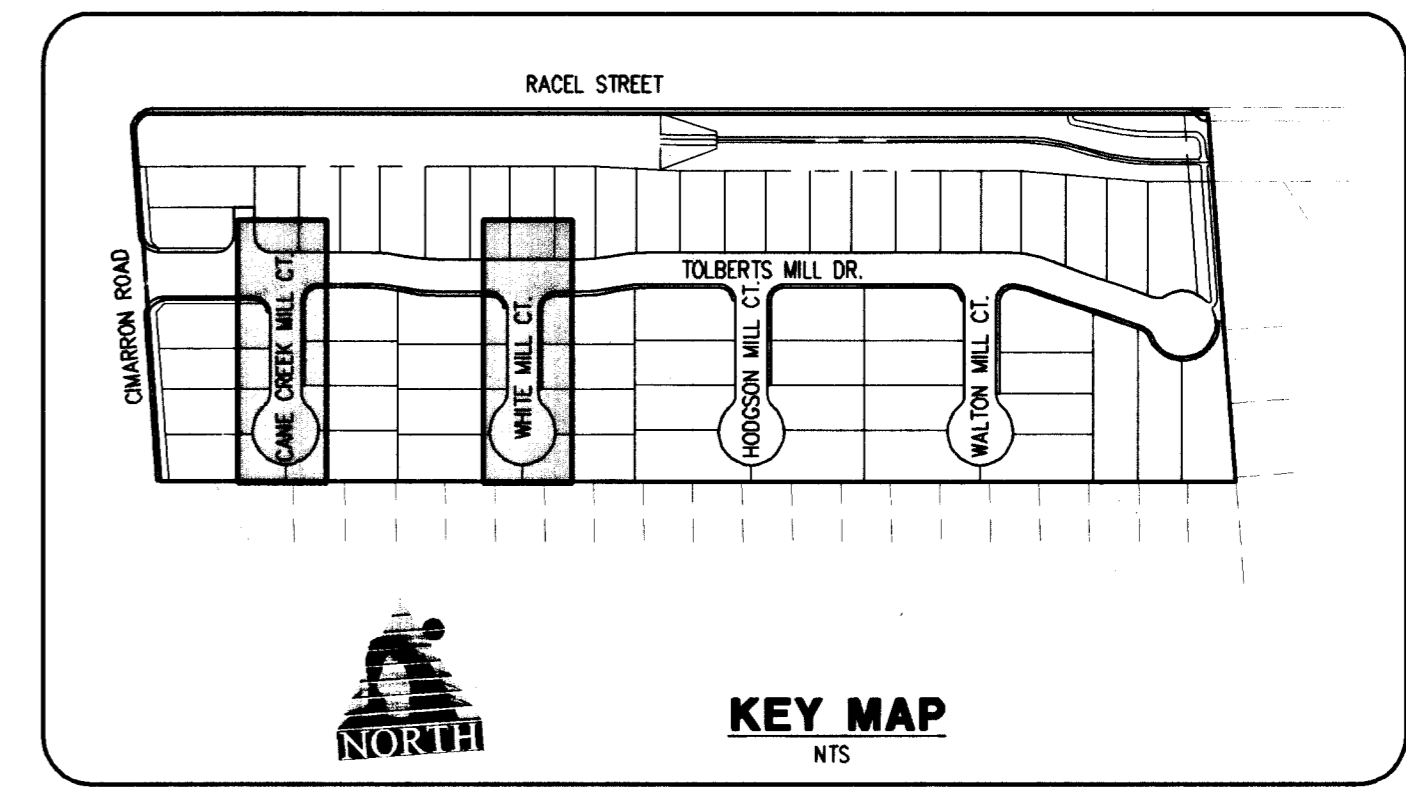


CANE CREEK MILL CT.
(PRIVATE)

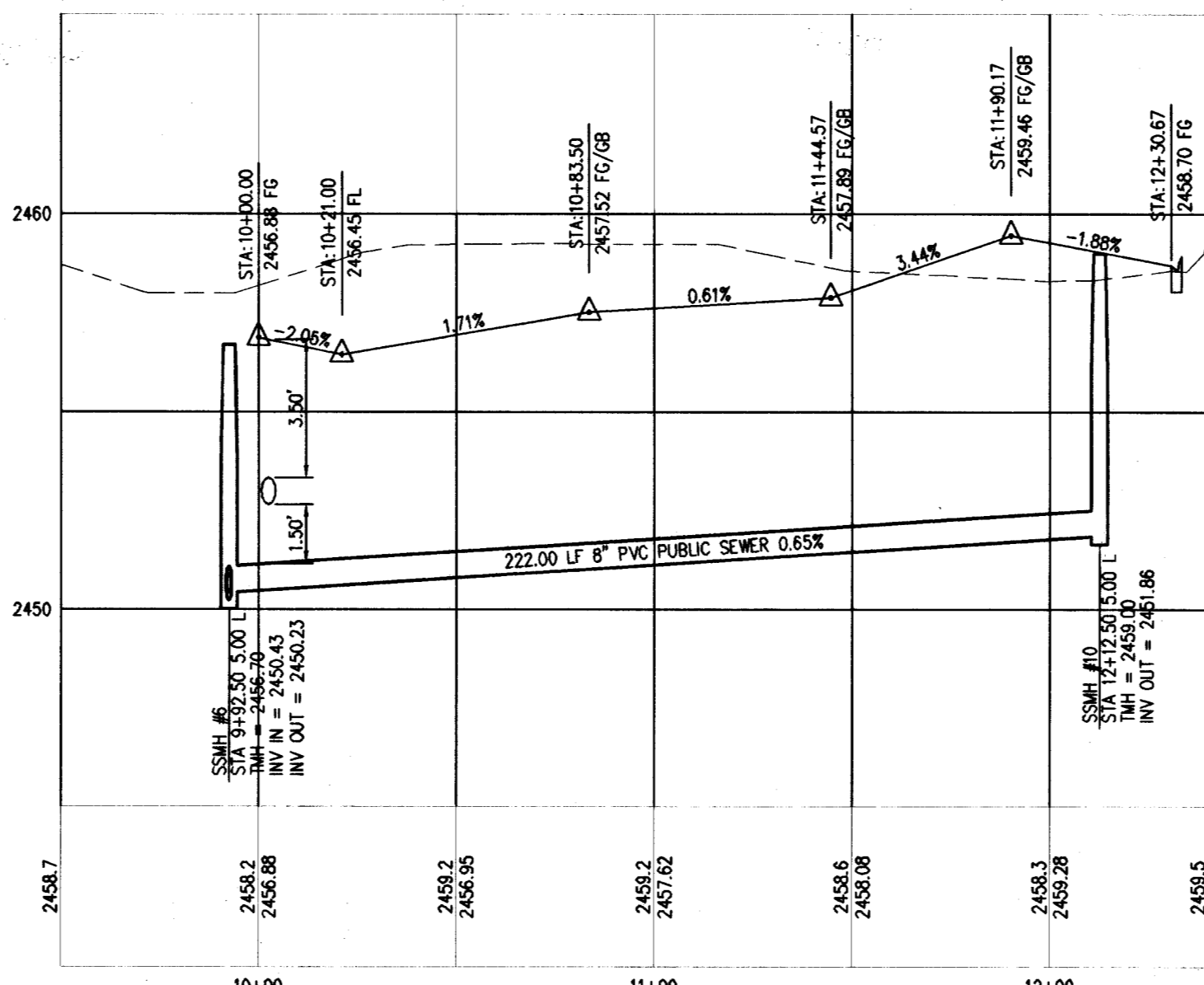


WHITE MILL CT.
(PRIVATE)



CANE CREEK MILL CT.

PROFILE
HORIZONTAL SCALE: 1"=40'
VERTICAL SCALE: 1"=4'



WHITE MILL CT.

PROFILE
HORIZONTAL SCALE: 1"=40'
VERTICAL SCALE: 1"=4'

FLOOD CONTROL QUANTITIES

1" DIAMETER PLACED DECORATIVE ROCK	1,029 SY
3 COURSE SOLID BROUT (ALONG LOTS 1-13, 31, 51, & 56-59)	1,243 LF
24" RCP STORM DRAIN	1,245 LF
6" CONCRETE "U" GUTTER	658 LF

EARTHWORK QUANTITIES

NET CUT	54,597 CY
NET FILL	114,439 CY
NET DIFFERENCE	-59,842 CY

SOILS REPORT

THE SOILS REPORT FOR THIS PROJECT IS REFERENCED AS GEOTECHNICAL EXPLORATION REPORT RESIDENTIAL DEVELOPMENT BY OWENS GEOTECHNICAL (PROJECT NO. E-03-112), DATED MAY 14, 2003.

BASIS OF BEARING:

NORTH 00°26'00" WEST
BEING THE EAST LINE OF THE SOUTHEAST QUARTER (SE ¼) OF THE SOUTHEAST QUARTER (SE ¼) OF SECTION 8, TOWNSHIP 19 SOUTH, RANGE 80 EAST, W.D.M., CLARK COUNTY, NEVADA, AS SHOWN IN FILE 83, PAGE 13 OF RECORD OF SURVEYS, CLARK COUNTY, OFFICIAL RECORDS.

BENCHMARK:

8190 15NWS
CITY OF LAS VEGAS RIVET AND PLATE FOUND IN A LAS VEGAS VALLEY WATER DISTRICT CONCRETE PAD AT THE SOUTHEAST CORNER OF BUFFALO DRIVE AND GRAND TETON DRIVE.
ELEVATION = 2416.12 FEET (736.4339 METERS)
NOTE: ALL ELEVATIONS ARE GIVEN IN FEET.

Call before you Dig.
1-800-227-2600
UNDERGROUND SERVICE AGENCY (USA)

Call before you OVERHEAD
1-702-455-7511
1-702-593-6111
POWER LINE SERVICE DIVISION

Call before you UnderGround

AVOID HITTING UNDERGROUND TRAFFIC SIGNAL SYSTEMS AND STREET LIGHT SYSTEM CONDUITS
IT'S COSTLY CALL BEFORE YOU DIG UNDERGROUND

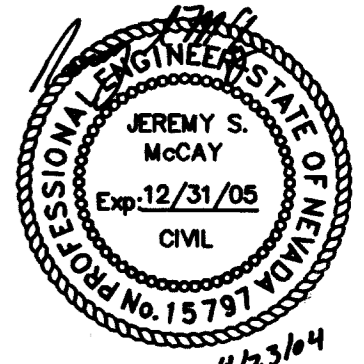
CLARK COUNTY TRAFFIC OPERATIONS
1-702-229-8811
LAS VEGAS AREA COMPUTERIZED TRAFFIC SYSTEM

KIMBALL HILL HOMES

RACEL/CIMARRON (TOLBERTS MILL)

SANITARY SEWER PLAN AND PROFILE
CANE CREEK MILL CT. AND
WHITE MILL CT.

DATE: 12/09/03	SCALE: 1"=40'
DESIGNED BY: JSM	PROJECT NO: CXC210901
CHECKED BY: JSM	



SHEET
SS4
20 of 25 SHEETS
DRAWING NO.
10744815

WRIGHT ENGINEERS

7425 PEAK DRIVE
LAS VEGAS, NEVADA 89128
TEL (702) 933-7000
FAX (702) 933-7001



STRUCTURAL CIVIL MEP SURVEYING

REV DATE BY

REVISION