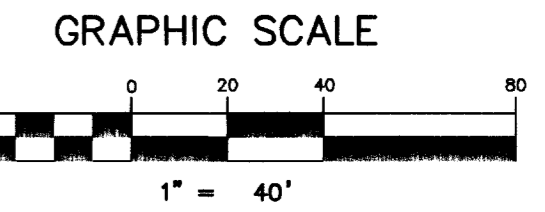
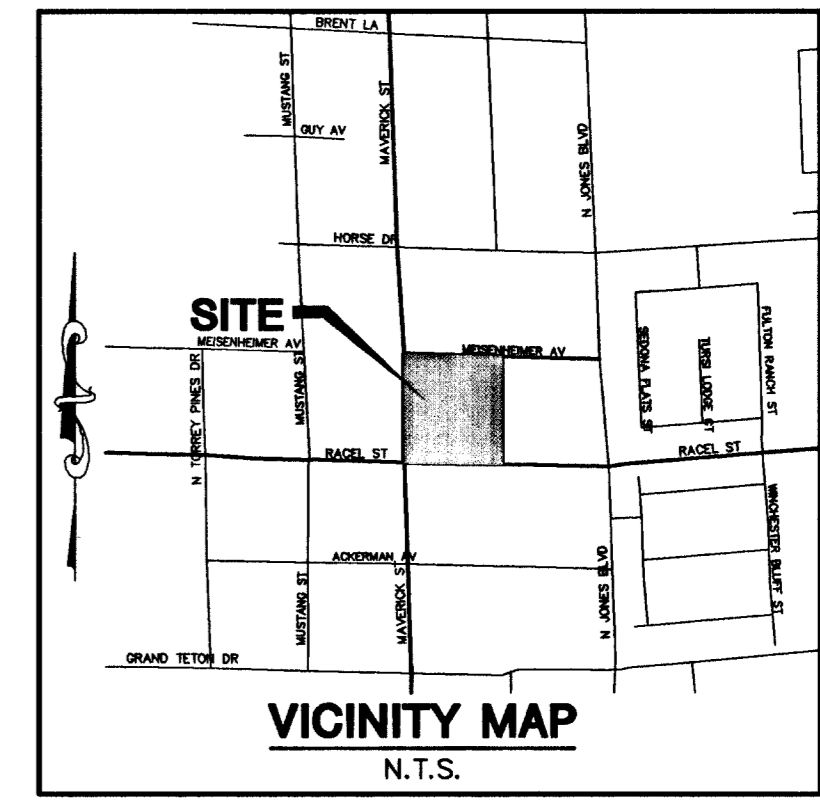
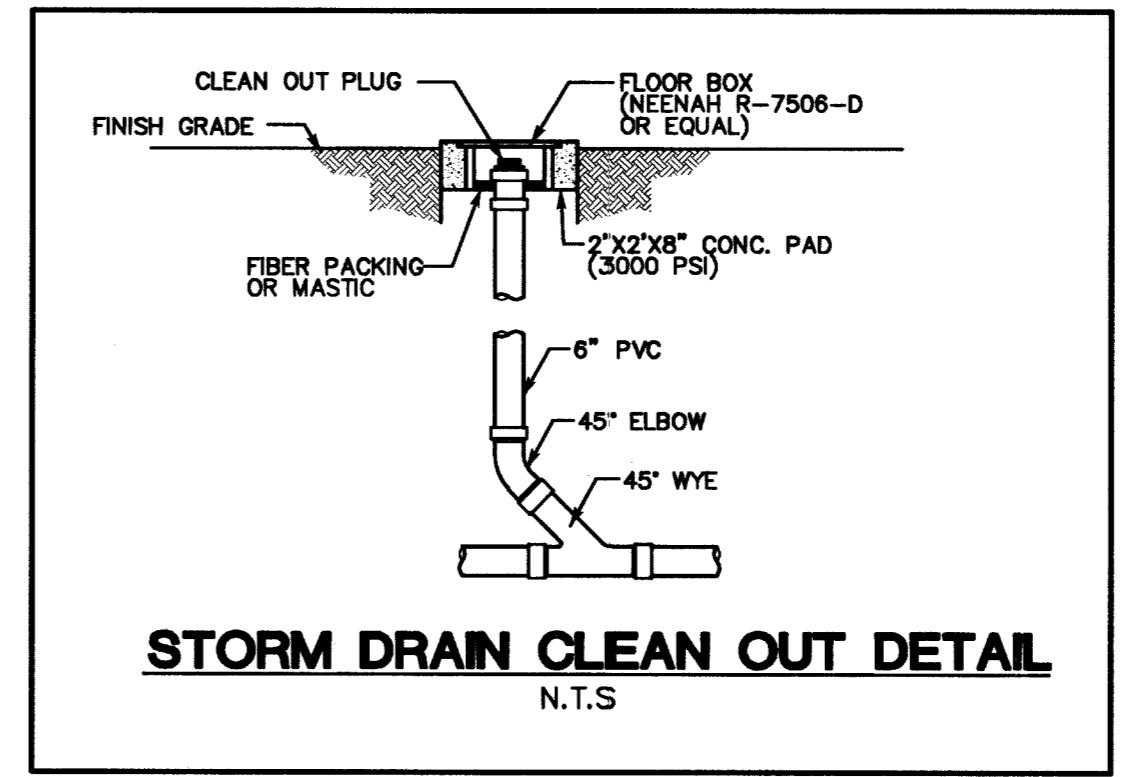
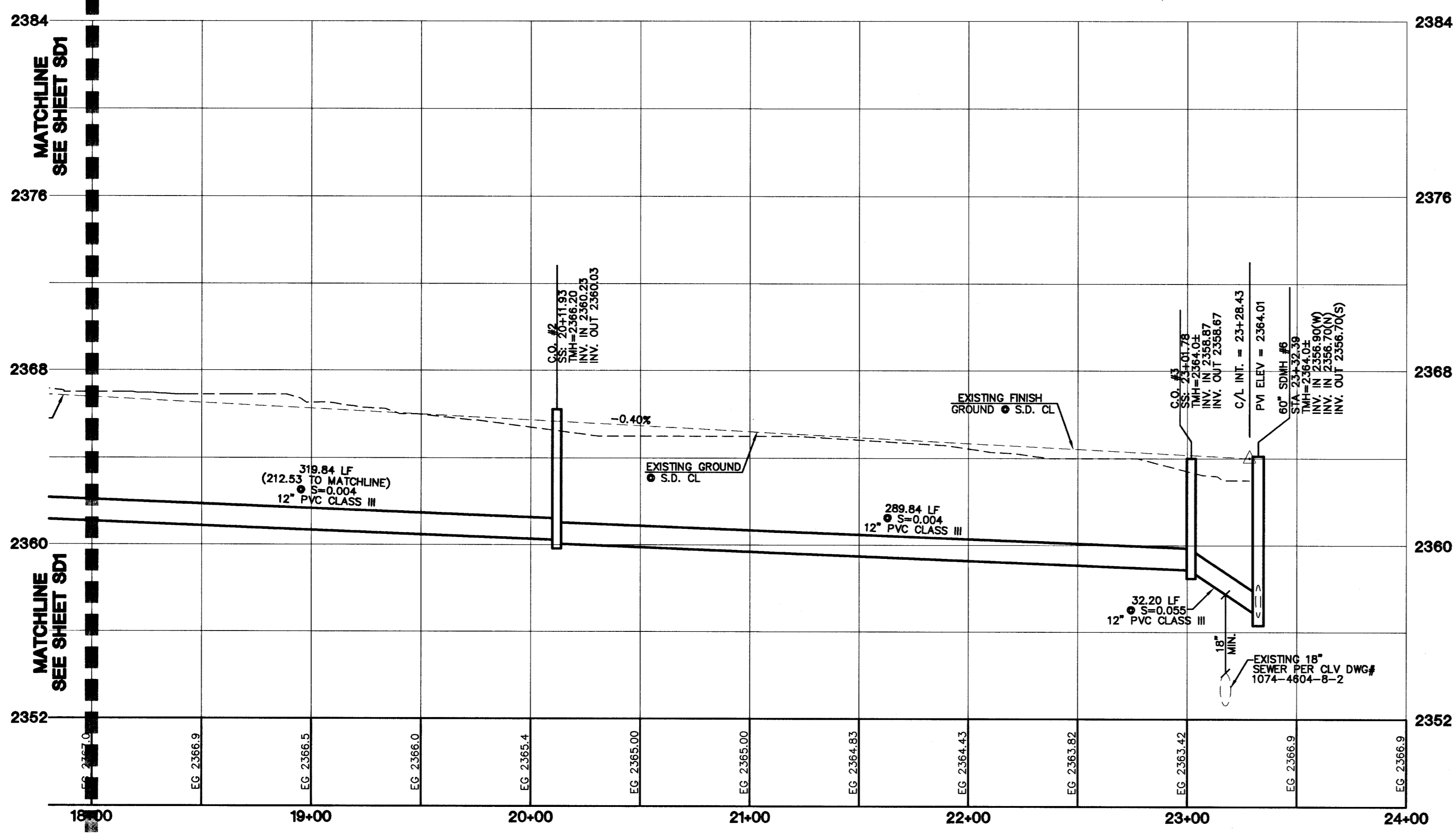


# RACEL STREET (PUBLIC)



**BENCHMARKS**  
PROJECT DATUM: NORTH AMERICAN VERTICAL DATUM OF 1988 (NAVD88)  
CLARK COUNTY BENCHMARK: 8LV90;14NNE6  
NAVD88 ELEVATION: 720.144 METERS (2362.67 FEET)  
CITY OF LAS VEGAS RIVET AND ROUND PLATE IN CONCRETE PAD, ±120' EAST OF MAVERICK ST. NEAR 6181 GRAND TETON DR.

**BASIS OF BEARINGS**  
THE BASIS OF BEARINGS FOR THIS PROJECT IS SOUTH 88°09'45" EAST, BEING THE NORTH LINE OF THE SOUTHWEST QUARTER (SW 1/4) OF SECTION 11, TOWNSHIP 19 SOUTH, RANGE 60 EAST, M.D.M., CLARK COUNTY, NEVADA, AS SHOWN ON A RECORD OF SURVEY ON FILE IN THE CLARK COUNTY, NEVADA, RECORDER'S OFFICE, IN FILE 73 AT PAGE 14.

**SETBACKS**  
PROPOSED MINIMUM STANDARDS FOR THE REAR PORTION OF THE DEVELOPMENT:  
FRONT = 30' BC & 20' ON CUL-DE-SAC  
SIDE = 10'  
CORNER = 15' BC  
REAR = 35'  
HEIGHT = 35'

**Call before you Dig**  
1-702-455-7511  
CLARK COUNTY TRAFFIC OPERATORS AND LAS VEGAS AREA COMPUTERIZED TRAFFIC SYSTEM

**Call before you Overhead**  
1-702-593-0111

**HC RAMP DATA**

NO.	A'	B'	CASE
1	B'	B'	1

"I CERTIFY THAT THIS GRADING PLAN IS IN CONFORMANCE WITH THE APPROVED DRAINAGE STUDY ON FILE AT CITY OF LAS VEGAS, NEVADA FOR THIS PROJECT."  
*Christopher R. Grubbs* 5/25/04  
CHRISTOPHER R. GRUBBS DATE  
P.E. NO. 13956

**CONTRACTOR NOTE**  
CONTRACTOR SHALL VERIFY HORIZONTAL AND VERTICAL LOCATION OF EXISTING UTILITIES AND NOTIFY THE DESIGN ENGINEER IMMEDIATELY OF ANY DISCREPANCIES PRIOR TO CONSTRUCTION.

- CONSTRUCTION NOTES**
- (A) CONSTRUCT 30" "ROLL" TYPE CURB & GUTTER PER STD. DWG. NO. 217A
  - (B) CONSTRUCT CONCRETE CROSS GUTTER PER STD. DWG. NO. 228
  - (C) CONSTRUCT 5' CONCRETE SIDEWALK PER STD. DWG. NO. 234
  - (D) CONSTRUCT 2' WIDE UNDER SIDEWALK DRAIN PER STD. DWG. NO. 236
  - (E) CONSTRUCT DEPRESSED CURB SECTION PER DETAIL ON SHEET DT1
  - (F) CONSTRUCT WHEEL CHAIR RAMP PER STD. DWG. NO. 235 CASE 1
  - (G) CONSTRUCT TYPE "A" CURB PER STD. DWG. NO. 219

**NOTE**  
ALL DRAINAGE EASEMENTS MUST BE COMMON LOTS & PUBLIC DRAINAGE EASEMENTS TO BE PRIVATELY MAINTAINED BY H.O.A.

**NOTE**  
ALL PRIVATE STREETS ARE P.U.E., PUBLIC SEWER EASEMENT & PUBLIC DRAINAGE EASEMENT TO BE PRIVATELY MAINTAINED BY H.O.A.

**NOTE**  
FOR GRADING NOTES, LEGEND, SECTIONS, AND TYPICAL LOT DETAIL SEE SHEET DT1.

<b>STERLING S. DEVELOPMENT</b>											
CITY OF LAS VEGAS, NEVADA											
2727 SOUTH RAINBOW BOULEVARD LAS VEGAS, NEVADA 89146-5148 PH. (702) 873-7550 FAX (702) 382-2597											
5385 S. CAMERON SUITE #200 LAS VEGAS, NEVADA 89119 (702) 871-0555											
<b>novada</b> CONSULTING ENGINEERS • PLANNERS • LAND SURVEYORS											
<b>STORM DRAIN PLAN AND PROFILE</b>											
<b>RACEL STREET</b>											
<b>QUARTERHORSE ESTATES UNIT 1</b>											
DRAWN BY:	DESIGNED BY:	CHECKED BY:	PROJECT NO.:	DATE:	SCALE:	SHEET:	REVISED:	DATE:	BY:	REVISION:	
EXPIRES 06-30-05											
SHEET <b>SD2</b>											
16 OF 17 SHEETS											
DRAWING NO. 10744821											