

GULL'S LANDING

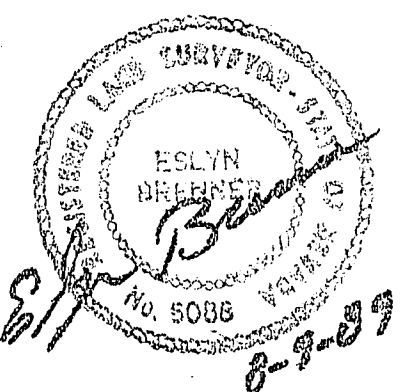
TIE MAP

FOUND ALUM. CAP
RLS 2050

SURVEYOR'S CERTIFICATE

I, ESYLN BRENNER, A REGISTERED LAND SURVEYOR,
DO HEREBY CERTIFY THAT THE MONUMENTS HAVE BEEN
SET AND THE TIES ESTABLISHED AS SHOWN HEREON.

Eslyn Brenner
ESLYN BRENNER
NEVADA CERTIFICATE No 5088
DATE 8-9-89

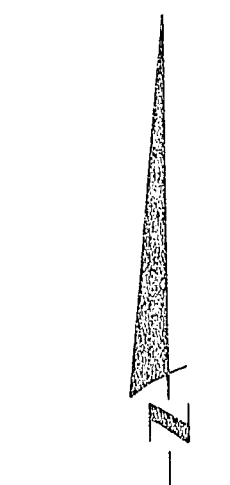


LEGEND

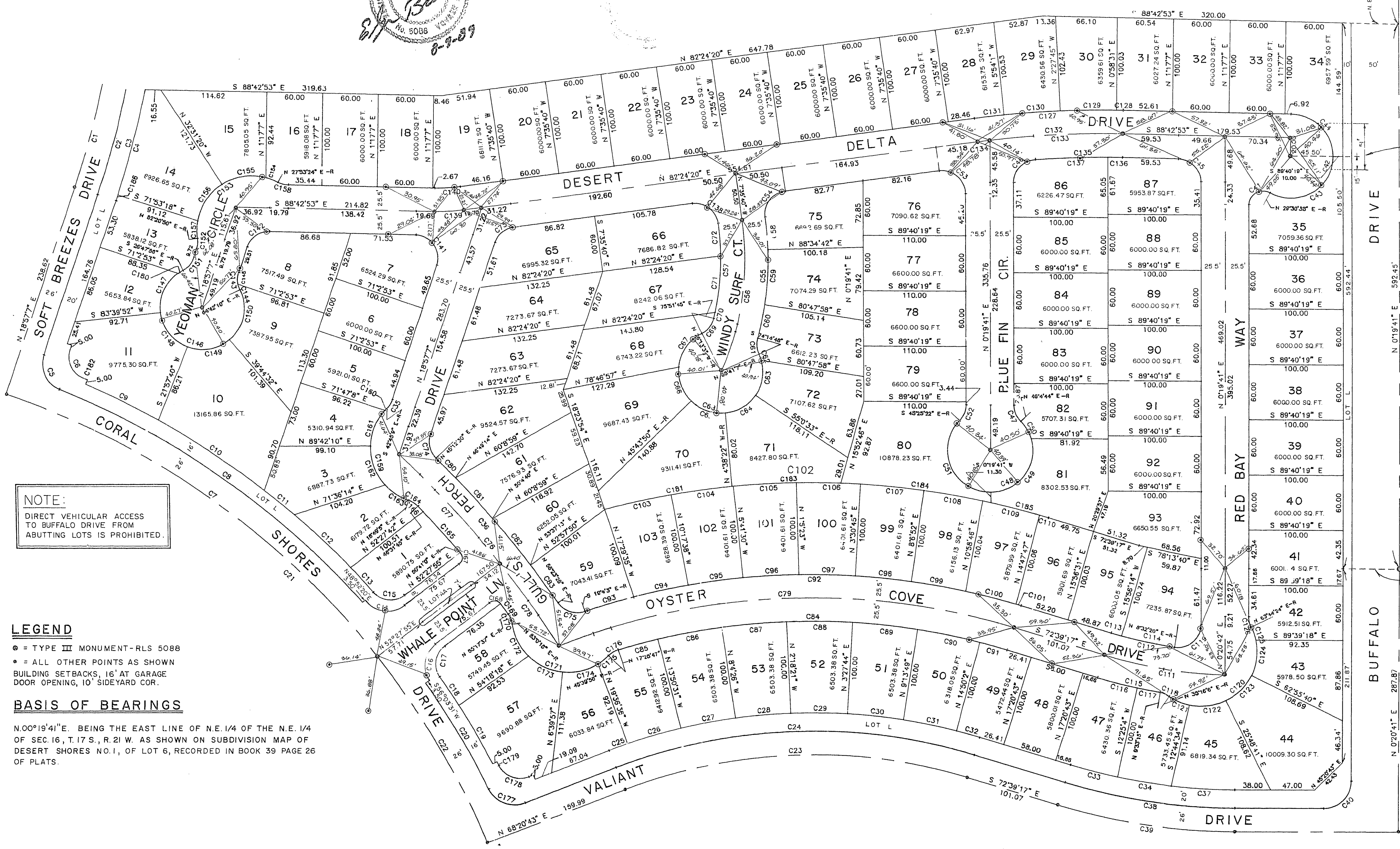
- ⊙ = BRASS CAP SET W/R.L.S. 5088 STAMPED ON TOP.
- ⊙ = 1 1/2" ALUM. CAP SET W/R.L.S. 5088 STAMPED ON TOP.

NOTE: TIE DIMENSIONS ARE NOT TO SCALE.

FOUND ALUM. CAP
RLS 2050



SCALE: 1" = 60'



NOTE:
DIRECT VEHICULAR ACCESS
TO BUFFALO DRIVE FROM
ABUTTING LOTS IS PROHIBITED.

LEGEND

- ⊙ = TYPE III MONUMENT-RLS 5088
- ⊙ = ALL OTHER POINTS AS SHOWN
- BUILDING SETBACKS, 16' AT GARAGE DOOR OPENING, 10' SIDEYARD COR.

BASIS OF BEARINGS

N00°19'41"E. BEING THE EAST LINE OF N.E. 1/4 OF THE N.E. 1/4 OF SEC. 16, T.17 S., R.21 W. AS SHOWN ON SUBDIVISION MAP OF DESERT SHORES NO.1, OF LOT 6, RECORDED IN BOOK 39 PAGE 26 OF PLATS.

FOUND ALUM. CAP
RLS 2050