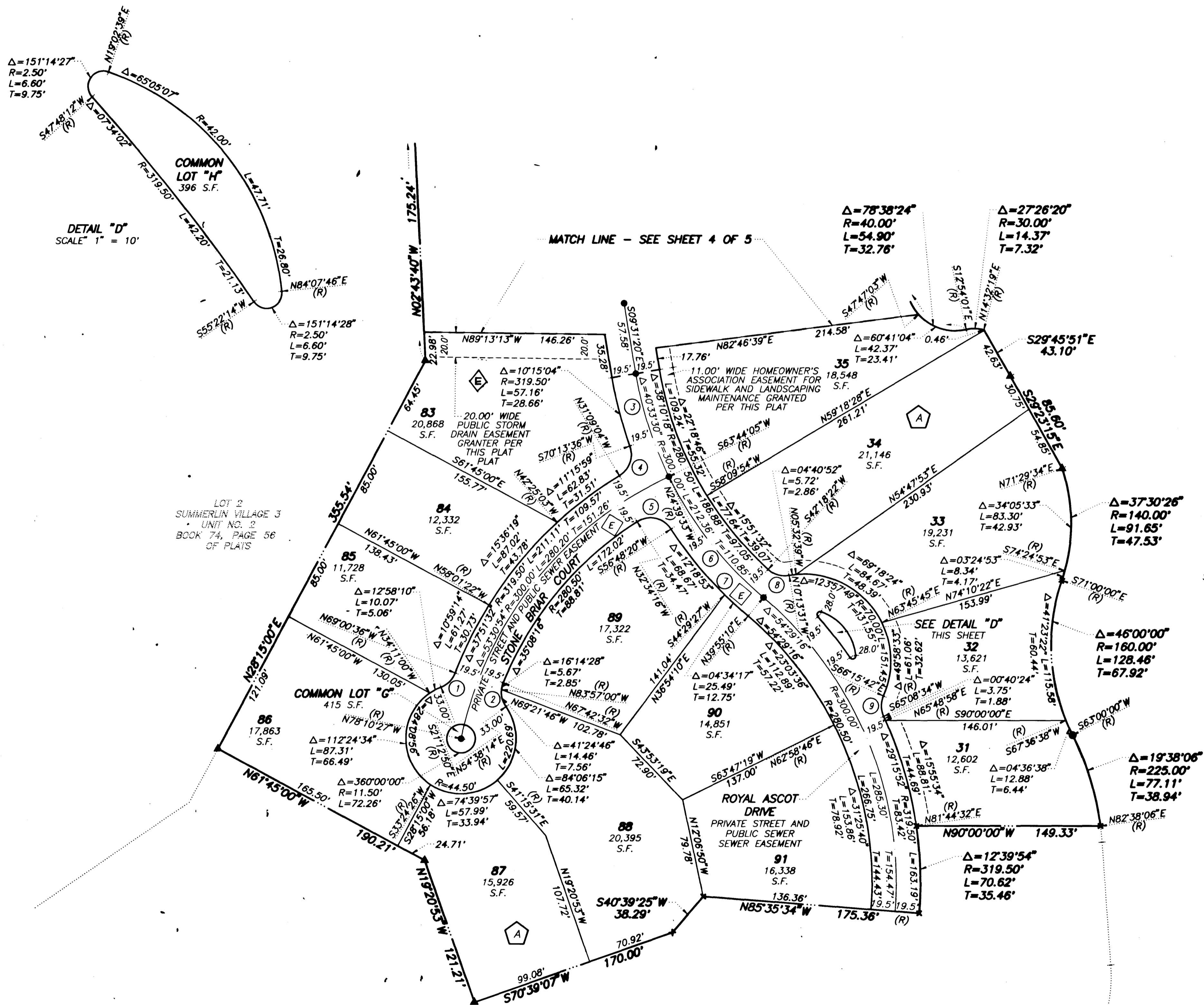


FINAL MAP OF PARCEL "O" - SUMMERLIN VILLAGE 3 - PHASE 1

A PLANNED COMMUNITY AND COMMON INTEREST COMMUNITY

BEING A SUBDIVISION OF A PORTION OF LOT 3 IN BLOCK A OF "SECOND AMENDED PLAT OF A PORTION OF SUMMERLIN VILLAGE 3 UNIT NO. 2" AS SHOWN BY MAP THEREOF ON FILE IN BOOK 79, PAGE 74 OF PLATS IN THE CLARK COUNTY RECORDER'S OFFICE, CLARK COUNTY, NEVADA, LYING WITHIN SECTIONS 25 AND 36, TOWNSHIP 20 SOUTH, RANGE 59 EAST, M.D.M., CITY OF LAS VEGAS, CLARK COUNTY, NEVADA



CURVE	DELTA	RADIUS	LENGTH	TANGENT
1	47°47'46"	20.00'	16.68'	8.86'
2	57°39'14"	20.00'	20.13'	11.01'
3	16°44'35"	300.00'	87.67'	44.15'
4	78°37'20"	20.00'	27.44'	16.38'
5	89°22'36"	20.00'	31.20'	19.78'
6	23°48'55"	300.00'	124.70'	63.26'
7	16°53'10"	319.50'	94.16'	47.43'
8	52°31'53"	20.00'	18.34'	9.87'
9	48°35'44"	20.00'	16.96'	9.03'

- LEGEND**
- SET 5/8" REBAR AND ALCAP STAMPED PLS 11174 W/ALUMINUM REFERENCE TIES IN TOP OF CURB
 - ▲ SET 5/8" REBAR AND ALCAP STAMPED PLS 11174
 - x CALCULATED POINT
 - 31 LOT NUMBER
TOTAL RESIDENTIAL = 61
TOTAL COMMON LOTS = 11
 - A BLOCK NUMBER
 - ① CURVE NUMBER
 - SUBDIVISION BOUNDARY LINE
 - STREET CENTERLINE
 - EASEMENT LINE
 - MATCH LINE
 - E PUBLIC DRAINAGE EASEMENT W/ PRIVATE SURFACE MAINTENANCE

NOTE
FOR SIDE PROPERTY LINES: SET CONCRETE NAIL AND BRASS TAG STAMPED PLS 11174 IN THE REAR WALL ALONG THE PROPERTY LINE PROJECTED. SET SAWCUT IN THE BACK OF CURB AT THE FRONT OF THE LOT ON THE PROPERTY LINE PROJECTED. SET REBAR AND ALCAP STAMPED PLS 11174 WHERE THERE IS NO BLOCK WALL

4055

FINAL MAP OF

PARCEL "O" - SUMMERLIN VILLAGE 3 - PHASE 1

A PLANNED COMMUNITY AND COMMON INTEREST COMMUNITY

BEING A SUBDIVISION OF A PORTION OF LOT 3 IN BLOCK A OF "SECOND AMENDED PLAN OF A PORTION OF SUMMERLIN VILLAGE 3 UNIT NO. 3" AS SHOWN BY MAP THEREOF ON FILE IN BOOK 78, PAGE 14 OF PLATS IN THE CLARK COUNTY RECORDERS' OFFICE, CLARK COUNTY, NEVADA, LYING WITHIN SECTIONS 35 AND 36, TOWNSHIP 30 SOUTH, RANGE 08 EAST, N.M.S., CITY OF LAS VEGAS, CLARK COUNTY, NEVADA.

