

910502

01108

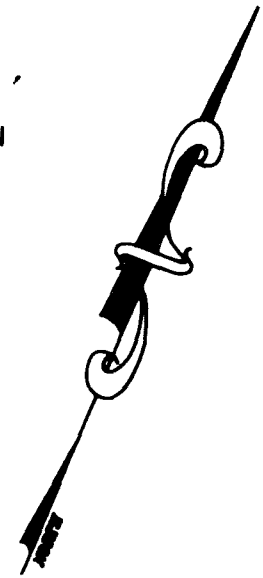
# OAK KNOLL

BEING LOT 7, BLOCK C OF THE ARBORS AT SUMMERLIN VILLAGE 11/12 UNIT NO. 2A (BOOK 75, PAGE 75)  
 LOCATED WITHIN THE SOUTHWEST QUARTER (SW 1/4) OF SECTION 25, AND THE NORTHWEST QUARTER  
 (NW 1/4) OF SECTION 36, TOWNSHIP 20 SOUTH, RANGE 59 EAST, M.D.M., CITY OF LAS VEGAS, CLARK COUNTY, NEVADA  
 (A COMMON INTEREST COMMUNITY)

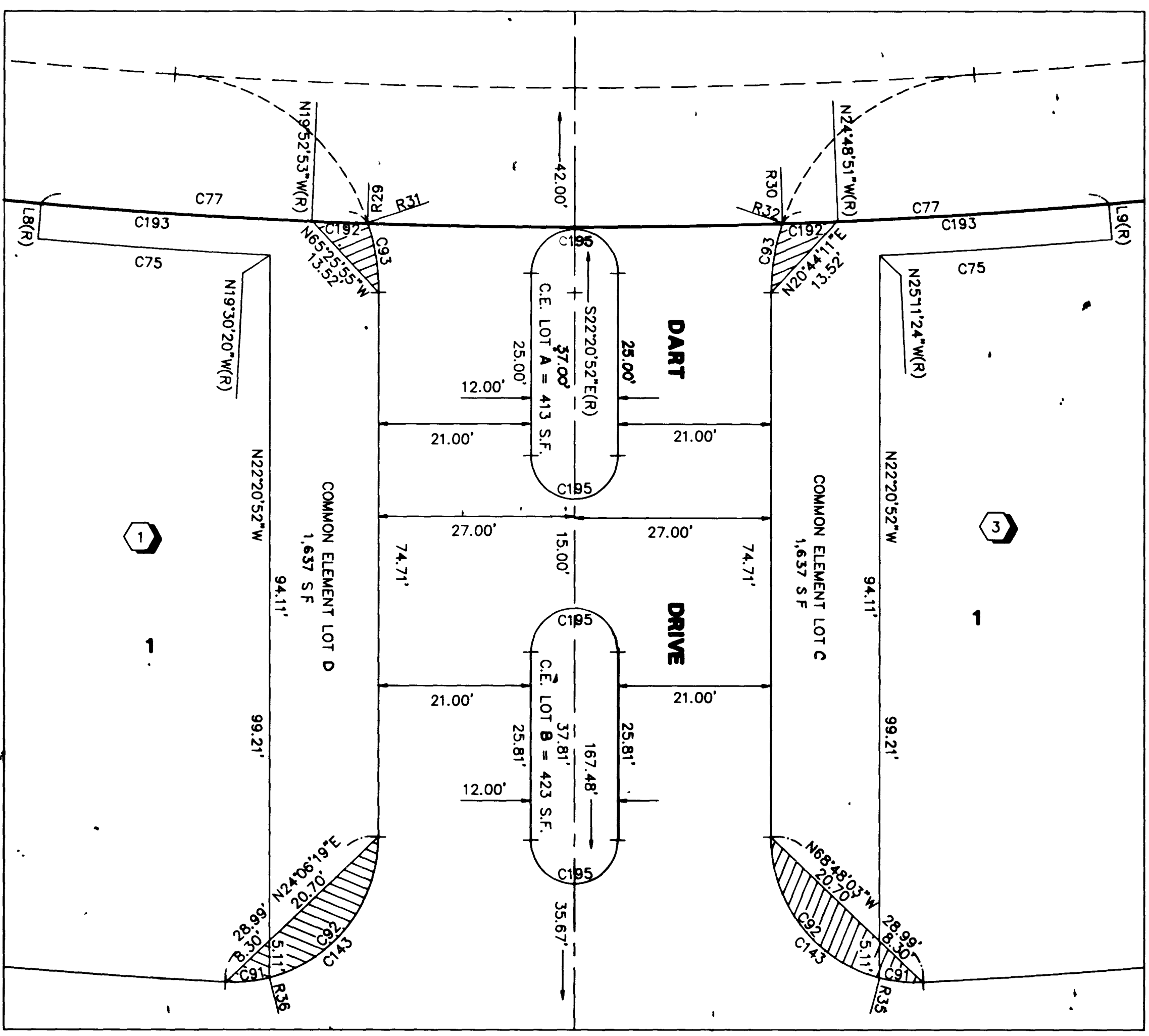
### LEGEND

- BOUNDARY LINE
- LOT LINE
- STREET CENTERLINE
- 17** LOT NUMBER / RESIDENTIAL = 147
- C.E. COMMON ELEMENT LOTS = 7
- TOTAL LOTS = 154
- C25 CURVE NUMBER
- L22 COURSE NUMBER
- R19 RADIAL LINE NUMBER
- (R) RADIAL
- (1) BLOCK NUMBER

"SIGHT VISIBILITY RESTRICTION EASEMENT" ARE EASEMENTS WHERE THE HEIGHT OF LANDSCAPING OR PHYSICAL IMPROVEMENTS WITHIN THE EASEMENT IS RESTRICTED TO A MAXIMUM OF 30 INCHES. (TO BE PRIVATELY MAINTAINED)



### DETAIL "A" NOT TO SCALE



### COURSE TABLE

LINE	DIRECTION	DISTANCE
L1	N60°36'00"E	12.00'
L2	N29°24'00"W	12.00'
L3	N51°31'38"W	2.00'
L4(R)	S02°22'00"E	18.00'
L5(R)	N13°54'02"W	17.30'
L6	S87°38'00"W	5.00'
L7	N02°22'00"W	10.00'
L8(R)	N17°20'27"W	5.00'
L9(R)	N27°21'17"W	5.00'
L10	N67°05'33"E	10.00'
L11	N22°54'27"W	5.00'
L12(R)	S39°49'02"E	27.35'

### RADIAL LINE TABLE

LINE	DIRECTION	TYPE
R1	S42°50'40"E	PRC
R2	N85°53'04"W	PRC
R3	S66°22'49"W	
R4	S34°21'16"W	PRC
R5	N04°20'26"E	PRC
R6	N07°21'11"W	
R7	S19°02'48"E	PRC
R8	S19°32'24"E	PCC
R9	S09°00'25"E	
R10	S03°33'45"E	
R11	N65°55'01"E	PRC
R12	N67°40'57"E	PRC
R13	S66°49'46"W	
R14	S11°48'46"W	PRC
R15	S66°46'49"E	PRC
R16	S22°41'51"W	PRC
R17	N71°56'24"E	
R18	S55°53'43"E	PRC
R19	N75°18'42"W	
R20	S28°03'12"E	
R21	N69°04'32"E	
R22	N70°09'19"E	
R23	S67°28'25"W	
R24	N65°56'59"E	
R25	N67°35'45"E	
R26	S69°13'33"W	
R27	N66°11'06"W	PRC
R28	S69°22'42"E	PCC
R29	N20°24'12"W	
R30	S24°17'32"E	
R31	S49°01'59"W	
R32	N86°16'17"E	
R33	N25°11'24"W	
R34	N19°30'20"W	
R35	N07°52'13"W	
R36	N36°49'31"W	
R37	N25°15'14"W	PCC
R38	N19°26'30"W	PCC
R39	S76°20'02"E	PRC
R40	N54°53'50"W	
R41	N60°43'06"E	
R42	N08°13'38"E	PRC
R43	S48°52'58"E	PRC
R44	S56°05'52"E	PCC
R45	N69°30'05"E	PRC
R46	S31°54'21"E	PRC
R47	N32°57'42"E	
R48	S45°02'36"W	
R49	N78°37'34"E	PRC
R50	N14°01'54"W	
R51	S57°01'10"W	
R52	N63°24'21"W	
R53	S49°47'17"E	PRC
R54	S46°51'15"E	PRC
R55	S24°41'06"E	PRC
R56	S59°48'32"W	PCC
R57	S61°34'20"W	PRC
R58	S20°15'32"E	
R59	N55°58'04"W	PRC
R60	N07°26'52"W	PRC
R61	N46°03'11"E	
R62	S14°10'45"W	
R63	N16°53'55"E	
R64	S01°37'43"W	
R65	S65°08'56"E	PRC
R66	N73°15'37"W	
R67	S67°28'42"E	
R68	S64°50'52"E	
R69	S70°23'22"E	
R70	N66°42'00"W	
R71	S65°23'28"E	
R72	S67°21'39"E	PRC
R73	N86°02'55"W	
R74	S88°05'45"W	
R75	S21°12'54"W	
R76	S45°38'10"W	PRC
R77	N61°34'14"W	
R78	S41°39'20"E	PRC
R79	S52°23'11"E	
R80	N64°20'37"W	
R81	N48°45'00"W	PCC
R82	S04°26'37"E	

### CURVE TABLE

CURVE	RADIUS	LENGTH	TANGENT	DELTA
C1	947.00'	65.93'	32.98'	03°59'20"
C2	984.00'	58.70'	29.36'	03°25'04"
C3	947.00'	20.37'	10.19'	01°13'58"
C4	984.00'	16.39'	8.19'	00°57'15"
C5	366.00'	42.42'	21.23'	06°38'25"
C6	366.00'	67.28'	33.74'	10°31'59"
C7	30.00'	52.29'	35.66'	99°51'36"
C8	403.00'	8.41'	4.21'	01°11'45"
C9	403.00'	57.12'	28.61'	08°07'17"
C10	403.00'	51.79'	25.93'	07°21'46"
C11	50.00'	10.20'	5.12'	11°41'37"
C12	50.00'	10.20'	5.12'	11°41'37"
C13	47.00'	51.39'	26.61'	62°39'12"
C14	47.00'	43.16'	23.23'	52°36'42"
C15	47.00'	28.48'	14.69'	34°43'16"
C16	50.00'	22.90'	11.66'	26°14'44"
C17	508.00'	18.41'	9.21'	02°04'36"
C18	508.00'	64.19'	32.14'	07°14'25"
C19	508.00'	78.02'	39.09'	08°47'57"
C20	508.00'	79.06'	39.61'	08°55'00"
C21	1646.00'	14.66'	7.33'	00°30'37"
C22	1646.00'	59.21'	29.61'	02°03'40"
C23	1646.00'	78.87'	39.44'	02°44'44"
C24	1646.00'	50.72'	25.36'	01°45'56"
C25	20.00'	34.03'	22.80'	97°29'03"
C26	30.00'	44.13'	27.15'	84°16'53"
C27	50.00'	22.90'	11.66'	26°14'44"
C28	47.00'	34.04'	17.81'	41°30'08"
C29	47.00'	44.50'	24.08'	54°15'00"
C30	47.00'	33.80'	17.67'	41°12'29"
C31	50.00'	23.58'	12.01'	27°01'23"
C32	1609.00'	20.00'	10.00'	00°42'44"
C33	1609.00'	64.47'	32.24'	02°17'44"
C34	1609.00'	63.35'	31.68'	02°15'21"
C35	20.00'	31.42'	20.00'	90°00'00"
C36	1609.00'	34.51'	17.25'	01°13'44"
C37	281.50'	32.29'	16.16'	06°34'18"
C38	281.50'	21.19'	10.60'	04°18'48"
C39	300.00'	56.99'	28.58'	10°53'06"
C40	318.50'	28.24'	14.13'	05°04'47"
C41	318.50'	32.27'	16.15'	05°48'19"
C42	19.50'	17.26'	9.24'	50°42'13"
C43	40.50'	48.64'	27.74'	68°49'05"
C44	40.50'	68.57'	45.78'	97°00'09"
C45	40.50'	81.70'	64.30'	115°35'11"
C46	40.50'	34.81'	18.56'	49°14'33"
C47	40.50'	66.56'	43.55'	94°09'34"
C48	40.50'	83.83'	68.19'	118°35'20"
C49	40.50'	13.72'	6.93'	19°24'59"
C50	842.00'	18.12'	9.06'	01°13'58"
C51	842.00'	58.62'	29.32'	03°59'20"
C52	1504.00'	85.20'	42.61'	03°14'45"
C53	1504.00'	70.40'	35.20'	02°40'54"
C54	1504.00'	40.00'	20.00'	01°31'26"
C55	1504.00'	48.95'	24.48'	01°51'54"
C56	1504.00'	59.22'	29.61'	02°15'22"
C57	1504.00'	32.25'	16.13'	01°13'43"
C58	965.50'	842.89'	450.42'	50°01'11"
C59	965.50'	336.70'	170.08'	19°58'52"
C60	947.00'	282.22'	142.16'	17°04'30"
C61	984.00'	307.28'	154.90'	17°53'32"
C62	366.00'	109.70'	55.27'	17°10'24"
C63	384.50'	172.38'	87.66'	25°41'12"
C64	403.00'	117.32'	59.08'	16°40'48"
C65	50.00'	20.41'	10.35'	23°23'14"
C66	47.00'	123.03'	175.32'	149°59'10"
C67	1609.00'	182.33'	91.26'	06°29'33"
C68	1627.50'	245.02'	122.74'	08°37'33"
C69	1646.00'	203.47'	101.87'	07°04'57"
C70	47.00'	112.35'	119.19'	136°57'36"
C71	281.50'	53.48'	26.82'	10°53'06"
C72	318.50'	60.51'	30.35'	10°53'06"
C73	40.50'	198.91'	33.14'	281°24'25"
C74	40.50'	198.92'	33.14'	281°24'26"
C75	847.00'	32.00'	16.00'	02°09'53"
C76	842.00'	26.08'	13.04'	01°46'29"
C77	842.00'	45.01'	22.51'	03°03'45"
C78	842.00'	58.62'	29.32'	03°59'20"
C79	842.00'	36.05'	18.03'	02°27'12"
C80	47.00'	22.87'	11.67'	27°53'07"
C81	47.00'	44.28'	23.94'	53°58'34"
C82	47.00'	33.66'	17.59'	41°01'43"
C83	47.00'	33.24'	17.35'	40°31'13"
C84	47.00'	41.63'	22.29'	50°45'14"
C85	47.00'	37.55'	19.84'	45°46'41"
C86	50.00'	18.71'	9.46'	21°26'12"
C87	50.00'	5.36'	2.68'	06°08'50"
C88	947.00'	60.57'	30.30'	03°39'54"
C89	947.00'	65.93'	32.98'	03°59'20"
C90	947.00'	64.05'	32.04'	03°52'32"
C91	20.00'	6.07'	3.06'	17°23'01"
C92	20.00'	26.36'	15.49'	75°31'21"
C93	30.00'	9.75'	4.92'	18°37'09"
C94	984.00'	60.01'	30.01'	03°29'39"
C95	984.00'	54.80'	27.40'	03°11'26"
C96	20.00'	28.56'	17.33'	81°49'52"
C97	318.50'	86.27'	43.40'	15°31'09"
C98	281.50'	85.97'	43.32'	17°29'50"

### CURVE TABLE (CONT.)

CURVE	RADIUS	LENGTH	TANGENT	DELTA
C99	281.50'	115.53'	58.59'	23°30'50"
C100	20.00'	33.34'	22.02'	95°30'22"
C101	984.00'	67.73'	33.88'	03°56'38"
C102	984.00'	58.70'	29.36'	03°25'04"
C103	984.00'	78.22'	39.13'	04°33'16"
C104	984.00'	50.59'	25.20'	02°56'02"
C105	20.00'	34.44'	23.28'	98°40'23"
C106	30.00'	44.12'	27.14'	84°15'39"
C107	20.00'	31.26'	19.85'	89°33'34"
C108	20.00'	31.62'	20.20'	90°34'14"
C109	318.50'	56.80'	28.47'	10°13'02"
C110	281.50'	65.25'	32.77'	13°16'50"
C111	20.00'	35.14'	24.11'	100°39'28"
C112	20.00'	26.58'	15.67'	76°08'56"
C113	281.50'	28.25'	14.14'	05°45'00"
C114	318.50'	49.71'	24.91'	08°56'36"
C115	50.00'	22.90'	11.66'	26°14'44"
C116	47.00'	31.15'	16.17'	37°58'05"
C117	47.00'	47.40'	25.93'	57°46'47"
C118	47.00'	41.56'	22.25'	50°40'10"
C119	50.00'	10.54'	5.29'	12°04'54"
C120	50.00'	12.36'	6.21'	14°09'50"
C121	40.50'	12.63'	6.37'	17°52'27"
C122	40.50'	50.22'	28.92'	71°03'04"
C123	40.50'	58.78'	35.93'	83°09'48"
C124	40.50'	77.27'	57.11'	109°19'07"
C125	30.00'	49.18'	32.13'	93°55'34"
C126	35.00'	43.00'	24.69'	70°23'56"
C127	30.00'	57.39'	42.53'	109°36'04"
C128	47.00'	17.74'	8.98'	21°37'37"
C129	965.50'	506.19'	259.05'	30°02'19"
C130	947.00'	388.35'	196.94'	23°29'46"
C131	984.00'	431.12'	219.08'	25°06'11"
C132	318.50'	106.51'	53.76'	19°09'38"
C133	300.00'	102.83'	51.82'	19°36'04"
C134	281.50'	93.50'	47.18'	19°01'50"
C135	47.00'	120.11'	155.76'	146°25'02"
C136	40.50'	198.92'	33.14'	281°24'26"
C137	281.50'	49.03'	24.58'	09°58'46"
C138	318.50'	55.47'	27.81'	09°58'46"
C139	47.00'	100.81'	86.37'	122°53'24"
C140	281.50'	201.49'	105.28'	41°00'40"
C141	300.00'	255.80'	136.26'	48°51'16"
C142	318.50'	237.78'	124.74'	42°46'28"
C143	20.00'	32.43'	21.04'	92°54'22"
C144	47.00'	112.42'	119.48'	137°03'08"
C145				

