

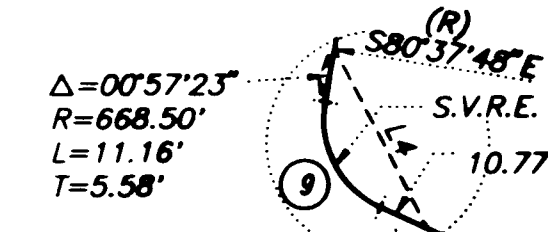
OAK HILLS AT SUMMERLIN - PHASE 1

FINAL MAP OF
A PLANNED DEVELOPMENT AND COMMON INTEREST COMMUNITY
 BEING A SUBDIVISION OF A PORTION OF LOT 11 IN BLOCK A OF
 "THE ARBORS AT SUMMERLIN VILLAGE 11/12 UNIT NO. 2B" AS SHOWN
 BY MAP THEREOF ON FILE IN BOOK 76, PAGE 92 OF PLATS IN THE
 CLARK COUNTY RECORDER'S OFFICE, CLARK COUNTY, NEVADA, LYING
 WITHIN SECTIONS 24 AND 25, TOWNSHIP 20 SOUTH, RANGE 59 EAST,
 M.D.M., CITY OF LAS VEGAS, CLARK COUNTY, NEVADA

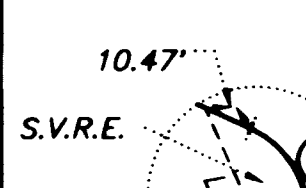
LEGEND

- SET 5/8" REBAR AND ALCAP STAMPED PLS 11174 W/ALUMINUM REFERENCE TIES IN TOP OF CURB
- ▲ SET 5/8" REBAR AND ALCAP STAMPED PLS 11174
- LOCATION OF MONUMENT TO BE SET PER BOOK 76, PAGE 92 OF PLATS
- 1 LOT NUMBER
TOTAL RESIDENTIAL LOTS = 97
TOTAL COMMON LOTS = 4
- ① CURVE NUMBER
- L1 LINE SEGMENT NUMBER
- SUBDIVISION BOUNDARY LINE
- STREET CENTERLINE
- 4.00' WIDE SIDEWALK EASEMENT
- EASEMENT LINE
- ⑤ BLOCK NUMBER
- S.F. SQUARE FEET
- S.V.R.E. SIGHT VISIBILITY RESTRICTION EASEMENT - NO VIEW OBSTRUCTION OVER 30' ABOVE TOP OF CURB WITHIN EASEMENT AREA

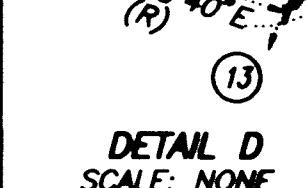
CURVE	DELTA	RADIUS	LENGTH	TANGENT	CURVE	DELTA	RADIUS	LENGTH	TANGENT
1	01°50'15"	811.00'	26.01'	13.01'	24	06°14'33"	281.50'	30.67'	15.33'
2	03°36'17"	811.00'	51.02'	25.52'	25	01°46'35"	505.50'	15.67'	7.84'
3	02°16'58"	816.00'	32.51'	16.26'	26	53°23'24"	19.50'	18.17'	9.81'
4	68°29'23"	30.00'	35.86'	20.42'	27	16°13'46"	300.00'	84.98'	42.77'
5	94°02'08"	30.00'	49.24'	32.19'	28	15°52'06"	505.50'	140.74'	70.37'
6	01°28'18"	811.00'	20.83'	10.42'	29	48°17'41"	19.50'	16.44'	8.74'
7	25°32'45"	30.00'	13.38'	6.80'	30	103°46'50"	20.00'	36.23'	25.50'
8	01°39'25"	650.00'	18.80'	9.40'	31	21°38'21"	318.50'	120.29'	60.87'
9	76°18'16"	20.00'	26.64'	15.71'	32	02°13'25"	542.50'	21.05'	10.53'
10	97°35'55"	20.00'	34.07'	22.85'	33	21°37'20"	40.50'	15.28'	7.73'
11	77°46'25"	20.00'	27.15'	16.13'	34	05°24'35"	300.00'	28.33'	14.17'
12	03°25'05"	798.00'	47.61'	23.81'	35	91°14'48"	20.00'	31.85'	20.44'
13	02°41'15"	798.00'	37.43'	18.72'	36	00°53'16"	818.50'	12.68'	6.34'
14	01°34'28"	835.00'	22.95'	11.47'	37	11°48'40"	818.50'	168.73'	84.66'
15	83°39'10"	20.00'	29.20'	17.90'	38	14°26'34"	800.00'	201.66'	101.37'
16	06°23'52"	300.00'	33.50'	16.77'	39	18°08'14"	800.00'	253.24'	127.69'
17	04°17'46"	281.50'	21.11'	10.56'	40	09°04'07"	781.50'	123.69'	61.98'
18	01°59'13"	835.00'	28.96'	14.48'	41	18°08'15"	781.50'	247.39'	124.74'
19	83°18'08"	20.00'	29.08'	17.79'	42	01°40'38"	781.50'	22.88'	11.44'
20	03°00'32"	835.00'	43.85'	21.93'	43	09°04'07"	818.50'	129.55'	64.91'
21	01°11'41"	281.50'	5.87'	2.94'	44	01°34'54"	818.50'	22.59'	11.30'
22	28°16'45"	40.50'	19.99'	10.20'	45	01°09'56"	818.50'	16.65'	8.33'
23	07°22'01"	281.50'	36.19'	18.12'	46	90°00'00"	20.00'	31.42'	20.00'



DETAIL C SCALE: NONE



DETAIL D SCALE: NONE



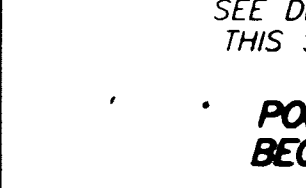
DETAIL E SCALE: NONE



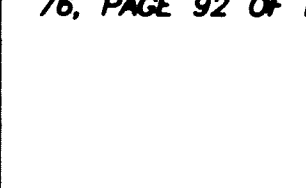
DETAIL F SCALE: NONE



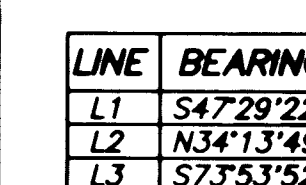
DETAIL G SCALE: NONE



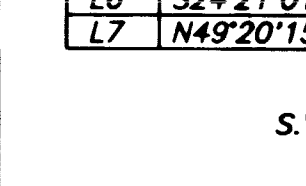
DETAIL H SCALE: NONE



DETAIL I SCALE: NONE



DETAIL J SCALE: NONE



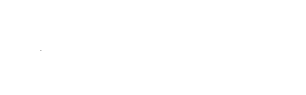
DETAIL K SCALE: NONE



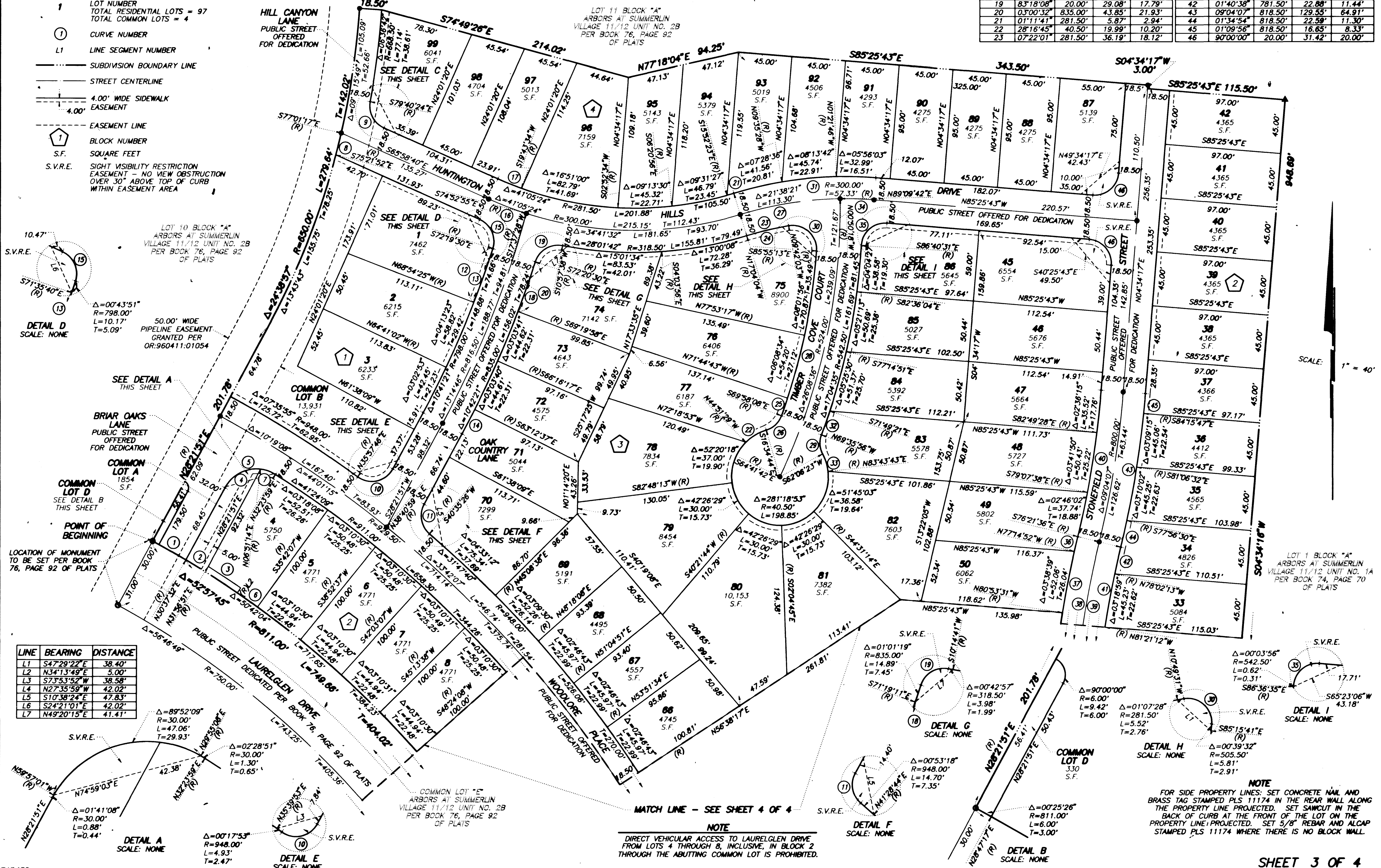
DETAIL L SCALE: NONE



DETAIL M SCALE: NONE



DETAIL N SCALE: NONE



LINE	BEARING	DISTANCE
L1	S47°29'22"E	38.40'
L2	N34°13'49"E	5.00'
L3	S73°53'52"W	38.58'
L4	N27°35'59"W	42.02'
L5	S10°38'24"E	47.83'
L6	S2°42'01"E	42.02'
L7	N49°20'15"E	41.41'

NOTE
 DIRECT VEHICULAR ACCESS TO LAUREL GLEN DRIVE FROM LOTS 4 THROUGH 8, INCLUSIVE, IN BLOCK 2 THROUGH THE ADJUTING COMMON LOT IS PROHIBITED.

NOTE
 FOR SIDE PROPERTY LINES: SET CONCRETE NAIL AND BRASS TAG STAMPED PLS 11174 IN THE REAR WALL ALONG THE PROPERTY LINE PROJECTED. SET SAWCUT IN THE BACK OF CURB AT THE FRONT OF THE LOT ON THE PROPERTY LINE PROJECTED. SET 5/8" REBAR AND ALCAP STAMPED PLS 11174 WHERE THERE IS NO BLOCK WALL.

